

## Rubber Endstop Buffers · cylindrical

25150.1472



### Product Description

To be used as an elastic end-stop, bearing foot etc.  
The hardness is  $55 \pm 5^\circ$  shore A. Further shore hardnesses ( $40 \pm 5^\circ$  shore A and  $70 \pm 5^\circ$  shore A) on request.

### Material

#### Support washer

- Stainless steel 1.4301

#### Body

- Rubber natural caoutchouc (NR), black

#### Screw

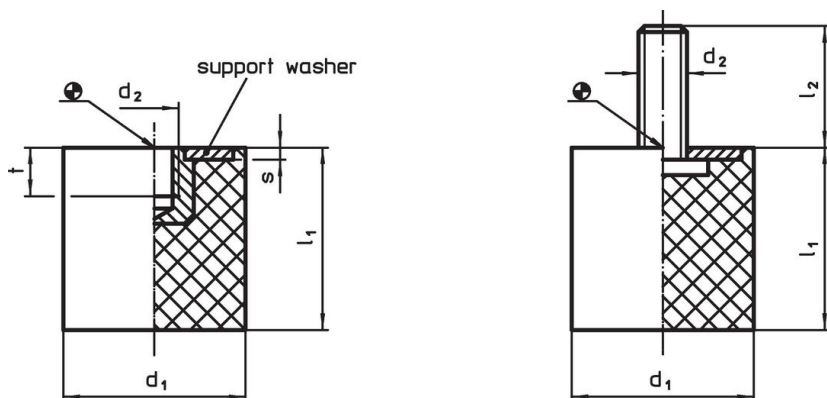
- Stainless steel 1.4301

### More information

#### Further products

- Support Legs, impact cushioning

### Drawing



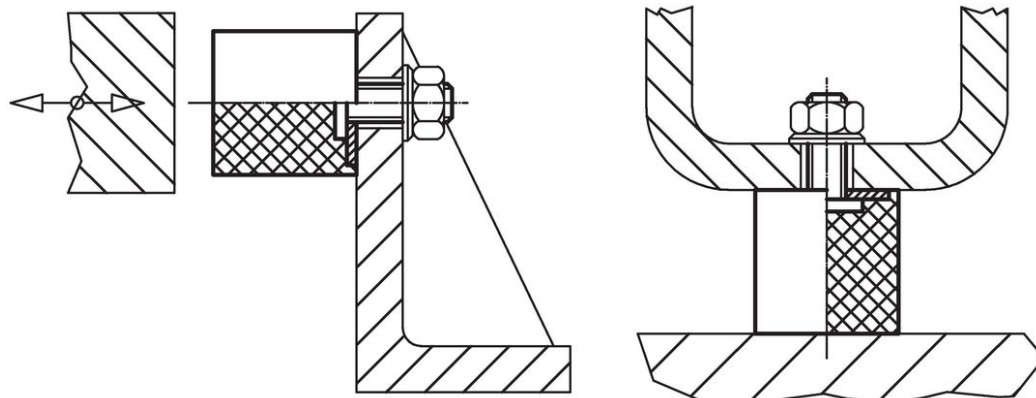
picture 1

picture 2

### Order information

Dimensions					Spring rate R ~ [N/mm]	Load capacity max. [N]	Spring range ~ [mm]	Spring range		[g]	Art. No.
d <sub>1</sub>	l <sub>1</sub>	d <sub>2</sub> [mm]	l <sub>2</sub>	s				min.	max.		
with screw – picture 2, Stainless steel											
70	55	M10	27	3	327	4500	13.75	-30	80	310	25150.1472

### Application example



## Compliance

### RoHS-compliant

Compliant with Directive 2011/65/EU [RoHS].

### Does not contain SVHC substances

No SVHC substances with more than 0.1% w/w contained - SVHC list [REACH] as of 25.06.2025.

### SCIP-code

N/A

### Does not contain Proposition 65 substances

No Proposition 65 substances included.

<https://www.P65Warnings.ca.gov/>

### Free from Conflict Minerals

This product does not contain any substances designated as "conflict minerals" such as tantalum, tin, gold or tungsten from the Democratic Republic of Congo or adjacent countries.

### POP-compliant

Contains no persistent organic pollutants – Stockholm Convention [POP] as of September 2025.

### PFAS-compliant

Contains no per- and polyfluoroalkyl substances (PFAS).

### TSCA-compliant

Agent concentration in this product does not exceed the specified threshold.