

# HID-Constant wattage BSX for SOX

BSX 36 H66 240V 50Hz CW-173/44

Constant-wattage (potted) electromagnetic copper/iron ballasts for use with an external ignitor for SOX and SOX-E lamps

## Product data

### • General Characteristics

Rated Number of Lamps	1 piece
Rated Ballast-Lamp Power	36
Rated Lamptype	SOX-E
Application code	H66
Line Voltage	230-240 V
Line Frequency	50 Hz
Design	CW-173/44

### • Operating Characteristics

Mains voltage safety (AC)	-10%/+10%
Mains voltage performance (AC)	-8%/+6%
Power losses gear	10.5 W

### • Wiring Characteristics

Connector type	Screw
Striplength	6.0 mm
Wcs Ballast contacts	0.75-2.50 mm <sup>2</sup>

### • Temperature Characteristics

T-storage	-25 (min), 80 (max) C
T-winding maximum (tw)	130 (max) C
Delta-T normal conditions	55 C

### • Approval & Application Chars

CE marking	Yes
ENEC certificate	Yes

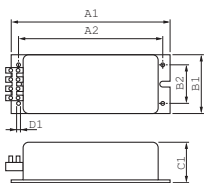
### • Product Dimensions

Length A1	173.0 mm
Fixing Hole Distance	157.0 mm
Length A2	
Width B1	64.0 mm
Fixing Hole Distance	42.0 mm
Width B2	
Height C1	44.0 mm
Fixing Hole Diameter D1	4.2 mm

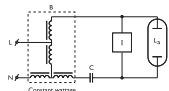
### • Product Data

Order code	913653920526
Full product code	913653920526
Full product name	BSX 36 H66 240V 50Hz CW-173/44
Order product name	BSX 36 H66 240V 50Hz CW-173/44
Pieces per pack	1
Packing configuration	12
Packs per outerbox	12
Bar code on pack - EAN1	8711500920034
Bar code on outerbox - EAN3	8711500938411
Logistic code(s) - 12NC	913653920526
Net weight per piece	1.700 kg

## Dimensional drawing



Product	A1 (Norm)	A2 (Norm)	B1 (Norm)	B2 (Norm)	C1 (Norm)	D1 (Norm)
BSX 36 H66 230-240V 50Hz CW-173/44	173.0	157.0	64.0	42.0	44.0	4.2



© 2011 Koninklijke Philips Electronics N.V.  
All rights reserved.

Specifications are subject to change without notice. Trademarks are the property of Koninklijke Philips Electronics N.V. or their respective owners.

[www.philips.com/lighting](http://www.philips.com/lighting)

2011, May 14  
data subject to change