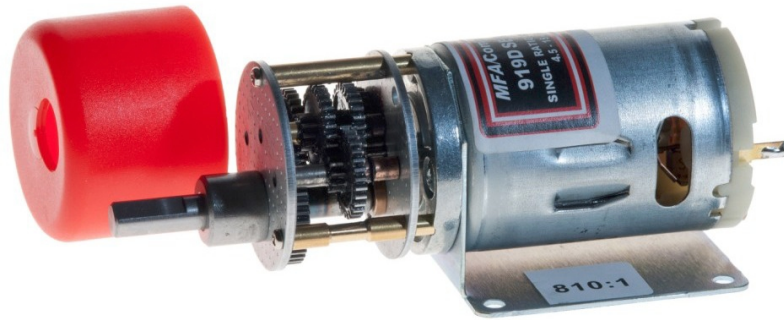


## 919D SERIES 35mm SINGLE RATIO METAL GEARBOX

### RE-540/1 MOTOR



Plastic Gearbox cover & metal bracket included with this series.

#### RATIOS NOW AVAILABLE AS EX-STOCK ITEMS.

919D2.51	(4.5v - 15v)	WITH RE 540/1 MOTOR.	RATIO 2.5:1
919D61	(4.5v - 15v)	WITH RE 540/1 MOTOR.	RATIO 6:1
919D111	(4.5v - 15v)	WITH RE 540/1 MOTOR.	RATIO 11:1
919D301	(4.5v - 15v)	WITH RE 540/1 MOTOR.	RATIO 30:1
919D501	(4.5v - 15v)	WITH RE 540/1 MOTOR.	RATIO 50:1
919D1001	(4.5v - 15v)	WITH RE 540/1 MOTOR.	RATIO 100:1
919D1481	(4.5v - 15v)	WITH RE 540/1 MOTOR.	RATIO 148:1
919D5001	(4.5v - 15v)	WITH RE 540/1 MOTOR.	RATIO 500:1
919D8101	(4.5v - 15v)	WITH RE 540/1 MOTOR.	RATIO 810:1
919D30001	(4.5v - 15v)	WITH RE 540/1 MOTOR.	RATIO 3000:1

Designed for heavy-duty industrial and model applications this robust unit boasts a powerful high quality, three pole motor with sintered bronze bearings. The metal gearbox incorporates sleeved bearings, enabling the high torque transfer from the motor to be transmitted through the gearbox. The unit is mounted on a 1mm thick plated steel bracket.

#### MOTOR DATA. (RE-540/1)

MODEL	VOLTAGE		NO LOAD		AT MAXIMUM EFFICIENCY						STALL TORQUE	
	OPERATING RANGE	NOMINAL	SPEED	CURRENT	SPEED	CURRENT	TORQUE		OUTPUT	EFF	TORQUE	
			R.P.M.	A	R.P.M.	A	oz-in	g-cm	W	%	oz-in	g-cm
RE-540/1	4.5 - 15	6v Constant	7500	0.45	6180	2.1	1.64	118.2	7.49	59.4	9.31	670
RE-540/1	4.5 - 15	12v Constant	14500	0.7	12048	2.81	2.22	160	19.8	62.71	14.29	1029

Stall Current RE-540/1 at 6v = 8.24A Stall Current RE-540/1 at 1.5v = 2.41AA

#### REDUCTION TABLE. R.P.M. (NO LOAD)

SUPPLY VOLTAGE	4.5v	6v	9v	12v	15v
919D2.51	2175	2900	4350	5800	7250
919D61	906	1209	1813	2417	3021
919D111	494	659	989	1318	1648
919D301	181	242	362	483	604
919D501	109	145	218	290	363
919D1001	54	73	109	143	181
919D1481	37	49	74	98	123
919D5001	11	15	22	29	36
919D8101	7	9	14	18	23
919D30001	1.8	2.4	3.6	4.8	6

WEIGHT	
919D2.51	240g
919D61	234g
919D111	238g
919D301	249g
919D501	255g
919D1001	255g
919D1481	255g
919D5001	260g
919D8101	255g
919D30001	262g

Note: Motor speeds may vary by (+) or (-) 12.5%

#### GEARED MOTOR TORQUE RATINGS AT MAX. EFFICIENCY.

	At 12v (g.cm)
2.5:1	309
6:1	741
11:1	1000
30:1	2000
50:1	3000
100:1	6000
148:1	6000
500:1	6000
810:1	6000
3000:1	6000

919D SERIES	
No Load Backlash	Max 2 deg.
Max Radial Load (10mm from flange)	1000gf.
Shaft Axial Load	700gf.

24 volt versions are available for this range of motor-gearboxes. Performance data is similar to 12 volt versions. This version also has an extended 10mm rear shaft to accommodate motor encoders. When ordering please use 12v version part number suffixed with 24V. I.E. 919D111 will be 919D11124V

NOTE: To establish Torque Rating in Nm, divide g.cm by 10,197.0

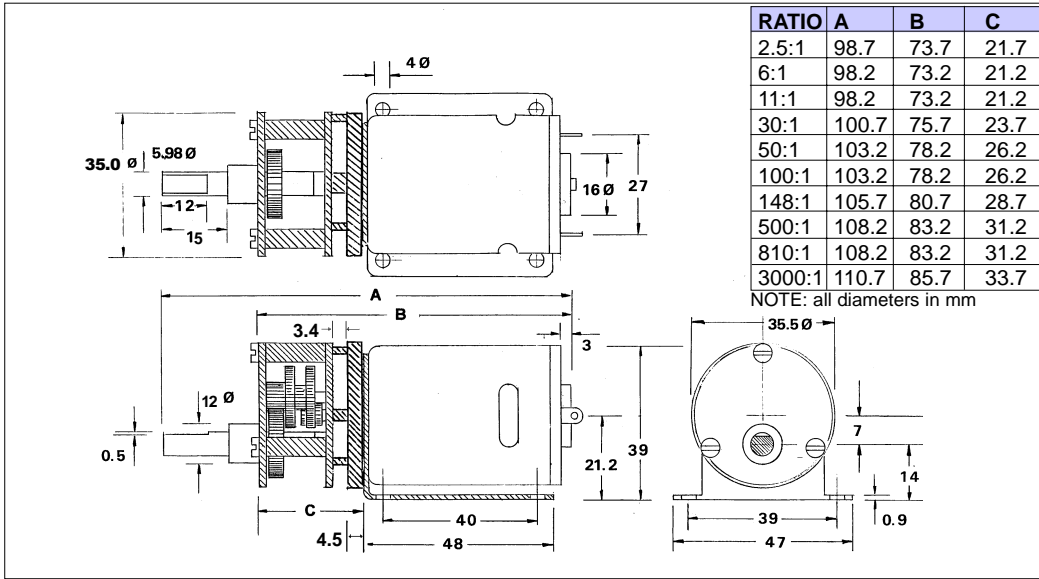
#### IMPORTANT NOTICE

At very low ratios the torque produced by this geared motor combination may exceed the maximum permissible torque of the gearbox. In this situation the unit must not be allowed to stall as this may damage the gears.

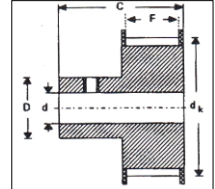
#### IMPORTANT NOTICE

Due to the wide range of applications for this product it is the users responsibility to establish the products suitability for their individual purpose(s).

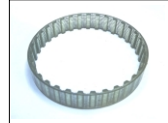
## 919D SERIES 35mm SINGLE RATIO METAL GEARBOX



### TIMING PULLEYS



### TIMING BELTS



FOR FURTHER DETAILS SEE PAGE 2

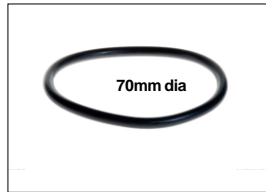
## ACCESSORIES FOR 919D SERIES GEARBOX.



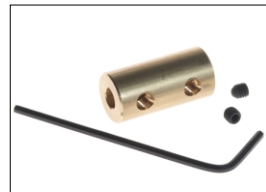
**Part No. 1071.**  
M3 Anti vibration mount. 9g  
**Part No. 1072**  
M4 Anti vibration mount. 30g



Universal Couplings. 12.5mm dia. 44mm length. **Part No. 1105/60.** 6mm - 6mm. See Page 63 for full range of combinations



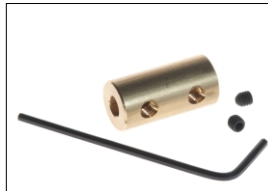
**Part No. 917D2515.** "O" Ring  
70mm x 5mm Dia. 5g



**Part No. 919D1.** In-Line  
Coupling. 6mm - 6mm. (Dia.  
12.67mm x 24.8mm). 23g



**Part No. 919D1/2.** In-line  
Coupling. 6mm-8swg (Meccano)  
Dia. 10mm x 20mm. 23g



**Part No. 919D1/8.** In-line  
Coupling. 8mm-8mm  
Dia. 12.67mm x 24.8mm. 23g



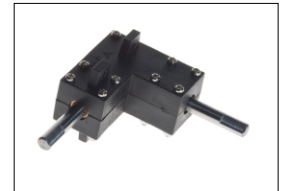
**Part No. 919D2.** Voltage  
Regulator. (6-15v DC Input.  
4v-12v output). 26mm x  
31mm x 15.5mm. 30g



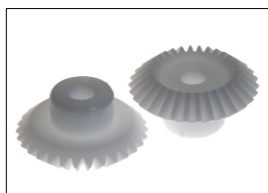
**Part No. 919D4.** Pulley  
25mm dia. (Aluminium).  
10g



**Part No. 919D5.** Pulley  
16mm dia. (Aluminium). 4g



**Part No. 919D24.** Bevel  
Gearbox. (Right Angle).  
42g



**Part No. 919D25.** Nylon Bevel  
Gears 1:1. OD30.7mm ID 6mm.  
Module 1.0. 6g



**Part No. 919D26**  
Stainless Steel shaft 5mmOD x 150mm. 23g  
**Part No. 919D26/1**  
Stainless Steel Shaft 6mmOD x 150mm. 36g  
**Part No. 919D26/2**  
Stainless Steel Shaft 8mmOD x 150mm. 59g



**Part No. 919D27.** Gear  
Adapter. 6mm bore. M10  
thread. 12g



**Bearing Blocks**  
**Part No. 919D30** 5mm I.D.  
(19.06 x 19.0mm x 10mm) 32g  
**Part No. 919D30/1** 6mm I.D.  
(20 x 20mm x 12.5mm) 32g  
**Part No. 919D30/2** 8mm I.D.  
(19.0 x 19.0mm x 13.0mm) 32g

Subject to minimum order quantities of 250 units, the following ratios are also available with a six week lead-time. The physical dimensions of these other gearboxes may vary from the data as illustrated above. Details of individual gearboxes are available upon request.

GEARBOX 10:1 WITH 540/1 MOTOR  
GEARBOX 18:1 WITH 540/1 MOTOR  
GEARBOX 60:1 WITH 540/1 MOTOR  
GEARBOX 70:1 WITH 540/1 MOTOR  
GEARBOX 75:1 WITH 540/1 MOTOR

GEARBOX 90:1 WITH 540/1 MOTOR  
GEARBOX 120:1 WITH 540/1 MOTOR  
GEARBOX 180:1 WITH 540/1 MOTOR  
GEARBOX 200:1 WITH 540/1 MOTOR  
GEARBOX 250:1 WITH 540/1 MOTOR

GEARBOX 300:1 WITH 540/1 MOTOR  
GEARBOX 350:1 WITH 540/1 MOTOR  
GEARBOX 400:1 WITH 540/1 MOTOR  
GEARBOX 450:1 WITH 540/1 MOTOR  
GEARBOX 600:1 WITH 540/1 MOTOR

GEARBOX 700:1 WITH 540/1 MOTOR  
GEARBOX 750:1 WITH 540/1 MOTOR  
GEARBOX 900:1 WITH 540/1 MOTOR  
GEARBOX 1000:1 WITH 540/1 MOTOR  
GEARBOX 1500:1 WITH 540/1 MOTOR