

IEC Appliance Inlet C14 with Filter, Fuseholder 1- or 2-pole, Line Switch 2-pole

Standard- or Medical-Filter



Order required accessories separately



Description

- Panel Mount:
Screw-on from front side
- 4 Functions:
Appliance Inlet Protection class I, Line Switch 2-pole, Fuseholder for fuse-links 5 x 20 mm 1- or 2-pole, Line filter in standard and medical version
- V-Lock notch standard
- Quick connect terminals 6.3 x 0.8 mm

Unique Selling Proposition

- Most compact power entry module
- Attractive flat design
- Switch for highest inrush current
- V-Lock cord retaining

Approvals

- VDE Certificate Number: 40001522
- UL File Number: E72928

Characteristics

- Ultra-compact design. Ideal for low profile designs
Aluminum case provides good shielding
- All single elements are already wired
- Fuse drawer meets requirements of medical standard IEC/EN 60601-1
- Ideal for application with high transient loads
Designed for standard and medical applications
- Suitable for use in equipment according to IEC/UL 60950
Suitable for use in medical equipment according to IEC/UL 60601-1

Other versions on request

- Solder terminals
- Fuse drawer 1-pole, plus spare fuse case
- Fuse drawer 2-pole, with shorting bar
- Other rocker marking
- Line switch, illuminated
- Line switch 1-pole
- Medical version M80
- Class X1- and Y1-capacitors for enhanced withstand voltage

References

Alternative: version without line filter [DD11](#)
Alternative: version for snap-in mounting [KMF](#)
Alternative: Standard version

Weblinks

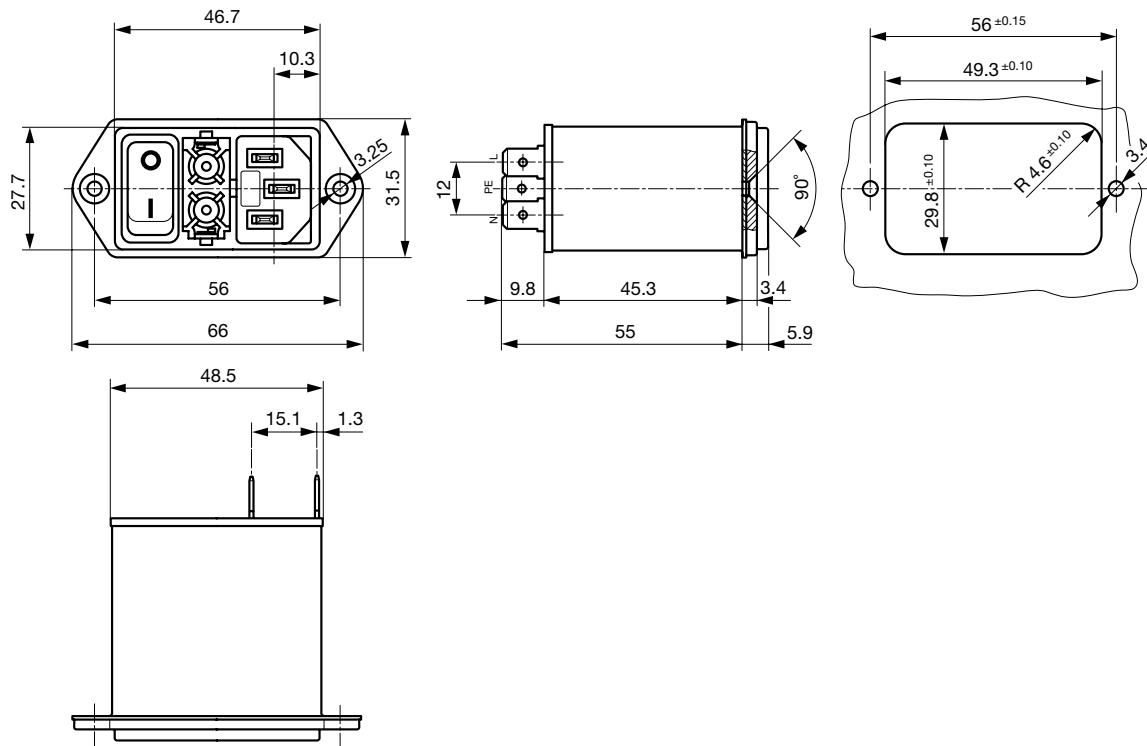
[pdf-datasheet](#), [html-datasheet](#), [General Product Information](#), [Approvals](#), [CE declaration of conformity](#), [RoHS](#), [CHINA-RoHS](#), [REACH](#), [Mating Connectors](#), [e-Shop](#), [SCHURTER-Stock-Check](#), [Distributor-Stock-Check](#), [CAD-Drawings](#), [Accessories](#), [Wire Harnessing](#), [Detailed request for product](#)

Technical Data

| | | | |
|---------------------------|--|-----------------------------------|--|
| Ratings IEC | 1 - 10A @ Ta 40 °C / 250VAC; 50Hz | Appliance-Inlet/-Outlet | C14 acc. to IEC 60320 |
| Ratings UL/CSA | 1 - 8A @ Ta 40 °C / 250VAC; 60Hz | | UL 498, CSA C22.2 no. 42 (for cold conditions) pin-temperature 70 °C, 10A, Protection Class I |
| Leakage Current | standard < 0.5 mA (250 V / 60 Hz) medical < 5 µA (250 V / 60 Hz) | Fuseholder | 1 or 2 pole, Shocksafe category PC2 acc. to IEC 60127-6, for fuse-links 5 x 20mm |
| Dielectric Strength | > 1.7 kVDC between L-N > 2.7 kVDC between L/N-PE Test voltage (1 min/50Hz) | Rated Power Acceptance @ Ta 23 °C | 5 x 20: 2W (1 pole)/ 1.6W (2-pole) per pole |
| Allowable Operation Temp. | -25 °C to 85 °C | Power Acceptance @ Ta > 23°C | Admissible power acceptance at higher ambient temperature see derating curves |
| Climatic Category | 25/085/21 acc. to IEC 60068-1 | Line Switch | Rocker switch 2-pole, non-illuminated, acc. to IEC 61058-1 Technical Details |
| Degree of Protection | from front side IP 40 acc. to IEC 60529 | Line Filter | Standard and Medical Version, IEC 60939, UL 1283, CSA C22.2 no. 8 Technical Details |
| Protection Class | Suitable for appliances with protection class I acc. to IEC 61140 | MTBF | > 2'000'000h acc. to MIL-HB-217 F |
| Terminal | Quick connect terminals 6.3 x 0.8 mm | | |
| Panel Thickness s | Screw-on mounting: max 8mm Mounting screw torque max 0.5Nm | | |
| Material: Housing | Thermoplastic, black, UL 94V-0 | | |

Dimensions

Screw version

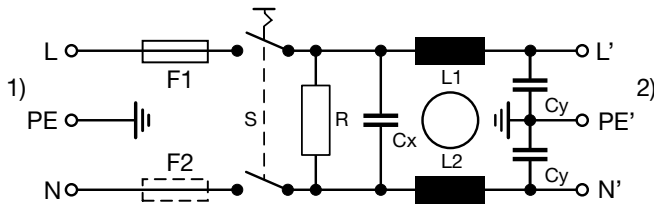


Technical Data of Filter-Components

| Rated Current [A] | Filter-Type | Inductances L [mH] | Capacitance CX [nF] | Capacitance CY [nF] | R [MΩ] |
|-------------------|-----------------------|--------------------|---------------------|---------------------|--------|
| 1 | Standard Version | 2 x 10 | 100 | 2.2 | 1 |
| 2 | Standard Version | 2 x 4 | 100 | 2.2 | 1 |
| 4 | Standard Version | 2 x 1.5 | 100 | 2.2 | 1 |
| 6 | Standard Version | 2 x 0.8 | 100 | 2.2 | 1 |
| 8 | Standard Version | 2 x 0.6 | 100 | 2.2 | 1 |
| 10 | Standard Version | 2 x 0.3 | 100 | 2.2 | 1 |
| 1 | Medical Version (M5) | 2 x 10 | 100 | - | 1 |
| 2 | Medical Version (M5) | 2 x 4 | 100 | - | 1 |
| 4 | Medical Version (M5) | 2 x 1.5 | 100 | - | 1 |
| 6 | Medical Version (M5) | 2 x 0.8 | 100 | - | 1 |
| 8 | Medical Version (M5) | 2 x 0.6 | 100 | - | 1 |
| 10 | Medical Version (M5) | 2 x 0.3 | 100 | - | 1 |
| 1 | Medical Version (M80) | 2 x 10 | 100 | 0.47 | 1 |

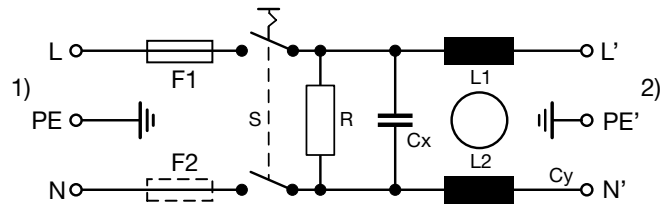
Diagrams

Standard version
non-illuminated



1) Line
2) Load

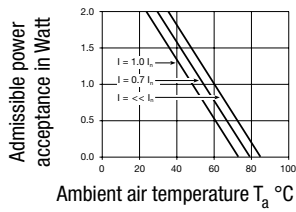
Medical version M5
non-illuminated



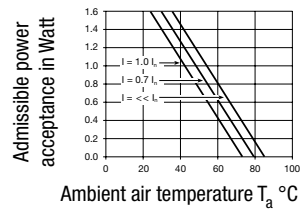
1) Line
2) Load

Derating Curves

1-pole



2-pole

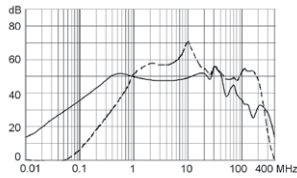


Attenuation Loss

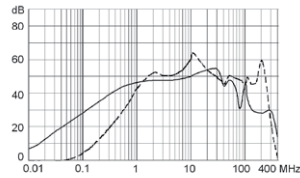
--- differential mode ____ common mode

Standard version

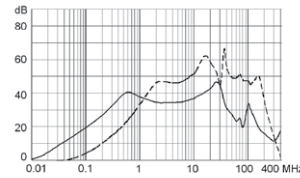
1 A



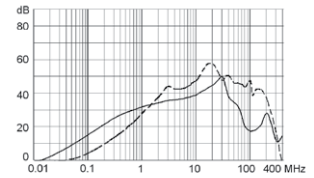
2 A



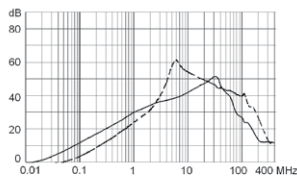
4 A



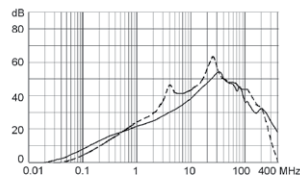
6 A



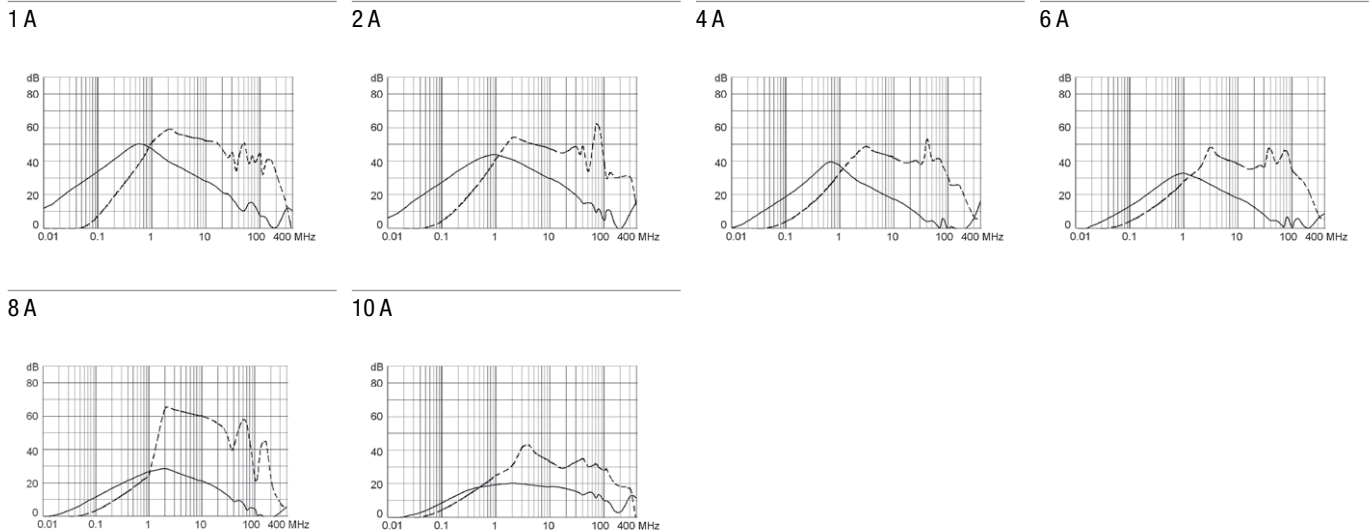
8 A



10 A



Medical version (M5)



All Variants

| Rated Current [A] | Filter-Type | Fuseholder | Line Switch | Illumination | Order Number |
|-------------------|-----------------------|------------|-------------|--------------------|---------------|
| 1 | Standard Version | 1-pole | 2-pole | non-illuminated | DD12.1111.111 |
| 2 | Standard Version | 1-pole | 2-pole | non-illuminated | DD12.2111.111 |
| 4 | Standard Version | 1-pole | 2-pole | non-illuminated | DD12.4111.111 |
| 6 | Standard Version | 1-pole | 2-pole | non-illuminated | DD12.6111.111 |
| 8 | Standard Version | 1-pole | 2-pole | non-illuminated | DD12.8111.111 |
| 10 | Standard Version | 1-pole | 2-pole | non-illuminated | DD12.9111.111 |
| 1 | Standard Version | 2-pole | 2-pole | non-illuminated | DD12.1121.111 |
| 2 | Standard Version | 2-pole | 2-pole | non-illuminated | DD12.2121.111 |
| 2 | Standard Version | 2-pole | 2-pole | illuminated, green | DD12.2124.111 |
| 4 | Standard Version | 2-pole | 2-pole | non-illuminated | DD12.4121.111 |
| 6 | Standard Version | 2-pole | 2-pole | non-illuminated | DD12.6121.111 |
| 6 | Standard Version | 2-pole | 2-pole | illuminated red | DD12.6123.111 |
| 8 | Standard Version | 2-pole | 2-pole | non-illuminated | DD12.8121.111 |
| 10 | Standard Version | 2-pole | 2-pole | non-illuminated | DD12.9121.111 |
| 1 | Medical Version (M5) | 2-pole | 2-pole | non-illuminated | DD12.1321.111 |
| 2 | Medical Version (M5) | 2-pole | 2-pole | non-illuminated | DD12.2321.111 |
| 4 | Medical Version (M5) | 2-pole | 2-pole | non-illuminated | DD12.4321.111 |
| 6 | Medical Version (M5) | 2-pole | 2-pole | non-illuminated | DD12.6321.111 |
| 8 | Medical Version (M5) | 2-pole | 2-pole | non-illuminated | DD12.8321.111 |
| 10 | Medical Version (M5) | 2-pole | 2-pole | non-illuminated | DD12.9321.111 |
| 1 | Medical Version (M80) | 2-pole | 2-pole | non-illuminated | DD12.1621.111 |


Most Popular.

Availability for all products can be searched real-time: <http://www.schurter.com/en/Stock-Check/Stock-Check-SCHURTER>


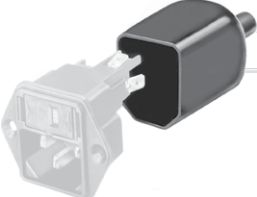

10 A version only IEC approval.

Packaging unit 20 Pcs



Required Accessory

| | Description | |
|---|--|-----------|
|  | Fusedrawer 2 Fusedrawer für Fuse Links 5x20 mm, with or without Voltage Selector Insert | |
| | Fingergrip, 2-pole | 4301.1401 |
| | Extra-Safe, 2-pole | 4301.1403 |
| | Fingergrip, 1-pole | 4301.1405 |
| | Extra-Safe, 1-pole | 4301.1407 |
| | ... | |

Accessories

| | | |
|---|---|-----------|
|  | Wire Harness Wire harness for SCHURTER products | |
| | | |
|  | Assorted Covers Rear Cover | |
| | | 0859.0076 |
|  | Cord retaining kits Cord retaining strain relief | |
| | Flat head, A | 4700.0001 |

Mating Outlets/Connectors

| | Category / Description | |
|---|---|---------|
|  | Appliance Outlet Overview complete | |
| | IEC Appliance Outlet F, Screw-on Mounting, Front Side, Solder Terminal | 4787 |
| | IEC Appliance Outlet F, Snap-in Mounting, Front Side, Solder or Quick-connect Terminal | 4788 |
| | IEC Appliance Outlet F or H, Screw-on Mounting, Front Side, Solder, PCB or Quick-connect Terminal | 5091 |
| | Appliance Outlet further types to DD12 | |
|  | Connector Overview complete | |
| | 4782 Mounting: Power Cord, 3 x 1 mm ² / 3 x 18 AWG, Cable, Connector: IEC C13 | 4782 |
| | 4022 Mounting: Power Supply Cord, 3 x 1.5 mm ² , Screw clamps, Connector: IEC C13 | 4022 |
| | 4785 Mounting: Power Cord, 3 x 1 mm ² / 3 x 18 AWG, Cable, Connector: IEC C13 | 4785 |
| | 4300-06 Mounting: Power Cord, 3 x 1 mm ² / 3 x 18 AWG, Cable, Connector: IEC C13 | 4300-06 |
| | 4012 Mounting: Power Supply Cord, 3 x 1.5 mm ² , Screw clamps, Connector: IEC C13 | 4012 |
| | Connector further types to DD12 | ... |

Mating Outlets/Connectors shuttered



[Power Cord Overview complete](#)

| | |
|--|-----------|
| VAC17KS, North America, V-Lock cord retaining, 2.0 m, Connector C17, cord end: | 6051.2801 |
| VAC17KS, Europlug, V-Lock cord retaining, 2.0 m, Connector IEC C17, cord end: | 6051.2803 |
| VAC13KS, Overview, diverse Connector IEC C13, cord end: | VAC13KS |

[Power Cord further types to DD12](#)