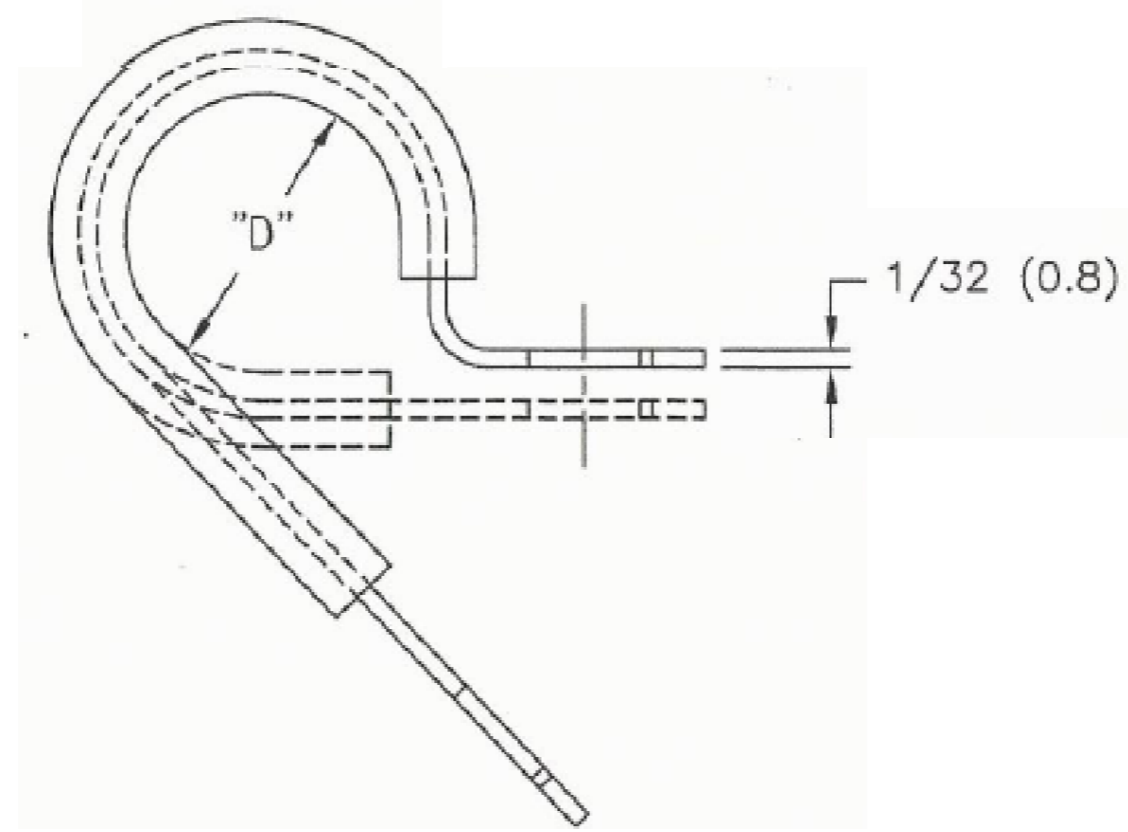
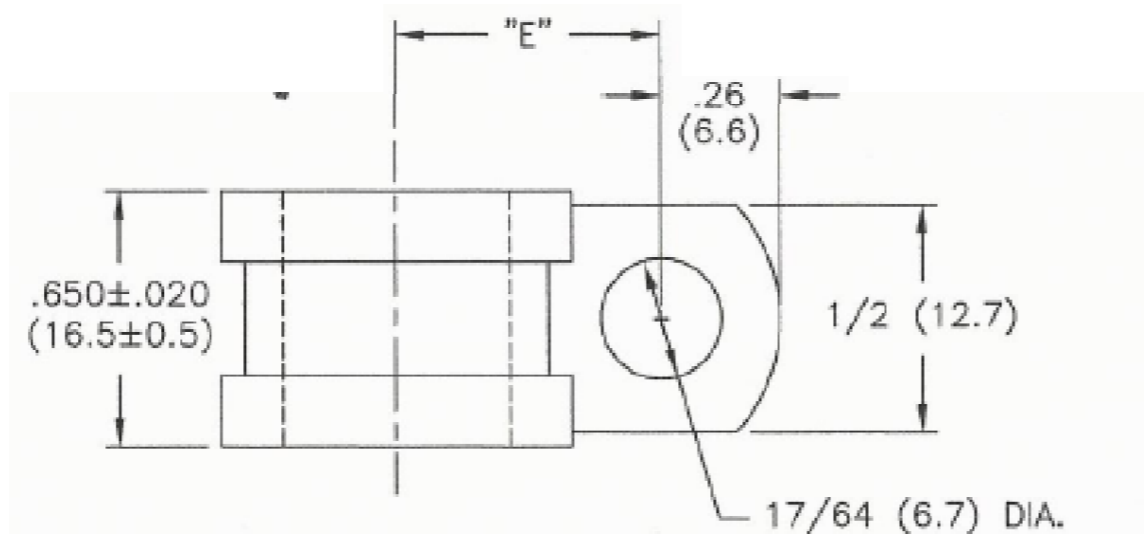


DEBUR AND BREAK SHARP EDGES

DO NOT SCALE DRAWING

REVISION



PART No.	HOLDING DIA "D"	"E" REF
TRSPN-3	3/16 (4.8)	0.50 (12.7)
TRSPN-4	1/4 (6.4)	0.53 (13.5)
TRSPN-5	5/16 (7.9)	0.56 (14.2)
TRSPN-6	3/8 (9.5)	0.59 (15.0)
TRSPN-7	7/16 (11.1)	0.62 (15.7)
TRSPN-8	1/2 (12.7)	0.65 (16.5)
TRSPN-9	9/16 (14.3)	0.75 (19.1)
TRSPN-10	5/8 (15.9)	0.78 (19.8)
TRSPN-11	11/16 (17.5)	0.81 (20.6)
TRSPN-12	3/4 (19.1)	0.84 (21.3)
TRSPN-14	7/8 (22.2)	0.90 (22.9)
TRSPN-16	1.0 (25.4)	0.96 (24.4)
TRSPN-18	1-1/8 (28.6)	1.05 (26.7)
TRSPN-20	1-1/4 (31.8)	1.11 (28.7)

A DRAWN 16/07/14

NOTES

- 1) CLAMP -COLD ROLLED STEEL (RMS-198)  
-ZINC ELECTROPLATE (RMS-339)
- 2) SLEEVE - SANTOPRENE (RMS-67)  
- MEETS MILS R-3065 & AMS-3209 SPECS.



DESIGN RIGHT. TR FASTENINGS LTD, 2003  
UNDER NO CIRCUMSTANCES MUST THIS  
DRAWING BE COPIED OR DISCLOSED,  
WITHOUT FIRST OBTAINING WRITTEN  
AUTHORITY.

UNLESS OTHERWISE SPECIFIED:  
DIMENSIONS ARE IN MILLIMETERS  
SURFACE FINISH:  
TOLERANCES:

ISO 2768 m	
NAME	DATE
DRAWN MARTIN ELLIOTT	16/07/14
CHK'D	
APP'VD	

CUSTOMER PART No

MATERIAL: SEE NOTES

HEAT TREATMENT  
N/A

FINISH: N/A

TITLE:  
STEEL CLAMP  
SANTOPRENE LINED

DWG NO. TRSPN-XX A3