

Cable Assembly

Display Port Plug to HDMI Type A Receptacle

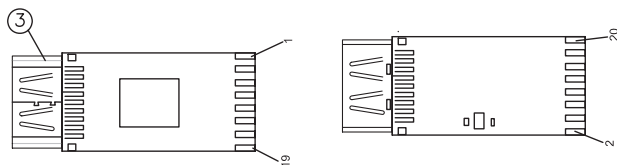
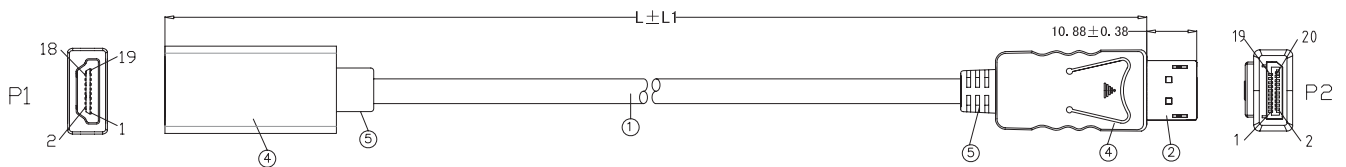
multicomp PRO



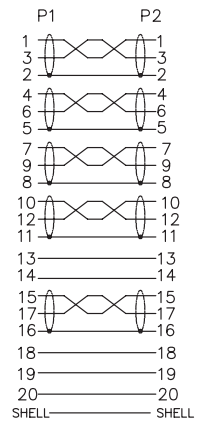
Specifications

Cable Length : 200mm, 1m
 Connector Type A : 20P Display Port Plug
 Connector Type B : 20P HDMI Type A Receptacle

Diagram



Pin Out



Part Number	L ± L1
MP009307	200 ± 30mm
MP009262	1000 ± 30mm

Dimensions : Millimetres

1. Cable

[(7/0.08TC) * 1P+D(7/0.08TC)+FAM] * 5+(7/0.08TC) * 5C + AL-FOIL+DRAIN WIRE (1/0.254BC) + BRAID(80/0.12AL-MG)
 White PVC Jacket
 O.D: 4.8mm ± 0.2mm

2. Connector Type A

Display Port Plug
 Soldering
 Black Insulation
 Gold Plated Pin
 Nickel Shell
 Plastic Hood: ABS Shell, White

Newark.com/multicomp-pro
 Farnell.com/multicomp-pro
 sg.element14.com/b/multicomp-pro

multicomp PRO

Cable Assembly

Display Port Plug to HDMI Type A Receptacle



3. Connector Type B

- HDMI Type A Receptacle
- Soldering
- White Insulation
- Gold Plated Pin
- Nickel Shell
- Plastic Hood: ABS Shell, White

4. Inner Molded

- LDPE

5. Outer Molded

- 45P PVC, White

Part Number Table

Description	Part Number
Cable Assembly, Display Port Plug to HDMI Type A Receptacle, 20P, White, 200mm	MP009307
Cable Assembly, Display Port Plug to HDMI Type A Receptacle, 20P, White, 1m	MP009262

Important Notice : This data sheet and its contents (the "Information") belong to the members of the AVNET group of companies (the "Group") or are licensed to it. No licence is granted for the use of it other than for information purposes in connection with the products to which it relates. No licence of any intellectual property rights is granted. The Information is subject to change without notice and replaces all data sheets previously supplied. The Information supplied is believed to be accurate but the Group assumes no responsibility for its accuracy or completeness, any error in or omission from it or for any use made of it. Users of this data sheet should check for themselves the Information and the suitability of the products for their purpose and not make any assumptions based on information included or omitted. Liability for loss or damage resulting from any reliance on the Information or use of it (including liability resulting from negligence or where the Group was aware of the possibility of such loss or damage arising) is excluded. This will not operate to limit or restrict the Group's liability for death or personal injury resulting from its negligence. Multicomp Pro is the registered trademark of Premier Farnell Limited 2019.

Newark.com/multicomp-pro
Farnell.com/multicomp-pro
sg.element14.com/b/multicomp-pro

