

## RANA LED Surface 1500

### RANA LED S 1500 HO 4K LOUV+PRI W GEN2

#### 0051531



#### Product features

- Surface or Suspended LED Linear luminaire with Louvre + Prismatic Optic, Direct Light Distribution, Luminaire Dimensions: 1440x187x47mm, Sylvania White body colour, IP20, IK07, Light Engine Dimensions: 1410x165mm, Constant Current, Low LED flicker (+/-5%), Neutral White (4000K) LED Colour Temperature, 7500lm, 62W, 121lm/W efficacy, CRI>80, 3 SDCM (3-step MacAdam ellipse) LED Colour Consistency, UGR<19, Luminance at 65° < 3000 cd/m2, Lumen Maintenance: L90B10 at 50,000 hours, Quick electrical connection with push-connectors in the luminaire, Glow Wire Test 850°C.



#### PRODUCT OVERVIEW

Product name	RANA LED S 1500 HO 4K LOUV+PRI W GEN2
Technology	LED
Cap/Base	N/A
Housing	Steel
Mount	Ceiling surface mounting, Suspended
General application	Office, Hospitality, Retail, Education
ETIM Class	EC002892
E-number FI	4273716
Warranty	5 years
Fixture luminous flux (lm)	7500
Luminous flux (lm)	7500
Luminaire efficacy (lm/W)	113
Colour temperature (K)	4000
Light colour	Neutral White
CRI (Ra)	80
Colour Variation Initial (SDCM)	SDCM3
Glare control	< 19
Photobiological Risk Group	RG0
Total power consumption (W)	62
Electrical protection	Class I
Control gear type	LED driver constant current
Dimmable	No
Housing colour	White
IP rating	IP20
IK rating	IK07
Product EAN number	5410288515311

#### DATA TABLE

##### General data

Product name	RANA LED S 1500 HO 4K LOUV+PRI W GEN2
Technology	LED

## RANA LED Surface 1500

*RANA LED S 1500 HO 4K LOUV+PRI W GEN2*

0051531

Cap/Base	N/A
Housing	Steel
Mount	Ceiling surface mounting, Suspended
General application	Office, Hospitality, Retail, Education
Performance ambient temperature Tq (°C)	25
ETIM Class	EC002892
E-number FI	4273716
Warranty	5 years

### Optical data

Fixture luminous flux (lm)	7500
Luminous flux (lm)	7500
Luminaire efficacy (lm/W)	113
Colour temperature (K)	4000
Light colour	Neutral White
CRI (Ra)	80
Colour Variation Initial (SDCM)	SDCM3
Glare control	< 19
Photobiological Risk Group	RG0

### Electrical data

Total power consumption (W)	62
Mains voltage (V)	220-240V
Lamp power factor	0.98
Electrical protection	Class I
Control gear required	No
Control gear type	LED driver constant current
Dimmable	No
Drive current (mA)	525
Inrush Current (A)	57.7
Inrush Duration (µs)	217
Glow Wire Test (°C)	850
Energy Efficiency Class (A->G) of contained light source	C, C(more than 1 Light Source)
Nominal Frequency (Hz)	50/60Hz
Max. Luminaires per 10A C Breaker	10
Max. Luminaires per 13A C Breaker	13
Max. Luminaires per 16A C Breaker	16
Max. Luminaires per 20A C Breaker	21
Max. Luminaires per 10A B Breaker	6
Max. Luminaires per 13A B Breaker	8
Max. Luminaires per 16A B Breaker	10
Max. Luminaires per 20A B Breaker	12

### Lifetime data

Lifespan L70 B50	50000
Lifespan L70 B10	50000
Lifespan L80 B50	50000
Lifespan L80 B10	50000

## RANA LED Surface 1500

RANA LED S 1500 HO 4K LOUV+PRI W GEN2  
0051531

Lifespan L90 B50	50000
Lifespan L90 B10	50000

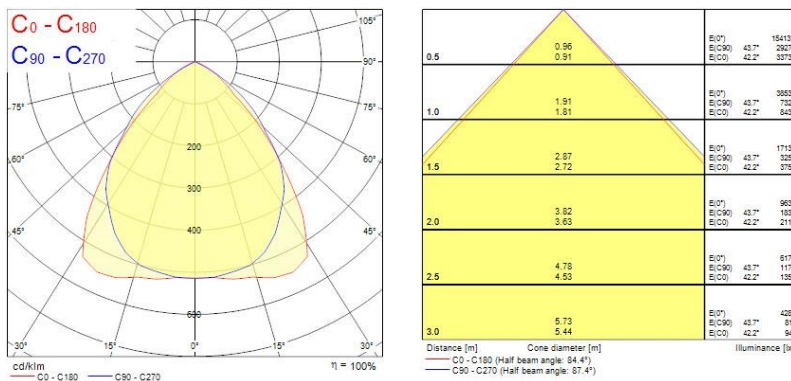
### Physical data

Housing colour	White
IP rating	IP20
IK rating	IK07
Diffuser finish	Prismatic
Diffuser material	PC Polycarbonate
Nominal Product Length (mm)	1460
Nominal Product Width (mm)	187
Nominal Product Height (mm)	47
Weight (kg)	3.9

### Packaging

Single packaging type	Carton
Product EAN number	5410288515311
Packaging single length / height (cm)	153.5
Packaging single width (cm)	6.5
Packaging single depth (cm)	21.0
DUN14 (outer)	05410288515311
Units per outer package	1
Packaging outer length / height (cm)	153.5
Packaging outer width (cm)	6.5
Packaging outer depth (cm)	21.0

## PHOTOMETRY



## TECHNICAL DRAWINGS

