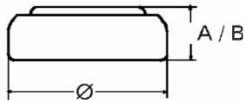


| | |
|---------------------------------|---|
| Type Number | 386 |
| Designation IEC | SR 43 |
| System | Silver oxide/ Zinc / NaOH -Electrolyte |
| Nominal Voltage | 1.55 V |
| Typical Capacity C | 115 mAh |
| Temperature Ranges | min max. |
| Storage | 0°C 60°C |
| Discharge..... | 0°C 60°C |



| | | |
|-------------------------------|--------|------|
| Dimensions | min | max |
| Diameter..... | 11,25 | 11,6 |
| Height (A/B)..... | 3,80 | 4,2 |
| Weight (approx.) | 1,56 g | |

Typical Capacities (at 20°C)

| | |
|-----------------------------|------------------------|
| Discharge Type | Continuous 24h/d, 7d/w |
| Load | 5600 Ω |
| End Voltage | 1.2V |
| Time | 620 h |

No publication or circulation of data to third parties without consent of VARTA Consumer Batteries

All Data contained herein is for single cells.
For battery applications, performance data may vary from single cell data, depending on specific battery configuration.