

Gear for SDW-T lamps

BSL 35 L327 230/240V 50Hz BC1-118

CSLS electronic control unit with impregnated (HID 'BASIC') or encapsulated (HID 'Heavy Duty') electromagnetic ballasts

Product data

• General Characteristics

Rated Number of Lamps	1 piece
Rated Ballast-Lamp Power	35
Rated Lamptype	SDW
Application code	L327
Line Voltage	230/240 V
Line Frequency	50 Hz
Design	BC1-118

• Operating Characteristics

Input current with PF-correct.	0.20 A
Input current w/o PF-correct.	0.48 A
Mains voltage safety (AC)	-10%/+10%
Mains voltage performance (AC)	-8%/+6%
PowerFactor 100% output power	0.87 -
PowerFactor w/o PF compens.	0.40 -
Power losses gear	6.3 W

• Wiring Characteristics

Connector type	Insert
Striplength	7.0 mm
Wcs Ballast contacts	0.70-6.00 mm ²

• Temperature Characteristics

T-storage	-30 (min), 130 (max) C
-----------	------------------------

T-winding maximum (tw)	130 (max) C
Delta-T normal conditions	40 C

• Approval & Application Chars

CE marking	Yes
ENEC certificate	Yes

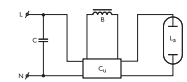
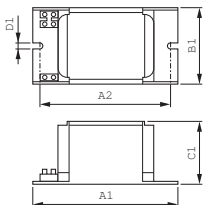
• Product Dimensions

Length A1	118.0 mm
Fixing Hole Distance	94.0 mm
Length A2	
Width B1	61.0 mm
Height C1	52.0 mm
Fixing Hole Diameter D1	6.2 mm

• Product Data

Order code	913700235426
Full product code	913700235426
Full product name	BSL 35 L327 230/240V 50Hz BC1-118
Order product name	BSL 35 L327 230/240V 50Hz BC1-118
Pieces per pack	1
Packing configuration	6
Packs per outerbox	6
Bar code on pack - EAN1	8711500744142
Bar code on outerbox - EAN3	8711500744159
Logistic code(s) - 12NC	913700235426
Net weight per piece	0.870 kg

Dimensional drawing



Product	A1 (Norm)	A2 (Norm)	B1 (Norm)	C1 (Norm)	D1 (Norm)
BSL 35 L327 230/240V 50Hz BC1-118	118.0	94.0	61.0	52.0	6.2



© 2011 Koninklijke Philips Electronics N.V.
All rights reserved.

Specifications are subject to change without notice. Trademarks are the property of Koninklijke Philips Electronics N.V. or their respective owners.

www.philips.com/lighting

2011, June 7
data subject to change