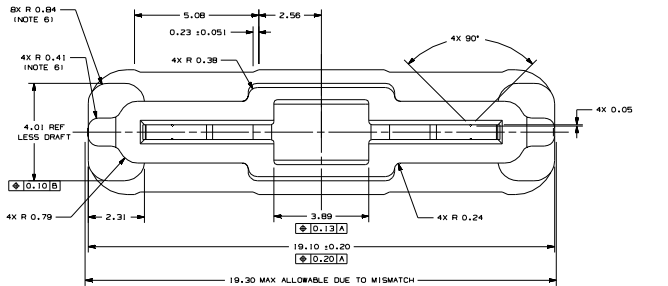
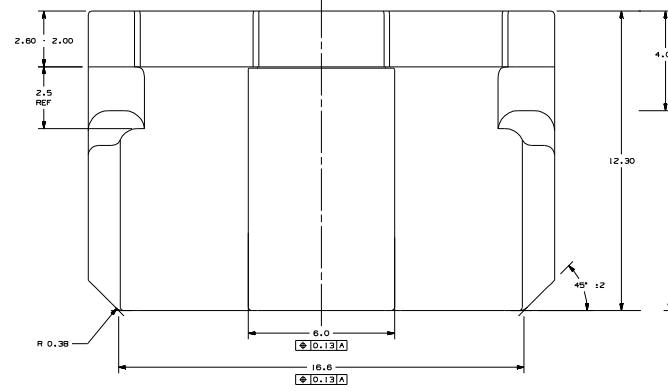
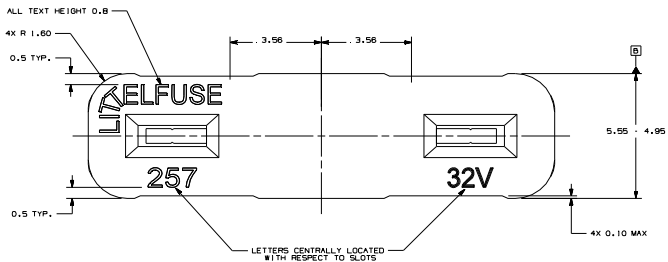
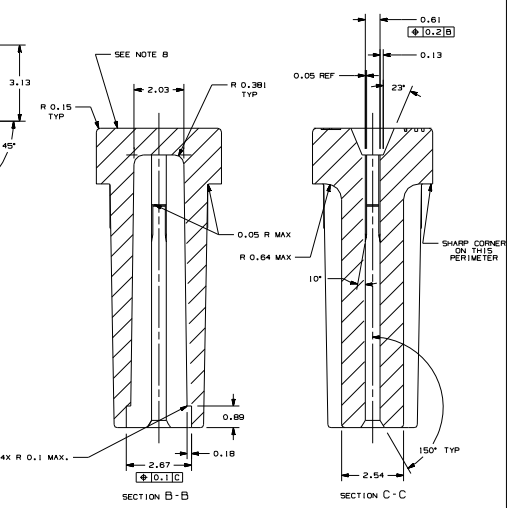
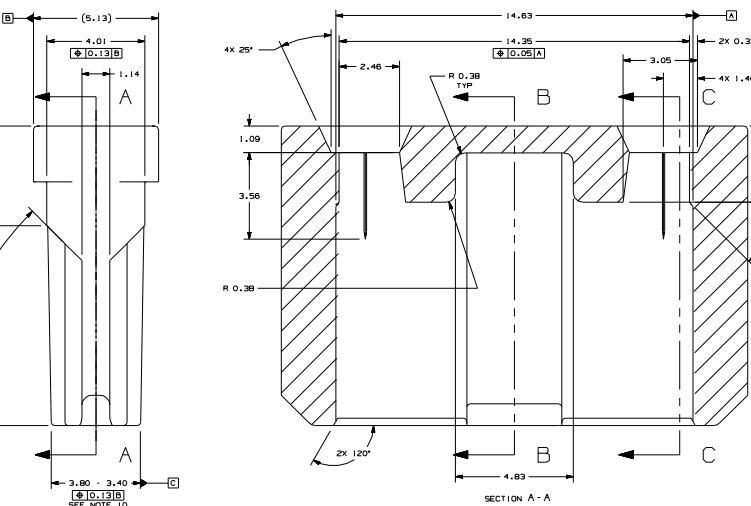


DATE	REVISION	CHK	APP
10/11/08	0000000000 RELEASE 000		
10/20/08	0000000000 SPECIFIC CHANGES TO THIS DRAWING		
03/16/09	0000000000 ADD DIMENSIONS ON PART IN THE ATTACHED PART NUMBER		
	0000000000 CHANGE TO PART NUMBER		
	0000000000 PART NO. FROM REV TO 000000		
	0000000000 PART NO. FROM REV TO 000000		
	0000000000 PROPORTION FROM DEC TO 3311		
06/19/11	0000000000 RELEASE SEE ECO 000		
11/28/11	0000000000 ADD PATENT NUMBER FROM DRAWING OF THE FUSE - DPL		
04/08/13	0000000000 RELEASE SEE ECO 000		



- NOTES:
- 1" DRAFT PER SIDE MAXIMUM UNLESS OTHERWISE SPECIFIED.
 - EJECTOR PIN MARKS (UP TO 0.5MM MAX) BELOW RESPECTIVE SURFACES.
 - NO SCORING TRACES TO APPEAR ON PART.
 - UNLESS OTHERWISE SPECIFIED, ALL ANGLES TO BE 90°.
 - UNLESS OTHERWISE SPECIFIED, ALL CORNERS AND EDGES ROUNDED TO 0.1 R.
 - BLEND 0.625 RADIUS IN A CONICAL SHAPE TO THE 0.406 RADIUS ALONG THE 45° SLOPE IN 4 PLACES.
 - ALL CHARACTER RESSES 0.254 MAX.
 - MAXIMUM ALLOWABLE SINK SHALL NOT EXCEED 0.05mm, NO PROTRUSIONS ALLOWED.
 - COLD FLOW LINES SHALL NOT EXCEED 5.28mm IN LENGTH.
 - THIS DIMENSION TO BE CHECKED WITH EITHER ES-001014, ES-001015, ES-001016, OR ES-001017
 - ELEMENTS IN POSITION (OR EQUIVALENT GAGE PINS) SEE 0587000 PINK DWG.
 - USE RESIN 057929 OR 057930, AS AN ALTERNATIVE.



PART NUMBER	RATING	MATERIAL	COLOR	BASE MATERIAL PW NO (SEE NOTE 11)	QTY/M	COLOR CONCENTRATE PW NO.	QTY/M	PROPORTION
287000-313	40	NYLON 6/6	ORANGE	057357	1.4273	057804	0.0433	3311
287000-312	35	NYLON 6/6	GREEN-BLUE	057357	1.4273	057807	0.0433	3311
287000-311	30	NYLON 6/6	GREEN	057357	1.4273	057803	0.0433	3311
287000-310	25	NYLON 6/6	NATURAL	057357	1.4273	057806	0.0433	3311
287000-309	20	NYLON 6/6	YELLOW	057357	1.4273	057809	0.0433	3311
287000-308	15	NYLON 6/6	BLUE	057357	1.4273	057880	0.0433	3311
287000-307	10	NYLON 6/6	RED	057357	1.4273	057879	0.0433	3311
287000-306	7.5	NYLON 6/6	BROWN	057357	1.4273	057878	0.0433	3311
287000-305	5	NYLON 6/6	TAN	057357	1.4273	057877	0.0433	3311
287000-304	4	NYLON 6/6	PINK	057357	1.4273	057876	0.0433	3311
287000-303	3	NYLON 6/6	VIOLET	057357	1.4273	057875	0.0433	3311
287000-302	2	NYLON 6/6	GRAY	057357	1.4273	057874	0.0433	3311
287000-301	1	NYLON 6/6	BLACK	057357	1.4273	057302	0.0433	3311

NO	SEE CHART	COLOR CONCENTRATE	SEE CHART	LB
1	SEE CHART	BASE MATERIAL		T LB
NO	COMPONENT NO	DESCRIPTION		QTY/M / LBS

BILL OF MATERIAL

UNLESS OTHERWISE SPECIFIED, DIMENSIONS ARE IN MILLIMETERS. DIMENSIONS IN BRACKETS () ARE IN INCHES.

UNLESS OTHERWISE SPECIFIED, DIMENSIONS DO NOT INCLUDE PLATING.

(C) DENOTES CRITICAL CHARACTERISTICS.

(CPK) DENOTES ONE DIMENSION - MINIMUM ONE VALUE

(ST) DENOTES A CHARACTERISTIC THAT PROVIDES AN INDICATION OF PROCESS PERFORMANCE. PROCEDURE FOR MEASUREMENT AND FINISHING TO BE REFERRED TO IN THE DRAWING.

(CP) DENOTES INSPECTION INSTRUCTIONS. LIMITED TO DIMENSIONS - MINIMUM OF VALUE MUST BE WITHIN THE DIMENSIONAL LIMITATIONS SHOWN OR SHOWN AND INITIALLY LOCATED TO ALLOW FOR MAXIMUM TOOL LIFE.

DENOTES DIMENSIONS - MINIMUM ONE VALUE

SEE TABLE

COPIES TO

1 9

2 10 FINISH

3 12 20

4 13 21

5 14 23

6 15 33

7 16 43

8 17 53

9 18 63

10 19 73

11 20 83

12 21 93

13 22 103

14 23 113

15 24 123

16 25 133

17 26 143

18 27 153

19 28 163

20 29 173

21 30 183

22 31 193

23 32 203

24 33 213

25 34 223

26 35 233

27 36 243

28 37 253

29 38 263

30 39 273

31 40 283

32 41 293

33 42 303

34 43 313

35 44 323

36 45 333

37 46 343

38 47 353

39 48 363

40 49 373

41 50 383

42 51 393

43 52 403

44 53 413

45 54 423

46 55 433

47 56 443

48 57 453

49 58 463

50 59 473

51 60 483

52 61 493

53 62 503

54 63 513

55 64 523

56 65 533

57 66 543

58 67 553

59 68 563

60 69 573

61 70 583

62 71 593

63 72 603

64 73 613

65 74 623

66 75 633

67 76 643

68 77 653

69 78 663

70 79 673

71 80 683

72 81 693

73 82 703

74 83 713

75 84 723

76 85 733

77 86 743

78 87 753

79 88 763

80 89 773

81 90 783

82 91 793

83 92 803

84 93 813

85 94 823

86 95 833

87 96 843

88 97 853

89 98 863

90 99 873

91 100 883

92 101 893

93 102 903

94 103 913

95 104 923

96 105 933

97 106 943

98 107 953

99 108 963

100 109 973

CAD GENERATED DRAWING - NO PENCIL CHANGES ALLOWED