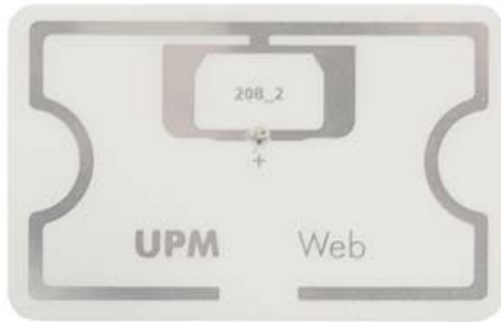


### Product type designation

### RF630L transponder

SIMATIC RF630L SMARTLABEL INLAY PET 54X34 MM; ISO 18000-6C, EPC CLASS 1 GEN 2 FREQUENCY 860 MHZ UP TO 960 MHZ CHIP TYPE, NXP G2XM 240 BIT EPC MEMORY 64 BYTE ADD-ON MEMORY -40 UP TO +65 DGR/C; 2000 PCS PER EACH ROLL MINIMAL ORDER QUANTITY 2000 PCS



### Wireless frequencies

Operating frequency	860 ... 960 MHz
---------------------	-----------------

### Electrical data

Range / maximum	4 m; observe system manual RF600: overrange is possible, range is reader dependent: observe <a href="http://support.automation.siemens.com/WW/view/en/67384964">http://support.automation.siemens.com/WW/view/en/67384964</a>
Protocol / with radio transmission	EPCglobal Class 1 Gen 2 / ISO 18000-6C
Transfer rate / with radio transmission / maximum	320 kbit/s
Product property / multitag-capable	Yes
Polarization	Linear
Product component / Backup battery	No

### Memory

Type of memory	EEPROM
Storage capacity / of the user memory	64 byte
Type of memory organization	EPC memory 96/240 bits, user memory 64 bytes (512 bits), TID memory 8 bytes
Number of read cycles / at ambient temperature < 40 °C / maximum	100000000000000
Number of write cycles / at ambient temperature < 40 °C / maximum	100000
Data retention time / at ambient temperature < 40 °C / not less than	10 y
Property of memory	lock, unlock, kill, write protection, password protection
Type of transponder chip used	NXP G2XM

Mechanical data	
Material	PET
Color	transparent
Mounting distance / relating to metal surfaces / recommended / minimum	3 mm

Permitted ambient conditions	
Ambient temperature	
<ul style="list-style-type: none"> <li>during read/write access</li> </ul>	-40 ... +65 °C
<ul style="list-style-type: none"> <li>outside the read/write area</li> </ul>	-40 ... +80 °C
<ul style="list-style-type: none"> <li>during storage</li> </ul>	15 ... 25 °C
Ambient condition / for operation	Maximum storage life 2 years at 40 to 60 % humidity, operating temperature permanent up to 65 °C, up to 80 °C for 200 cycles
Protection class IP	IP65
Resistance to mechanical stress	Torsion and bending stress conditionally permissible

Design, dimensions and weight	
Width	34 mm
Height	0.3 mm
Depth	54 mm
Net weight	1 g
Mounting type	one-side adhesible onto plastic / foil

Product properties, functions, components / general	
Product property	
<ul style="list-style-type: none"> <li>printable</li> </ul>	Yes
Printing process	Thermal transfer process (currently only using Toshiba B-SX4T)

Further Information / Internet Links	
Internet-Link	
<ul style="list-style-type: none"> <li>to website: Selector SIMATIC NET SELECTION TOOL</li> </ul>	<a href="http://www.siemens.com/snst">http://www.siemens.com/snst</a>
<ul style="list-style-type: none"> <li>to website: Industrial communication</li> </ul>	<a href="http://www.siemens.com/simatic-net">http://www.siemens.com/simatic-net</a>
<ul style="list-style-type: none"> <li>to website: Industry Mall</li> </ul>	<a href="https://mall.industry.siemens.com">https://mall.industry.siemens.com</a>
<ul style="list-style-type: none"> <li>to website: Information and Download Center</li> </ul>	<a href="http://www.siemens.com/automation/net/catalog">http://www.siemens.com/automation/net/catalog</a>
<ul style="list-style-type: none"> <li>to website: Image database</li> </ul>	<a href="http://automation.siemens.com/bilddb">http://automation.siemens.com/bilddb</a>
<ul style="list-style-type: none"> <li>to website: CAx Download Manager</li> </ul>	<a href="http://www.siemens.com/cax">http://www.siemens.com/cax</a>
<ul style="list-style-type: none"> <li>to website: Industry Online Support</li> </ul>	<a href="https://support.industry.siemens.com">https://support.industry.siemens.com</a>
<b>last modified:</b>	09.03.2015