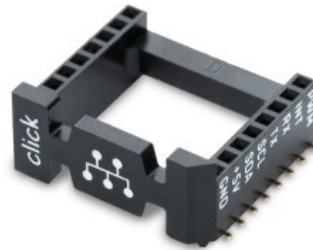


SOCKET mikroBUS 16 SMD



PID: MIKROE-4248

A new design of the [mikroBUS™](#) socket allows even easier interfacing with the [Click board™](#) line of products: it has a sturdier design which helps to align the Click board™ correctly. In addition to added horizontal supports between two 8-pin connectors, the right lower edge is chamfered at the angle of 45°, the same as the Click board™, making it seamlessly fit into the mikroBUS™ socket. The new mikroBUS™ socket is now a fully-fledged, standardized monolithic component with all its pins clearly labeled, offering very good grip for the Click board™, preventing it to flip over or to be placed incorrectly

Mikroe produces entire development toolchains for all major microcontroller architectures.

Committed to excellency, we are dedicated to helping engineers bring the project development up to speed and achieve outstanding results.



ISO 27001: 2013 certification of informational security management system.
 ISO 14001: 2015 certification of environmental management system.
 OHSAS 18001: 2008 certification of occupational health and safety management system.



ISO 9001: 2015 certification of quality management system (QMS).

Downloads

[SOCKET mikroBUS 16 SMD Drawing](#)

[SOCKET mikroBUS 16 SMD Altium libraries](#)

[SOCKET mikroBUS 16 SMD Eagle libraries](#)

Mikroe produces entire development toolchains for all major microcontroller architectures.

Committed to excellency, we are dedicated to helping engineers bring the project development up to speed and achieve outstanding results.



ISO 27001: 2013 certification of informational security management system.
ISO 14001: 2015 certification of environmental management system.
OHSAS 18001: 2008 certification of occupational health and safety management system.



ISO 9001: 2015 certification of quality management system (QMS).