



## Drehschalter

### K1 Metall-Knöpfe

- Robustes Voll-Aluminium Design (RoHS konform)
- Für Rund- und D-Achsen
- Oberfläche glanzeloxiert, kratzfest, elektrisch nicht leitend und in vielen Farben erhältlich
- Kundenspezifische Designs auf Anfrage

Legende:

Ø d = Achsdurchmesser  
L = Achslänge  
P = Frontplattendicke

Sichere Achsbefestigung mittels seitlicher  
Gewindestift-Verbindung

Achs-  
durchmesser

Bestellnummer

Empfohlene Abmessungen für **Drehimpulsgeber**

Ø d

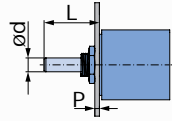
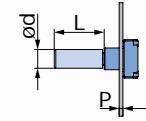
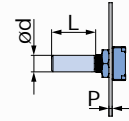
Silber

Schwarz

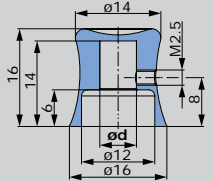
E33  
(mit Gewinde)

E33  
(ohne Gewinde)

E50  
(mit Gewinde)



**Shape**



Gewicht: 3,6g

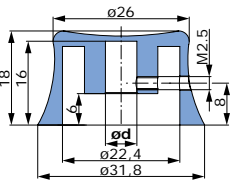
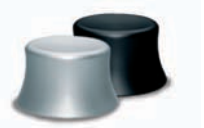
3mm	K1-SH-S30	K1-SH-B30
3,18mm (1/8")	K1-SH-S32	K1-SH-B32
4mm	K1-SH-S40	K1-SH-B40
<b>* 6mm</b>	<b>K1-SH-S60</b>	<b>K1-SH-B60</b>
6,35mm (1/4")	K1-SH-S64	K1-SH-B64

d = 6mm  
L = 7,8mm  
P = Min. 0,8mm  
Max. 3mm

d = 6mm  
L = 7mm  
P = Min. 0,8mm  
Max. 3,5mm  
bei L=7mm  
P<sub>max</sub> = abhängig von L

Einbau nicht möglich

**Shaper**



Gewicht: 14,5g

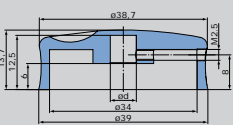
3mm	K1-SR-S30	K1-SR-B30
3,18mm (1/8")	K1-SR-S32	K1-SR-B32
4mm	K1-SR-S40	K1-SR-B40
<b>* 6mm</b>	<b>K1-SR-S60</b>	<b>K1-SR-B60</b>
6,35mm (1/4")	K1-SR-S64	K1-SR-B64

d = 6mm  
L = 7,8mm  
P = Min. 0,8mm  
Max. 3mm

d = 6mm  
L = 7mm  
P = Min. 0,8mm  
Max. 3,5mm  
bei L=7mm  
P<sub>max</sub> = abhängig von L

d = 6mm  
L = 14,3mm  
P = Min. 2mm  
Max. 5mm

**Dimple**



Gewicht: 16,8g

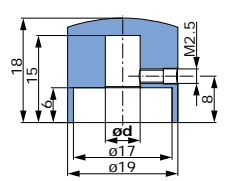
3mm	K1-DM-S30	K1-DM-B30
3,18mm (1/8")	K1-DM-S32	K1-DM-B32
4mm	K1-DM-S40	K1-DM-B40
<b>* 6mm</b>	<b>K1-DM-S60</b>	<b>K1-DM-B60</b>
6,35mm (1/4")	K1-DM-S64	K1-DM-B64

d = 6mm  
L = 7,8mm  
P = Min. 0,8mm  
Max. 3mm

d = 6mm  
L = 7mm  
P = Min. 0,8mm  
Max. 3,5mm  
bei L=7mm  
P<sub>max</sub> = abhängig von L

d = 6mm  
L = 14,3mm  
P = Min. 2mm  
Max. 5mm

**Pure**



Gewicht: 8,9g

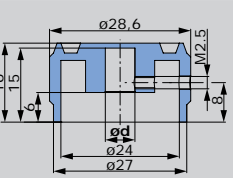
3mm	K1-PR-S30	K1-PR-B30
3,18mm (1/8")	K1-PR-S32	K1-PR-B32
4mm	K1-PR-S40	K1-PR-B40
<b>* 6mm</b>	<b>K1-PR-S60</b>	<b>K1-PR-B60</b>
6,35mm (1/4")	K1-PR-S64	K1-PR-B64

d = 6mm  
L = 7,8mm  
P = Min. 0,8mm  
Max. 3mm

d = 6mm  
L = 7mm  
P = Min. 0,8mm  
Max. 3,5mm  
bei L=7mm  
P<sub>max</sub> = abhängig von L

d = 6mm  
L = 14,3mm  
P = Min. 2mm  
Max. 5mm

**Robot**



Gewicht: 12,2g

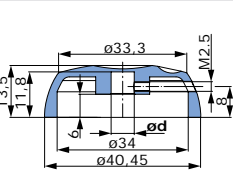
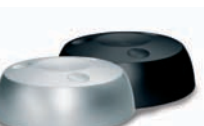
3mm	K1-RB-S30	K1-RB-B30
3,18mm (1/8")	K1-RB-S32	K1-RB-B32
4mm	K1-RB-S40	K1-RB-B40
<b>* 6mm</b>	<b>K1-RB-S60</b>	<b>K1-RB-B60</b>
6,35mm (1/4")	K1-RB-S64	K1-RB-B64

d = 6mm  
L = 7,8mm  
P = Min. 0,8mm  
Max. 3mm

d = 6mm  
L = 7mm  
P = Min. 0,8mm  
Max. 3,5mm  
bei L=7mm  
P<sub>max</sub> = abhängig von L

d = 6mm  
L = 14,3mm  
P = Min. 2mm  
Max. 5mm

**Space**



Gewicht: 15,2g

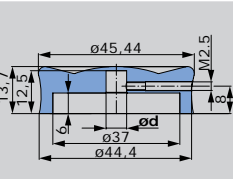
3mm	K1-SC-S30	K1-SC-B30
3,18mm (1/8")	K1-SC-S32	K1-SC-B32
4mm	K1-SC-S40	K1-SC-B40
<b>* 6mm</b>	<b>K1-SC-S60</b>	<b>K1-SC-B60</b>
6,35mm (1/4")	K1-SC-S64	K1-SC-B64

d = 6mm  
L = 7,8mm  
P = Min. 0,8mm  
Max. 3mm

d = 6mm  
L = 7mm  
P = Min. 0,8mm  
Max. 3,5mm  
bei L=7mm  
P<sub>max</sub> = abhängig von L

d = 6mm  
L = 14,3mm  
P = Min. 2mm  
Max. 5mm

**Cone**



Gewicht: 36,2g

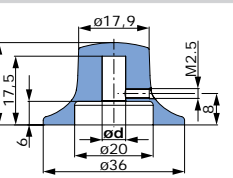
3mm	K1-CN-S30	K1-CN-B30
3,18mm (1/8")	K1-CN-S32	K1-CN-B32
4mm	K1-CN-S40	K1-CN-B40
<b>* 6mm</b>	<b>K1-CN-S60</b>	<b>K1-CN-B60</b>
6,35mm (1/4")	K1-CN-S64	K1-CN-B64

d = 6mm  
L = 7,8mm  
P = Min. 0,8mm  
Max. 3mm

d = 6mm  
L = 7mm  
P = Min. 0,8mm  
Max. 3,5mm  
bei L=7mm  
P<sub>max</sub> = abhängig von L

d = 6mm  
L = 14,3mm  
P = Min. 2mm  
Max. 5mm

**Medic**



Gewicht: 16,8g

3mm	K1-MD-S30	K1-MD-B30
3,18mm (1/8")	K1-MD-S32	K1-MD-B32
4mm	K1-MD-S40	K1-MD-B40
<b>* 6mm</b>	<b>K1-MD-S60</b>	<b>K1-MD-B60</b>
6,35mm (1/4")	K1-MD-S64	K1-MD-B64

d = 6mm  
L = 7,8mm  
P = Min. 0,8mm  
Max. 3mm

d = 6mm  
L = 7mm  
P = Min. 0,8mm  
Max. 3,5mm  
bei L=7mm  
P<sub>max</sub> = abhängig von L

d = 6mm  
L = 14,3mm  
P = Min. 2mm  
Max. 5mm

## Empfohlene Abmessungen für **Codierschalter**

07 (mit Gewinde)	07 (ohne Gewinde)	C07A (mit Gewinde)	C08 (mit Gewinde)	C08 (ohne Gewinde)
d = 3mm L <sub>1</sub> = 11,5mm P <sub>1</sub> = Min. 0,8mm Max. 1,5mm L <sub>2</sub> = 12,8mm P <sub>2</sub> = Min 0,8mm Max 2,5mm	d = 3mm L = 12,8mm P = Min. 0,8mm Max. 3mm bei L=12,8mm P <sub>Max</sub> = abhängig von L	d = 3mm L <sub>1</sub> = 13mm P <sub>1</sub> = Min. 0,8mm Max. 3,5mm L <sub>2</sub> = 13,5mm P <sub>2</sub> = Min 0,8mm Max 4mm	d = 3,18mm L = 15,2mm P = Min. 0,8mm Max. 2,5mm	d = 3,18mm L = 15,2mm P = Min. 0,8mm Max. 5mm
d = 3mm L <sub>1</sub> = 11,5mm P <sub>1</sub> = Min. 0,8mm Max. 1,5mm L <sub>2</sub> = 12,8mm P <sub>2</sub> = Min 0,8mm Max 2,5mm	d = 3mm L = 12,8mm P = Min. 0,8mm Max. 3mm bei L=12,8mm P <sub>Max</sub> = abhängig von L	d = 3mm L <sub>1</sub> = 13mm P <sub>1</sub> = Min. 0,8mm Max. 3,5mm L <sub>2</sub> = 13,5mm P <sub>2</sub> = Min 0,8mm Max 4mm	d = 3,18mm L = 15,2mm P = Min. 0,8mm Max. 2,5mm	d = 3,18mm L = 15,2mm P = Min. 0,8mm Max. 5mm
d = 3mm L <sub>1</sub> = 11,5mm P <sub>1</sub> = Min. 0,8mm Max. 1,5mm L <sub>2</sub> = 12,8mm P <sub>2</sub> = Min 0,8mm Max 2,5mm	d = 3mm L = 12,8mm P = Min. 0,8mm Max. 3mm bei L=12,8mm P <sub>Max</sub> = abhängig von L	d = 3mm L <sub>1</sub> = 13mm P <sub>1</sub> = Min. 0,8mm Max. 3,5mm L <sub>2</sub> = 13,5mm P <sub>2</sub> = Min 0,8mm Max 4mm	d = 3,18mm L = 15,2mm P = Min. 1,5mm Max. 2,5mm	d = 3,18mm L = 15,2mm P = Min. 2mm Max. 5mm
d = 3mm L <sub>1</sub> = 11,5mm P <sub>1</sub> = Min. 0,8mm Max. 1,5mm L <sub>2</sub> = 12,8mm P <sub>2</sub> = Min 0,8mm Max 2,5mm	d = 3mm L = 12,8mm P = Min. 0,8mm Max. 3mm bei L=12,8mm P <sub>Max</sub> = abhängig von L	d = 3mm L <sub>1</sub> = 13mm P <sub>1</sub> = Min. 0,8mm Max. 3,5mm L <sub>2</sub> = 13,5mm P <sub>2</sub> = Min 0,8mm Max 4mm	d = 3,18mm L = 15,2mm P = Min. 0,8mm Max. 2,5mm	d = 3,18mm L = 15,2mm P = Min. 0,8mm Max. 5mm
d = 3mm L <sub>1</sub> = 11,5mm P <sub>1</sub> = Min. 0,8mm Max. 1,5mm L <sub>2</sub> = 12,8mm P <sub>2</sub> = Min 0,8mm Max 2,5mm	d = 3mm L = 12,8mm P = Min. 0,8mm Max. 3mm bei L=12,8mm P <sub>Max</sub> = abhängig von L	d = 3mm L <sub>1</sub> = 13mm P <sub>1</sub> = Min. 0,8mm Max. 3,5mm L <sub>2</sub> = 13,5mm P <sub>2</sub> = Min 0,8mm Max 4mm	d = 3,18mm L = 15,2mm P = Min. 0,8mm Max. 2,5mm	d = 3,18mm L = 15,2mm P = Min. 0,8mm Max. 5mm
d = 3mm L <sub>1</sub> = 11,5mm P <sub>1</sub> = Min. 0,8mm Max. 1,5mm L <sub>2</sub> = 12,8mm P <sub>2</sub> = Min 0,8mm Max 2,5mm	d = 3mm L = 12,8mm P = Min. 0,8mm Max. 3mm bei L=12,8mm P <sub>Max</sub> = abhängig von L	d = 3mm L <sub>1</sub> = 13mm P <sub>1</sub> = Min. 0,8mm Max. 3,5mm L <sub>2</sub> = 13,5mm P <sub>2</sub> = Min 0,8mm Max 4mm	d = 3,18mm L = 15,2mm P = Min. 2,5mm Max. 2,5mm	d = 3,18mm L = 15,2mm P = Min. 2,5mm Max. 5mm
d = 3mm L <sub>1</sub> = 11,5mm P <sub>1</sub> = Min. 0,8mm Max. 1,5mm L <sub>2</sub> = 12,8mm P <sub>2</sub> = Min 0,8mm Max 2,5mm	d = 3mm L = 12,8mm P = Min. 0,8mm Max. 3mm bei L=12,8mm P <sub>Max</sub> = abhängig von L	d = 3mm L <sub>1</sub> = 13mm P <sub>1</sub> = Min. 0,8mm Max. 3,5mm L <sub>2</sub> = 13,5mm P <sub>2</sub> = Min 0,8mm Max 4mm	d = 3,18mm L = 15,2mm P = Min. 1,5mm Max. 2,5mm	d = 3,18mm L = 15,2mm P = Min. 2mm Max. 5mm
d = 3mm L <sub>1</sub> = 11,5mm P <sub>1</sub> = Min. 0,8mm Max. 1,5mm L <sub>2</sub> = 12,8mm P <sub>2</sub> = Min 0,8mm Max 2,5mm	d = 3mm L = 12,8mm P = Min. 0,8mm Max. 3mm bei L=12,8mm P <sub>Max</sub> = abhängig von L	d = 3mm L <sub>1</sub> = 13mm P <sub>1</sub> = Min. 0,8mm Max. 3,5mm L <sub>2</sub> = 13,5mm P <sub>2</sub> = Min 0,8mm Max 4mm	d = 3,18mm L = 15,2mm P = Min. 0,8mm Max. 2,5mm	d = 3,18mm L = 15,2mm P = Min. 0,8mm Max. 5mm



## Standard Farben

Farblos eloxiert „Aluminium-Silber“



Schwarz



## Sonderfarben

Brandrot



Echtgold



Grün



Türkisblau



Hellblau



Dunkelblau



Weitere Farben auf Anfrage erhältlich

## Inhalt Standard-Verpackungs-Einheit

- 20Stk. (Typ: Shaper, Robot, Space, Dimple, Cone, Medic)
- 40Stk. (Typ: Shape oder Pure)
- 1Stk. Gewindestift M2,5x3mm pro Knopf
- 1Stk. Innensechskantschlüssel-Inbus SW 1,3mm



20Stk. für Shaper, Robot, Space, Dimple, Cone, Medic



40Stk. für Shape oder Pure

## Ersatzteile

Bezeichnung	Anzahl	Bestellnummer
Innensechskantschlüssel-Inbus SW 1,3mm	1Stk.	K1-HEXKEY
Gewindestift M2,5x3mm	1Stk.	5404-31

## Zusatzinformation

Gewindestift vorsichtig anziehen, max. Drehmoment 0,3Nm

## Elma - Your Solution Partner für Komplettlösungen

### Elma Gehäuse

Stahl- oder Aluminiumkonstruktion

### Elma Griffe

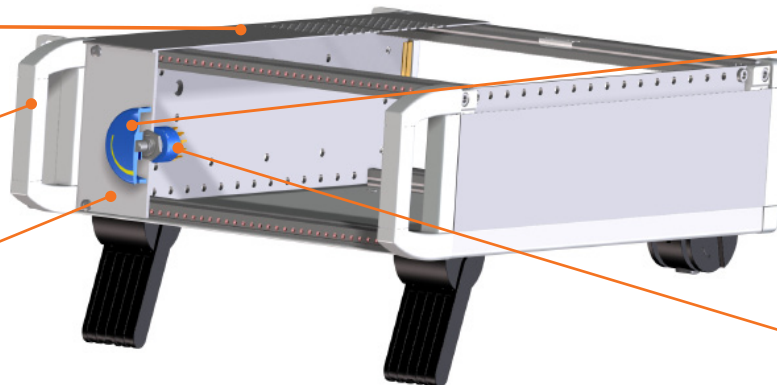
### Elma Frontplatte

### Elma Knöpfe

Metall- und Kunststoffknöpfe

### Elma Drehschalter

Drehimpulsgeber, Codierschalter, Wahlschalter





**ELMA Electronic AG**  
Hofstrasse 93, Postfach  
CH-8620 Wetzikon  
Phone +41 44 933 41 11  
Fax +41 44 933 42 15  
sales@elma.ch



**ELMA Electronic  
France SA**  
ZA du Buisson Rond  
F-38460 Villemotrieu  
Phone +33 4 37 06 21 10  
Fax +33 4 37 06 21 19  
sales@elma-electronic.fr



**ELMA Electronic Inc.**  
44350 Grimmer Blvd.  
Fremont, CA 94538  
Phone +1 510 656 3400  
Fax +1 510 656 3783  
sales@elma.com

**ELMA Bustronic Corp.**  
44350 Grimmer Blvd.  
Fremont, CA 94538  
Phone +1 510 490 7388  
Fax +1 510 490 1853  
sales@elmabustronic.com

**Optima EPS Corp. - an Elma  
Company**  
1775 MacLeod Drive  
Lawrenceville, GA 30043  
Phone +1 770 496 4000  
Fax +1 770 496 4041  
sales@elma.com

**ACT/Technico**  
760 Veterans Circle  
Warminster, PA 18974-3531  
Phone +1 215 956 1200  
Fax +1 215 956 1201  
sales@acttechnico.com



**ELMA Electronic GmbH**  
Stuttgarter Strasse 11  
D-75179 Pforzheim  
Phone +49 7231 97 34 0  
Fax +49 7231 97 34 97  
info@elma.de



**ELMA Electronic  
Israel Ltd.**  
34, Modi'in St.  
Sgula LZ., Petach-Tikva, 49271 IL  
Phone +972 3 930 5025  
Fax +972 3 931 3134  
sales@elma.co.il



**ELMA Electronic UK Limited**  
Solutions House  
Fraser Road, Priory Business Park  
Bedford, MK44 3BF  
Phone +44 1234 838 822  
Fax +44 1234 836 650  
sales@elma-mektron.co.uk



**ELMA Electronic  
Romania SRL**  
Chisoda, DN 59 Km 8 + 550 m  
307221 Judet Timis  
Phone +40 256 306 046  
Fax +40 256 249 820  
info@elma.ro



**ELMA Electronic  
(China) Co., Ltd.**  
8F, 355, Fu Te Road (West 1)  
Wai Gao Qiao Free Trade Zone  
Pudong District  
Shanghai, 200131, China  
Phone +86 21 5866 5908  
Fax +86 21 5866 5918  
sales@elmachina.com



**Elma Asia Pacific Pte Ltd**  
115-A Commonwealth Drive  
#03-14 Tanglin Halt Industrial Estate  
149596 Singapore  
Phone +65 6479 8552  
Fax +65 6479 8662  
sales.elmaap@elma.com

Your local solution partner: