

The comprehensive logistics puzzle for
protecting electronic components and
equipments from electrostatic and
mechanical damage.

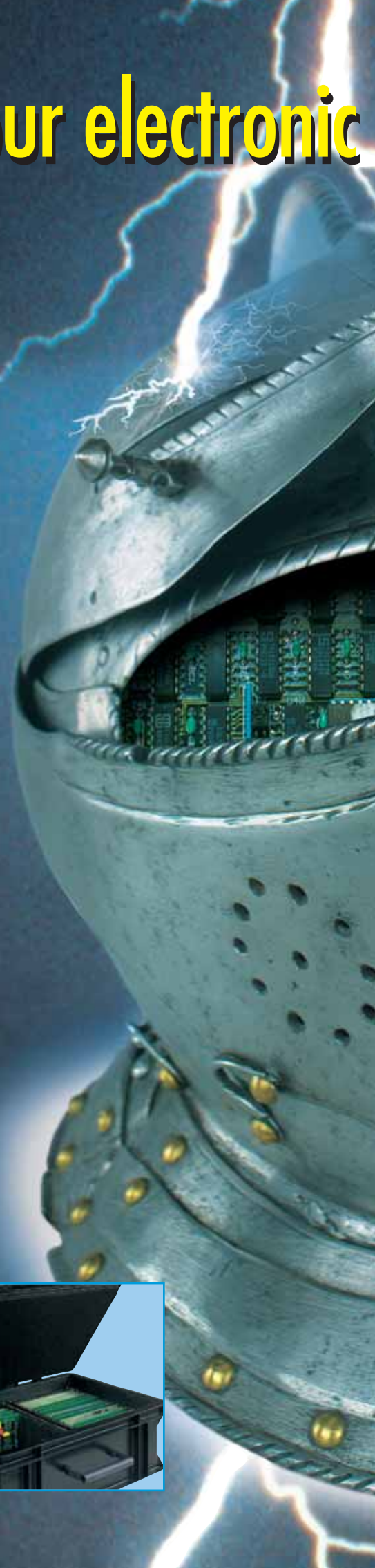
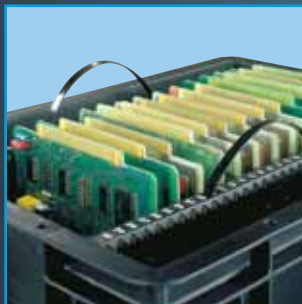
weZ *SUISSE*

BLACKLINE®

The bodyguards for your electronic

The hazard of electrostatic discharge damage to electronic components, modules and units is on the increase. With the increasing complexity (density) of printed circuits, they are becoming more susceptible to this type of damage. Today, voltages as low as 50 V can destroy electrostatic sensitive devices—and the greatest risk comes from manual handling: the human body often carries electrostatic charges in excess of several thousand volts.

The damage caused by electrostatic discharge poses a serious threat to the electronics industry. These days manufacturers have to comply with ISO 9000 quality standards and supply relevant documentary proof. They can also be held accountable for consequential damage resulting from faulty products. The only sensible policy to adopt is one of prevention: wez BlackLine protects your electronic products through all phases of manufacture and logistics.



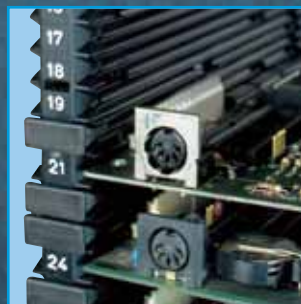
products

BlackLine: double protection against both electrostatic discharge and mechanical damage.

WEZ

The worst enemy of your electronic products is invisible – but not invincible. Our BlackLine products are made of wez 209 R polypropylene which has excellent charge dissipation and a surface resistance $<10^4 \Omega$ (DIN 53482). This material ensures the safe discharge of any build-up of electrostatic charges within an EPA and provides effective shielding in uncontrolled environments. Resistance measurements on our systems show identical readings at all points. **On request: Some products are available in permanent dissipative, colourable ESD material.**

An ingenious range of divider systems and robust, high impact strength construction means that the BlackLine containers will protect your products throughout production, storage and transportation. The consistent high quality of all wez BlackLine products is further assured by our ISO 9001 certified QA system.



Guaranteed protection during production,

BlackLine products have been in service for many years throughout the world. From printed circuit boards and electronic components through to modules, the BlackLine has a cost-effective solution to both mechanical and electrostatic damage for every application. This dual protection both reduces rejects at all stages of production and improves logistics-investment in the BlackLine range will result in a quick pay-back period.



Contents

Page

Standard containers	6
Flat-base containers	7
VISTA storage containers	7
Containers with heavy-duty bases	8

Lids	9
------------	---

Standard carrying cases	10
Carrying case fittings and accessories	11

Printorama® system	12
wez-Rack® system	16

Pocket-Box, PCB holder	22
------------------------------	----

Products for special applications	23
---	----

Insert containers	24
Divider-systems	25
Boxes with lids and small containers	26
Stacking and transport accessories	27
Printing options	27
Labelling systems	28

Operating instruction	
Printorama® system	29
Working instruction	
Printorama® system	30
wez company profile	31

handling and transport



BlackLine: A comprehensive range for today and tomorrow.

The BlackLine range meets all your requirements. It is at the forefront of technical applications and fulfils all the needs of production, handling, storage and shipping operations. By incorporating corporate logos or other printing, your products can be both protected and readily identified. The wide variety of labelling options and accessories ensures that all phases of the logistic and production operations can be monitored and controlled.



Standard containers



BlackLine standard containers are available in 3 sizes: 300 x 200, 400 x 300 and 600 x 400 mm. Stacking heights range from 44 to 400 mm.

The standard BlackLine containers are designed for European pallets, 1200 x 800 / 1200 x 1000 mm and the different container sizes may be stacked together in a wide range of configurations. A rugged and solid construction with minimal internal draft angle ensures maximum space utilisation. Holes in the top frames allow integration with other system components such as lids, Printorama, etc. Shell handles are included on all containers (except 44 mm high). Exact dimensional tolerances ensure that all BlackLine containers retain compatibility, whatever the age of the product. Average stack loads are 500 kg. Both BlackLine and LogiLine containers are fully compatible, a real wez advantage! BlackLine standard containers have the SGL base design.



All containers marked with ESD sign in accordance with IEC 61340-5-1

C



Standard container design, size 300 x 200 mm.



Standard container design, size 400 x 300 mm.



Standard container design, size 600 x 400 mm.

Part No.	External dim. mm	Stacking h. mm	Internal dim. mm	Usable depth	Capacity, litres	Approx weight g
3204.000.992	300 x 200 x 053	44	260 x 160 x 041	31	1.7	290
3208.000.992	300 x 200 x 100	88	260 x 160 x 085	72	3.5	530
3213.000.992	300 x 200 x 145	133	260 x 160 x 130	117	5.4	705
4304.000.992	400 x 300 x 053	44	360 x 260 x 041	31	3.8	625
4308.900.992	400 x 300 x 100	88	360 x 260 x 085	72	8.0	960
4313.900.992	400 x 300 x 145	133	360 x 260 x 130	117	12.1	1130
4320.000.992	400 x 300 x 212	200	360 x 260 x 197	184	18.5	1535
4326.000.992	400 x 300 x 278	266	360 x 260 x 262	249	24.5	1890
4332.000.992	400 x 300 x 320	308	360 x 260 x 304	291	28	2000
6404.617.992	600 x 400 x 056	44	560 x 360 x 041	28	8.25	1080
6408.000.992	600 x 400 x 100	88	560 x 360 x 085	72	17.0	1790
6413.000.992	600 x 400 x 145	133	560 x 360 x 129	116	26.0	2100
6420.000.992	600 x 400 x 212	200	560 x 360 x 196	183	39.0	2635
6426.000.992	600 x 400 x 278	266	560 x 360 x 262	249	52.8	3100
6432.000.992	600 x 400 x 320	308	560 x 360 x 304	291	60	3400
6440.000.992	600 x 400 x 412	400	560 x 360 x 396	383	80.0	4660

Flat-base containers



wez BlackLine flat-base containers are available in 4 sizes: 200 x 150, 300 x 200, 400 x 300 and 600 x 400 mm. Stacking heights range from 44 to 400 mm.

wez BlackLine flat-base containers are ideal to ensure smooth transportation on conveyor belts, roller tracks or ball tables, etc. and for BlackLine cases. Flat-base containers can be stacked in the normal manner (except over 2 of the next smaller size) and they have the same features as our standard containers (see page 6).



All containers marked with ESD sign in accordance with IEC 61340-5-1

C

Part No.	External dim. mm	Stacking h. mm	Internal dim. mm	Usable depth	Capacity, litres	Approx weight g
2108.007.992	200 x 150 x 100	88	155 x 106 x 096	84	1.6	240
2113.007.992	200 x 150 x 145	133	155 x 106 x 142	129	2.7	375
3208.007.992	300 x 200 x 100	88	254 x 154 x 096	83	3.75	520
3213.007.992	300 x 200 x 145	133	254 x 154 x 141	128	5.5	720
4304.007.992	400 x 300 x 053	44	354 x 254 x 049	40	4.4	540
4308.907.992	400 x 300 x 100	88	354 x 254 x 096	83	8.7	1030
4313.907.992	400 x 300 x 145	133	354 x 254 x 141	128	12.8	1200
4313.097.992	400 x 300 x 145	133	354 x 254 x 141	128	12.8	Light-Version 815
4320.007.992	400 x 300 x 212	200	354 x 254 x 208	195	19.2	1610
4326.007.992	400 x 300 x 278	266	354 x 254 x 274	261	25.2	1975
4332.007.992	400 x 300 x 320	308	354 x 254 x 316	303	29.0	2100
6408.007.992	600 x 400 x 100	88	554 x 354 x 096	83	19.0	1650
6413.007.992	600 x 400 x 145	133	554 x 354 x 141	128	28.0	2050
6413.097.992	600 x 400 x 145	133	554 x 354 x 141	128	28.0	Light-Version 1210
6420.007.992	600 x 400 x 212	200	554 x 354 x 208	195	41.0	2550
6426.007.992	600 x 400 x 278	266	554 x 354 x 273	260	55.0	3070
6432.007.992	600 x 400 x 320	308	554 x 354 x 316	303	62.0	3400
6440.007.992	600 x 400 x 412	400	554 x 354 x 407	393	82.0	4605

VISTA storage containers



BlackLine VISTA containers are available in 3 sizes and are fully compatible with all wez standard containers. They feature an inspection / handling opening on the front, optional transparent or conductive panels and a rugged

suspension system, capable of taking up to 25 kg. Reinforced ribbed base offers high loading capabilities with perfect movement on roller systems. Suspension racks are also available in either bench or trolley versions.

Part No.	Description	Ext. dim. mm	Int. dim. mm
2113.550.992	VISTA storage containers	200 x 150 x 145	155 x 135 x 130
3213.550.992	VISTA storage containers	300 x 200 x 145	255 x 180 x 130
4313.550.992	VISTA storage containers	400 x 300 x 145	355 x 260 x 130
9980.059.000	Front panel F32/21, transparent	120 x 065	
9980.060.000	Front panel F43, transparent	180 x 065	
9980.073.000	VISTA labels, per 100	025 x 080	

Containers with heavy-duty bases

Availability on request only!



Reinforced base 004 for container 400 x 300 mm. Base ribs 12 mm high. For weights up to approx. 35 kg.



Reinforced base 613 for container 600 x 400 mm. Base ribs 15 mm high. For weights up to approx. 35 kg.



Heavy-duty base 607 for container 600 x 400 mm. Base ribs 17 mm high with central gap. For weights up to approx. 50 kg.



Heavy-duty base 626 and 611 for container 600 x 400 mm. Base ribs 15/18.5 mm high. For weights up to approx. 50–60 kg.

wez containers with heavy-duty bases are indispensable where minimum base deflection is required; ideal for high bay warehouses. The rugged honeycomb base is contained within the standard stacking profile to ensure low noise emission on conveyors.



Typical use for heavy-duty-base containers in a high bay warehouse, where minimal base deflection is essential.

Part No.	Ext. dim. mm	Int. dim. mm	Rib height mm	Approx. load kg
4313.004.992	400 x 300 x 145	360 x 260 x 130	12	35
4320.004.992	400 x 300 x 212	360 x 260 x 196	12	35
4326.004.992	400 x 300 x 278	360 x 260 x 262	12	35
6413.613.992	600 x 400 x 148	560 x 360 x 130	15	35
6413.607.992	600 x 400 x 150	560 x 360 x 130	17	50
6413.626.992	600 x 400 x 148	560 x 360 x 130	15	50
6413.611.992	600 x 400 x 152	560 x 360 x 130	18.5	60
6420.626.992	600 x 400 x 215	560 x 360 x 196	15	50
6426.613.992	600 x 400 x 281	560 x 360 x 262	15	35
6426.607.992	600 x 400 x 283	560 x 360 x 262	17	50
6426.626.992	600 x 400 x 282	560 x 360 x 262	15	50
6426.611.992	600 x 400 x 285	560 x 360 x 262	18.5	60
6432.626.992	600 x 400 x 323	560 x 360 x 304	15	50
6432.611.992	600 x 400 x 326	560 x 360 x 304	18.5	60
6440.626.992	600 x 400 x 415	560 x 360 x 396	15	50

Lids



Loose lid without fasteners, 3 sizes.
Code: 000



Lid with 4 swing latches for simple, secure fixing to container, 3 sizes. Code: 044



Hinged lid with 2 swing latches. Plug-in hinges, which may be removed with the lid open. 3 sizes.
Code: 032



Hinged lid with integral document holder. A4 size, ideal for operating manuals, product literature, etc. 400 x 300 size only.

BlackLine lids for all BlackLine containers, in three sizes and three different versions. Containers will stack even when the lids are fitted.



All lids marked with ESD sign in accordance with IEC 61340-5-1

C



Plug-in hinge, cannot be removed with lid closed.



Swing latches (pair), for reliable lid closure. Easily retrofitted to 000 version lid.



Lid seal to prevent unauthorised opening of swing latches. Ensures 100% product security.

Part No.	Size mm	Item / option
3200.000.992	300 x 200	Lid, loose
4300.000.992	400 x 300	
6400.000.992	600 x 400	
3200.032.992	300 x 200	Hinged lid with 2 swing latches
4300.032.992	400 x 300	
6400.032.992	600 x 400	
3200.044.992	300 x 200	Lid with 4 swing latches
4300.044.992	400 x 300	
6400.044.992	600 x 400	
4300.932.992	400 x 300	Lid with integral A4 document holder
6400.932.992	600 x 400	
9980.011.992		Lid hinge
9980.012.994		Swing latches (pair)
9980.141.000		Lid seal, per 100

Standard carrying cases



wez BlackLine carrying cases are ideal for product packaging and presentation as well as field service and repairs, etc. Standard version with flat base, comfortable handle and hinged lid. 3 standard sizes, in a range of heights.



Customised interior e.g. with pre-perforated foam interior blocks to suit your product. (See page 11 for details.)



Customised interior e.g. with Printorama® Secondo for safe transport of modules of every size. (See pages 12–15 for details.)



Customised e.g. with product-specific vacuum-formed insert, as sales or presentation package. Ask for details.

Part No.	External dim. mm	Internal dim. mm	
3204.390.992	300 x 200 x 063	260 x 160 x 039	
3208.397.992	300 x 200 x 110	254 x 154 x 095	
3213.397.992	300 x 200 x 154	254 x 154 x 139	
4304.397.992	400 x 300 x 063	354 x 254 x 048	
4308.397.992	400 x 300 x 110	354 x 254 x 095	
4313.397.992	400 x 300 x 154	354 x 254 x 139	
4313.387.992	400 x 300 x 154	354 x 254 x 139	Light-Version
4320.397.992	400 x 300 x 221	354 x 254 x 206	
4326.397.992	400 x 300 x 287	354 x 254 x 272	
6408.397.992	600 x 400 x 111	554 x 354 x 095	
6413.397.992	600 x 400 x 155	554 x 354 x 139	
6420.397.992	600 x 400 x 221	554 x 354 x 206	
6426.397.992	600 x 400 x 288	554 x 354 x 272	

Carrying case fittings and accessories

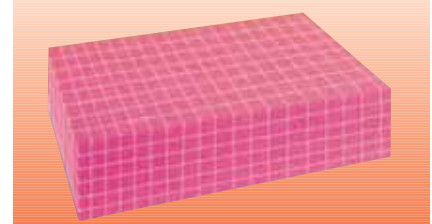
Useful accessories, practical additions for customising your BlackLine carrying case.



Case with reinforced lid and lock to protect your valuable products from unauthorised access. Various sizes to order.



Profiled foam insert for wez lid sizes 600 x 400 and 400 x 300 mm. Standard quality available from stock: pink ESD. Ask about other materials and sizes.



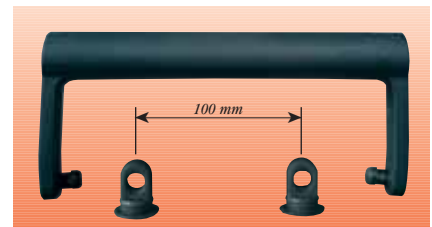
Pre-perforated antistatic pink foam blocks for customised shaping to your requirements. Max thickness 85 mm. Two sizes for either 600 x 400 and 400 x 300 mm containers.



Foam inserts in various sizes and materials. Standard sizes to fit 600 x 400 and 400 x 300 mm containers. Standard material is PUR conductive foam, 6 and 15 mm thick. Other sizes and materials on request.



Lid seal to prevent unauthorised opening of swing latches. Ensures 100% product protection.



Case handle 95 for mounting on BlackLine containers. Simply drill 2 10 mm holes, as shown in the instructions, fit mountings from the inside and clip in handle 95—and it's finished!

Part No.	Description	Size mm
OPTION	Reinforced lid with lock	600 x 400 / 400 x 300
2535.030.992	Profiled foam insert 1:1, pink, ESD foam, loose	252 x 352 x 30
2535.031.992	Profiled foam insert 1:1, pink, ESD foam, glued-in	252 x 352 x 30
3555.030.992	Profiled foam insert 1:1, pink, ESD foam, loose	352 x 552 x 30
3555.031.992	Profiled foam insert 1:1, pink, ESD foam, glued-in	352 x 552 x 30
2636.085.992	Pre-perforated antistatic pink foam block for 4308	260 x 360 x 85
3656.085.992	Pre-perforated antistatic pink foam block for 6408	360 x 560 x 85
2636.006.000	PUR foam insert, loose	258 x 358 x 06
2636.006.001	PUR foam insert, glued-in	258 x 358 x 06
3656.006.000	PUR foam insert, loose	358 x 558 x 06
3656.006.001	PUR foam insert, glued-in	358 x 558 x 06
2636.015.000	PUR foam insert, loose	258 x 358 x 15
2636.015.001	PUR foam insert, glued-in	258 x 358 x 15
3656.015.000	PUR foam insert, loose	358 x 558 x 15
3656.015.001	PUR foam insert, glued-in	358 x 558 x 15
9980.141.000	Lid seal, per 100	Translucent
63.9980.128.000	Case handle 95, loose	Black, conductive
63.9980.129.000	Mounting for handle 95	Black, conductive
63.9980.828.000	Case handle 95, mounted	Black, conductive

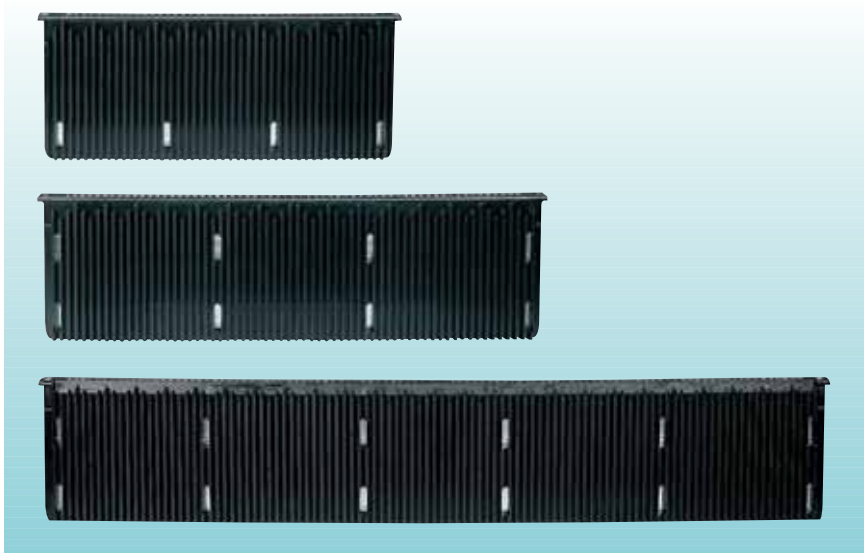
Printorama® system



Printorama / Double Printorama.



Printorama Secondo 400x300 / 600x400.



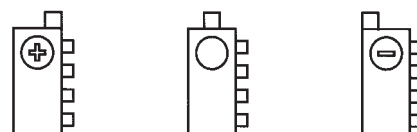
At a glance:

The versatile wez Printorama frame system is an invaluable aid in the production, storage and transportation of PCB's. The range includes the following basic modules:

- Printorama
- Double Printorama
- Printorama Secondo 400 x 300
- Printorama Secondo 600 x 400

Designed to hold your PCB's safely: Slot-in partitions for the Printorama system, lateral and longitudinal, in 3 lengths (300 / 400 / 600 mm).

Partitions have edge sections in different locations (⊕ ⊙ ⊖) to give a minimum division pitch of 1.7 mm (see page 15 for details).



The wez Printorama instruction sheets (pages 29+30) show how to set up the system with the correct partitions and locations.



Printorama frames can be attached with either metal U-clips or Nylatch fasteners.



Printorama® system



4314.100

The Printorama® for the BlackLine 400 x 300 mm containers, internal depth 88 mm upwards. PCB's up to 335 mm wide can be accommodated. Slot length = 100 mm, frame height above container = 44 mm.

Slot geometry: Width = 2.5 mm
Depth = 3.0 mm
Slot pitch = 5.08 mm



6414.100

The Double Printorama® for the BlackLine 600 x 400 mm containers, internal depth 88 mm upwards. PCB's up to 535 mm wide can be accommodated. Slot length = 100 mm, frame height above container = 44 mm.

Slot geometry: Width = 2.5 mm
Depth = 3.0 mm
Slot pitch = 5.08 mm



6414.140*

Double Printorama® Robotic
Same as Double Printorama® 6414.100

Slot geometry: Width = 3.5 mm on 400 mm sides
2.5 mm on 600 mm sides
Depth = 3.0 mm
Slot pitch = 5.08 mm on 600 mm sides
15.24 mm on 400 mm sides

For divider systems, see page 15

Part No.	Description	Option	Dimensions mm	
4314.100.992	Printorama, P = 5.08 mm	Loose	External	400 x 300 x 140
4314.114.992		Mounted with 4 Nylatches	Internal	335 x 235 x 140
4314.128.992		Mounted with 8 U-clips		
6414.100.992	Double Printorama, P = 5.08 mm	Loose	External	600 x 400 x 140
6414.114.992		Mounted with 4 Nylatches	Internal	535 x 335 x 140
6414.120.992		Mounted with 10 U-clips		
6414.140.992*	Double Printorama 400 mm sides, P = 15.24 mm	Loose	External	600 x 400 x 140
6414.144.992*		Mounted with 4 Nylatches	Internal	535 x 335 x 140
6414.148.992*		Mounted with 10 U-clips		

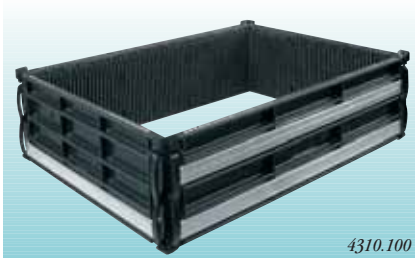
*Availability on request only.

Printorama® system

The Printorama Secondo is a highly flexible modular frame system. The Secondo frame consists of 4 Printorama partitions (minus

pitch) plus 4 Secondo corners. Always use in conjunction with the BlackLine containers.

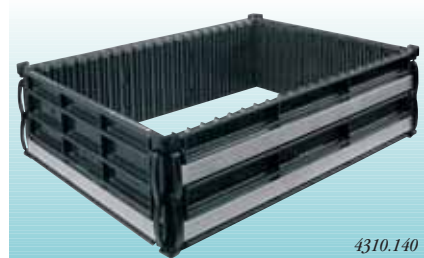
For divider systems, see page 15



4310.100



4310.130



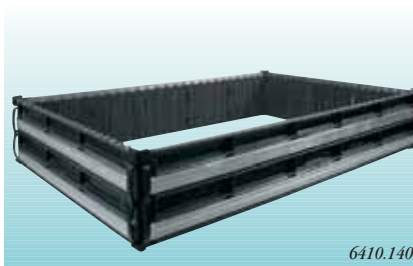
4310.140

Printorama Secondo® 400 x 300 mm, for the BlackLine containers of the same size, internal depth 133 mm upwards. For PCB's up to 335 mm wide with slot length 100 mm, available in 3 versions.

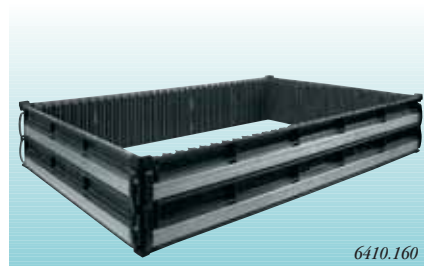
		4310.100	4310.130	4310.140
Slot width	400 mm side	2.5 mm	2.5 mm	3.5 mm
	300 mm side	2.5 mm	3.5 mm	2.5 mm
Slot depth		3.0 mm	3.0 mm	3.0 mm
Slot pitch	400 mm side	5.08 mm	5.08 mm	15.24 mm
	300 mm side	5.08 mm	15.24 mm	5.08 mm



6410.100



6410.140



6410.160

Printorama Secondo® 600 x 400 mm, for the BlackLine containers of the same size, internal depth 133 mm upwards. For PCB's up to 535 mm wide with slot length 100 mm, available in 3 versions.

		6410.100	6410.140	6410.160
Slot width	600 mm side	2.5 mm	2.5 mm	3.5 mm
	400 mm side	2.5 mm	3.5 mm	2.5 mm
Slot depth		3.0 mm	3.0 mm	3.0 mm
Slot pitch	600 mm side	5.08 mm	5.08 mm	15.24 mm
	400 mm side	5.08 mm	15.24 mm	5.08 mm



For transporting large PCB's safely

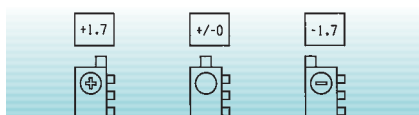
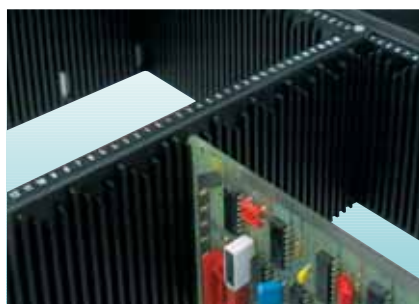
Long slots are imperative for large PCB's. For combining 2 or more Secondos or Secondo with Printorama, the slot length can be extended at will, or positioned wherever required within a BlackLine container.



Secondo-FIX is used to lock linking walls firmly in place.

Part No.	Description	Options	Dimensions mm
4310.100.992	Printorama Secondo 400 x 300 mm	All sides P = 5.08 mm	Internal 335 x 235 x 98 mm
4310.130.992		300 mm sides P = 15.24 mm	
4310.140.992		400 mm sides P = 15.24 mm	
6410.100.992	Printorama Secondo 600 x 400 mm	All sides P = 5.08 mm	Internal 535 x 335 x 98 mm
6410.140.992		400 mm sides P = 15.24 mm	
6410.160.992		600 mm sides P = 15.24 mm	
9980.035.000	Secondo corner	Unmounted	17 x 17 x 105 mm
9980.054.994	Secondo FIX (pair)	Pack of ten	

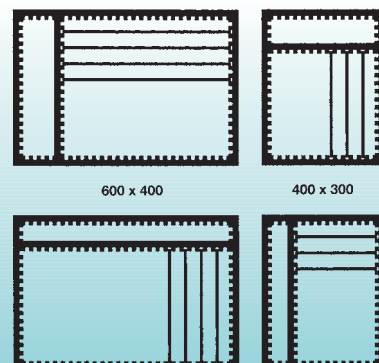
Printorama® system



Partition system

With 300, 400 and 600 mm partitions, all Printorama frame systems can be divided both laterally and longitudinally. These sturdy aluminium-reinforced partitions ensure the maximum stability required for transport applications. No tools are required to alter individual PCB dimensions and the frames do not have to be removed from the BlackLine container.

Partitions have edge sections at different positions to give minimum pitch adjustment of 1.7 mm.



Standard division $P = 5.08 \text{ mm}$
 Slot width = 2.5 mm
 Slot depth = 3.0 mm
 Available for all lengths of partitions
 (300, 400 and 600 mm)



Robotic division $P = 15.24 \text{ mm}$
 Slot width = 3.5 mm
 Slot depth = 3.0 mm
 Available for all lengths of partitions
 (300, 400 and 600 mm)



Special division $P = 19.05 \text{ mm}^*$
 Slot width = 2.5 mm
 Slot depth = 3.0 mm
 Available on 400 mm long partitions to order.



Special division $P = 25.4 \text{ mm}^*$
 Slot width = 3.5 mm
 Slot depth = 3.0 mm
 Available on 400 mm long partitions to order.

Part No.	Description	Option	Dimensions mm
2310.100.992	Partition 300 mm	$P = 5.08 \text{ mm}$ normal distance	235 x 100 x 10 mm
2310.110.992		$P = 5.08 \text{ mm}$ plus distance	Slot width: 2.5 mm
2310.120.992		$P = 5.08 \text{ mm}$ minus distance	Slot depth: 3.0 mm
2310.200.992		$P = 15.24 \text{ mm}$ normal distance	235 x 100 x 10 mm
2310.210.992		$P = 15.24 \text{ mm}$ plus distance	Slot width: 3.5 mm
2310.220.992		$P = 15.24 \text{ mm}$ minus distance	Slot depth: 3.0 mm
3310.100.992	Partition 400 mm	$P = 5.08 \text{ mm}$ normal distance	335 x 100 x 10 mm
3310.110.992		$P = 5.08 \text{ mm}$ plus distance	Slot width: 2.5 mm
3310.120.992		$P = 5.08 \text{ mm}$ minus distance	Slot depth: 3.0 mm
3310.200.992		$P = 15.24 \text{ mm}$ normal distance	335 x 100 x 10 mm
3310.210.992		$P = 15.24 \text{ mm}$ plus distance	Slot width: 3.5 mm
3310.220.992		$P = 15.24 \text{ mm}$ minus distance	Slot depth: 3.0 mm
3310.300.992*		$P = 25.4 \text{ mm}$ normal distance	335 x 100 x 10 mm
3310.310.992*		$P = 25.4 \text{ mm}$ plus distance	Slot width: 3.5 mm
3310.320.992*		$P = 25.4 \text{ mm}$ minus distance	Slot depth: 3.0 mm
3310.400.992*		$P = 19.05 \text{ mm}$ normal distance	335 x 100 x 10 mm
3310.410.992*	$P = 19.05 \text{ mm}$ plus distance	Slot width: 2.5 mm	
3310.420.992*	$P = 19.05 \text{ mm}$ minus distance	Slot depth: 3.0 mm	
5310.100.992	Partition 600 mm	$P = 5.08 \text{ mm}$ normal distance	535 x 100 x 10 mm
5310.110.992		$P = 5.08 \text{ mm}$ plus distance	Slot width: 2.5 mm
5310.120.992		$P = 5.08 \text{ mm}$ minus distance	Slot depth: 3.0 mm
5310.200.992		$P = 15.24 \text{ mm}$ normal distance	535 x 100 x 10 mm
5310.210.992		$P = 15.24 \text{ mm}$ plus distance	Slot width: 3.5 mm
5310.220.992		$P = 15.24 \text{ mm}$ minus distance	Slot depth: 3.0 mm

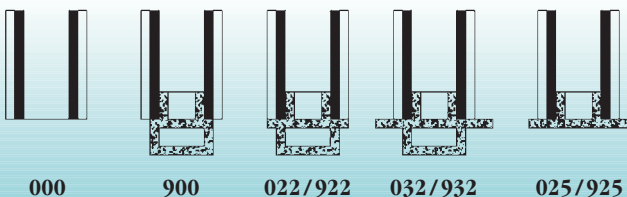
*Availability on request only.

wezRack® system



wezRack 180 series

The simplest and safest system for PCB handling during production, storage and transportation. The modular system fits the BlackLine containers. A practical system which can be customised for countless applications with unlimited variations.



Open or closed slots?

The 180 mm series wezRack can be supplied with through or closed end slots.

000/900 version = open slot, boards may slide through the PCB
 022/922 version = 22 mm slot stop, 2.5 mm stop height
 032/932 version = 32 mm slot stop, 7.5 mm stop height
 025/925 version = 25 mm slot stop, 4.0 mm stop height

Available on:

Rackwall 300 / 400 / 600
 Rackwall 300 / 400
 Rackwall 400
 Rackwall 600

wezRack® system



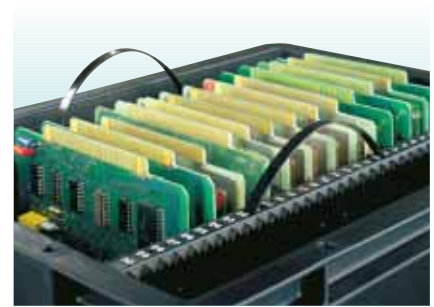
Holds PCB's safely

Slots on both sides of wall with chamfered leads for easy PCB insertion. Ideal for automated handling too. Clip in slot stops, protect against incorrect PCB insertion.



Fast and easy fitting

The wezRack system with unlimited width adjustment to suit any board size. Easy setting by inserting a PCB in the setting slots at each end of the walls. Press the walls together and lock with the two screws. PCB's may now be easily inserted in the numbered grooves which are 0.25 mm deeper.



Handling

Easily fitted flexible handle for simple movement and lifting from containers.



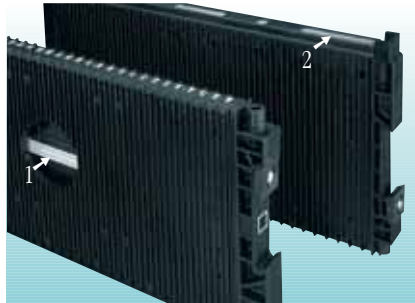
Better protection

15 mm standoff for connectors and other projecting parts on the PCB.



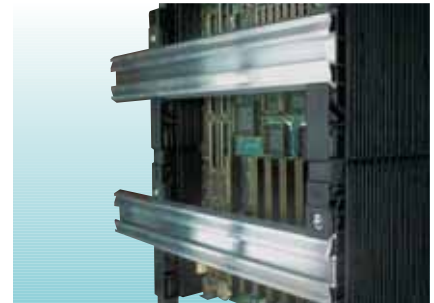
Where can you put documents?

Label clips for holding documents at various locations. Labels may also be inserted in the profile rail.



Stable and non-flexing

For heavy PCB's and operating temperatures up to 40 °C and higher, use our aluminium reinforcing components: tubes in the centre (1) and bars at the ends (2).



Large PCB's need long slots

wezRacks are also available in a double-height version with 345 mm slot length.

wezRack® system



wezRack wall 300:

Number of slots 20
 Slot width/depth 3.5 / 2.5 mm
 Slot pitch 10.16 mm

Options	Part No.	Version
Single wall 300: 255 x 180 x 22 mm		
	2518.000.992	without slot stop
	2518.022.992	with slot stop 322
	2518.900.992	Al-reinforced without slot stop
	2518.922.992	with slot stop 322 + Al-reinf.
Double height wall 300: 255 x 345 x 22 mm		
	2534.000.992	without slot stop
	2534.022.992	with slot stop 322
	2534.900.992	Al-reinforced without slot stop
	2534.922.992	with slot stop 322 + Al-reinf.



wezRack wall 400:

Number of slots 30
 Slot width/depth 3.5 / 2.5 mm
 Slot pitch 10.16 mm

Options	Part No.	Version
Single wall 400: 355 x 180 x 22/32 mm		
	3518.000.992	without slot stop
	3518.022.992	with slot stop 422
	3518.032.992	with slot stop 432
	3518.900.992	Al-reinforced without slot stop
	3518.922.992	with slot stop 422 + Al-reinf.
	3518.932.992	with slot stop 432 + Al-reinf.
Double height wall 400: 355 x 345 x 22/32 mm		
	3535.000.992	without slot stop
	3535.022.992	with slot stop 422
	3535.032.992	with slot stop 432
	3535.900.992	Al-reinforced without slot stop
	3535.922.992	with slot stop 422 + Al-reinf.
	3535.932.992	with slot stop 432 + Al-reinf.

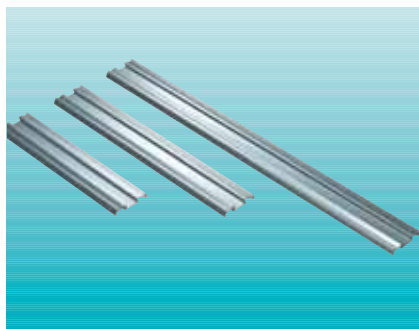


wezRack wall 600:

Number of slots 49
 Slot width/depth 3.5 / 2.5 mm
 Slot pitch 10.16 mm

Options	Part No.	Version
Single wall 600: 555 x 180 x 22/25 mm		
	5518.000.992	without slot stop
	5518.025.992	with slot stop 625
Double height wall 600: 555 x 345 x 22/25 mm		
	5535.000.992	without slot stop
	5535.025.992	with slot stop 625
	5535.900.992	Al-reinforced without slot stop
	5535.925.992	with slot stop 625 + Al-reinf.

wezRack® system

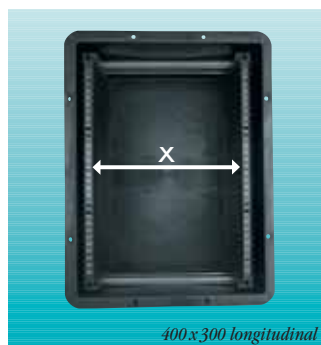


Aluminium rack profile rails for 180 series walls, standard lengths are available to suit BlackLine containers or can be cut to length.

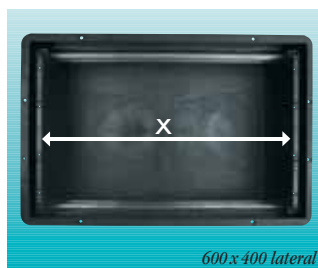
Part No.	Length
9980.074.000	Individual length in mm
9980.074.256	256 mm
9980.074.356	356 mm
9980.074.556	556 mm
9980.075.345	345 cm



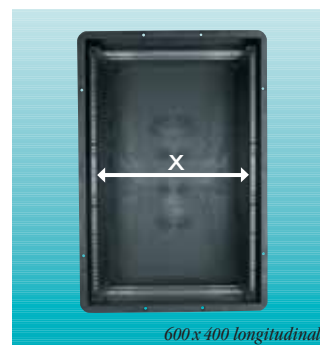
400x300 lateral



400x300 longitudinal

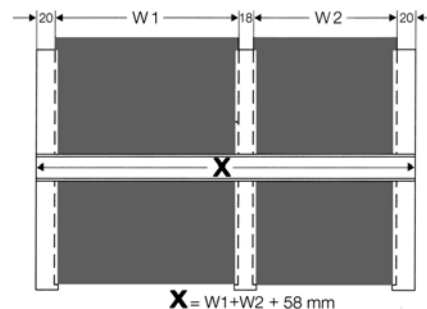


600x400 lateral



600x400 longitudinal

Container size, rack orientation	wezRack wall type	Al profile rail length	Max. width of PCB	No. of slots
400x300 lateral	2518/2534	356 mm	x = 320 mm	20
400x300 longitudinal	3518/3535	256 mm	x = 220 mm	30
600x400 lateral	3518/3535	556 mm	x = 520 mm	30
600x400 longitudinal	5518/5535	356 mm	x = 320 mm	49



Specifying profile rail lengths:

The profile rail length (Dim X) is calculated from the above data.

W = PCB sizes (mm),

X = Profile rail length (mm)

wezRack-version VFA



The wezRack rack adapter / plug-in element allows even faster adjustment between different PCB sizes. Mount 600 mm wezRack partitions at each end of the profile rails and fix rack adapters at the required positions. The plug-in elements (slotted partitions 500/525 mm) may be quickly moved from one rack adapter position to another. The system suits the BlackLine container size 600 x 400 mm.

Part No.	Description	Options
5018.000.992*	Slotted partition 500 (plug-in element)	without slot stop
5018.025.992*	Slotted partition 525 (plug-in element)	with slot stop 625
9980.090.994*	Rack adapter	180 x 22 x 20 mm
9980.074.356	Profile rail	356 mm

*Availability on request only.

wezRack® system



The wezRack trolley: a mobile PCB store.
Open on both sides, each side can accept either:
3 levels of wezRack 400 systems, or
2 levels of wezRack 500/600 systems.

Each level/wezRack may be removed quickly and easily without tools. ESD-compatible with conductive castors.

Order separately:

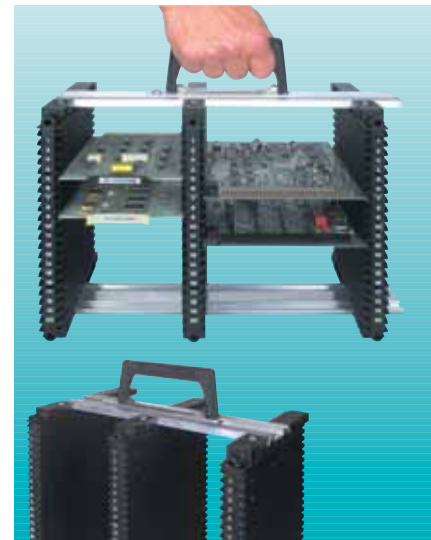
Clamping bar, adjustable (upper mounting for wezRack)

Rack profile rails (2 per level/wezRack)

Length 810 mm

wezRack partitions, 400, 500 or 600 types, as required.

Clamping bar, fixed (lower mounting for wezRack)



wezRack - Carrying Handle

Part No. 9980.162.000

Part No.	Description	Dimensions mm
8161.166.000	wezRack trolley	875 x 615 x 1627
9980.108.000	Clamping bar, fixed	16 x 869
9980.104.000	Clamping bar, adjustable	16 x 869
9980.074.810	wezRack profile rail	Length 810



Slot clip

for closing off slots

Order quantity: pack of 100

Part No. 9980.076.000



Label

fits in profile rail

Order quantity: pack of 80

Part No. 9980.078.000



Handle for wezRack 180
easily fitted and retrofitted

Part No.

Loose (each) 9980.077.000

Fitted (each) 9980.977.000



Label clip

(including 2 screws)

Part No.

Loose (each) 9980.079.000

Fitted (each) 9980.979.000

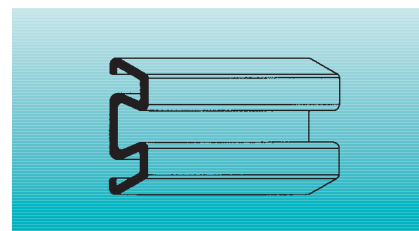
wezRack® system



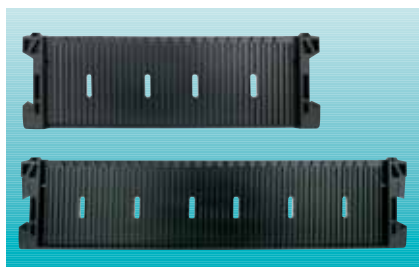
The wezRack 100 series

A sturdy, non-flexing slotted partition 100 mm high. Single-sided wall with chamfered insertion slots. Clip-on stops for closing off slots. Completely adjustable using aluminium profile rails. Fast and easy setting using the slots at each end of the partitions.

Label clip is the same as for the 180 series (see page 20).



Rack profile rail in standard or customised length.



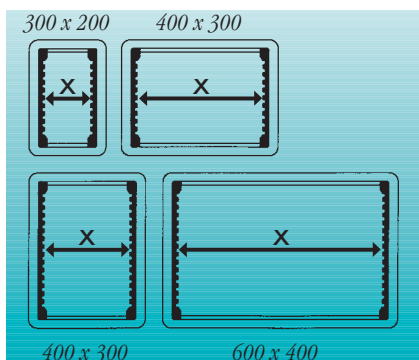
Slotted partitions 1-300 / 1-400

Modular construction, suits BlackLine containers

No. of slots:	1-300 = 20
	1-400 = 30
Slot width:	3.5 mm
Slot depth:	2.5 mm
Slot pitch:	10.16 mm



Slot clip for closing off slots.



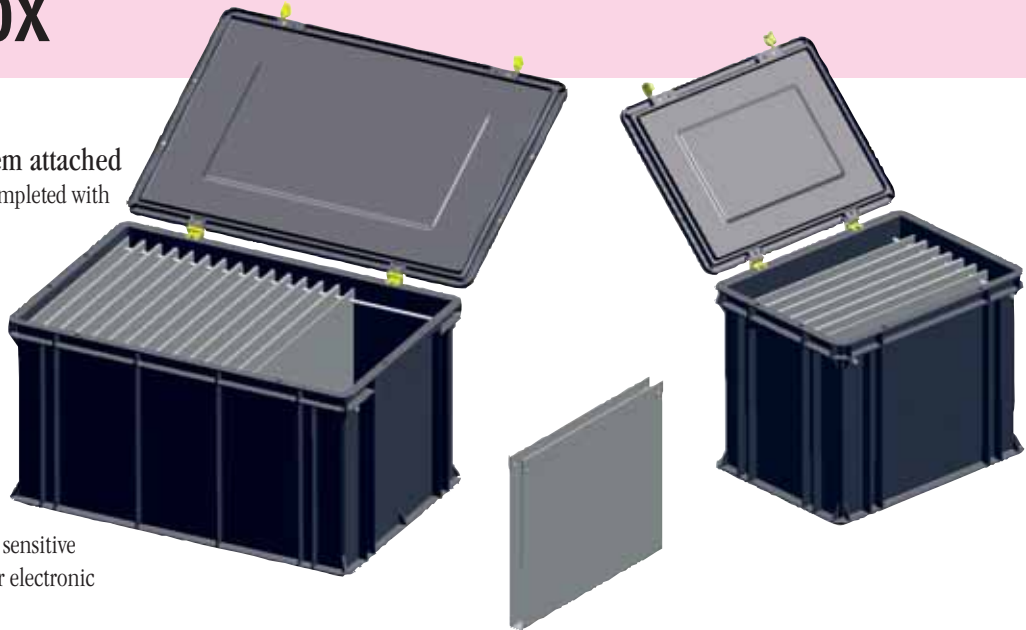
Suitable wezRack 100 systems for BlackLine containers

Container size, rack orientation	Slotted partition type	Al profile rail length	Max. width PCB	No. of slots
300x200 longitudinal	1-300	156 mm	x = 135 mm	20
400x300 lateral	1-300	356 mm	x = 335 mm	20
400x300 longitudinal	1-400	256 mm	x = 235 mm	30
600x400 lateral	1-400	556 mm	x = 535 mm	30

Part No.	Description	Dimensions mm
2510.000.992	Pair of slotted partitions 1-300	255 x 80 x 13.5
3510.000.992	Pair of slotted partitions 1-400	355 x 80 x 13.5
9980.149.156	Rack profile rail 1-156	Length = 156
9980.149.256	Rack profile rail 1-256	Length = 256
9980.149.356	Rack profile rail 1-356	Length = 356
9980.149.556	Rack profile rail 1-556	Length = 556
9980.149.000	Rack profile rail 1-XXX	Specify length in mm
9980.150.345	Rack profile rail 1-345	Length = 3450
9980.152.000	Slot clip 100	

Pocket-Box

ESD-Box with pocket-system attached
 Made of conductive PP, black. Completed with pockets and hinged lid.

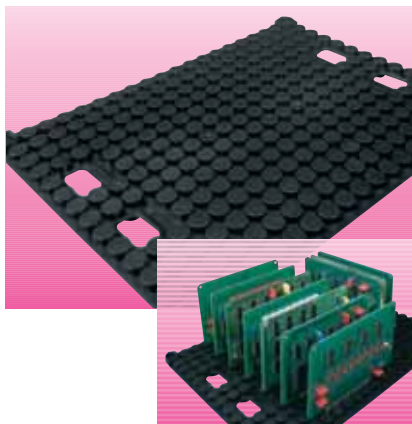


For the protection of electrostatic sensitive products, such as PCB's and other electronic devices.
 Perfect protection and easy to handle!

Description	Part number	Ext. dim. mm	Pockets	Pocket dim.
Pocket Box 6432	63.6432.340.992	600 x 400 x 330	16 pcs	355x295x22
Pocket Box 4332	63.4332.340.992	400 x 300 x 330	8 pcs	355x295x22
Single pocket 0032	63.9980.206.032	355 x 295 x 22	1 pcs	

Circuit board holders

PCBs of all sizes are held simply and safely with wez circuit board holders.
 Two sizes suit different BlackLine containers ensuring good protection, in a visible and organised manner throughout production, testing and storage.



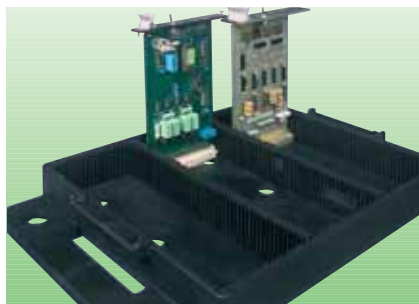
For circuit boards up to 1.6 mm thick. Suits containers 400 x 300 mm.



For circuit boards up to 2.5 mm thick. Suits containers 600 x 400 mm. The easily fitted carrying handle is available as an option.

Part No.	Dimensions mm	Option / material
2535.000.992	357 x 257 x 14 mm	wez 209R, black, conductive
3555.000.992	557 x 357 x 22 mm	wez 209R, black, conductive
9980.026.000		Carrying handle for 3555, stainless steel

Products for special applications



Custom pallet

Designed to accept standard Eurocards, these pallets have vertical slots in all 4 inner walls.

The special partition walls with edge sections on different pitches give a minimum pitch adjustment of 1.7 mm.

Slot pitch 5.08 mm
Slot depth 2.5 mm
Slot width 2.6 mm



Letter Tray A4 Including ESD sign in accordance with IEC 61340-5-1.



ESD paper bin

A large and convenient bin with complete ESD compatibility. Capacity 40 litres.



LG container with lid: Stackable special-purpose container which is strong and non-flexing, smooth inner walls. Supplied with a flat base and snap-on, splash-proof lid. Available in two heights.



TSG container

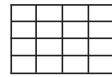
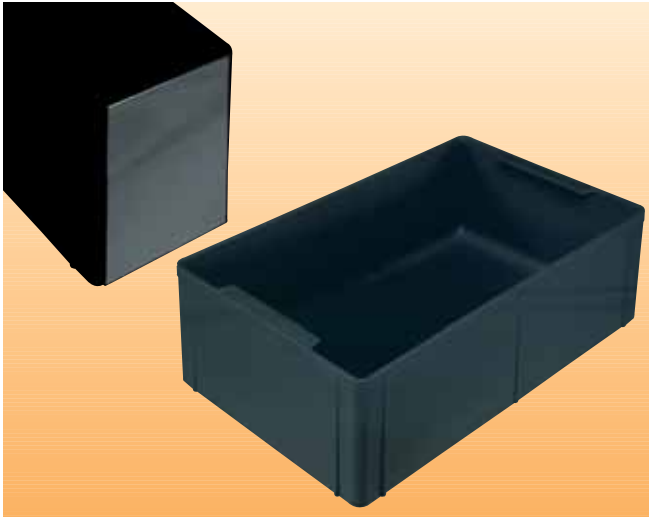
A strong stable stacking box with smooth internal and external walls. Integral label holder for 70 x 40 mm label, at one end.

Part No.	Description	Ext. dim. mm	Int. dim. mm
4327.946.992*	Custom pallet with 2 partitions	438 x 278 x 46	318 x 264 x 040
2604.130.992	Partition	246 x 040	
3526.060.392	Letter Tray A4	343 x 258 x 53	
0540.040.992	ESD paper bin, 40 litres	330 x 235 x 530	
5033.098.992	LG container*	500 x 330 x 98	470 x 300 x 080
5033.140.992	LG container*	500 x 330 x 140	470 x 300 x 122
4427.075.992	TSG container*	445 x 275 x 75	432 x 262 x 069

*Availability on request only.

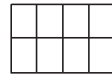
Insert containers

Flexible dividing systems for BlackLine containers offer various possibilities.



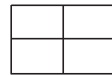
1/16 **VARIOBOX 110**

Inserts for container 600 x 400 mm.



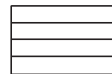
1/8

All round easy-access interior radius. 2 grip bars, standard height 110 mm. Suitable label holder.

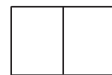


1/4

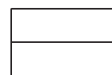
Available in 6 sizes, stackable.



1/4 L



1/2



1/2 L

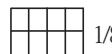
Order No.	Designation	Overall dim. mm	Inside dim. mm
1308.110.392	Variobox 1/16	137 x 087 x 110	132 x 082 x 105
1713.110.392	Variobox 1/8	174 x 137 x 110	168 x 131 x 105
2717.110.392	Variobox 1/4	274 x 174 x 110	268 x 168 x 105
5508.110.392	Variobox 1/4 L	550 x 087 x 110	544 x 081 x 105
3527.110.392	Variobox 1/2	350 x 274 x 110	344 x 268 x 105
5517.110.392	Variobox 1/2 L	550 x 174 x 110	544 x 168 x 105
9980.048.000	Label holder	104 x 074	



1/16

VARIOBOX 55

Inserts for container 400 x 300 mm.



1/8

Easy-access interior radius on the front side.



1/4

Grip bar with integrated label holder on the backside.

Available in 3 sizes, grey.

Standard height 55 mm.

Order No.	Designation	Overall dim. mm	Inside dim. mm
0609.055.392	Variobox 1/16	064 x 089 x 055	060 x 084 x 052
1309.055.392	Variobox 1/8	128 x 089 x 055	124 x 084 x 052
1318.055.392	Variobox 1/4	128 x 178 x 055	124 x 173 x 052
9980.151.000	Label	055 x 9.5	

Insert containers



USA insert container
Available with or without a lid, smooth interior and exterior walls. Internal partition for 2 or 4 divisions.

10 inserts fit in container 6408



Part No.	Description	Ext. dim. mm	Int. dim. mm
1711.055.992	USA model	179 x 112 x 055	173 x 106 x 052
1042.002.992	Partition for 1711	109 x 042	
1711.011.992	Lid for 1711	179 x 112	



Kitting box, nestable, two sizes.
3 pcs of 1608.070 fit in container 3208.
3 pcs of 2612.070 fit in container 4308.



Part No.	Description	Ext. dim. mm
1608.070.992*	Kitting box, nestable	160 x 087 x 070
2612.070.992*	Kitting box, nestable	260 x 120 x 070

*Availability on request only.

Divider systems

Divider panels for customising wez BlackLine containers, in standard lengths to suit different sizes of containers.



Divider inserts 3610/5610, height 100 mm.
Smallest division 32 x 37 mm, suit containers 600 x 400 mm as from internal depth 133 mm.



Divider inserts 2610/3610, height 100 mm.
Smallest division 32 x 32 mm, suit containers 400 x 300 mm as from internal depth 133 mm.

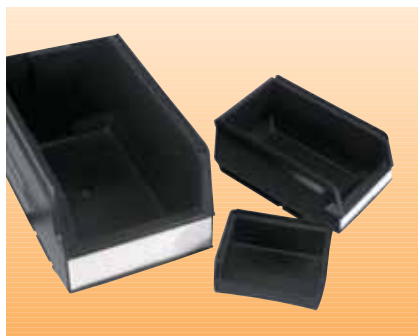


Divider inserts 3620/5620, height 200 mm.
Smallest division 68 x 76 mm, suit containers 600 x 400 mm as from internal depth 266 mm.

Part No.	Description	Dimensions mm	Min. spacing mm*
2610.003.992	Divider insert 300	258 x 100	30
3610.003.992	Divider insert 400	358 x 100	36
5610.003.992	Divider insert 600	558 x 100	40
3620.003.992	Divider insert 400	358 x 200	71
5620.003.992	Divider insert 600	558 x 200	80

*To calculate the usable spacing, subtract 7 mm

Boxes with lids and small containers



ESD bins

Smooth design, open small-side for catching.

Rack holder on backside. Integrated label holder.

Part No.	Description	Ext. dim. mm	Int. dim. mm
9073.900.920	Storage bin	350x206x 150	Label 9073.830
9074.900.920	Storage bin	250x 148x 130	Label 9074.830
9075.900.920	Storage bin	170x 105x 075	Label 9075.830
9076.900.920	Storage bin	096x 105x 045	



One-piece box and lid with film hinge and snap lock. The 1308 size has an

integral document holder in the lid. All versions are also available with foam inserts.

Part No.	Description	Ext. dim. mm	Int. dim. mm
1308.014.992	Box with lid	136 x 087 x 19	130 x 080 x 14
1308.030.992	Box with lid	136 x 087 x 35	130 x 080 x 35
1308.050.992	Box with lid	136 x 087 x 55	130 x 080 x 50
1814.080.992	Box with lid	180 x 140 x 80	178 x 133 x 78
2212.060.992	Box with lid	225 x 125 x 60	221 x 121 x 55



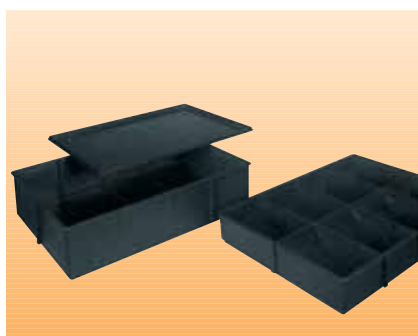
Chip box with film hinge and closed cell foam inserts. For the storing and mailing of electronic components. Internal dim. 130 x 80 x 14 mm

Part No.	Description	Ext. dim. mm	Int. dim. mm
2647.000.992	Chip box with foam insert	136 x 87 x 19	130 x 80 x 14
9980.082.000	Foam insert	130 x 79 x 07	



wez-Mini containers, practical and stackable, for storing small parts and component storage.

Part No.	Description	Ext. dim. mm	Int. dim. mm
0806.026.992	Mini container	080 x 060 x 26.6	072 x 052 x 25
1208.026.992	Mini container	120 x 080 x 26.6	112 x 072 x 25
1208.053.992	Mini container	120 x 080 x 53.2	112 x 072 x 52



Stacking box, with lid and optional partitions for 2 to 8 sections.

Practical, A4 paper size, this box is available in two different heights.

Part No.	Description	Ext. dim. mm	Int. dim. mm
3325.050.992*	Stacking box	328 x 248 x 50	316 x 236 x 42
3325.080.992*	Stacking box	328 x 248 x 80	316 x 236 x 72
3325.000.992*	Lid	328 x 248	
3004.002.992*	Long partition	322 x 039	
2004.002.992*	Short partition	242 x 039	

*Availability on request only.

Stacking and transport accessories



Extension frame to increase useful container height by 44 mm. Fixed to container by Nylatches or U-clips. Available in two sizes: 600 x 400 and 400 x 300 mm.



ESD-trolley made of plastic, max. load 250 kg, conductive rubber wheels, diameter 100 mm, size 600x 400 mm.



Conductive trolley base, for loads up to 300 kg. Available with or without push bar. 600 x 400 mm.



U-clips: metal fixing clips.

Nylatch: two-part expanding plastic latch.



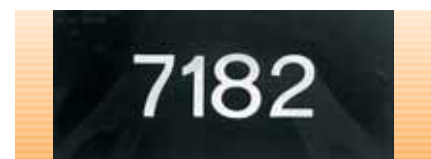
Interlayer of conugated conductive PP, for better utilisation of container space.

Part No.	Description	Options	Dimensions mm
4304.700.992	Extension frame	loose	400 x 300 x 44
4304.714.992		mounted with 4 Nylatches	
4304.728.992		mounted with 8 U-clips	
6404.700.992	Extension frame	loose	600 x 400 x 44
6404.714.992		mounted with 4 Nylatches	
6404.720.992		mounted with 10 U-clips	
9980.006.000	Nylatch		
9980.007.000	U-clips		
9980.014.990	Auxiliary grip		
6400.008.000	Trolley base No. 1, conductive, without push bar		600 x 400
6400.009.000	Trolley base No. 2, conductive, with push bar		600 x 400
6400.005.000	ESD-trolley made of plastic		600 x 400
9980.080.000	Interlayer		255 x 355 x 03
9980.081.000	Interlayer		355 x 555 x 03

Printing options

we can print any desired logo on your BlackLine containers, by hot stamping in single or multi colours, on 1 to 4 sides, plus lid. Ideal for publicity, logistics and/or protection purposes using various warning signs.

Company logos, etc. will be based on your original artwork. Numbering (sequential if desired) with 1, 2, 3, or 4 cm high standard figures is also available.



Part No.	Designation	Colour
63.9981.000.001	Lettering on 1 side	Single colour
63.9981.000.002	Lettering on 2 sides	Single colour
63.9981.000.004	Lettering on 4 sides	Single colour
63.9981.001.001	Numbering on 1 side	Single colour
63.9981.001.002	Numbering on 2 sides	Single colour
63.9981.001.004	Numbering on 4 sides	Single colour

Labelling systems



Label clip, riveted, any position.



Label clip, fixes on to container rib.



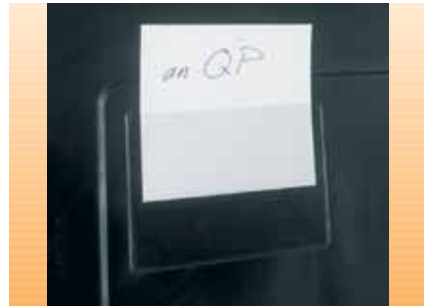
Label pocket H-90, conductive black, or transparent. Height 90 mm, for document width 210 mm. Fixes to container with U-clips.



Label pocket H-44, transparent. Height 44 mm, for document widths up to 210 mm. With adhesive tape.



Label pocket Mopac, transparent. Height 70 mm, for document width 210 mm. Holds document on outside of container. With adhesive tape.



Flexible label pocket, transparent, various sizes, self-adhesive.

Part No.	Description	Option	Version
9980.002.000	Label clip, for riveting, loose		Galvanised
9980.001.000	Label clip, riveted		Galvanised
9980.005.000	Label clip, for clip-on, loose		Galvanised
9980.004.000	Label clip, clipped-on		Galvanised
63.9980.013.000	Label pocket, loose	H-90	Black, conductive
63.9980.045.000	Label pocket, mounted	H-90	Black, conductive
60.9980.046.000	Label pocket, loose	H-90	Transparent
60.9980.045.000	Label pocket, mounted	H-90	Transparent
63.9980.085.000	Label pocket, loose	H-44	Black, conductive
63.9980.086.000	Label pocket, glued-on	H-44	Black, conductive
60.9980.085.000	Label pocket, loose	H-44	Transparent
60.9980.086.000	Label pocket, glued-on	H-44	Transparent
60.9980.121.000	Label pocket, loose	MOPAC	Transparent
60.9980.821.000	Label pocket, glued-on	MOPAC	Transparent
63.9980.050.000	Flex. label pocket, loose	83 x 115 mm	Transparent
63.9980.950.000	Flex. label pocket, glued-on	83 x 115 mm	Transparent
63.9980.039.000	Flex. label pocket, loose	115 x 156 mm	Transparent
63.9980.939.000	Flex. label pocket, glued-on	115 x 156 mm	Transparent

ESD-
version

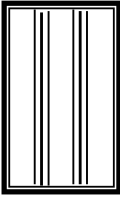
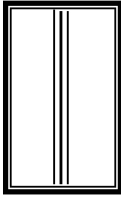
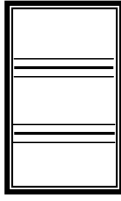
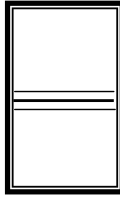
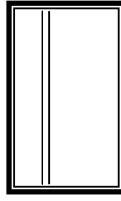
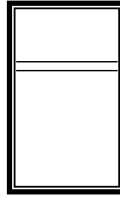
Operating instruction to Printorama system 600x400

Instruction	Example
<ol style="list-style-type: none"> 1. Measure the insertion (dimension) width of the PCB 2. Determine the optimum utilization possibilities of available space by means of the table shown below. 3. Find the next higher size in the corresponding column (partition wall 400 or 600) on page 30. 4. Read the scale number and plug-in the chosen partition wall at the corresponding scale number. 	<ol style="list-style-type: none"> 1. Insertion width measured on the circuit board = 375mm. 2. Optimum utilization of available space in accordance with the table shown below: 1 lateral row with partition 400 3. The next higher dimension is 375.42 mm in the column 400 partition wall, normal distance at scale number 22 (page 30). 4. Plug-in partition wall 400 normal distance version at scale number 22.

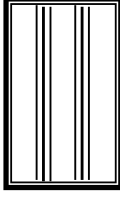
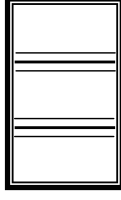
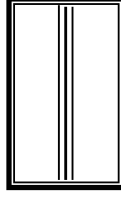
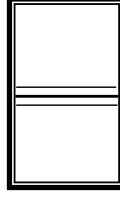
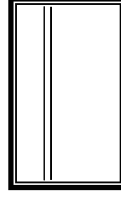
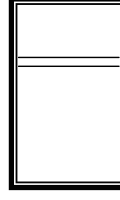
Operating instruction to Printorama System 400 x 300

Instruction	Example
<ol style="list-style-type: none"> 1. Measure the insertion (dimension) width of the PCB 2. Determine the optimum utilization possibilities of available space by means of the table shown below. 3. Find the next higher size in the corresponding column (partition wall 400 or 300) on page 30. 4. Read the scale number and plug-in the chosen partition wall at the corresponding scale number. 	<ol style="list-style-type: none"> 1. Insertion width measured on the circuit board = 210mm. 2. Optimum utilization of available space in accordance with the table shown below: 1 longitudinal row with partition 400 3. The next higher dimension is 210.83mm in the column 400 partition wall, minus distance at scale number 19 (page 30). 4. Plug-in partition wall 400 minus distance version at scale number 19.

Optimum space utilization in Printorama system 600x400

PCB insertion width	Division by	Layout	schematic representation
up to 96 mm	4 partition walls 600	3 longitudinal rows	
96 - 157 mm	2 partition walls 600	2 longitudinal rows	
157 - 164.5 mm	4 partition walls 400	3 lateral rows	
164.5 - 257 mm	2 partition walls 400	2 lateral rows	
257 - 325 mm 333.4 - 335 mm	1 partition wall 600 without partition wall	1 longitudinal row	
325 - 529 mm 533.4 - 535 mm	1 partition wall 400 without partition wall	1 lateral row	

Optimum space utilization in Printorama System 400x300

PCB insertion width	Division by	Layout	schematic representation
up to 64 mm	4 partition walls 400	3 longitudinal rows	
64 - 96 mm	4 partition walls 300	3 lateral rows	
96 - 107.5 mm	2 partition walls 400	2 longitudinal rows	
107.5 - 157 mm	2 partition walls 300	2 lateral rows	
157 - 229 mm 233.4 - 235 mm	1 partition wall 400 without partition wall	1 longitudinal row	
229 - 330.2 mm 333.4 - 335 mm	1 partition wall 300 without partition wall	1 lateral row	

Dimension chart to WEZ Printorama system 600x400 und 400x300

Slot division 5.08mm

Partition wall 400 for system 600x400			
Scale no	min dist	normal dist	plus dist
51	7.97	9.66	11.35
50	13.05	14.74	16.43
49	18.13	19.82	21.51
48	23.21	24.9	26.59
47	28.29	29.98	31.67
46	33.37	35.06	36.75
45	38.45	40.14	41.83
44	43.53	45.22	46.91
43	48.61	50.3	51.99
42	53.69	55.38	57.07
41	58.77	60.46	62.15
40	63.85	65.54	67.23
39	68.93	70.62	72.31
38	74.01	75.7	77.39
37	79.09	80.78	82.47
36	84.17	85.86	87.55
35	89.25	90.94	92.63
34	94.33	96.02	97.71
33	99.41	101.1	102.79
32	104.49	106.18	107.87
31	109.57	111.26	112.95
30	114.65	116.34	118.03
29	119.73	121.42	123.11
28	124.81	126.5	128.19
27	129.89	131.58	133.27
26	134.97	136.66	138.35
25	140.05	141.74	143.43
24	145.13	146.82	148.51
23	150.21	151.9	153.59
22	155.29	156.98	158.67
21	160.37	162.06	163.75
20	165.45	167.14	168.83
19	170.53	172.22	173.91
18	175.61	177.3	178.99
17	180.69	182.38	184.07
16	185.77	187.46	189.15
15	190.85	192.54	194.23
14	195.93	197.62	199.31
13	201.01	202.7	204.39
12	206.09	207.78	209.47
11	211.17	212.86	214.55
10	216.25	217.94	219.63
9	221.33	223.02	224.71
8	226.41	228.1	229.79
7	231.49	233.18	234.87
6	236.57	238.26	239.95
5	241.65	243.34	245.03
4	246.73	248.42	250.11
3	251.81	253.5	255.19
2	256.89	258.58	260.27
1	261.97	263.66	265.35
1	267.05	268.74	270.43
2	272.13	273.82	275.51
3	277.21	278.9	280.59
4	282.29	283.98	285.67
5	287.37	289.06	290.75
6	292.45	294.14	295.83
7	297.53	299.22	300.91
8	302.61	304.3	305.99
9	307.69	309.38	311.07
10	312.77	314.46	316.15
11	317.85	319.54	321.23
12	322.93	324.62	326.31
13	328.01	329.7	331.39
14	333.09	334.78	336.47
15	338.17	339.86	341.55
16	343.25	344.94	346.63
17	348.33	350.02	351.71
18	353.41	355.1	356.79
19	358.49	360.18	361.87
20	363.57	365.26	366.95
21	368.65	370.34	372.03
22	373.73	375.42	377.11
23	378.81	380.5	382.19
24	383.89	385.58	387.27
25	388.97	390.66	392.35
26	394.05	395.74	397.43
27	399.13	400.82	402.51
28	404.21	405.9	407.59
29	409.29	410.98	412.67
30	414.37	416.06	417.75
31	419.45	421.14	422.83
32	424.53	426.22	427.91
33	429.61	431.3	432.99
34	434.69	436.38	438.07
35	439.77	441.46	443.15
36	444.85	446.54	448.23
37	449.93	451.62	453.31
38	455.01	456.7	458.39
39	460.09	461.78	463.47
40	465.17	466.86	468.55
41	470.25	471.94	473.63
42	475.33	477.02	478.71
43	480.41	482.1	483.79
44	485.49	487.18	488.87
45	490.57	492.26	493.95
46	495.65	497.34	499.03
47	500.73	502.42	504.11
48	505.81	507.5	509.19
49	510.89	512.58	514.27
50	515.97	517.66	519.35
51	521.05	522.74	524.43
52	526.13	527.82	529.51

Partition wall 400 for system 400x300			
Scale no	min dist	normal dist	plus dist
21	7.63	9.32	11.01
20	12.71	14.4	16.09
19	17.79	19.48	21.17
18	22.87	24.56	26.25
17	27.95	29.64	31.33
16	33.03	34.72	36.41
15	38.11	39.8	41.49
14	43.19	44.88	46.57
13	48.27	49.96	51.65
12	53.35	55.04	56.73
11	58.43	60.12	61.81
10	63.51	65.2	66.89
9	68.59	70.28	71.97
8	73.67	75.36	77.05
7	78.75	80.44	82.13
6	83.83	85.52	87.21
5	88.91	90.6	92.29
4	93.99	95.68	97.37
3	99.07	100.76	102.45
2	104.15	105.84	107.53
1	109.23	110.92	112.61
—	114.31	116	117.69
1	119.39	121.08	122.77
2	124.47	126.16	127.85
3	129.55	131.24	132.93
4	134.63	136.32	138.01
5	139.71	141.4	143.09
6	144.79	146.48	148.17
7	149.87	151.56	153.25
8	154.95	156.64	158.33
9	160.03	161.72	163.41
10	165.11	166.8	168.49
11	170.19	171.88	173.57
12	175.27	176.96	178.65
13	180.35	182.04	183.73
14	185.43	187.12	188.81
15	190.51	192.2	193.89
16	195.59	197.28	198.97
17	200.67	202.36	204.05
18	205.75	207.44	209.13
19	210.83	212.52	214.21
20	215.91	217.6	219.29
21	220.99	222.68	224.37
22	226.07	227.76	229.45

Partition wall 600 und 300			
Scale no	min dist	normal dist	plus dist
30	11.91	13.6	15.29
29	16.99	18.68	20.37
28	22.07	23.76	25.45
27	27.15	28.84	30.53
26	32.23	33.92	35.61
25	37.31	39	40.69
24	42.39	44.08	45.77
23	47.47	49.16	50.85
22	52.55	54.24	55.93
21	57.63	59.32	61.01
20	62.71	64.4	66.09
19	67.79	69.48	71.17
18	72.87	74.56	76.25
17	77.95	79.64	81.33
16	83.03	84.72	86.41
15	88.11	89.8	91.49
14	93.19	94.88	96.57
13	98.27	99.96	101.65
12	103.35	105.04	106.73
11	108.43	110.12	111.81
10	113.51	115.2	116.89
9	118.59	120.28	121.97
8	123.67	125.36	127.05
7	128.75	130.44	132.13
6	133.83	135.52	137.21
5	138.91	140.6	142.29
4	143.99	145.68	147.37
3	149.07	150.76	152.45
2	154.15	155.84	157.53
1	159.23	160.92	162.61
—	164.31	166	167.69
1	169.39	171.08	172.77
2	174.47	176.16	177.85
3	179.55	181.24	182.93
4	184.63	186.32	188.01
5	189.71	191.4	193.09
6	194.79	196.48	198.17
7	199.87	201.56	203.25
8	204.95	206.64	208.33
9	210.03	211.72	213.41
10	215.11	216.8	218.49
11	220.19	221.88	223.57
12	225.27	226.96	228.65
13	230.35	232.04	233.73
14	235.43	237.12	238.81
15	240.51	242.2	243.89
16	245.59	247.28	248.97
17	250.67	252.36	254.05
18	255.75	257.44	259.13
19	260.83	262.52	264.21
20	265.91	267.6	269.29
21	270.99	272.68	274.37
22	276.07	277.76	279.45
23	281.15	282.84	284.53
24	286.23	287.92	289.61
25	291.31	293	294.69
26	296.39	298.08	299.77
27	301.47	303.16	304.85
28	306.55	308.24	309.93
29	311.63	313.32	315.01
30	316.71	318.4	320.09
31	321.79	323.48	325.17

To reach the grey marked dimensions, the partitions have to be milled off on the back! Availability on request!

Usable heights of Container / Printorama units				
Containers	Usable height mm without lid		Usable height mm with lid	
	Container/Printorama	Container / Secondo	Container/Printorama	Container / Secondo
4308.007 / 6408.007	127	—	137	—
4313.900 / 6413.000	160	116	170	126
4313.907 / 6413.007	172	128	182	138
4320.000 / 6420.000	227	183	237	193
4320.007 / 6420.007	239	195	249	205
4326.000 / 6426.000	293	249	303	259
4326.007 / 6426.007	304	260	314	270
4332.000 / 6432.000	334	290	344	300
4332.007 / 6432.007	346	302	356	312
6440.000	426	382	436	392
6440.007	438	394	448	404

Additional or intermediate heights of 44mm may be achieved with the extension frames 4304.700 (400x300), or 6404.700 (600x400)!



Plastic injection moulding: our key strength.

Since 1956 we have been producing injection-moulded thermoplastic components from 6 g to 6 kg in weight at our Oberentfelden manufacturing plant in the Aargau region of Switzerland. We are one of Switzerland's largest processors of plastics, with three main product ranges:

wez LogiLine: the comprehensive range of containers and accessories for all logistics requirements.

wez Blackline: a full range of antistatic plastic containers, racks and packagings for the protection of electronic components.

wez Crealine: development and production of high-grade thermoplastic components and assemblies.

Product development and toolmaking

Combining advanced tools like 2D and 3D CAD facilities with the creativity of our development specialists, designers and plastics engineers, guarantees innovative customer-oriented solutions in toolmaking and product development.

Production

We have more than 30 computerised injection moulding machines running on a 3-shift production basis, producing components and assemblies for worldwide customers. Our modern manufacturing operation includes all the necessary peripheral equipment for stamping, ultrasonic and reflector welding and other assembly operations.

wez processes all commercial plastic types (with the exception of PVC). Trucks deliver the main material batches straight to silos which are linked directly to our production equipment.

Quality

The product and service quality on which our customers rely is guaranteed by daily implementation of our EN/ISO 9001:2000-certified quality assurance system – from development through to production and sales.

Warehousing and despatch

Our large warehousing facilities ensure fast delivery of our comprehensive product range to all five continents.

You are welcome to pay us a visit. We look forward to showing you how we could work together to create a successful partnership.

wez
SUISSE





wez Kunststoffwerk AG
Postfach
CH-5036 Oberentfelden
Tel. +41 (0)62 737 88 00
Fax +41 (0)62 737 88 10
info@wez.ch
www.wez.ch