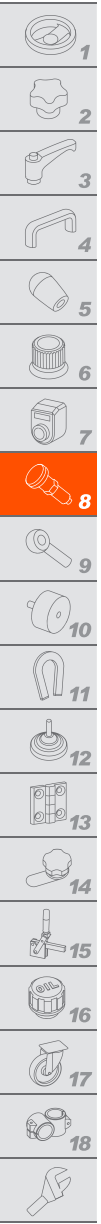


# GN 722.2 | Lever indexing plungers

Rest position, steel or stainless steel



## STANDARD EXECUTIONS

- **GN 722.2-A:** protruding plunger with the lever perpendicular to the axis of the fixing holes.
- **GN 722.2-B:** protruding plunger with the lever parallel to the axis of the fixing holes.

Index for material and finish:

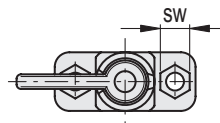
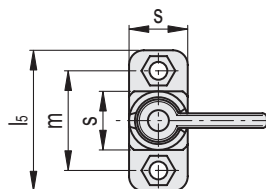
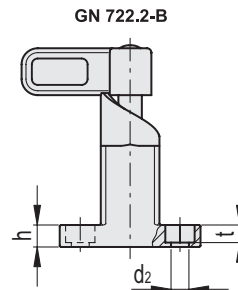
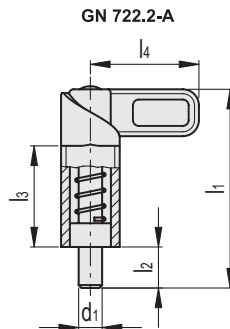
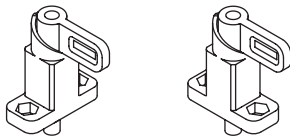
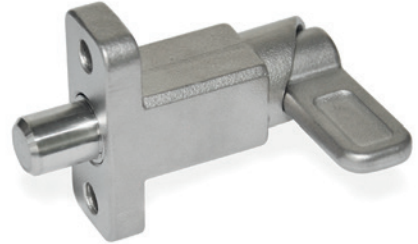
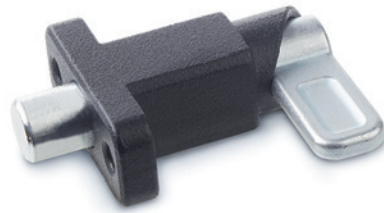
- **A4:** body and lever made out of cast AISI 316 stainless steel for welding, AISI 316 stainless steel plunger, AISI 316Ti stainless steel spring.
- **SW:** body made out of cast zinc-plated steel, epoxy resin coating, RAL 9005 black colour, matte finish. Cast zinc-plated steel lever, zinc-plated steel plunger, AISI 301 stainless steel spring.
- **ZB:** body made out of cast zinc-plated steel, cast zinc-plated steel lever, zinc-plated steel plunger, AISI 301 stainless steel spring.

## FEATURES AND APPLICATIONS

GN 722.2 lever indexing plungers are used when the plunger must be retracted quickly.

By rotating the lifting lever by 180°, a notch keeps the plunger in the retracted position.

The very small dimensional tolerances guarantee the necessary functional safety even in case of dirt.



Indexing and positioning elements



## GN 722.2-A-A4

INOX STAINLESS STEEL

Code	Description	d1															
		Plunger -0.05-0.25 Hole +0.30 +0.10	d2+0.2	h	l1	l2	l3	l4	l5	s	sw	t	m	[N]*	[N]#		
GN.39411	GN 722.2-8-20-A-A4	8	6.1	7.5	68	14	35	37	48	20	10	6.1	34	16	45	178	
GN.39421	GN 722.2-10-20-A-A4	10	6.1	7.5	68	14	35	37	48	20	10	6.1	34	16	45	180	
GN.39431	GN 722.2-12-20-A-A4	12	6.1	7.5	68	14	35	37	48	20	10	6.1	34	16	45	180	
GN.39441	GN 722.2-14-20-A-A4	14	6.1	7.5	68	14	35	37	48	20	10	6.1	34	16	45	200	

## GN 722.2-A-SW

Code	Description	d1															
		Plunger -0.05-0.25 Hole +0.30 +0.10	d2+0.2	h	l1	l2	l3	l4	l5	s	sw	t	m	[N]*	[N]#		
GN.39361	GN 722.2-8-20-A-SW	8	6.1	7.5	68	14	35	37	48	20	10	6.1	34	16	55	178	
GN.39363	GN 722.2-10-20-A-SW	10	6.1	7.5	68	14	35	37	48	20	10	6.1	34	16	55	180	
GN.39365	GN 722.2-12-20-A-SW	12	6.1	7.5	68	14	35	37	48	20	10	6.1	34	16	55	180	
GN.39367	GN 722.2-14-20-A-SW	14	6.1	7.5	68	14	35	37	48	20	10	6.1	34	16	55	200	

## GN 722.2-A-ZB

Code	Description	d1															
		Plunger -0.05-0.25 Hole +0.30 +0.10	d2+0.2	h	l1	l2	l3	l4	l5	s	sw	t	m	[N]*	[N]#		
GN.39413	GN 722.2-8-20-A-ZB	8	6.1	7.5	68	14	35	37	48	20	10	6.1	34	16	55	178	
GN.39423	GN 722.2-10-20-A-ZB	10	6.1	7.5	68	14	35	37	48	20	10	6.1	34	16	55	180	
GN.39433	GN 722.2-12-20-A-ZB	12	6.1	7.5	68	14	35	37	48	20	10	6.1	34	16	55	180	
GN.39443	GN 722.2-14-20-A-ZB	14	6.1	7.5	68	14	35	37	48	20	10	6.1	34	16	55	200	

## GN 722.2-B-A4

INOX STAINLESS STEEL

Code	Description	d1															
		Plunger -0.05-0.25 Hole +0.30 +0.10	d2+0.2	h	l1	l2	l3	l4	l5	s	sw	t	m	[N]*	[N]#		
GN.39415	GN 722.2-8-20-B-A4	8	6.1	7.5	68	14	35	37	48	20	10	6.1	34	16	45	178	
GN.39425	GN 722.2-10-20-B-A4	10	6.1	7.5	68	14	35	37	48	20	10	6.1	34	16	45	180	
GN.39435	GN 722.2-12-20-B-A4	12	6.1	7.5	68	14	35	37	48	20	10	6.1	34	16	45	180	
GN.39445	GN 722.2-14-20-B-A4	14	6.1	7.5	68	14	35	37	48	20	10	6.1	34	16	45	200	

## GN 722.2-B-SW

Code	Description	d1															
		Plunger -0.05-0.25 Hole +0.30 +0.10	d2+0.2	h	l1	l2	l3	l4	l5	s	sw	t	m	[N]*	[N]#		
GN.39362	GN 722.2-8-20-B-SW	8	6.1	7.5	68	14	35	37	48	20	10	6.1	34	16	55	178	
GN.39364	GN 722.2-10-20-B-SW	10	6.1	7.5	68	14	35	37	48	20	10	6.1	34	16	55	180	
GN.39366	GN 722.2-12-20-B-SW	12	6.1	7.5	68	14	35	37	48	20	10	6.1	34	16	55	180	
GN.39368	GN 722.2-14-20-B-SW	14	6.1	7.5	68	14	35	37	48	20	10	6.1	34	16	55	200	

## GN 722.2-B-ZB

Code	Description	d1															
		Plunger -0.05-0.25 Hole +0.30 +0.10	d2+0.2	h	l1	l2	l3	l4	l5	s	sw	t	m	[N]*	[N]#		
GN.39417	GN 722.2-8-20-B-ZB	8	6.1	7.5	68	14	35	37	48	20	10	6.1	34	16	55	178	
GN.39427	GN 722.2-10-20-B-ZB	10	6.1	7.5	68	14	35	37	48	20	10	6.1	34	16	55	180	
GN.39437	GN 722.2-12-20-B-ZB	12	6.1	7.5	68	14	35	37	48	20	10	6.1	34	16	55	180	
GN.39447	GN 722.2-14-20-B-ZB	14	6.1	7.5	68	14	35	37	48	20	10	6.1	34	16	55	200	

\* Spring preload

# Spring maximum load