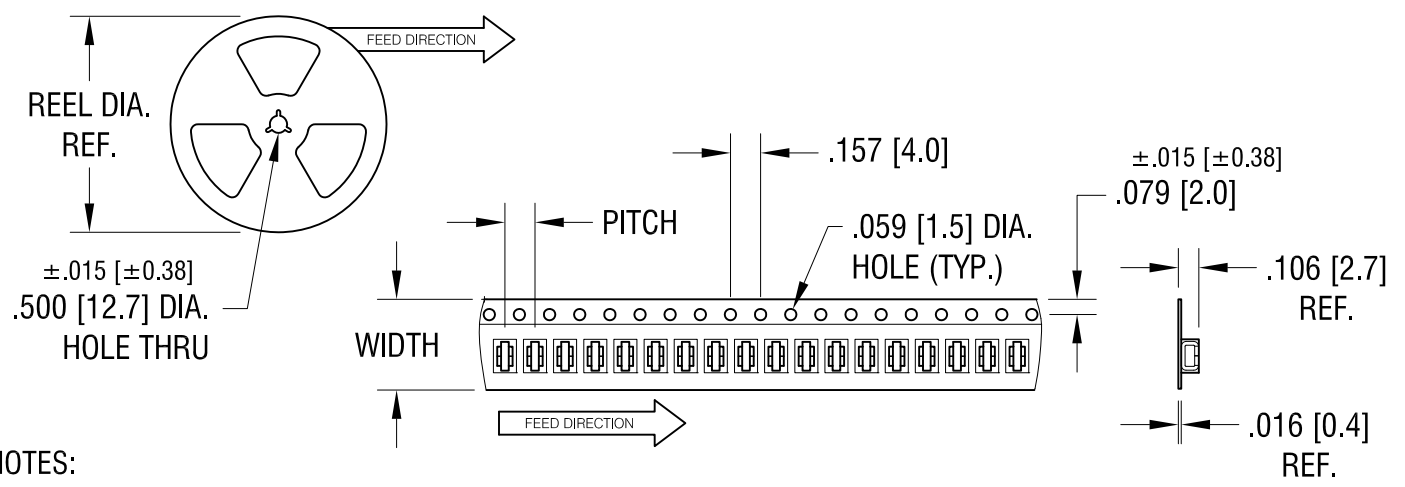
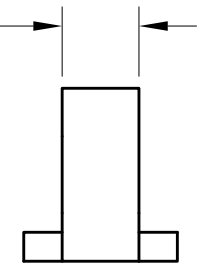
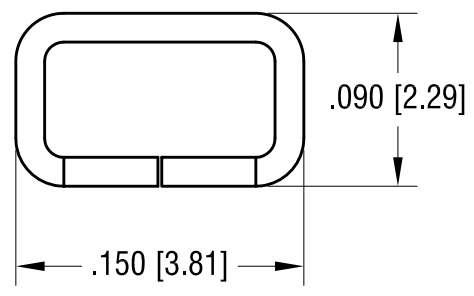
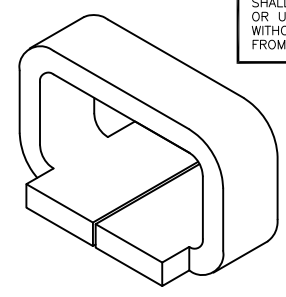
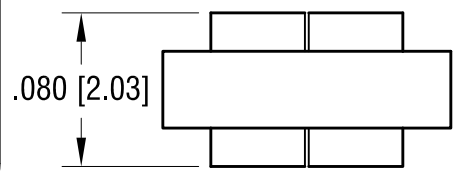
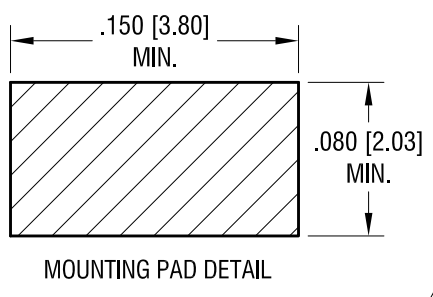


THIS DOCUMENT IS THE PROPERTY OF KEYSTONE ELECTRONICS CORP. AND SHALL NOT BE REPRODUCED, DISTRIBUTED OR USED AS A BASIS FOR MANUFACTURE WITHOUT PRIOR WRITTEN PERMISSION FROM KEYSTONE ELECTRONICS CORP.



NOTES:

1. SUPPLIED ON TAPE AND REEL ONLY.
TAPES AND REEL SPECIFICATIONS:
2. TAPE:
MAT'L - ALL CONDUCTIVE POLYSTYRENE CARRIER
ANSI/EIA-481 STANDARD
.472 [12.0] WIDE; .157 [4.0] PITCH
3. REEL:
13.0 [330.00] DIA. 5000 PIECES OF
PART NO. 5029 PER REEL.

3.18.14	CHANGE AS PER ECN 014-032	B
6.21.12	SPLIT C/M TO 'C' & 'M' CHANGE AS PER ECN 12-076	A
DATE	DESCRIPTION	REV.

KEYSTONE ELECTRONICS CORP.		
www.keyelco.com • ASTORIA, N.Y. 11105-2017 • Tel (718) 956-8900		
PART NAME		
TEST POINT, COMPACT, SURFACE MOUNT		
MATERIAL		
.015 [0.38] TH'K PHOSPHOR BRONZE		
FINISH		DRN BY
SILVER PLATE		NT
		DATE
		3.11.11
		APP'D
		LN
		SCALE
		10X, 1X
TOLERANCES	INCH [MM]	CODE
DECIMAL	± .005 [± 0.13]	C
ANGULAR	± 1°	
UNLESS OTHERWISE SPECIFIED		
DWG NO.		5029