



LV HRC FUSE LINK GL/GG WITH NON-INSULATED GRIP LUGS WITH FRONT INDICATOR SIZE 1, 50A, AC 500V/DC 440V

Figure similar

| Model | | |
|--|----|---------------------------------|
| product brand name | | SENTRON |
| Product designation | | LV HRC fuse link |
| Design of an identification indicator | | Front indicators |
| Design of the switching contact | | Non-corroding, silver-plated |
| Design of the fuse link | | LV HRC fuse link |
| General technical data | | |
| Size of fuse system / acc. to DIN EN 60269-1 | | NH1 |
| Operating class of the fuse link | | gG |
| circuit-breaker / Design | | 3NA3 |
| Mounting type | | Non-insulated grip lugs |
| Protection class | | |
| Protection class IP | | IP20, with connected conductors |
| Switching capacity | | |
| Switching capacity current | | |
| <ul style="list-style-type: none"> for DC / acc. to IEC 60947-2 / Rated value | kA | 25 |
| <ul style="list-style-type: none"> acc. to IEC 60947-2 / Rated value | kA | 120 |
| Dissipation | | |
| Active power loss | | |
| <ul style="list-style-type: none"> for rated value of the current / with AC / in hot operating state / per pole | W | 4.62 |
| Electricity | | |
| rated current I _n / IEC, DIN/VDE / at 40 Cel | A | 47.5 |

| | | |
|---------------------------------|---|----|
| Current / with AC / Rated value | A | 50 |
|---------------------------------|---|----|

Mechanical Design

| | |
|-------------------|--------------------------|
| mounting position | Any, preferably vertical |
|-------------------|--------------------------|

Environmental conditions

| | | |
|----------------------------|----|---------------------------|
| Ambient temperature | | |
| • minimum | °C | -5 |
| • maximum | °C | 40 |
| • during storage / Note | | Air humidity 90% at 20 °C |

Certificates

| | | |
|--------------------------|--|---|
| Equipment marking | | |
| • acc. to DIN EN 61346-2 | | F |
| • acc. to DIN EN 81346-2 | | F |

| | |
|---------------------------------|----------------------------------|
| General Product Approval | Declaration of Conformity |
|---------------------------------|----------------------------------|



| | | |
|--------------------------|--------------------------|--------------|
| Test Certificates | Shipping Approval | other |
|--------------------------|--------------------------|--------------|

[Special Test Certificate](#)

[Type Test Certificates/Test Report](#)

[other](#)



GL

[Environmental Confirmations](#)

[other](#)

Further information

Information- and Downloadcenter (Catalogs, Brochures,...)

<http://www.siemens.com/lowvoltage/catalogs>

Industry Mall (Online ordering system)

<https://eb.automation.siemens.com/mall/en/WW/Catalog/Product/3NA3120>

Service&Support (Manuals, Certificates, Characteristics, FAQs,...)

<http://support.automation.siemens.com/WW/view/en/3NA3120/all>

Image database (product images, 2D dimension drawings, 3D models, device circuit diagrams, ...)

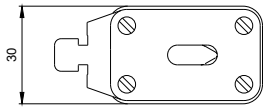
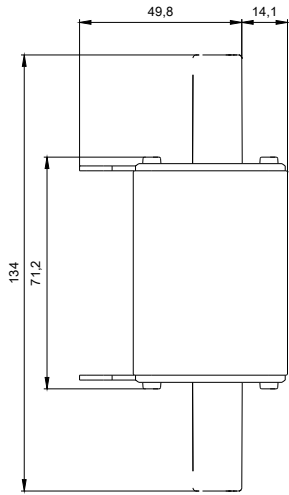
http://www.automation.siemens.com/bilddb/cax_en.aspx?mfb=3NA3120

CAX-Online-Generator

<http://www.siemens.com/cax>

Tender specifications

<http://ausschreibungstexte.siemens.com/tiplv>



last modified:

11.03.2015