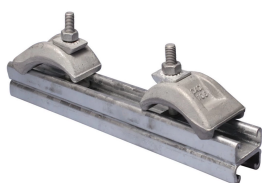




6000 BEAM CLAMP KIT, 15.75", AA STRUT

CATALOG NUMBER

6400AAHD



FEATURES

Back-to-back welded channels provide a smooth and easy adjustable fixing over the complete length of the channel

Pressure clamps grip the strut channel between two lips, protecting it from turning

Safe heavy duty fixing system for cable tray, duct or pipe

PRODUCT ATTRIBUTES

Article Number: 330110

Material: Steel

Finish: Hot-Dip Galvanized

Length: 400 mm

Strut Type: AA (83 x 41 mm)

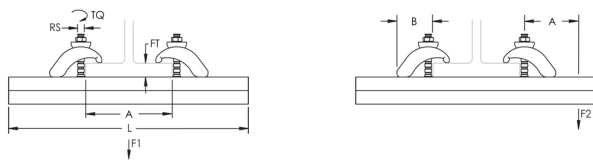
Rod Size: M10

Flange Thickness: 3 – 30 mm

B: 60 mm

Torque: 30 N-m

DIAGRAMS



Strut Type	A	Static Load 1 F1	Static Load 2 F2
CC	200 mm	4000 N	1100 N
	300 mm	3000 N	750-N
	400 mm	2250 N	550-N
	500 mm	1800 N	450-N
	600 mm	1500 N	350-N
AA	200 mm	7000-N	3250-N
	300 mm	7000-N	2250-N
	400 mm	7000 N	1750-N
	500 mm	5500 N	1400-N
	600 mm	4500 N	1150-N

WARNING

nVent products shall be installed and used only as indicated in nVent's product instruction sheets and training materials. Instruction sheets are available at www.nvent.com and from your nVent customer service representative. Improper installation, misuse, misapplication or other failure to completely follow nVent's instructions and warnings may cause product malfunction, property damage, serious bodily injury and death and/or void your warranty.

Noord-Amerika

+1.800.753.9221

Optie 1 - de Zorg van de Klant

Optie 2 - Technische Steun

Europa

Nederland:

+31 800-0200135

Frankrijk:

+33 800 901 793

Europa

Duitsland:

800 1890272

Andere Landen:

+31 13 5835404

APAC

Shanghai:

+ 86 21 2412 1618/19

Sydney:

+61 2 9751 8500



Onze krachtige portefeuille van merken:

nVent.com CADDY ERICO HOFFMAN RAYCHEM SCHROFF TRACER

© nVent 2022. Alle nVent tekens en emblemen worden bezeten of door de nVent Diensten GmbH of zijn filialen vergunning gegeven. Alle andere handelsmerken zijn het bezit van hun respectieve eigenaars.

nVent reserves het recht specificaties zonder bericht te veranderen.