



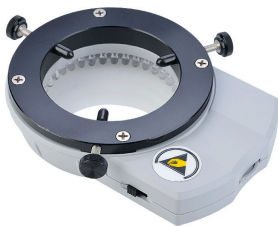
LED-3000

LED-3000 Ring Light - maximizes light output and distribution while preventing harmful glare and reflections. The brilliant 40 LED display with 6000°K color temperature makes this ring light ideal for the inspection of surface cracks and defects as well as for lead-free inspection. ESD-Safe.

LED3000-PF with Polarizing Filter.



- Brilliant 40 LED display consumes 9W of power
- 50,000 hour lumen maintenance
- 6000°K color temperature makes this ring light ideal for the inspection of surface cracks and defects as well as for lead-free inspection
- ESD-Safe
- Self-contained on/off and dimming controls allow for dimming up to 15% output
- Provides up to 3600 footcandles at 4.5" working distance
- Removable/replaceable diffuser cover, allows for easy cleaning and LED array protection from damage and contamination
- LED3000-PF with polarizing filter.



CODES

LED-3000 RING LIGHT

Article Number	Light Source	Watt
LED3000	LED	9W

LED-3000 RING LIGHT WITH POLARIZING FILTER

Article Number	Light Source	Watt
LED3000-PF	LED	9W