

## Type ER precision collet chuck

GERC HP, DIN 6499/ISO 15488-B, concentricity of 2 µm

**FAHRION®**  
FAR BEYOND PRECISION

### Application:

For HSC machining with high-precision machining results.

### Execution:

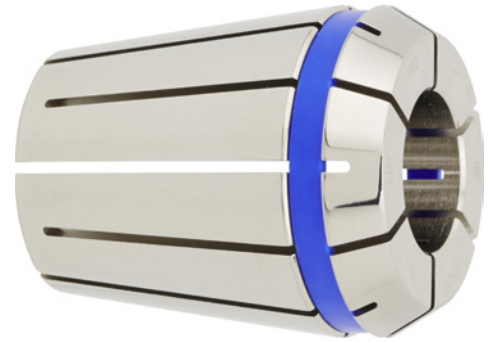
- HP collets with small concentricity and repeat tolerance of 2 µm (for system tolerance of 3 µm and with 3 x dia. maximum = 50 mm), clamp bridge h 10.
- For ATORN precision collet chucks and Fahrion CentroP precision spring collet chucks.
- With FAHRION | Protect corrosion protection for longer service life.
- Surface super-finished for enhanced retention force.

### Advantage:

- Greater concentricity extends tool service life.
- Collets do not need to be replaced as often or can be used longer for specific applications.

### Delivery:

1x type ER precision collet chuck.



<b>Art. no.</b>	<b>23323 537</b>
<b>Brand</b>	FAHRION
<b>Manufacturer Part Number</b>	13613010650
<b>Collet type</b>	426E GERC16-HP
<b>Clamping diameter</b>	6.5 mm
<b>Min./max. clamping range</b>	1-10 mm
<b>Outer diameter</b>	17 mm
<b>Length</b>	27.5 mm
<b>Coolant supply</b>	External
<b>Clamping bypass</b>	-1 mm
<b>Gross Weight</b>	0.025 kg
<b>Product Group</b>	235

### EAN

4054631173684