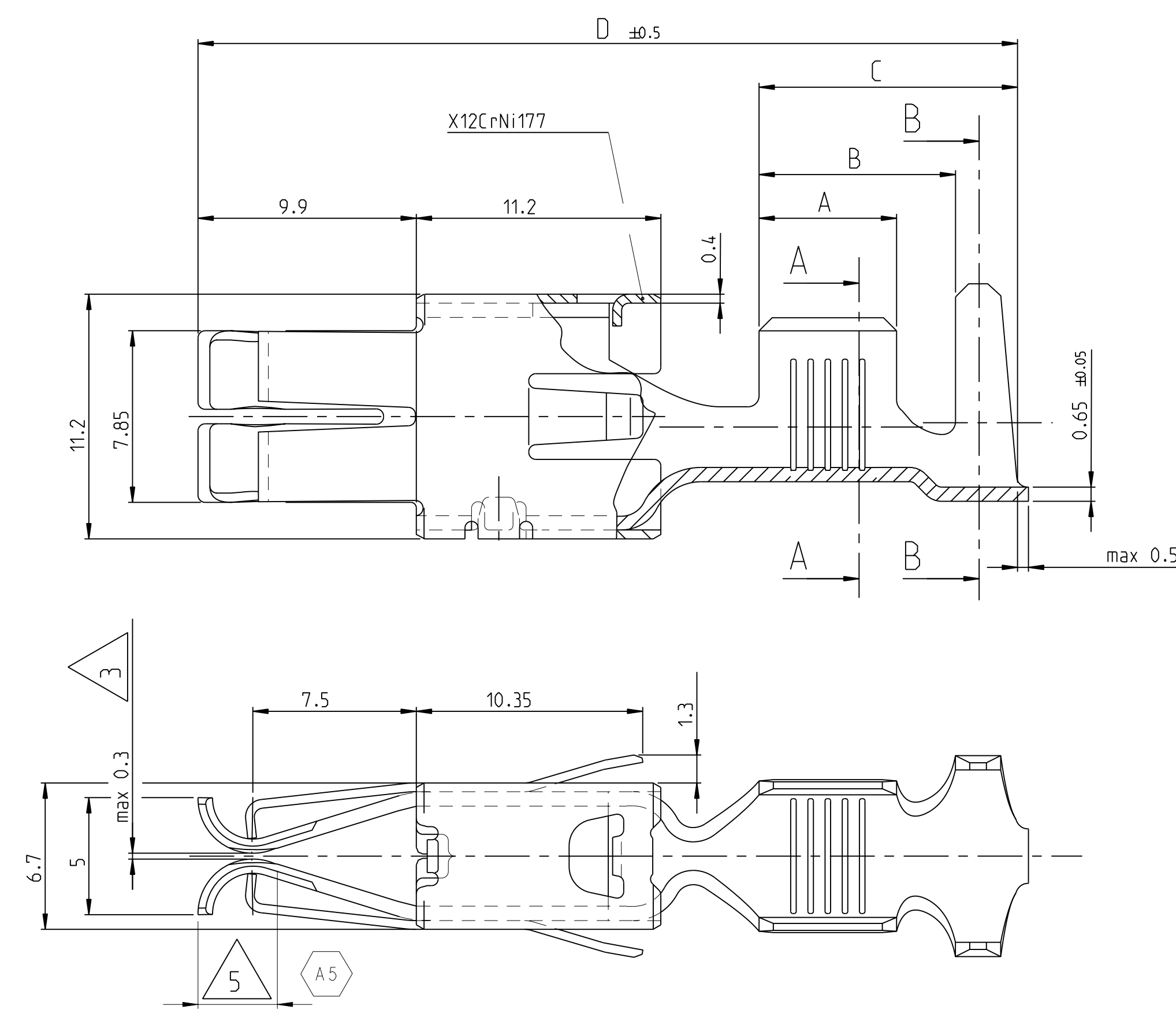
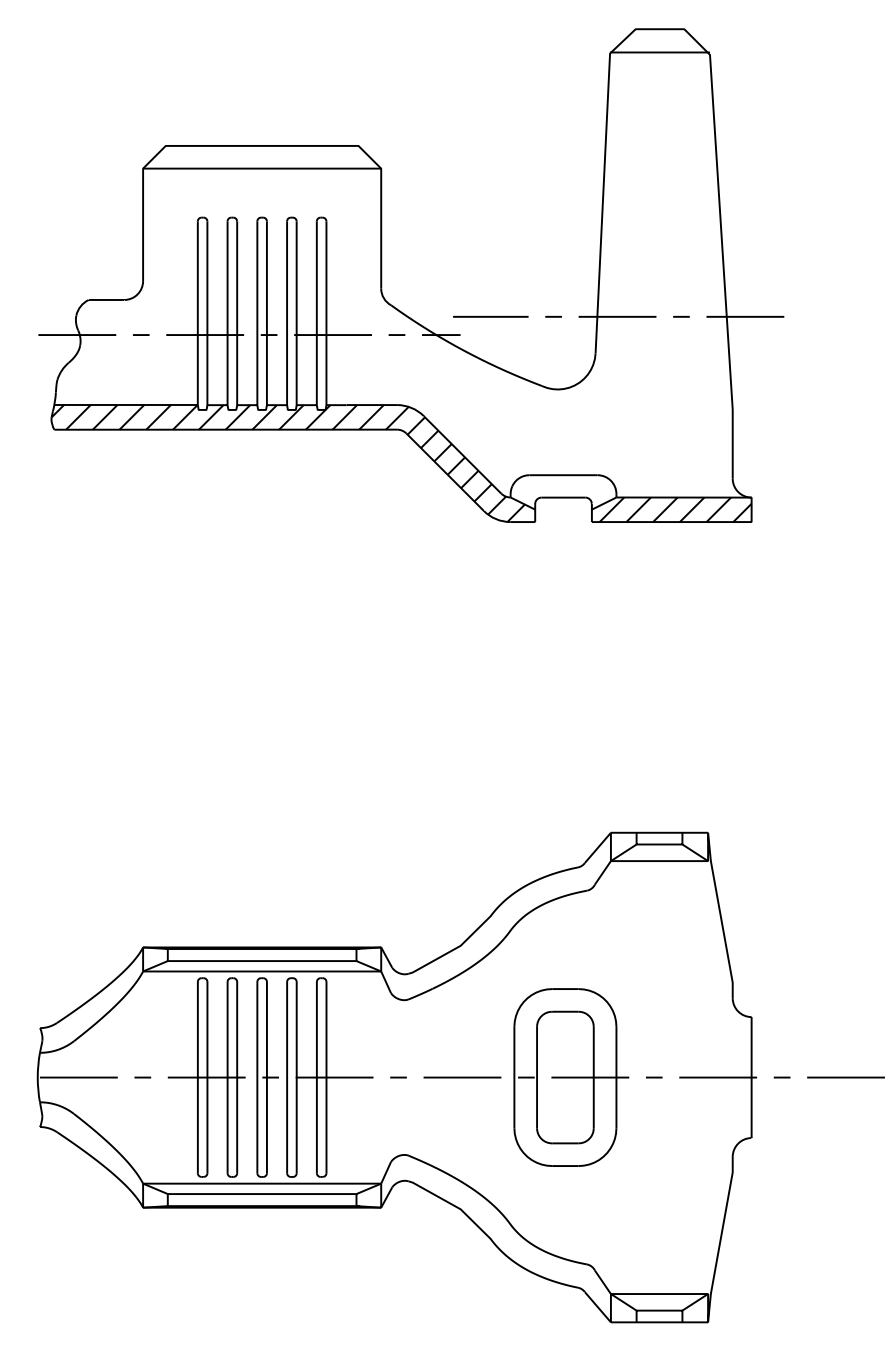


LOC	DIST	REV	DATE	BY	APPV
GT	-	A4	24AUG2004	BrM	BLM
		A5	21SEP2011	PM	CV

VERSION A  
(UNSEALED / ungedichtet)



VERSION B  
(SINGLE WIRE SEAL-SYSTEM / Einzel-Dichtungs-System)



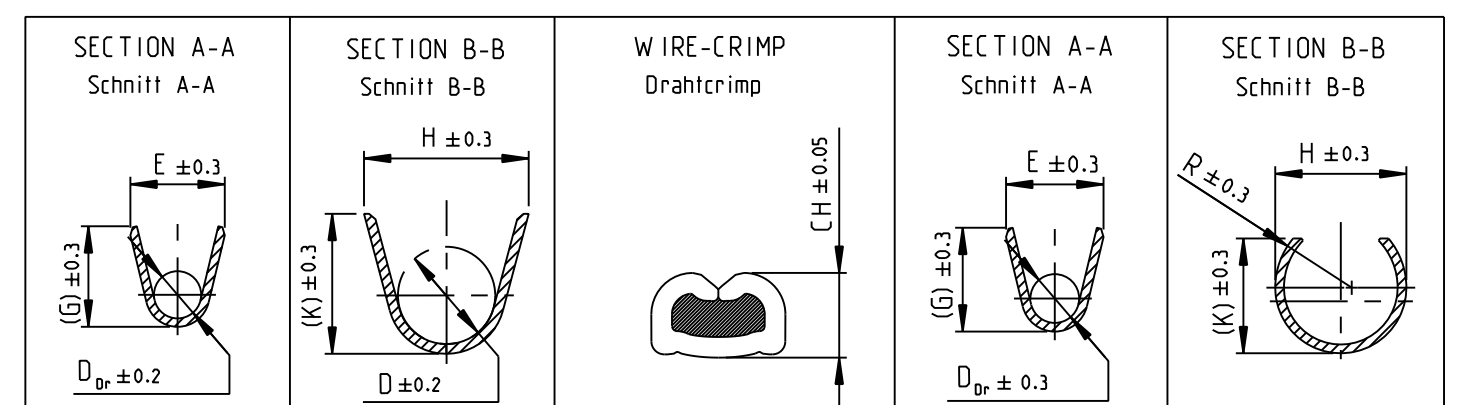
1 VERSION WITH REDUCED MATING FORCE  
Ausführung mit reduzierter Steckkraft

2 SUITABLE FOR TABS 8x1.2mm AND 9.5x1.2mm  
Geeignet für Flachstecker 8x1.2mm und 9.5x1.2mm

3 FOR CRITIZATION OF THE GAP-SIZE,  
THE MATING-FORCE HAS PRIORITY.  
Zur Beurteilung des Öffnungsmaßes  
ist die Steckkraft ausschlaggebend

4 1-3 µm TIN LAYER FOR HIGHER  
TEMPERATURE REQUIREMENTS.  
1-3 µm Zinnschicht für höhere  
Temperaturanforderungen.

A5 5 CONTACT ZONE SELECTIVE PRE-SILVER PLATED MIN. 3 µm; REST Ag FLASH  
Kontaktzone selektiv voreisilbert min. 3µm; Rest Ag Blitz



VERSION	PN STRIP FORM	REV.	PN LOOSE PIECE	MATERIAL	SURFACE	DGB WIRE RANGE	SECTION A-A	SECTION B-B	WIRE-CRIMP	SECTION A-A	SECTION B-B	APPLICATION TOOL	HAND TOOL	A	B	C	D		
							Schnitt A-A	Schnitt B-B	Drahtcrimp	Schnitt A-A	Schnitt B-B								
VERSION B	-	-	-	-	-	-	-	-	-	-	-	-	-	-	-	-	-		
	962938-1	F	962939-1	CuNiSi	vorverzinkt PRETINNED	6.0-10.0 FLK	E = 7.0 G = 7.5 D <sub>cr</sub> = 3.7	H = 13.0 K = 13.0 D = 9.5	10.0mm <sup>2</sup> = 3.82 6.0mm <sup>2</sup> = 3.20	E = 6.0 G = 7.7 D <sub>cr</sub> = 3.6	H = ∅ 11.8 K = 11.5 R = /	MQC-Applicator 2-878660-2	-	6.3	11.9	15.6	41		
	962936-1	F	962937-1	CuNiSi	vorverzinkt PRETINNED	4.0-6.0 FLK	E = 5.6 G = 5.9 D <sub>cr</sub> = 3.0	H = 13.0 K = 13.0 D = 9.5	6.0mm <sup>2</sup> = 3.08 4.0mm <sup>2</sup> = 2.74	E = 4.8 G = 6.0 D <sub>cr</sub> = 2.9	H = ∅ 11.8 K = 11.5 R = /	MQC-Applicator 2-878595-2	-	5.5	11.1	14.8	41		
962934-1	D	962935-1	CuNiSi	vorverzinkt PRETINNED	>2.5-4.0 FLK	E = 4.9 G = 5.1 D <sub>cr</sub> = 2.3	H = 13.0 K = 13.0 D = 9.5	4.0mm <sup>2</sup> = 2.71	E = 4.2 G = 5.3 D <sub>cr</sub> = 2.3	H = ∅ 11.8 K = 11.5 R = /	MQC-Applicator 2-878594-2	-	4.5	11.1	14.8	41			
VERSION A	-	-	-	-	-	-	-	-	-	-	-	-	-	-	-	-	-		
	1-962932-6	A	1-962933-6	CuNiSi	4	6.0-10.0 FLK	E = 7.0 G = 7.5 D <sub>cr</sub> = 3.7	H = 9.2 K = 10.0 D = 5.9	10.0mm <sup>2</sup> = 3.82 8.5mm <sup>2</sup> = 3.59 6.5mm <sup>2</sup> = 3.28 6.0mm <sup>2</sup> = 3.20	E = 6.0 G = 7.7 D <sub>cr</sub> = 3.6	H = 7.8 K = 8.5 R = 4.2	MQC-Applicator 2-878659-2	734533-1 (only for 10mm <sup>2</sup> )	6.3	9.0	11.8	37.5		
	1-962930-6	A	1-962931-6	CuNiSi	4	4.0-6.0 FLK	E = 5.6 G = 5.9 D <sub>cr</sub> = 3.0	H = 7.8 K = 8.1 D = 4.5	6.0mm <sup>2</sup> = 3.08 5.5mm <sup>2</sup> = 3.00 5.0mm <sup>2</sup> = 2.91 4.0mm <sup>2</sup> = 2.74	E = 4.8 G = 6.0 D <sub>cr</sub> = 2.9	H = 6.9 K = 6.95 R = 3.8	MQC-Applicator 2-878593-2	734532-1 (only for 6mm <sup>2</sup> )	5.5	7.8	10.1	37.5		
	962928-3	A5	-	CuNiSi	5	2.5-4.0 FLK	E = 4.9 G = 5.1 D <sub>cr</sub> = 2.3	H = 6.9 K = 7.2 D = 4.0	4.0mm <sup>2</sup> = 2.71 3.5mm <sup>2</sup> = 2.62 3.0mm <sup>2</sup> = 2.52 2.5mm <sup>2</sup> = 2.42	E = 4.2 G = 5.3 D <sub>cr</sub> = 2.3	H = 5.8 K = 6.35 R = 3.3	MQC-Applicator 2-878592-2	734531-1	4.5	6.8	9.1	37.5		
	962928-1	G	962929-1	CuNiSi	vorverzinkt PRETINNED	FLK	E = 4.9 G = 5.1 D <sub>cr</sub> = 2.3	H = 6.9 K = 7.2 D = 4.0	4.0mm <sup>2</sup> = 2.71 3.5mm <sup>2</sup> = 2.62 3.0mm <sup>2</sup> = 2.52 2.5mm <sup>2</sup> = 2.42	E = 4.2 G = 5.3 D <sub>cr</sub> = 2.3	H = 5.8 K = 6.35 R = 3.3	MQC-Applicator 2-878592-2	734531-1	4.5	6.8	9.1	37.5		
PN STRIP FORM	REV.	PN LOOSE PIECE	MATERIAL	SURFACE	DGB WIRE RANGE	WIRE CRIMP	INSUL.-CRIMP	WIRE CRIMP HEIGHT CH	WIRE CRIMP	INSUL.-CRIMP	APPLICATION TOOL	HAND TOOL							
Bandware		Einzelstückführung	Werkstoff	Oberfl.Sche	[mm <sup>2</sup> ]	Drahtcrimp	Isol.-Crimp	Drahtcrimp-Höhe CH	Drahtcrimp	Isol.-Crimp	Anschlag-WKZ	Handzange							
CRIMP DIMENSION (mm)												EXTRACTION TOOL							
Crimpabmessungen (mm)												Ausdrückwerkzeug							
												No.: 726552							

THIS DRAWING IS A CONTROLLED DOCUMENT.

DMN: M. Pfeilschifter 31JUL2000  
 CHK: V. Hunn 31JUL2000  
 APVD: M. Bleicher 31JUL2000

NAME: MAXI POWER TIMER FOR 1.2MM TABS  
 MAXI POWER TIMER für 1.2mm TABS

PRODUCT SPEC: 108-18047  
 APPLICATION SPEC: 114-18075

SIZE: A1  
 CAGE CODE: 00779  
 DRAWING NO: 1355050

RESTRICTED TO: -

CUSTOMER DRAWING

SCALE: 5:1 SHEET: 1 OF 1 REV: A5