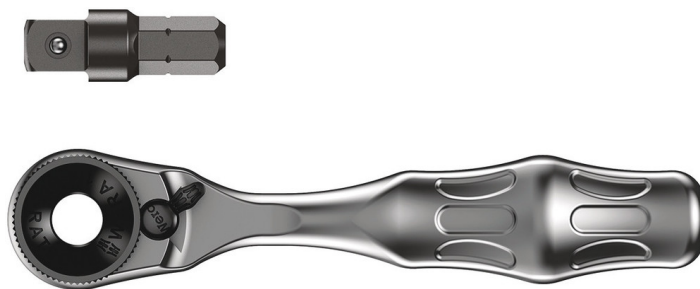


## 8001 A Bit Ratchet 1/4" SB with 1/4" drive, 2 pieces

### Zyklop Mini



<b>EAN:</b>	4013288144638	<b>Size:</b>	180x60x16 mm
<b>Part number:</b>	05073230001	<b>Weight:</b>	126 g
<b>Article number:</b>	8001 A SB	<b>Country of origin:</b>	TW
		<b>Customs tariff number:</b>	82041100

- Suitable for direct take-up of bits with 1/4" hex head drive
- Drop-forged, full-steel design
- Torque of over 65 Nm
- Fine-pitched ratchet mechanism and small return angle of 6°
- Ideal for working in confined spaces

The Wera Mini ratchet. Simple operation, even with just one hand, in confined working spaces. Drop-forged, full-steel design and fine-pitched mechanism with 60 teeth that allows a small return angle of 6° for precise working. The thumbwheel allows rapid fastening in confined situations when there is no space for ratcheting. Easy left/right switchover. Ergonomically designed ratchet head and lever. Suitable for 1/4" bit and socket take-up.

#### Web link

[http://products.wera.de/en/zyklop\\_ratchets\\_and\\_accessories\\_zyklop\\_mini\\_8001\\_a\\_sb.html](http://products.wera.de/en/zyklop_ratchets_and_accessories_zyklop_mini_8001_a_sb.html)

Wera - 8001 A SB  
05073230001 - 4013288144638

Wera Werkzeuge GmbH  
Korzter Straße 21-25  
D-42349 Wuppertal  
Tel: +49 (0)2 02 / 40 45-0  
E-Mail: [info@wera.de](mailto:info@wera.de)

# 8001 A Bit Ratchet 1/4" SB with 1/4" drive, 2 pieces



## Zyklop Mini

### Set contents:



#### 8001 A

05073999001	1 x 1/4"x87.0
05073999001	1 x 1/4"x87.0
05073999001	1 x 1/4"x87.0
05073999001	1 x 1/4"x87.0
05073999001	1 x 1/4"x87.0
05073999001	1 x 1/4"x87.0
05073999001	1 x 1/4"x87.0
05073999001	1 x 1/4"x87.0
05073999001	1 x 1/4"x87.0
05073999001	1 x 1/4"x87.0
05073999001	1 x 1/4"x87.0
05073999001	1 x 1/4"x87.0
05073999001	1 x 1/4"x87.0



#### 870/1

05136000001<sup>1)</sup> 1 x 1/4"x25

1) With friction ball; for manual nut spinner sockets

### The Zyklop Mini Ratchets

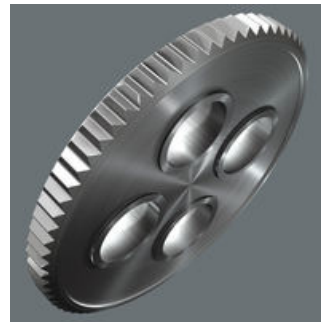


Combines elegant design with incredible resilience. Suitable for rapid fastening even in confined working situations. The Wera Zyklop Mini is applied whenever fastening with a power tool or conventional tools is impossible due to insufficient space. The Zyklop Mini 1 for the direct attachment of bits; the Zyklop Mini 2 for the direct attachment of the special Wera Zyklop sockets.



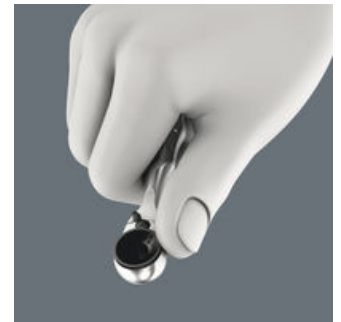
For all difficult-to-access applications.

### Small return angle



The fine tooth mechanism, with its 60 teeth, allows a small return angle of only 6° – ideal for precision work.

### Rapid screwdriving



Thumbwheel enables rapid screwdriving, even when there isn't sufficient room for ratcheting use.

### Web link

[http://products.wera.de/en/zyklop\\_ratchets\\_and\\_accessories\\_zyklop\\_mini\\_8001\\_a\\_sb.html](http://products.wera.de/en/zyklop_ratchets_and_accessories_zyklop_mini_8001_a_sb.html)

Wera - 8001 A SB  
05073230001 - 4013288144638

Wera Werkzeuge GmbH  
Korzter Straße 21-25  
D-42349 Wuppertal  
Tel: +49 (0)2 02 / 40 45-0  
E-Mail: [info@wera.de](mailto:info@wera.de)

## Zyklop Mini

### Simple direction change



Simple switching between left/right operations.

### Slim design



Its slim design makes it ideal for all particularly confined working situations.

### Is such a small tool sufficiently resilient?



The Zyklop Mini 1 can withstand at least 65 Nm. That is far more power than can normally be transferred to such a small tool.

### What parts can be connected to the Zyklop Mini 1?



Bits and sockets. Bits can be connected directly. However, a holder can be connected first and then the bit can be attached to this. This then serves as an extension with a free-turning sleeve. An adaptor e.g. Wera 870/1 is needed for sockets – ¼" hexagonal on a square drive (included in the Bit-Check and with the individual Zyklop Mini 1 in the set).

### Web link

[http://products.wera.de/en/zyklop\\_ratchets\\_and\\_accessories\\_zyklop\\_mini\\_8001\\_a\\_sb.html](http://products.wera.de/en/zyklop_ratchets_and_accessories_zyklop_mini_8001_a_sb.html)

Wera - 8001 A SB  
05073230001 - 4013288144638

Wera Werkzeuge GmbH  
Korzter Straße 21-25  
D-42349 Wuppertal  
Tel: +49 (0)2 02 / 40 45-0  
E-Mail: [info@wera.de](mailto:info@wera.de)