

Precision sine bar vices OPS-Z

Actuation via trapezoidal spindle

ORION[®]

Application:

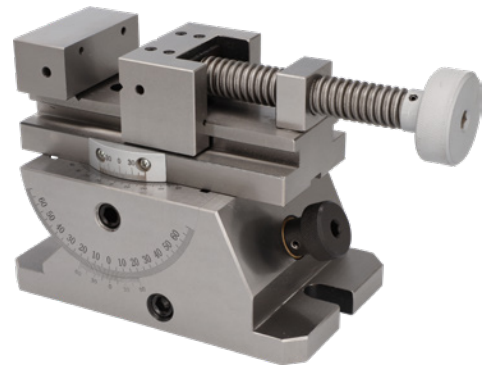
For grinding and inspection tasks.

Execution:

- Made of alloyed tool steel.
- Hardened and precision-ground.
- Adjustment via trapezoidal spindle.
- Horizontally ground vee block.
- Perpendicularity tolerance 0.005 mm/100 mm (base surface to fixed jaw clamping surfaces).
- Parallelism tolerance 0.005 mm/100 mm (base surface to upper guide plate).
- Precise angular adjustment achieved using gauge blocks.
- Angular deviation at 45° +/- 15 arc seconds.
- Hardened and polished bearing and mounting bolts with a tolerance of 0.001 mm.
- The clamp can be positively locked at any angle.

Delivery:

1 x precision sine bar vice OPS-Z



Art. no.	28620 200
Brand	ORION
Manufacturer Part Number	28620200
Prism countersunk horizontally	Yes
Jaws width	70 mm
Jaws height	30 mm
Clamping width	80 mm
Height	62 mm
Base body length	160 mm
Base body width	110 mm
Base body height	32 mm
Min./max. angle scale	0-120 Degree
Gross Weight	13.000 kg
Product Group	282

EAN

4053625621392