

3 W
DC/DC SIM
MODUL

SIM 5 DC Power Package

3 Watt Small-Input-Ranging DIL24 Compact-Serie



HN-POWER

Besondere Merkmale Features

24-Pin DIL Gehäuse	24-pin DIL package
Hoher Wirkungsgrad	High efficiency
PI oder LC-Filter	PI or LC filter
RoHS 2002/95/EC konform	RoHS 2002/95/EC conform
Metallgehäuse	Metal case

Anwendung Application

Telekommunikation	Telecommunication
Rechnersysteme	Computer applications
MSR	Control equipments
Mikroprozessorsysteme	Microprocessor systems

Technische Daten Specification

(bei 25°C Umgebungstemperatur) (at 25°C ambient temperature)

Eingangsdaten Input Specifications

Eingangsspannung	Input voltages	5V / 12 / 24 / 48 VDC, ±10%
Eingangsfiler	Input filter	PI or LC-Version

Ausgangsdaten Output Specifications

Leistung	Power	3 Watt
Wirkungsgrad	Efficiency	typ. 65%
Laständerung	Load regulation	±0.5% (±1% Dual)
Eingangsspannungsänderung	Line regulation	±0.3% (±1% Dual)
Restwelligkeit	Ripple and noise	50mV max.

Allgemeine Daten General Specifications

Betriebstemperatur	Operating temp.	-20°C... +71°C
Lagertemperatur	Storage temperature	-25°C... +125°C
MTBF	MTBF	>200,000h
Isolationsspannung	Isolation voltage	500 VDC min. (3 kVDC optional)
Max. zulässige kapazitive Last	Max. capacitive load	Single output : 2000 µF Dual output : 1000 µF

SIM 5 DC Power Package

3 Watt Small-Input-Ranging DIL24 Compact-Serie

3 W DC/DC SIM MODUL

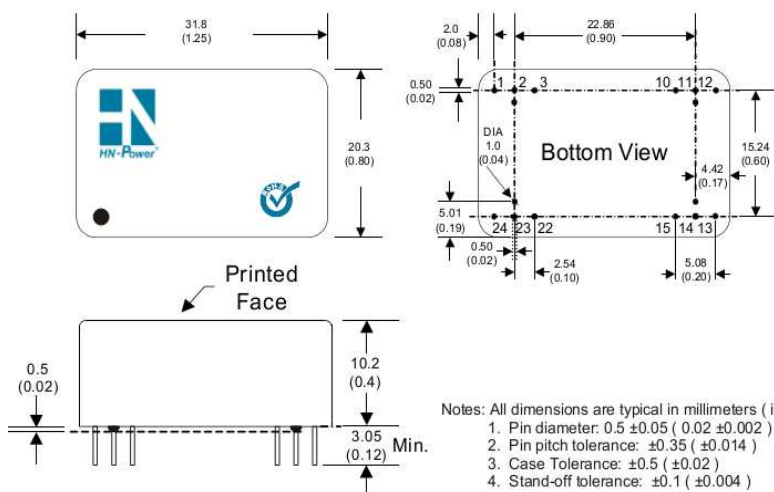
Bestell-Information / Order Information

Modell	Eingang Input VDC	Ausgang1 Output 1 V/mA	Ausgang 2 Output2 V/mA
SIM5-0505S	5	5/600	
SIM5-0512S	5	12/250	
SIM5-0515S	5	15/200	
SIM5-0512D	5	+12/125	-12/125
SIM5-0515D	5	+15/100	-15/100
SIM5-1205S	12	5/600	
SIM5-1212S	12	12/250	
SIM5-1215S	12	15/200	
SIM5-1212D	12	+12/125	-12/125
SIM5-1215D	12	+15/100	-15/100
SIM5-2405S	24	5/600	
SIM5-2412S	24	12/250	
SIM5-2415S	24	15/200	
SIM5-2412D	24	+12/125	-12/125
SIM5-2415D	24	+15/100	-15/100
SIM5-4805S	48	5/600	
SIM5-4812S	48	12/250	
SIM5-4815S	48	15/200	
SIM5-4812D	48	+12/125	-12/125
SIM5-4815D	48	+15/100	-15/100

Andere Typen und Spannungen auf Anfrage • Other models and configurations on request.

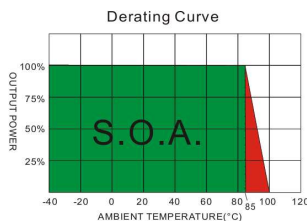
MEMO:

PIN-Belegung und Zeichnung / Pin Assignments & Drawing, mm (inch)



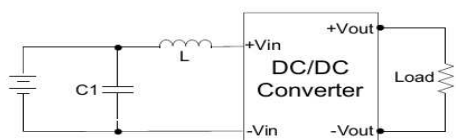
- Notes: All dimensions are typical in millimeters (inches).
1. Pin diameter: 0.5 ± 0.05 (0.02 ± 0.002)
 2. Pin pitch tolerance: ± 0.35 (± 0.014)
 3. Case Tolerance: ± 0.5 (± 0.02)
 4. Stand-off tolerance: ± 0.1 (± 0.004)

PIN CONNECTIONS		
PIN NUMBER	SINGLE	DUAL
1	+V Input	+V Input
2	N.C.	-V Output
3	N.C.	Common
10	-V Output	Common
11	+V Output	+V Output
12	-V Input	-V Input
13	-V Input	-V Input
14	+V Output	+V Output
15	-V Output	Common
22	N.C.	Common
23	N.C.	-V Output
24	+V Input	+V Input



EMI Filter

Input filter components (C1, L) are used to help meet conducted emissions requirement for the module. These components should be mounted as close as possible to the module; and all leads should be minimized to decrease radiated noise.



Single Output

C1	L
220uF/100V	12uH

Dual Output

C1	L
220uF/100V	22uH

