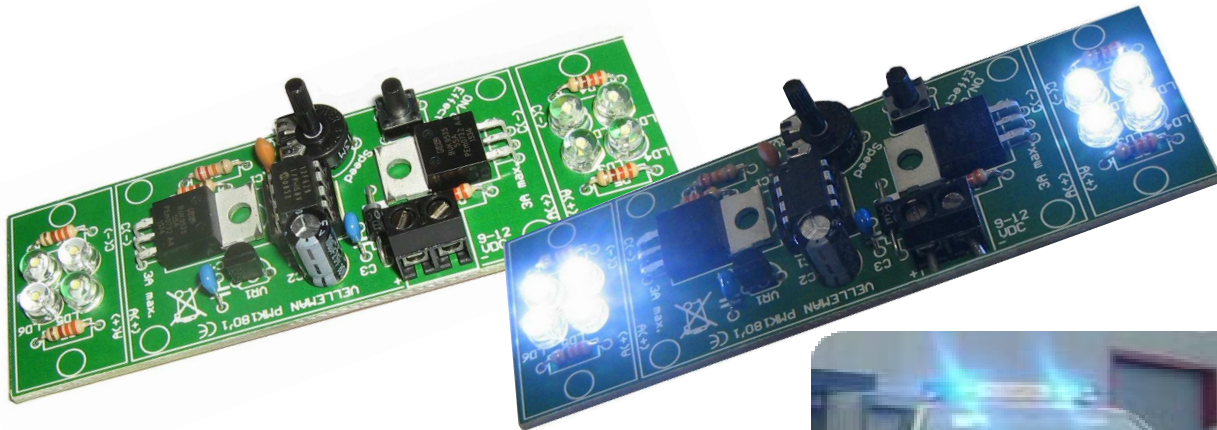




## 2 Channel Hi-Power Led Flasher

## MK180



20.000mcd

Hi-power white leds supplied

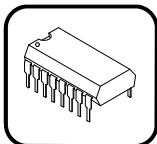


2 x 3A

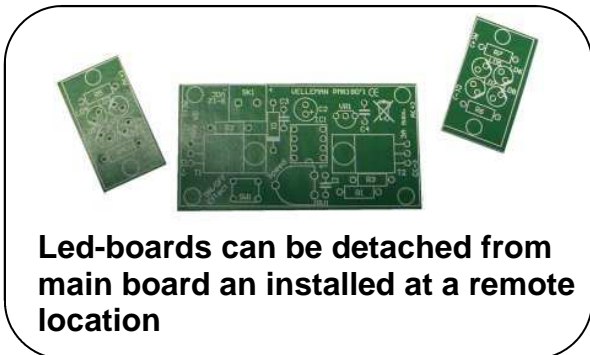
Hi-power MOSFET outputs



- 7 different flash effects
- Single-button selection
- Adjustable speed



Memory for last selected function



**Led-boards can be detached from main board an installed at a remote location**

### Applications:

#### Automotive:

Priority vehicles, car shows, etc...

#### Alarm systems:

Add a visual warning to alarm sirens

#### Attention grabber:

For displays, stores, trade shows, etc...

**Disco effect:** Strobe effect. Multiple units enhance the effect

*Use the unit with any kind of leds: low current, hi-power, led strips, clusters, etc...*



### Technical:

Supply voltage: 12V (9 to 14Vdc)

Outputs 3A/Channel max.

Dimensions: main board: 65x33mm h: 20mm  
led board: 18x33mm h: 12mm