

GN 162-NI | Connecting clamp bases

Stainless steel



- 1
- 2
- 3
- 4
- 5
- 6
- 7
- 8
- 9
- 10
- 11
- 12
- 13
- 14
- 15
- 16
- 17
- 18
-

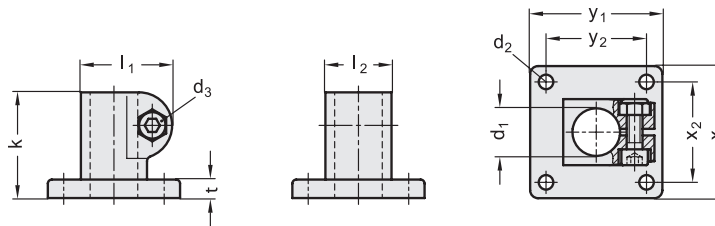
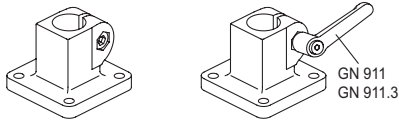
MATERIAL

Cast AISI CF-8 stainless steel, sandblasted matte finish.
AISI 304 stainless steel screw and nut.

FEATURES AND APPLICATIONS

The assembly hole of GN 162-NI connecting clamps allows an excellent match with tubes GN 990 (see page 1368).

The clamping screw d3 may be replaced by clamping kit GN 911 – GN 911.3 (see page 1372).



Code	Description	d1	d2	d3	k	l1	l2	t	x1	x2	y1	y2	d3 Clamping kit	
GN.48033	GN 162-B12-2-NI	12	5.5	M6	40	34.5	25	7	50	38	50	38	GN 911-M6-22	238
GN.48053	GN 162-B14-2-NI	14	5.5	M6	40	34.5	25	7	50	38	50	38	GN 911-M6-22	227
GN.48073	GN 162-B15-2-NI	15	5.5	M6	40	34.5	25	7	50	38	50	38	GN 911-M6-22	220
GN.48093	GN 162-B16-2-NI	16	5.5	M6	40	34.5	25	7	50	38	50	38	GN 911-M6-22	213
GN.48113	GN 162-B18-2-NI	18	5.5	M6	40	34.5	25	7	50	38	50	38	GN 911-M6-22	207
GN.48123	GN 162-B20-2-NI	20	5.5	M6	40	34.5	25	7	50	38	50	38	GN 911-M6-22	200

Connecting clamps