

6 x 6mm SMT Tactile Switches



DESCRIPTION

A range of SMT tactile switches with a variety of actuator heights.

DISTINCTIVE FEATURES

- Positive switch action.
- Normally open single pole contacts.
- 50mA contact rating
- Four terminal mounting for additional stability.
- 6 x 6mm body size.

APPLICATIONS

Suitable for general purpose use.

6 x 6
mm

SPST

SMT

50mA

Mom



ELECTRICAL SPECIFICATION

| | |
|-----------------------|--------------|
| Contact Rating | 50mA @ 12Vdc |
| Contact Configuration | SPST (NO) |
| Momentary | Off (on) |
| Insulation Resistance | 100MΩ min |
| Contact Resistance | 100MΩ max |



GENERAL SPECIFICATION

| | |
|-------------------|--|
| Type | Tactile Switch |
| Withstand Load | 3kg Applied Vertically to the Actuator |
| UNSPSC | 31922216 |
| Country of Origin | China |
| Operating Life | > 100,000 cycles |



MATERIALS

| | |
|---------|---------------------|
| Housing | PBT |
| Button | PBT |
| Cover | Nickel-plated Brass |
| Contact | Gold-plated Brass |



TERMINALS

| | |
|------|-------------------------------|
| Type | Gull Wing, Surface Mount Pads |
|------|-------------------------------|

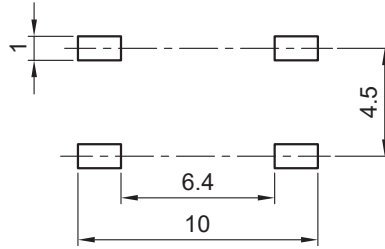
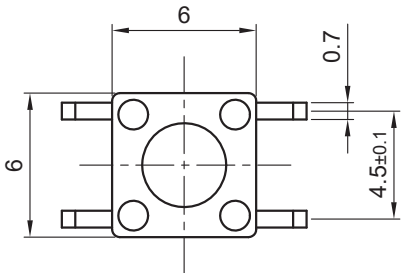


ENVIRONMENTAL/OPERATING SPECIFICATION

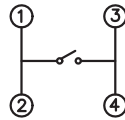
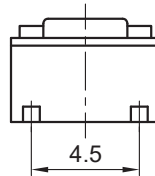
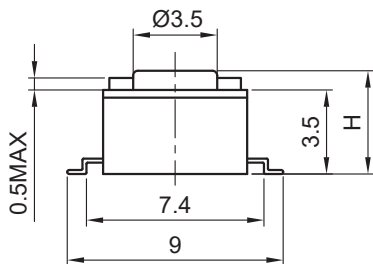
| | |
|---------------------------|--|
| Wave Operating Temp Range | -25°C to +70°C |
| Wave Soldering | Recommend Solder Temperature 500°F (260°C) Max 5 seconds, Subject to 1.6mm OCB Thickness. |
| Hand Soldering | Hand Soldering Using Soldering Iron of 30 Watts Controlled at 608°F (320°C) Approximately 2 Seconds. |



DIMENSIONS/DRAWINGS



Recommend PCB layout
Tolerance:±0.05



Circuit diagram



OPTIONS (MOQ MAY APPLY)

| | |
|-----------------|--|
| Body Colour | Brown |
| Actuator Colour | Brown, Salmon, Red |
| Operating Force | 130, 160, 170, 250, 320 |
| Profile Height | 5.3mm, 5.5mm, 6.0mm, 7.3mm, 7.5mm, 7.8mm, 8.0mm, 8.5mm, 9.0mm, 10.0mm, 10.5mm, 11.0mm, 12.0mm, 12.5mm, 15.0mm, 17.0mm. |
| Packaging | Tape and Reel |



PART NUMBER TABLE

| Part Number | Profile Height (H) (mm) | Operating Force (gf) | Reel Size | Housing Colour | Actuator Colour | EAN Nnumber |
|-------------|-------------------------|----------------------|-----------|----------------|-----------------|---------------|
| 78-3815 | 4.3 | 130 | 1000 | Black | Black | 5053556011445 |
| 78-3816 | 5.0 | 130 | 1000 | Black | Black | 5053556011452 |
| 78-3817 | 7.0 | 130 | 800 | Black | Black | 5053556011469 |
| 78-3818 | 9.5 | 130 | 600 | Black | Black | 5053556011476 |
| 78-3819 | 4.3 | 160 | 1000 | Black | Black | 5053556011483 |
| 78-3821 | 5.0 | 160 | 1000 | Black | Black | 5053556011490 |
| 78-3823 | 7.0 | 160 | 800 | Black | Black | 5053556011506 |
| 78-3825 | 9.5 | 160 | 600 | Black | Black | 5053556011513 |
| 78-3827 | 4.3 | 250 | 1000 | Black | Black | 5053556011520 |
| 78-3828 | 5.0 | 250 | 1000 | Black | Black | 5053556011537 |
| 78-3829 | 7.0 | 250 | 800 | Black | Black | 5053556011544 |
| 78-3831 | 9.5 | 250 | 600 | Black | Black | 5053556011551 |

For further information on pricing, delivery, and long-term stock agreements please get in touch with your local business development contact, telephone our main office on **01206 838000** or email **Sales@Rapidonline.com**.



Tried & trusted technology

Important Notice: This data sheet and its contents (the "Information") belong to Rapid Electronics Limited or are licensed to it. No licence is granted for the use of it other than for information purposes in connection with the products to which it relates. No licence of any intellectual property rights is granted. The Information is subject to change without notice and replaces all data sheets previously supplied. The Information supplied is believed to be accurate but Rapid Electronics Limited assumes no responsibility for its accuracy or completeness, any error in or omission from it or for any use made of it. Users of this data sheet should check for themselves the Information and the suitability of the products for their purpose and not make any assumptions based on information included or omitted. Liability for loss or damage resulting from any reliance on the Information or use of it (including liability resulting from negligence or where Rapid Electronics Limited were aware of the possibility of such loss or damage arising) is excluded. This will not operate to limit or restrict Rapid Electronics Limited's liability for death or personal injury resulting from its negligence.