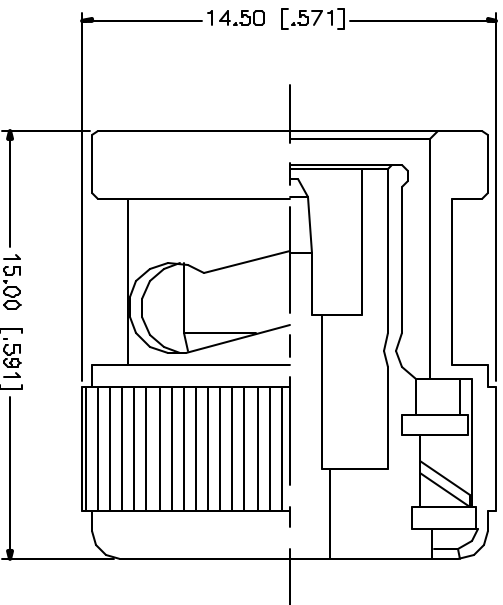


REV.	DATE	DESCRIPTION
NC	04/21/97	INITIAL RELEASE
A	05/18/05	UPDATE DRAWING FORMAT



UNLESS OTHERWISE SPECIFIED DIMENSIONS ARE IN INCHES AND FOR DIMENSIONS RETAIN THE VALUE				UNLESS OTHERWISE SPECIFIED TOLERANCES FOR MILLING ARE:				UNLESS OTHERWISE SPECIFIED DIMENSIONS FOR TURNING ARE:											
8																			
7																			
6																			
5																			
4																			
3	CONTACT PIN	BRASS	COLD		1														
2	INSULATOR	TEFLON	NATURAL		1														
1	BODY	BRASS	NICKEL		1														
DESCRIPTION		MATERIAL		FINISH		QTY		UNLESS OTHERWISE SPECIFIED DIMENSIONS ARE IN INCHES AND FOR DIMENSIONS RETAIN THE VALUE UNLESS OTHERWISE SPECIFIED TOLERANCES FOR MILLING ARE: 0.5 - Bore ± 0.20mm B - 30mm ± 0.40mm 30 - 120mm ± 0.50mm UNLESS OTHERWISE SPECIFIED DIMENSIONS FOR TURNING ARE: .020 - .315 = ± 0.007" .316 - 1.180 = ± 0.016" 1.180 - 4.724 = ± 0.020" DO NOT SCALE DRAWING											
				APPROVALS				DATE											
DRAWN				G.R.S.				05/18/05											
CHECKED																			
ISSUED																			
SHEET				1 OF 1															
DWG. FILE								C:/202/2202114.DWG											
DWG. NO.				202114.DWG				REV. A				SIZE A				SCALE NA			
PART DESCRIPTION								BNC SHORT PLUG											
PART NO.								202114											
Amphenol Connex																			