

1. General

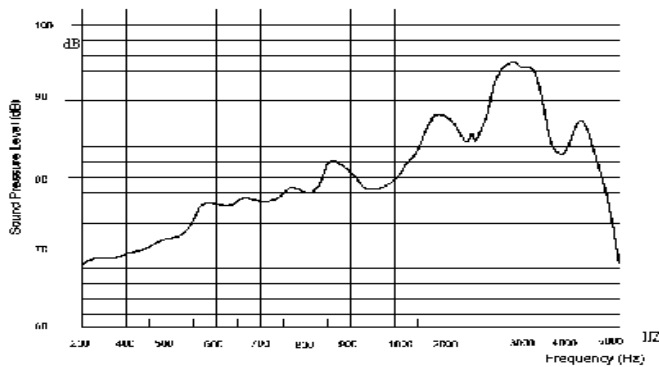
operating temperature:	-40°C to +85°C	component weight [g]:	1
storage temperature:	-40°C to +85°C		
contact:	SMD	housing color:	black
packaging:	tor	IP rating:	n.a.
ESD conform	<input checked="" type="checkbox"/>	RoHs conform:	yes
remark:	Housing material LCP		



2. Electrical and acoustical specification

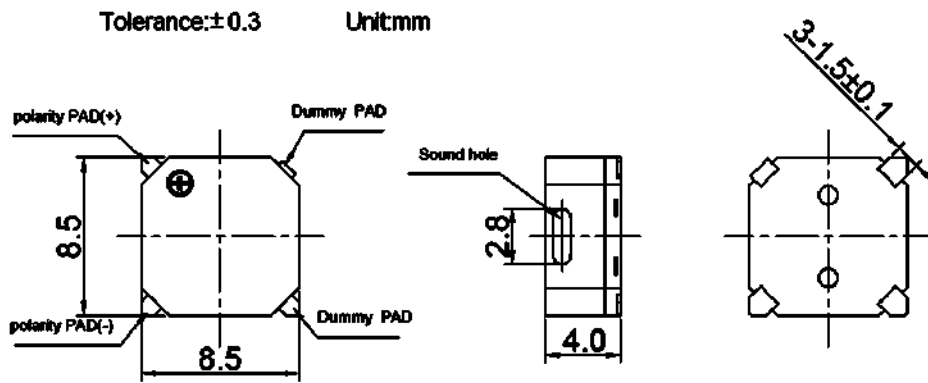
DC resistance [ $\Omega$ ]		15 ± 3
Resonance frequency [Hz]		2730
Rated voltage [V]	$V_{op}$	3.6
Operating voltage [V]	$V_{op}$	2 - 4
SPL [dBA]:	<i>in 10 cm distance, 2730 Hz, 3.6 V<sub>op</sub>, 50% duty cycle, square wave</i>	
		≥ 87
Current consumption [mA]	<i>2730 Hz, 3.6 V<sub>op</sub>, 50% duty cycle, square wave</i>	
		≤ 100
Remark:		

Frequency curve

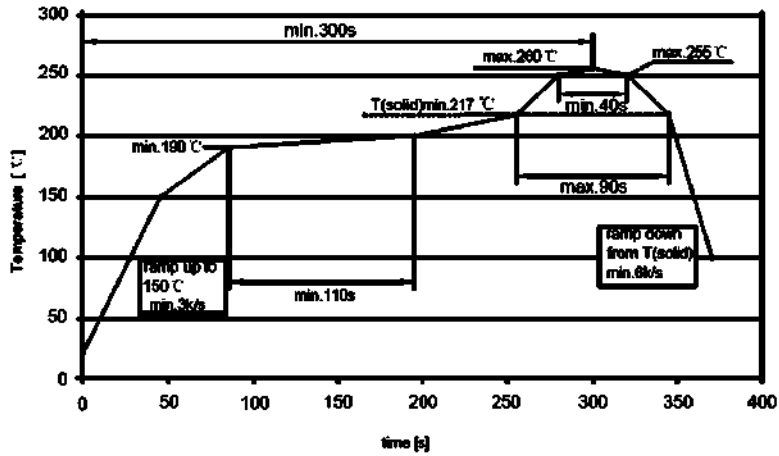


<b>GREWUS</b>		dimensions without tolerance:	± 0.2	scale:	
Designed by:	Ralf Hinnerichs	24.02.2009	part number: <b>BME8504S-03A</b>	index:	Date:
Released by:	Ralf Hinnerichs	24.02.2009		<b>A</b>	24.02.2009
drawing number: <b>398687086</b>			<b>Buzzer</b>	Page 1 of 3	

3. Component drawing

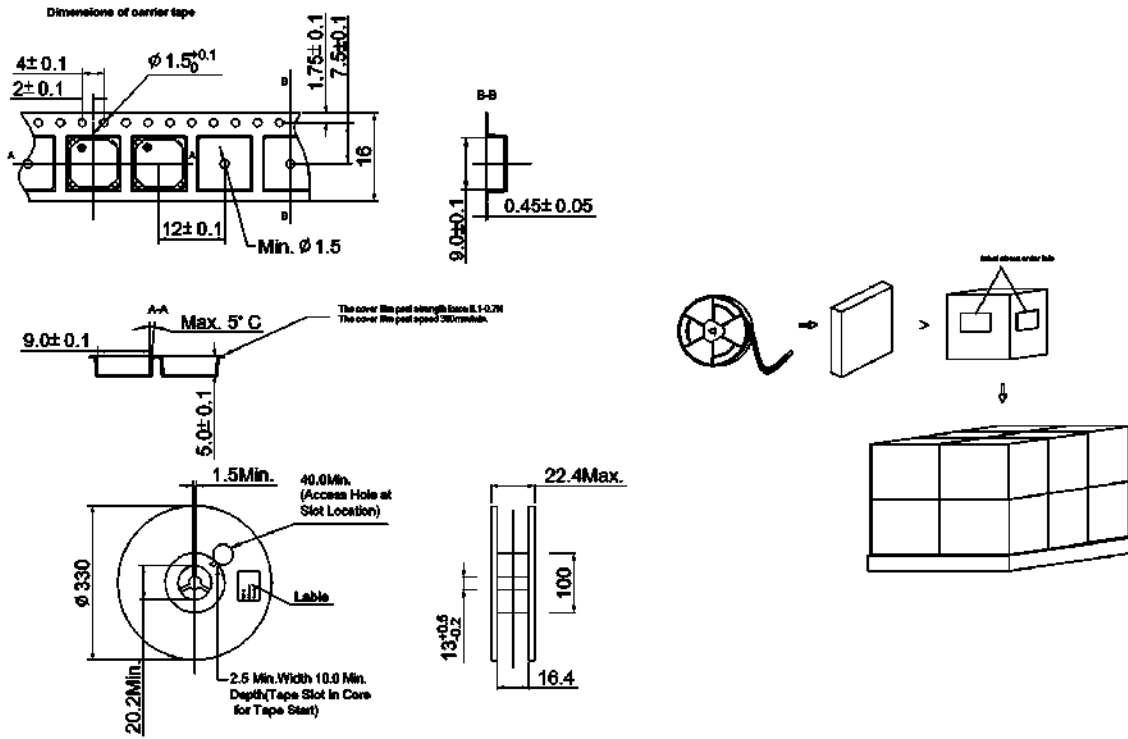


Temperature profile for a lead-free reflow process



<b>GREWUS</b>		dimensions without tolerance: ± 0.2	scale:	
Designed by: Ralf Hinnerichs	24.02.2009	part number: <b>BME8504S-03A</b>	index:	Date:
Released by: Ralf Hinnerichs	24.02.2009		<b>A</b>	24.02.2009
drawing number: <b>398687086</b>		<b>Buzzer</b>		Page 2 of 3

4. Packaging drawing



Carton

Size: 38 x 28 x 37 cm

Smallest unit:

Quantity: 5000 pcs /b carton

quantity smallest unit: 1000 pcs / reel

Weight:

further packaging information: 5 reels / carton / 12 cartons / tray

<b>GREWUS</b>		dimensions without tolerance: $\pm 0.2$	scale:	
Designed by: Ralf Hinnerichs	24.02.2009	part number:	index:	Date:
Released by: Ralf Hinnerichs	24.02.2009	<b>BME8504S-03A</b>	<b>A</b>	24.02.2009
drawing number: <b>398687086</b>		<b>Buzzer</b>		Page 3 of 3