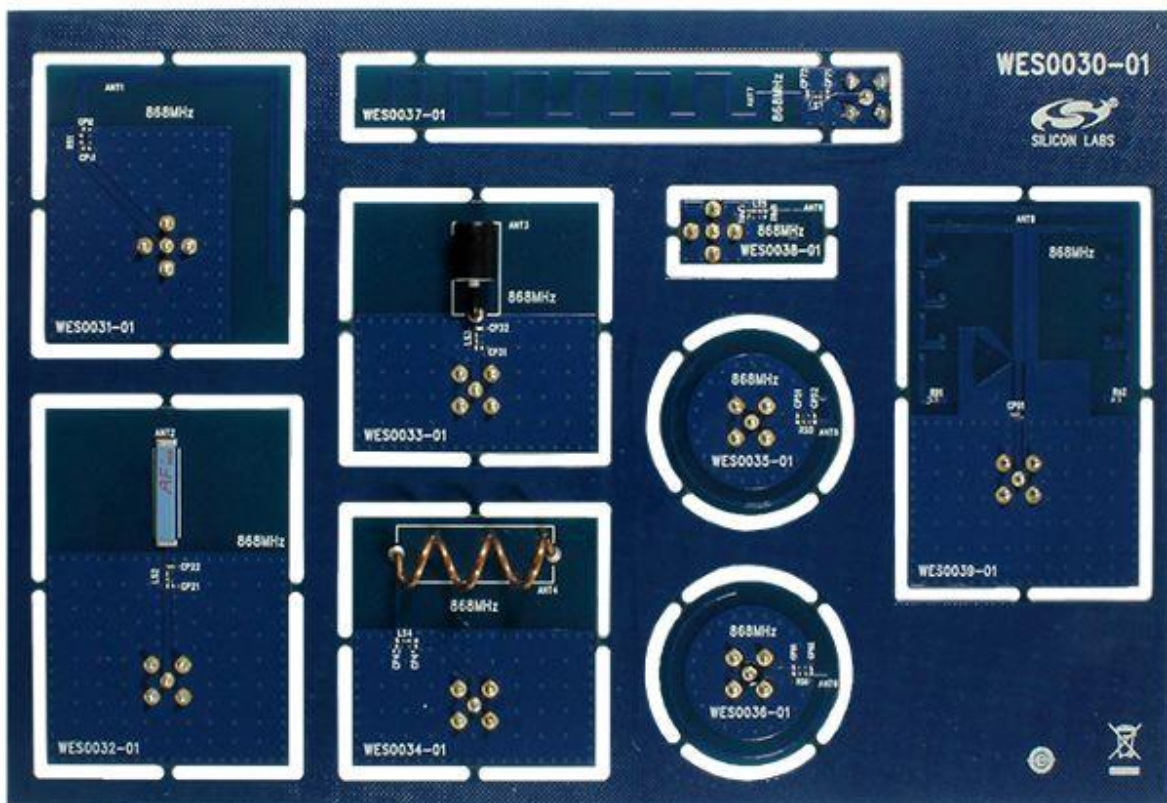




Description: 868 MHz Antenna Matrix Development Kit

Part Number: MSC-AMS868-EK



The antenna matrix is intended to simplify antenna design and selection. The antenna designs can be copied into any design after evaluation of various types of antennas in the matrix for the 868 MHz frequency band.

The MSC-AMSxxx-EK kit contains a panel of nine antenna designs. Each antenna on the panel is unique and can be individually evaluated with a separately orderable Silabs™ [RF Radio Board](#). The RF Radio Boards are available as part of EZRadio® and EZRadioPRO® development kits and individually as well. The panel contains a mix of PCB, chip and wire antenna options for a specific frequency band.

Complete measurement reports and a selection guide are available for each antenna matrix kit. In addition, an antenna design guide will be available with information on how to incorporate the antenna matrix designs into the end product which may require minor changes due to specific form factors and placement of components.

The antenna matrix can be used with any Silabs [RF Radio Board](#) that has an SMA connector.

Antenna Matrix Development Kit Contents

- Antenna Matrix Board
- SMA Adapter (To connect the SMA on the antenna board to the SMA on the RF Pico Board)