

LT3763

High Power Constant Current,
Constant Voltage Synchronous
Buck Controller

DESCRIPTION

Demonstration circuit 1831A is a high power constant current, constant voltage synchronous buck controller featuring the [LT®3763](#). The input of the demo board is up to 60V. The output is optimized for 10V, 10A as a LED driver. As an LED driver, the output current is being regulated until the output voltage reaches a programmed voltage limit. The voltage limit on the demo board is set to around 15V by R11 and R14. The load to be used with this demo board is high current LEDs or laser diodes. Smaller LEDs may not be able to handle the high current, even for a short period of time. It is necessary to mount the LED load on a proper heat sink. A fan may become necessary to avoid exceeding LED’s maximum temperature rating.

The input voltage range of the LT3763 itself is 6V to 60V. The demo board input range is 12V to 60V, therefore, the demo board utilizes 80V MOSFETs. If an application has a maximum input voltage of 48V, 60V MOSFETs such as BSC100N06LS3, can be used for better efficiency at lower voltage range. The typical efficiency of the demo board is 95% from a 24V input to a 10V, 10A load. The lower the input voltage, the higher the efficiency tends to be for a given load. At an output power level of 100W, even a one percent efficiency improvement is a big advantage in minimizing temperature rise. If an efficiency measurement is needed in an application, the output voltage must be measured at the output capacitors instead of at the LED load. This prevents cable loss from being counted as a loss of the board. The LT3763 turns off unnecessary circuits during PWM off period to minimize power losses. As a result, efficiency in many PWM dimming applications is high.

In most applications, input voltage reaching the maximum specification is a transient event. However, a fan helps the circuit to stay cool if running at or near peak input voltage at full load in steady state. If running in steady state at or near maximum input voltage and full load is required, please contact applications engineering.

The demo circuit 1831A achieves fast current rise time from 0A to 10A. To see the real rise time, connecting wires between the LED and the board should be as short as possible to minimize the wire inductance and resistance. The cathode of the LED should return to LED– with R17 populated with a resistor in a few mΩ. It is recommended to measure the voltage on R17 with a short 50Ω coax cable directly into a BNC connector on the oscilloscope. The current can be calculated from the measured voltage. A current probe adds more delays to the rise time so using a current probe is not recommended. If fast rise time is not required, the cathode of the LED can be connected to GND as shown in Figure 2.

The LT3763 data sheet gives a complete description of the part, operation and application information. The data sheet must be read in conjunction with this quick start guide for demo circuit 1831A.

Design files for this circuit board are available.

All registered trademarks and trademarks are the property of their respective owners.

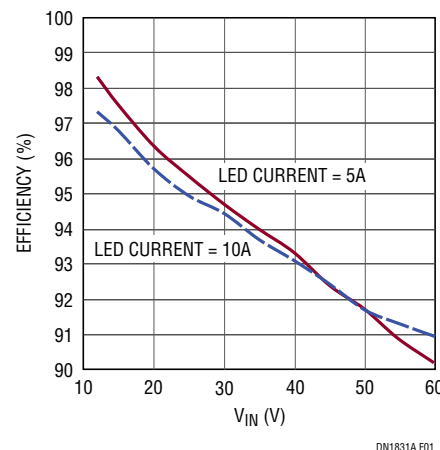


Figure 1. Demo Board Efficiency

PERFORMANCE SUMMARY Specifications are at $T_A = 25^\circ\text{C}$

SYMBOL	PARAMETER	CONDITIONS	MIN	TYP	MAX	UNITS
V_{IN}	Input Supply Range		12		60	V
V_{OUT}	Maximum Output Voltage			15		V
I_{OUT}	Output Current		9.4	10	10.6	A
f_{SW}	Switching Frequency		380	430	480	kHz
EFF	Efficiency at DC	$I_{OUT} = 10\text{A}, V_{OUT} = 10\text{V}$		95		%

QUICK START PROCEDURE

Demonstration circuit 1831A is easy to set up to evaluate the performance of the LT3763. Refer to Figure 2 for proper measurement equipment setup and follow the procedure below:

1. With power off, connect the input power supply to V_{IN} and GND. Note: make sure V_{IN} is below 60V.
2. With power off, connect the LED load to V_{OUT} and GND (without PWM dimming) or V_{OUT} and LED- (with PWM dimming).
3. When measuring input and output voltage, measure at test points TP1 to TP4.
4. Turn on the power at the input.
5. Carefully evaluate other design parameters as needed.

QUICK START PROCEDURE

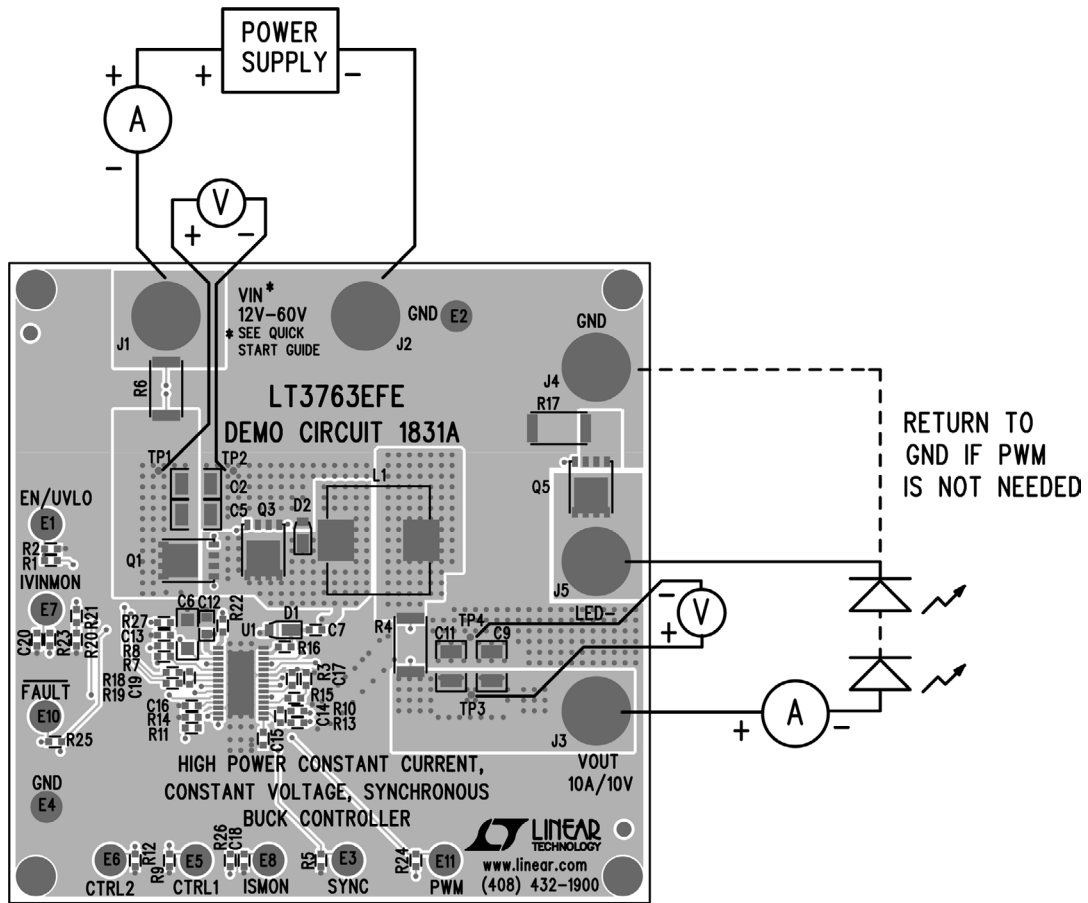


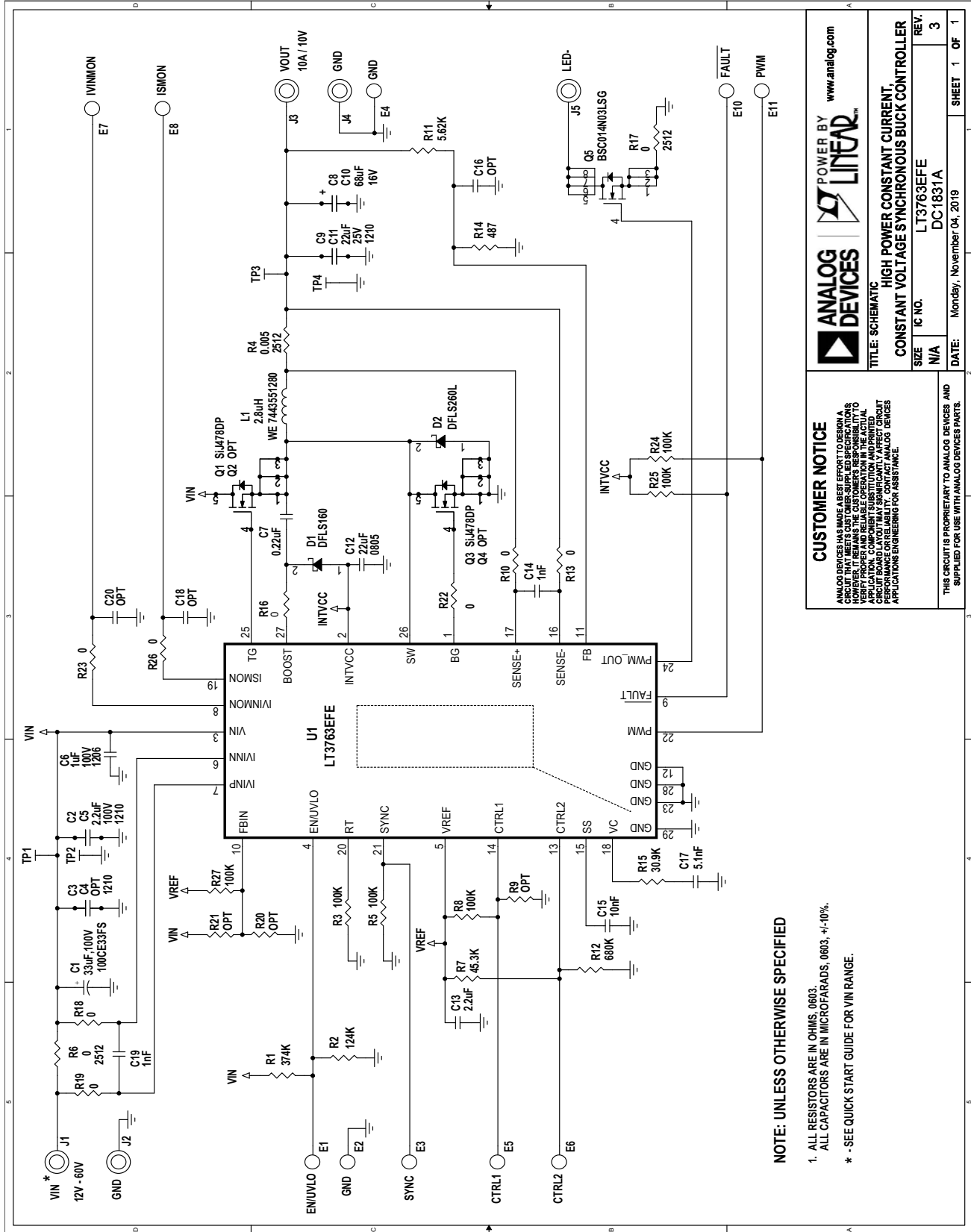
Figure 2. Proper Measurement Equipment Setup

DEMO MANUAL DC1831A

PARTS LIST

ITEM	QTY	REFERENCE	PART DESCRIPTION	MANUFACTURER/PART NUMBER
Required Circuit Components				
1	1	C1	Cap., Alum, 33 μ F, 100V, 10.3x10.3	Sun Elect., 100CE33FS
2	2	C2, C5	Cap., X7R, 2.2 μ F, 100V, 10%, 1210	Murata, GRM32ER72A225KE35L
3	1	C6	Cap., X7R, 1 μ F, 100V, 10%, 1206	Murata, GRM31CR72A105KA01L
4	1	C7	Cap., X7R, 0.22 μ F, 10V, 10%, 0603	Murata, GRM188R71A224KA01D
5	2	C8, C10	Cap., POSCAP, 68 μ F, 16V	Sanyo, 16TQC68MYF
6	2	C9, C11	Cap., X7R, 22 μ F, 25V, 10%, 1210	Murata, GRM32ER71E226KE15L
7	1	C12	Cap., X5R, 22 μ F, 6.3V, 10%, 0805	Murata, GRM21BR60J226ME39L
8	1	C13	Cap., X5R, 2.2 μ F, 50V, 10%, 0603	Murata, GRM188R61H225KE11D
9	2	C14, C19	Cap., X7R, 1000pF, 50V, 10%, 0603	AVX, 06035C102KAT2A
10	1	C15	Cap., X7R, 10nF, 16V, 0603	Murata, GRM188R71C103KA01D
11	1	C17	Cap., X7R, 5.1nF, 10%, 25V, 0603	Murata, GRM188R71E512KA01
12	1	D1	1.0A Schottky Diode, DFSL160	Diodes/Zetex, DFSL160-7
13	1	D2	2.0A Schottky Diode, DFSL260	Diodes/Zetex, DFSL260-7
14	1	L1	Inductor, 2.8 μ H	WE., 7443551280
15	2	Q1, Q3	MOSFET	Vishay, SIJ478DP-T1-GE3
16	1	Q5	MOSFET	Infineon, BSC014N03LS G
17	1	R1	Res., Chip, 374k, 1%, 0603	Vishay, CRCW0603374KFKEA
18	1	R2	Res., Chip, 124k, 1%, 0603	Vishay, CRCW0603124KFKEA
19	6	R3, R5, R8, R24, R25, R27	Res., Chip, 100k, 1%, 0603	Vishay, CRCW0603100KFKEA
20	1	R4	Res., Chip, 0.005 Ω , 1W, 1%, 2512	Vishay, WSL25125L000FEA
21	1	R7	Res., Chip, 45.3k, 1%, 0603	Vishay, CRCW060345K3FKEA
22	1	R11	Res., Chip, 5.62k, 1%, 0603	Vishay, CRCW06035K62FKEA
23	1	R12	Res., Chip, 680K, 1%, 0603	Vishay, CRCW0603680KFKEA
24	1	R14	Res., Chip, 487 Ω , 1%, 0603	Vishay, CRCW0603487RFKEA
25	1	R15	Res., Chip, 30.9k, 1%, 0603	Vishay, CRCW060330K9FKEA
26	1	U1	I.C. LT3763EFE, 20-Pin TSSOP	Linear Tech., LT3763EFE
Additional Demo Board Circuit Components				
1	0	C3, C4	Cap., 1210, Opt	
2	0	C16, C18, C20	Cap., 0603, Opt	
3	0	Q2, Q4	MOSFET, Opt	
4	2	R6, R17	Res., Chip, 0 Ω , 2512	Vishay, CRCW25120000Z0EGHP
5	0	R9, R20, R21	Res., 1206, Opt	
6	8	R10, R13, R16, R18, R19, R22, R23, R26	Res., Chip, 0 Ω , 0603	Vishay, CRCW06030000Z0ED
Hardware: For Demo Board Only				
1	5	J1, J2, J3, J4, J5	Jack, Banana	Keystone, 575-4
2	10	E1-E8, E10, E11	Testpoint, Turret, 0.094"	Mill-Max, 2501-2-00-80-00-00-07-0
3	4		Stand-Off, Nylon 0.5" tall	Keystone, 8833 (Snap On)

SCHEMATIC DIAGRAM



CUSTOMER NOTICE
 ANALOG DEVICES HAS MADE A BEST EFFORT TO DESIGN A CIRCUIT THAT MEETS CUSTOMER-SUPPLIED SPECIFICATIONS AND DOES NOT VIOLATE ANY APPLICABLE REGULATORY REQUIREMENTS. HOWEVER, THE USER MUST VERIFY PROPER AND RELIABLE OPERATION IN THE ACTUAL APPLICATION. COMPONENT SUBSTITUTION AND PRINTED CIRCUIT BOARD MANUFACTURING VARIATIONS MAY AFFECT PERFORMANCE, RELIABILITY. CONTACT ANALOG DEVICES APPLICATIONS ENGINEERING FOR ASSISTANCE.

ANALOG DEVICES | POWER BY **LINEAR**™ | www.analog.com

TITLE: SCHEMATIC
CONSTANT CURRENT SYNCHRONOUS BUCK CONVERTER

SIZE	N/A	REV.	3
IC NO.	LT3763EFE		
DATE	Monday, November 04, 2019		

THIS CIRCUIT IS PROPRIETARY TO ANALOG DEVICES AND SUPPLIED FOR USE WITH ANALOG DEVICES PARTS.

SHEET 1 OF 1

NOTE: UNLESS OTHERWISE SPECIFIED

1. ALL RESISTORS ARE IN OHMS, 0603.
- ALL CAPACITORS ARE IN MICROFARADS, 0603, +/-10%.
- * - SEE QUICK START GUIDE FOR VIN RANGE.



ESD Caution

ESD (electrostatic discharge) sensitive device. Charged devices and circuit boards can discharge without detection. Although this product features patented or proprietary protection circuitry, damage may occur on devices subjected to high energy ESD. Therefore, proper ESD precautions should be taken to avoid performance degradation or loss of functionality.

Legal Terms and Conditions

By using the evaluation board discussed herein (together with any tools, components documentation or support materials, the "Evaluation Board"), you are agreeing to be bound by the terms and conditions set forth below ("Agreement") unless you have purchased the Evaluation Board, in which case the Analog Devices Standard Terms and Conditions of Sale shall govern. Do not use the Evaluation Board until you have read and agreed to the Agreement. Your use of the Evaluation Board shall signify your acceptance of the Agreement. This Agreement is made by and between you ("Customer") and Analog Devices, Inc. ("ADI"), with its principal place of business at One Technology Way, Norwood, MA 02062, USA. Subject to the terms and conditions of the Agreement, ADI hereby grants to Customer a free, limited, personal, temporary, non-exclusive, non-sublicensable, non-transferable license to use the Evaluation Board FOR EVALUATION PURPOSES ONLY. Customer understands and agrees that the Evaluation Board is provided for the sole and exclusive purpose referenced above, and agrees not to use the Evaluation Board for any other purpose. Furthermore, the license granted is expressly made subject to the following additional limitations: Customer shall not (i) rent, lease, display, sell, transfer, assign, sublicense, or distribute the Evaluation Board; and (ii) permit any Third Party to access the Evaluation Board. As used herein, the term "Third Party" includes any entity other than ADI, Customer, their employees, affiliates and in-house consultants. The Evaluation Board is NOT sold to Customer; all rights not expressly granted herein, including ownership of the Evaluation Board, are reserved by ADI. CONFIDENTIALITY. This Agreement and the Evaluation Board shall all be considered the confidential and proprietary information of ADI. Customer may not disclose or transfer any portion of the Evaluation Board to any other party for any reason. Upon discontinuation of use of the Evaluation Board or termination of this Agreement, Customer agrees to promptly return the Evaluation Board to ADI. ADDITIONAL RESTRICTIONS. Customer may not disassemble, decompile or reverse engineer chips on the Evaluation Board. Customer shall inform ADI of any occurred damages or any modifications or alterations it makes to the Evaluation Board, including but not limited to soldering or any other activity that affects the material content of the Evaluation Board. Modifications to the Evaluation Board must comply with applicable law, including but not limited to the RoHS Directive. TERMINATION. ADI may terminate this Agreement at any time upon giving written notice to Customer. Customer agrees to return to ADI the Evaluation Board at that time. LIMITATION OF LIABILITY. THE EVALUATION BOARD PROVIDED HEREUNDER IS PROVIDED "AS IS" AND ADI MAKES NO WARRANTIES OR REPRESENTATIONS OF ANY KIND WITH RESPECT TO IT. ADI SPECIFICALLY DISCLAIMS ANY REPRESENTATIONS, ENDORSEMENTS, GUARANTEES, OR WARRANTIES, EXPRESS OR IMPLIED, RELATED TO THE EVALUATION BOARD INCLUDING, BUT NOT LIMITED TO, THE IMPLIED WARRANTY OF MERCHANTABILITY, TITLE, FITNESS FOR A PARTICULAR PURPOSE OR NON-INFRINGEMENT OF INTELLECTUAL PROPERTY RIGHTS. IN NO EVENT WILL ADI AND ITS LICENSORS BE LIABLE FOR ANY INCIDENTAL, SPECIAL, INDIRECT, OR CONSEQUENTIAL DAMAGES RESULTING FROM CUSTOMER'S POSSESSION OR USE OF THE EVALUATION BOARD, INCLUDING BUT NOT LIMITED TO LOST PROFITS, DELAY COSTS, LABOR COSTS OR LOSS OF GOODWILL. ADI'S TOTAL LIABILITY FROM ANY AND ALL CAUSES SHALL BE LIMITED TO THE AMOUNT OF ONE HUNDRED US DOLLARS (\$100.00). EXPORT. Customer agrees that it will not directly or indirectly export the Evaluation Board to another country, and that it will comply with all applicable United States federal laws and regulations relating to exports. GOVERNING LAW. This Agreement shall be governed by and construed in accordance with the substantive laws of the Commonwealth of Massachusetts (excluding conflict of law rules). Any legal action regarding this Agreement will be heard in the state or federal courts having jurisdiction in Suffolk County, Massachusetts, and Customer hereby submits to the personal jurisdiction and venue of such courts. The United Nations Convention on Contracts for the International Sale of Goods shall not apply to this Agreement and is expressly disclaimed.