



SERIES 260HC CARD LOK

RECOMMENDED GAP WIDTH

PCB + 7.62 mm (.300 in)

RECOMMENDED TORQUE

68 N-cm (6 in-lbs)
With "L" option 90 N-cm (8 in-lbs)

WEIGHT

.95 g/cm (.085 oz/in)

MATERIALS AND FINISH

BODIES AND WEDGES

Material: Aluminum Alloy 6061-T6 per ASTM-B221 or AMS-QQ-A-200/8
Finish: See finish table on opposite page

SHAFT

Material: Aluminum Alloy 6061-T6 per ASTM-B221 or AMS-QQ-A-200/8
Finish: See finish table on opposite page

SCREW

.09-in. or 2.5-mm hex. socket head
Material: 300 series stainless steel with dry film lube per MIL-L-46010

LOCK WASHER

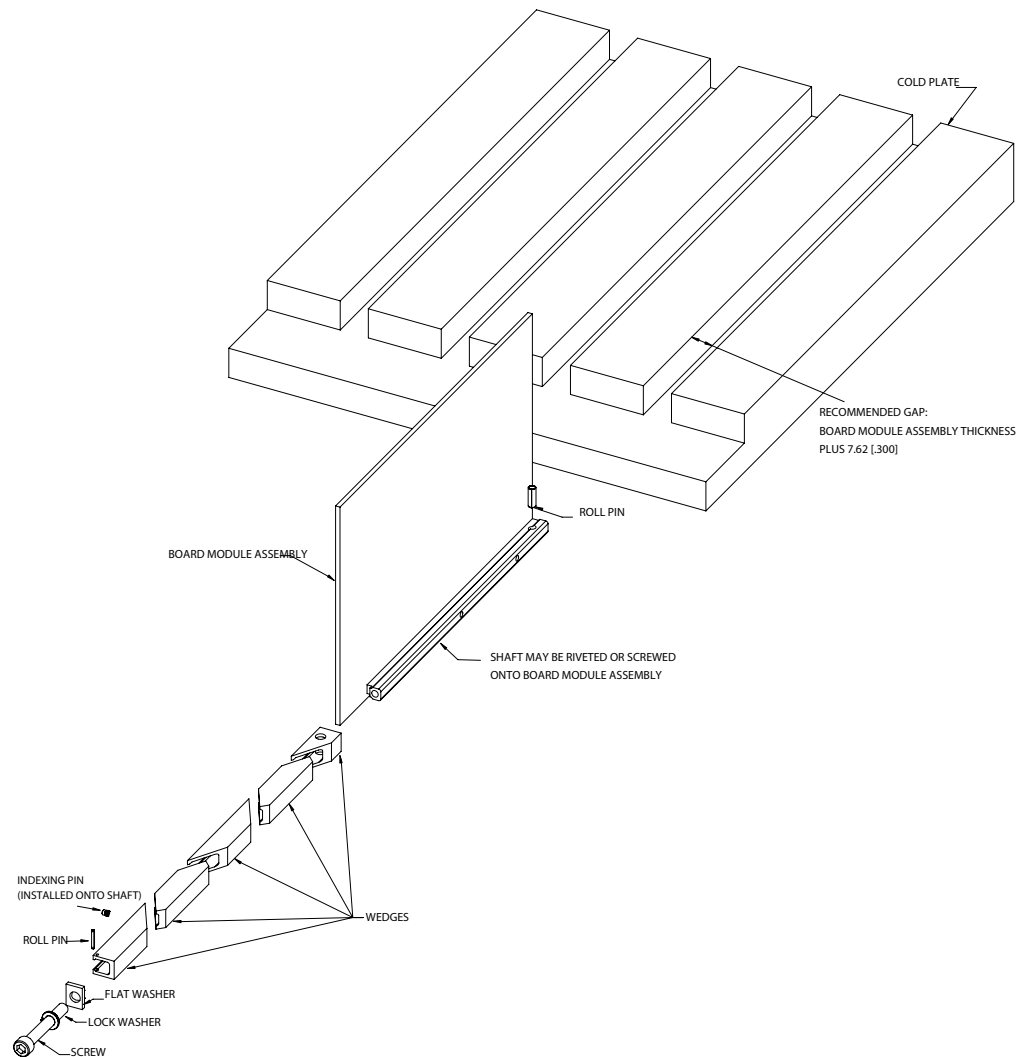
Material: MS35338-135
Finish: Passivated per AMS2700

ROLL PINS

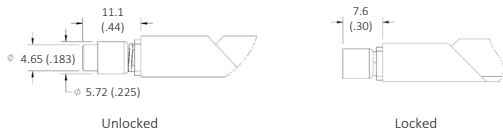
Material: 400 series stainless steel
Finish: Passivated per AMS2700

INDEXING PIN

Material: Aluminum Alloy 6061-T6
Finish: See finish table on opposite page

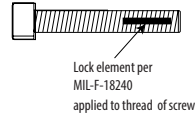


SERIES 260HC CARD LOK



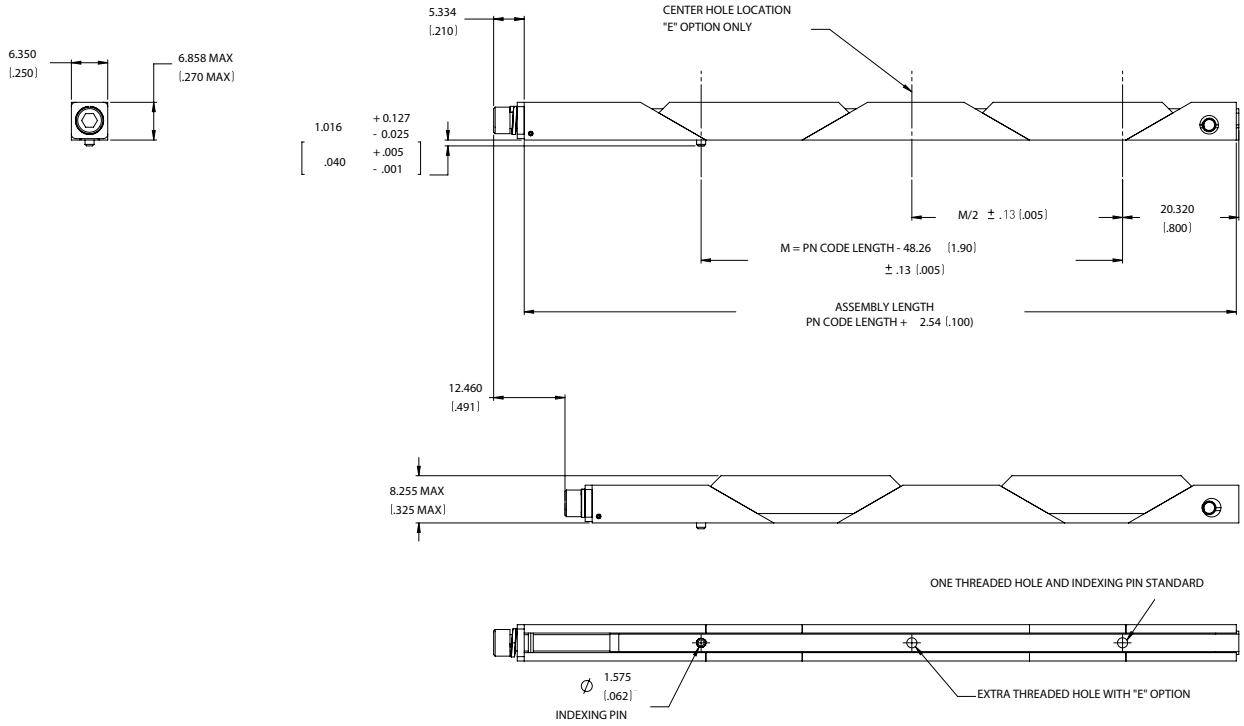
Detail "V"

Provides visual lock indication



Detail "L"

Provides prevailing torque for resistance to loosening from shock and vibration. Adds 22 N-cm (2 in-lbs) torque to assembly.



Part Number Code Series 260HC Card-Lok Five Piece

Prefix options

Metric Screw Head M2.5 Hex Drive **M**
 Standard Screw Head 3/32 Hex Drive **[blank]**

Visual Indicator **V**
 No Visual Indicator **[blank]**

Black Anodize **A**
 or choose from Finish Table **see table**

Suffix options

Length in 12.7 (.50) increments **96.52 (3.80)**
 to 172.72 (6.80)

Additional Center Mounting Hole **E**
 None **[blank]**

Mounting Options - through mounting holes **H**
 or choose from Mounting Method Table **see table**

Lock Element **L**
 None **[blank]**

Part Number Code Example:

MVA260HC-3.80ET2L

Series 260HC Card-Lok five piece 96.52 (3.80) long black anodized with M2.5 hex drive, visual indicator, mounting holes tapped for 2-56 thread, with locking element.

FINISH TABLE

Code Letter	Finish
"A"	Black Anodize per Mil-A-8625 Type II, Class 2
"HA"	Hard Black Anodize per Mil-A-8625 Type III, Class 2
"EN"	Electroless Nickel per Mil-C-26074 Class 4, Grade B, Bright

MOUNTING METHOD TABLE

Code Letter	Method
"H"	Ø1.73/1.85 (.068/.073) dia. through holes countersink 100° x 1.50 (.060) deep
"T0"	0-80 tapped hole
"T2"	2-56 tapped hole
"TM2"	M2 x 0.40 tapped hole
"TM2.5"	M2.5 x 0.45 tapped hole

