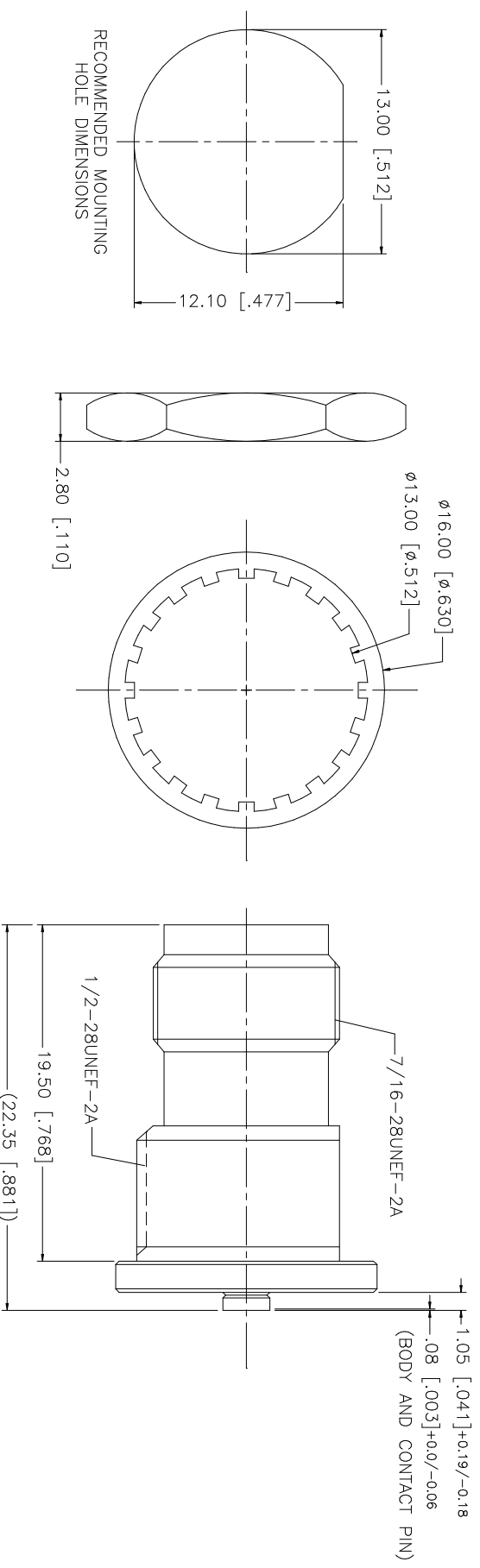


REV.	DATE	DESCRIPTION
NC	04/06/04	INITIAL RELEASE
A	05/26/06	REVISE PART DESCRIPTION TO "AMC" JACK



NOTES:
 1. MAX. PANEL THICKNESS = 5mm

QTY	FINISH	MATERIAL	DESCRIPTION
1	NICKEL	BRASS	CONTACT PIN BODY
1	GOLD	BRASS	CONTACT PIN
1	NATURAL	TEFLON	INSULATOR BODY
1	NICKEL	BRASS	LOCK WASHER
1	NICKEL	BRASS	HEX NUT

UNLESS OTHERWISE SPECIFIED DIMENSIONS ARE INCHES AND FOR CUSTOMER REFERENCE ONLY.	UNLESS OTHERWISE SPECIFIED DIMENSIONS ARE MILLIMETERS.
TOLERANCES FOR MILLIMETERS ARE:	
0.5 - 8mm ± 0.20mm	
8 - 30mm ± 0.40mm	
30 - 120mm ± 0.50mm	
TOLERANCES FOR INCHES ARE:	
.020 - .315 = ± 0.0007"	
.315 - 1.180 = ± 0.015"	
1.180 - 4.724 = ± 0.020"	

APPROVALS	DATE
DRAWN G.R.S.	05/26/06
CHECKED	
ISSUED	
SHEET 1 OF 1	

PART DESCRIPTION	PART NO.	DWG. NO.	REV.	SIZE	SCALE
AMC JACK TO TNC REVERSE POLARITY JACK BULKHEAD ADAPTER	242192RP	242192RP.DWG	A	A	NA