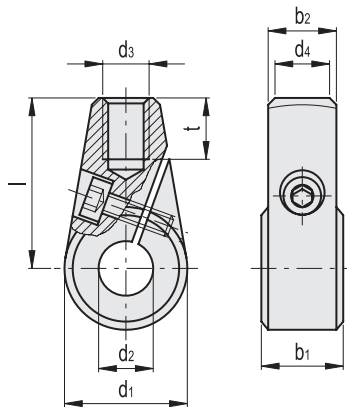


STANDARD EXECUTIONS

- **GN 150:** black-oxide sintered steel.
Cylindrical head screws, black-oxide steel hexagon socket.
- **GN 150.5:** AISI 316L sintered stainless steel.
Cylindrical head screws, AISI 304 stainless steel hexagon socket.

FEATURES AND APPLICATIONS

GN 150 and GN 150.5 split hubs can be fitted easily to spindles and require no prior machining. The hub can be oriented to the required position.
Spindle tolerance should be $\leq h11$.
For lever arms with handles to assemble on GN 150 and GN 150.5 split hubs, see BL.366 - BL.368 (see page 571), BL.666 - BL.668 (see page 570).



GN 150

Code	Description	d1	l	b1±0.2	b2	d2	d3	d4	t	⚖
GN.20101	GN 150-24-B10	24	36	15.5	13	10	M8	10	11	63
GN.20111	GN 150-28-B12	28	41	17.5	15	12	M10	12	14	107
GN.20121	GN 150-32-B14	32	45	19.5	17	14	M12	14	16	142

GN 150.5

INOX STAINLESS STEEL

Code	Description	d1	l	b1±0.2	b2	d2	d3	d4	t	⚖
GN.20131	GN 150.5-24-B10	24	36	15.5	13	10	M8	10	11	64
GN.20134	GN 150.5-28-B12	28	41	17.5	15	12	M10	12	14	94
GN.20137	GN 150.5-32-B14	32	45	19.5	17	14	M12	14	16	140

- 1
- 2
- 3
- 4
- 5
- 6
- 7
- 8
- 9
- 10
- 11
- 12
- 13
- 14
- 15
- 16
- 17
- 18

Clamping levers