

GN 285 | Pivoting connecting clamps

Aluminium



- 1
- 2
- 3
- 4
- 5
- 6
- 7
- 8
- 9
- 10
- 11
- 12
- 13
- 14
- 15
- 16
- 17
- 18

MATERIAL

Aluminium, matte finish.
AISI 304 stainless steel screws and nuts.

STANDARD EXECUTIONS

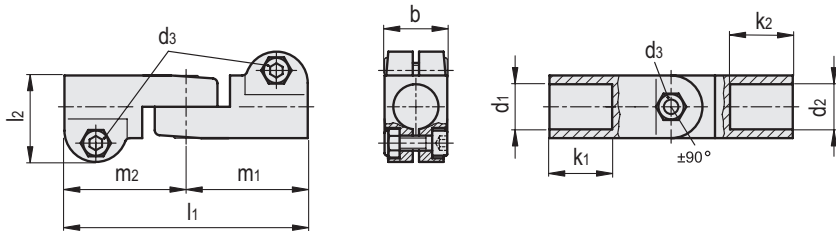
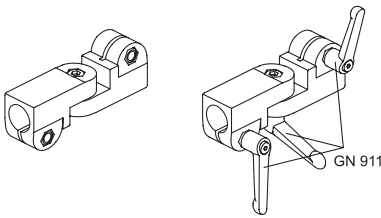
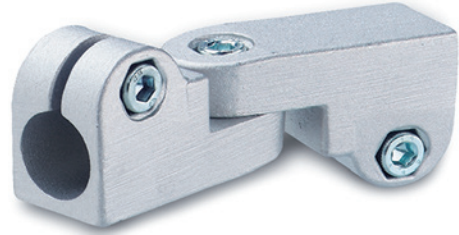
- **GN 285-BL**: natural aluminium.
- **GN 285-SW**: aluminium, epoxy resin coating, RAL 9005 black colour.

FEATURES AND APPLICATIONS

The assembly hole of GN 285 connecting clamps allows an excellent match with tubes GN 990 (see page 1368).
GN 285 connecting clamps are an assembly of two connecting clamps GN 275 (see page 1346).
The clamping screws d3 may be replaced by clamping kits GN 911 (see page 1372).

SPECIAL EXECUTIONS ON REQUEST

Different combinations of holes d1/d2.



GN 285-BL

Code	Description	b	d1	d2	d3	k1	k2	l1	l2	m1	m2	d3 Clamping kit	⚖️
GN.63411	GN 285-B12-B12-2-BL	25	12	12	M6	25	25	97	34.5	48.5	48.5	GN 911-M6-22	156
GN.63412	GN 285-B12-B14-2-BL	25	12	14	M6	25	25	97	34.5	48.5	48.5	GN 911-M6-22	153
GN.63419	GN 285-B12-B16-2-BL	25	12	16	M6	25	25	97	34.5	48.5	48.5	GN 911-M6-22	150
GN.63425	GN 285-B12-B18-2-BL	25	12	18	M6	25	25	97	34.5	48.5	48.5	GN 911-M6-22	147
GN.63431	GN 285-B14-B14-2-BL	25	14	14	M6	25	25	97	34.5	48.5	48.5	GN 911-M6-22	148
GN.63439	GN 285-B14-B16-2-BL	25	14	16	M6	25	25	97	34.5	48.5	48.5	GN 911-M6-22	145
GN.63445	GN 285-B14-B18-2-BL	25	14	18	M6	25	25	97	34.5	48.5	48.5	GN 911-M6-22	142
GN.63451	GN 285-B16-B16-2-BL	25	16	16	M6	25	25	97	34.5	48.5	48.5	GN 911-M6-22	144
GN.63462	GN 285-B16-B18-2-BL	25	16	18	M6	25	25	97	34.5	48.5	48.5	GN 911-M6-22	141
GN.63471	GN 285-B18-B18-2-BL	25	18	18	M6	25	25	97	34.5	48.5	48.5	GN 911-M6-22	136

GN 285-SW

Code	Description	b	d1	d2	d3	k1	k2	l1	l2	m1	m2	d3 Clamping kit	⚖️
GN.63416	GN 285-B12-B12-2-SW	25	12	12	M6	25	25	97	34.5	48.5	48.5	GN 911-M6-22	156
GN.63417	GN 285-B12-B14-2-SW	25	12	14	M6	25	25	97	34.5	48.5	48.5	GN 911-M6-22	153
GN.63422	GN 285-B12-B16-2-SW	25	12	16	M6	25	25	97	34.5	48.5	48.5	GN 911-M6-22	150
GN.63427	GN 285-B12-B18-2-SW	25	12	18	M6	25	25	97	34.5	48.5	48.5	GN 911-M6-22	147
GN.63436	GN 285-B14-B14-2-SW	25	14	14	M6	25	25	97	34.5	48.5	48.5	GN 911-M6-22	148
GN.63442	GN 285-B14-B16-2-SW	25	14	16	M6	25	25	97	34.5	48.5	48.5	GN 911-M6-22	145
GN.63447	GN 285-B14-B18-2-SW	25	14	18	M6	25	25	97	34.5	48.5	48.5	GN 911-M6-22	142
GN.63456	GN 285-B16-B16-2-SW	25	16	16	M6	25	25	97	34.5	48.5	48.5	GN 911-M6-22	144
GN.63467	GN 285-B16-B18-2-SW	25	16	18	M6	25	25	97	34.5	48.5	48.5	GN 911-M6-22	141
GN.63476	GN 285-B18-B18-2-SW	25	18	18	M6	25	25	97	34.5	48.5	48.5	GN 911-M6-22	136

Connecting clamps