

ON Semiconductor®

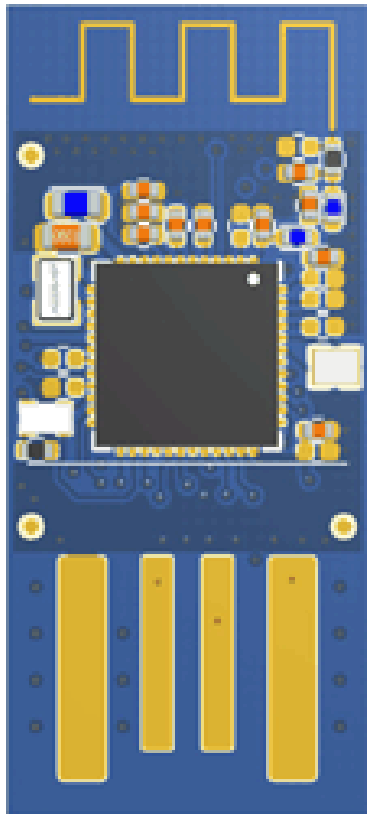


Part Number: RSL10-USB001GEVK

Description: RSL10 USB Dongle

The RSL10 USB Dongle enables rapid prototyping of peripherals for Bluetooth® Low Energy devices. Using the included Bluetooth® Low Energy Explorer software, engineers can develop, test, and evaluate Bluetooth-based applications quickly and easily.

Using a 2 Mbps connection, the RSL10 USB dongle acts as a generic central device during the development process and can be used to scan for available devices, establish connections, pair, bond, and list services and characteristics.



Features and Applications

Features

- Certified to International Wireless Regulations
- Bluetooth® Low Energy Explorer software
- [Bluetooth® 5 certified](#), single mode compliant (Bluetooth Low Energy)
- Supports Master and Slave Modes
Supports up to four connections
- Radio performance
- CE, [FCC](#), [IC](#), [MIC](#)
- Host interfaces
- Diagnose Bluetooth® Low Energy connections during application development
- Transmit power: +6dBm
- Receiver sensitivity: -94dBm
- USB (virtual COM port emulation)