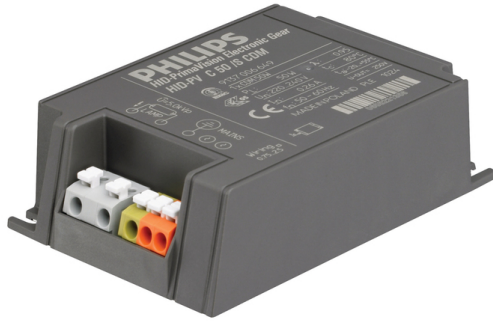


HID-PrimaVision Compact Built-in for CDM



HID-PV C 50 /S CDM 220-240V 50/60Hz

Compact, lightweight and easy to use high performance range of electronic gears for optimal performance of 35W, 70W, 100W and 150W CDM lamps

Product data

• General Characteristics

| | |
|------------------------------|-----------|
| Rated Number of Lamps | 1 piece |
| Rated Ballast-Lamp Power | 50 |
| Rated Lamptype | CDM |
| Line Voltage | 220-240 V |
| Line Frequency | 50/60 Hz |
| Housing | /S |
| Lifetime 90% surv.@Tcaselife | 40000 hr |
| Suitable for Outdoor use? | No |

• Operating Characteristics

| | |
|--------------------------------|---------------|
| Automatic restart | Yes |
| Constant wattage deviation | -3%/+3% |
| Inrush current Peak | 26 (max) A |
| Inrush current Width | 0.25 ms |
| Max ballast on MCB(16A type B) | 24 x |
| Earth leakage current | 0.25 (max) mA |
| Mains voltage safety (AC) | -18%/+10% |
| Mains voltage performance (AC) | -10%/+6% |
| Operating frequency * | 0.14 kHz |
| Overvoltage protection 320Vac | 48 hr |
| PowerFactor 100% output power | 0.95 - |
| Ignition switch-off time | 20 min |
| Ignition Voltage | 4.0 (max) kV |

Hum and Noise level 37 dB(A)

• Wiring Characteristics

| | |
|----------------------------------|---------------------------|
| Cable-Cap output-wires mutual | 150 pF |
| Connector type | Insert |
| Max. cable length | 1.5 m |
| Device/Lamp Wcs Ballast contacts | 0.50-2.50 mm ² |

• Temperature Characteristics

| | |
|-------------------------------|-----------------------|
| Active temperature protection | Yes |
| T-case life | 75 C |
| T-case maximum | 75 (max) C |
| T-ambient | -20 (min), 55 (max) C |
| T-storage | -25 (min), 80 (max) C |

• Approval & Application Chars

| | |
|----------------------------|-----------------|
| EMI 9 kHz ... 300MHz | CISPR 15 ed 7.2 |
| Safety Standard | IEC 61347-2-3 |
| Quality Standard | ISO 9000:2000 |
| Environmental Standard | ISO 14001 |
| Harmonic current emissions | IEC 61000-3-2 |
| EMC Immunity | IEC 61547 |
| Vibrations | IEC 68-2-6 Fc |
| Bumps | IEC 68-2-29 Eb |
| Humidity | IEC 928-13 |
| Approval marks | ENEC |
| CE marking | Yes |



asimpleswitch.com

PHILIPS

sense and simplicity

HID-PrimaVision Compact Built-in for CDM

• Product Dimensions

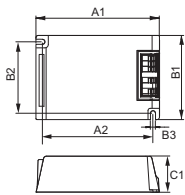
| | |
|-------------------------|----------|
| Length A1 | 109.6 mm |
| Fixing Hole Distance | 98.5 mm |
| Length A2 | |
| Width B1 | 74.4 mm |
| Height C1 | 32.2 mm |
| Fixing Hole Diameter D1 | 4.9 mm |

• Product Data

| | |
|-------------------|-------------------------------------|
| Order code | 913700664966 |
| Full product code | 913700664966 |
| Full product name | HID-PV C 50 /S CDM 220-240V 50/60Hz |

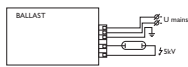
| | |
|-----------------------------|-------------------------------------|
| Order product name | HID-PV C 50 /S CDM 220-240V 50/60Hz |
| Pieces per pack | 1 |
| Packing configuration | 12 |
| Packs per outerbox | 12 |
| Bar code on pack - EAN1 | 8727900933635 |
| Bar code on outerbox - EAN3 | 8727900933642 |
| Logistic code(s) - 12NC | 913700664966 |
| Net weight per piece | 0.240 kg |

Dimensional drawing



HID-PV C 35, 50 & 70 /S CDM

| Product | A1 (Norm) | A2 (Norm) | B1 (Norm) | B2 (Norm) | C1 (Norm) | D1 (Norm) |
|-------------------------------------|-----------|-----------|-----------|-----------|-----------|-----------|
| HID-PV C 50 /S CDM 220-240V 50/60Hz | 109.6 | 98.5 | 74.4 | - | 32.2 | 4.9 |



HID-PV C 50 /P & /S CDM



© 2011 Koninklijke Philips Electronics N.V.
All rights reserved.

Specifications are subject to change without notice. Trademarks are the property of Koninklijke Philips Electronics N.V. or their respective owners.

www.philips.com/lighting

2011, May 14
data subject to change