

**NEW**

- Up to 4.000 A ac
- Easy and fast wiring with Rogowski coils



# S201RC-LP

## ROGOWSKI SENSORS CONVERTER LOOP-POWERED

### Highlights

- **Power supply by current loop**  
4..20 mA (9..28 Vdc)
- **Current measurements up to**  
4.000 A ac
- **Selectable input range by frontal**  
trimmer
- **Wide operating temperature**  
range : -25..70°C
- **Low consumption: < 0,6 W**
- **Accuracy: < 0,5%**
- **Measurements with Rogowski**  
probes with 100 mV/kA output  
TRMS

S201RC-LP is a loop powered converter suitable for ac current measurements coupled with Rogowski sensors. This converter is characterized by low consumption (<0.6 W) and works with a sensor that provides 100 mV/kA as output signal for TRMS measurements.

The input scales are selectable as 250, 500, 1.000, 2.000, 4.000 A. S201RC-LP provides power surge protection, reverse polarity and damping filter (0.5 s / 1 s).

The combined use with Rogowski sensor ensures good accuracy, shielding against electromagnetic noise and allows the user to cover applications with difficult access due to the non-intrusiveness measurement system.

Typical applications of S201RC-LP are high current measurement of existing plants, load, power and consumption monitoring, laboratory measuring instruments and welding machines control.





## ROGOWSKI SENSORS CONVERTER LOOP-POWERED

### TECHNICAL FEATURES

#### GENERAL DATA

Power supply	by output current loop 4..20 mA
Max consumption	< 0,6 W
Degree protection	IP20
Status indicator	Over alarm range
Response time	500 ms
Accuracy	0.5%
Thermal coefficient	<200 ppm/°C
Settings	Full scale and filter
Operating temperature	-25..70°C
Storage temperature	-40..85°C
Humidity	10 - 90 % (non-condensing)
Altitude	Up to 2000 m above s.l.
Dimensions LxHxD	18x110x62 mm
Connections	Removable terminal 5mm pitch (conductor section 2.5 mm <sup>2</sup> )
Enclosure	PC-ABS self-extinguishing, grey color
Mounting	DIN rail 35 mm (IEC/EN 60715)
Standards	CE
Norms	EN61326 (EMC), EN61010-1 (SAFETY)

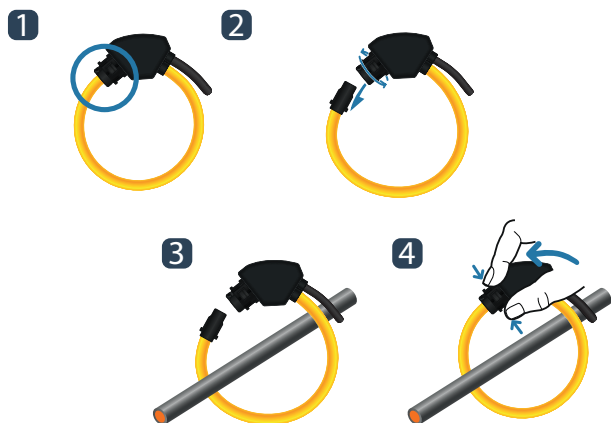
#### INPUT DATA

Channel	1
Type	Rogowski's sensor 100mV / kA scales: 250A, 500A, 1000A, 2000A, 4000A (50-60Hz) Rogowski's sensor 333mV / kA scales: 75A, 150A, 300A, 600A, 1200A (50-60Hz) Measurement: TRMS Bandwidth 3kHz Overload 20kA (2 Vrms) Mains filter damping: Fast = 0.5s or Slow = 1s

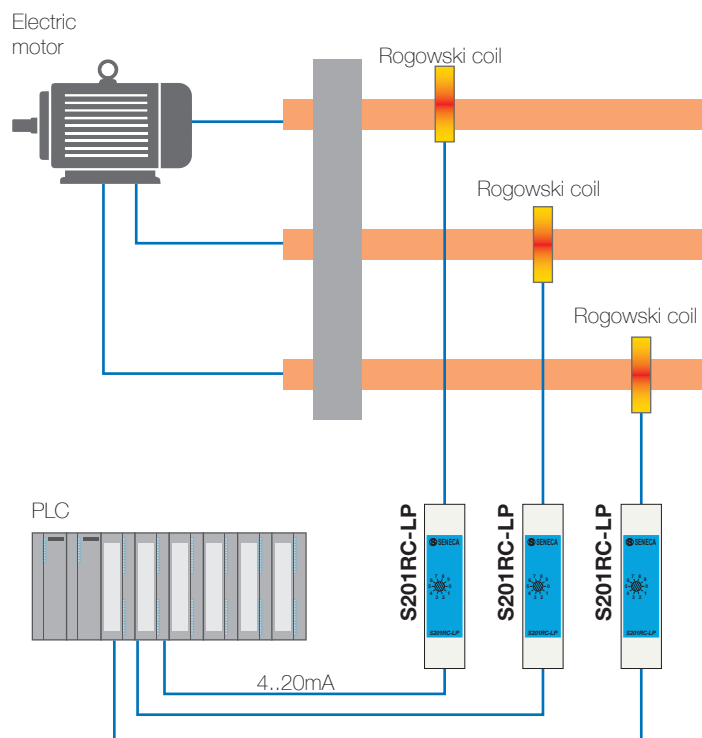
#### DATI DI USCITA

Channel	1
Type	CURRENT 4..20 mA Max output: 22 mA Power supply: by current loop 4..20 mA (9..28 Vdc) Max load: 600 Ohm

### INSTALLATION EXAMPLE OF ROGOWSKI SENSOR



### EXAMPLE



### ORDER CODES

Code	Description
<b>S201RC-LP</b>	Loop-powered converter for ac current with Rogowski sensors
<b>RC150-025-100-3M</b>	Rogowski coil L=25cm Øint. 8cm, 100mV/1kA-50Hz, cable L=3mt.
<b>RC150-035-100-3M</b>	Rogowski coil L=35cm Øint. 11cm, 100mV/1kA-50Hz, cable L=3mt.
<b>RC150-040-100-3M</b>	Rogowski coil L=40cm Øint. 12cm, 100mV/1kA-50Hz, cable L=3mt.
<b>RC150-060-100-3M</b>	Rogowski coil L=60cm Øint. 19cm, 100mV/1kA-50Hz, cable L=3mt.
<b>RC150-090-100-3M</b>	Rogowski coil L=90cm Øint. 28cm, 100mV/1kA-50Hz, cable L=3mt.
<b>RC150-120-100-3M</b>	Rogowski coil L=120cm Øint. 38cm, 100mV/1kA-50Hz, cable L=3mt.
<b>RC150-180-100-3M</b>	Rogowski coil L=180cm Øint. 57cm, 100mV/1kA-50Hz, cable L=3mt.
<b>RC150-CAVEX-ROG1</b>	Extending 1mt beyond the 3 mt. Standard cable connecting the Rogowski coil L.1
<b>RC150-CAVEX-ROG2</b>	Extending 1mt beyond the 3 mt. Standard cable connecting the Rogowski coil L.2
<b>RC150-CAVEX-ROG3</b>	Extending 1mt beyond the 3 mt. Standard cable connecting the Rogowski coil L.3