

- 1
- 2
- 3
- 4
- 5
- 6
- 7
- 8
- 9
- 10
- 11
- 12
- 13
- 14
- 15
- 16
- 17
- 18

THREADED BODY

Zinc-plated steel.

STANDARD EXECUTIONS

Black-oxide and case-hardened steel end.

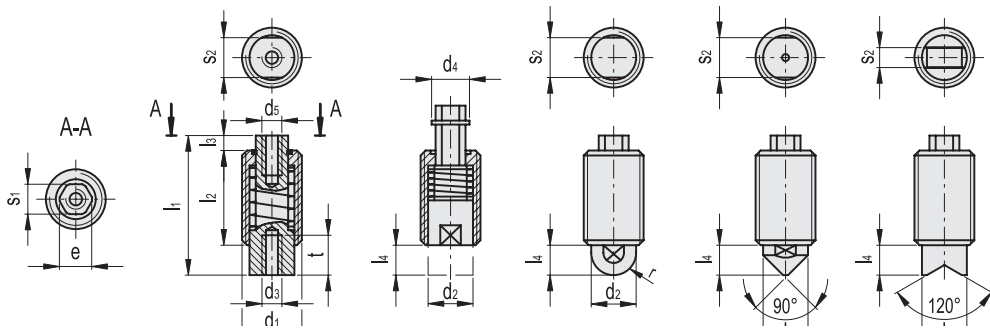
- **GN 513-I**: with female thread.
- **GN 513-H**: semispherical.
- **GN 513-K**: with bolt.
- **GN 513-P**: prismatic.

End-force spring:

- 1: normal end-force spring, with phosphatised steel back assembly ring, anthracite colour;
- 2: heavy end-force spring, with zinc-plated steel back assembly ring.

FEATURES AND APPLICATIONS

GN 513 threaded spring elements are suitable for detenting, positioning or for clamping elements by means of the spring pressure load.



| Code | Description | d1 | d2 | d3 | d4 | d5 | e | l1 | l2 | l3 | l4 | s1 | s2 | t | r | Spring preload [N] | Spring max load [N] | Δ |
|----------|--------------------|---------|------|----|------|----|-----|----|----|----|----|----|----|----|-----|--------------------|---------------------|----------|
| GN.38222 | GN 513-M12x1.5-I-1 | M12x1.5 | 9 | M4 | 7.6 | M4 | 6.5 | 28 | 19 | 3 | 6 | 6 | 8 | 8 | - | 16 | 35 | 10 |
| GN.38227 | GN 513-M16x1.5-I-1 | M16x1.5 | 12 | M5 | 8.8 | M5 | 7.8 | 38 | 27 | 3 | 8 | 7 | 10 | 10 | - | 25 | 71 | 30 |
| GN.38232 | GN 513-M20x1.5-I-1 | M20x1.5 | 14.5 | M6 | 11.4 | M6 | 10 | 47 | 33 | 4 | 10 | 9 | 12 | 12 | - | 40 | 130 | 65 |
| GN.38262 | GN 513-M12x1.5-I-2 | M12x1.5 | 9 | M4 | 7.6 | M4 | 6.5 | 28 | 19 | 3 | 6 | 6 | 8 | 8 | - | 18 | 56 | 10 |
| GN.38267 | GN 513-M16x1.5-I-2 | M16x1.5 | 12 | M5 | 8.8 | M5 | 7.8 | 38 | 27 | 3 | 8 | 7 | 10 | 10 | - | 45 | 125 | 32 |
| GN.38272 | GN 513-M20x1.5-I-2 | M20x1.5 | 14.5 | M6 | 11.4 | M6 | 10 | 47 | 33 | 4 | 10 | 9 | 12 | 12 | - | 65 | 200 | 67 |
| GN.38221 | GN 513-M12x1.5-H-1 | M12x1.5 | 9 | - | 7.6 | M4 | 6.5 | 28 | 19 | 3 | 6 | - | 8 | - | 4.5 | 16 | 35 | 10 |
| GN.38226 | GN 513-M16x1.5-H-1 | M16x1.5 | 12 | - | 8.8 | M5 | 7.8 | 38 | 27 | 3 | 8 | - | 10 | - | 6 | 25 | 71 | 30 |
| GN.38231 | GN 513-M20x1.5-H-1 | M20x1.5 | 14.5 | - | 11.4 | M6 | 10 | 47 | 33 | 4 | 10 | - | 12 | - | 7.2 | 40 | 130 | 66 |
| GN.38261 | GN 513-M12x1.5-H-2 | M12x1.5 | 9 | - | 7.6 | M4 | 6.5 | 28 | 19 | 3 | 6 | - | 8 | - | 4.5 | 18 | 56 | 10 |
| GN.38266 | GN 513-M16x1.5-H-2 | M16x1.5 | 12 | - | 8.8 | M5 | 7.8 | 38 | 27 | 3 | 8 | - | 10 | - | 6 | 45 | 125 | 32 |
| GN.38271 | GN 513-M20x1.5-H-2 | M20x1.5 | 14.5 | - | 11.4 | M6 | 10 | 47 | 33 | 4 | 10 | - | 12 | - | 7.2 | 65 | 200 | 67 |
| GN.38223 | GN 513-M12x1.5-K-1 | M12x1.5 | 9 | - | 7.6 | M4 | 6.5 | 28 | 19 | 3 | 6 | - | 8 | - | - | 16 | 35 | 13 |
| GN.38228 | GN 513-M16x1.5-K-1 | M16x1.5 | 12 | - | 8.8 | M5 | 7.8 | 38 | 27 | 3 | 8 | - | 10 | - | - | 25 | 71 | 30 |
| GN.38233 | GN 513-M20x1.5-K-1 | M20x1.5 | 14.5 | - | 11.4 | M6 | 10 | 47 | 33 | 4 | 10 | - | 12 | - | - | 40 | 130 | 65 |
| GN.38263 | GN 513-M12x1.5-K-2 | M12x1.5 | 9 | - | 7.6 | M4 | 6.5 | 28 | 19 | 3 | 6 | - | 8 | - | - | 18 | 56 | 12 |
| GN.38268 | GN 513-M16x1.5-K-2 | M16x1.5 | 12 | - | 8.8 | M5 | 7.8 | 38 | 27 | 3 | 8 | - | 10 | - | - | 45 | 125 | 31 |
| GN.38273 | GN 513-M20x1.5-K-2 | M20x1.5 | 14.5 | - | 11.4 | M6 | 10 | 47 | 33 | 4 | 10 | - | 12 | - | - | 65 | 200 | 63 |
| GN.38224 | GN 513-M12x1.5-P-1 | M12x1.5 | 9 | - | 7.6 | M4 | 6.5 | 28 | 19 | 3 | 6 | - | 4 | - | - | 16 | 35 | 12 |
| GN.38229 | GN 513-M16x1.5-P-1 | M16x1.5 | 12 | - | 8.8 | M5 | 7.8 | 38 | 27 | 3 | 8 | - | 6 | - | - | 25 | 71 | 29 |
| GN.38234 | GN 513-M20x1.5-P-1 | M20x1.5 | 14.5 | - | 11.4 | M6 | 10 | 47 | 33 | 4 | 10 | - | 8 | - | - | 40 | 130 | 64 |
| GN.38264 | GN 513-M12x1.5-P-2 | M12x1.5 | 9 | - | 7.6 | M4 | 6.5 | 28 | 19 | 3 | 6 | - | 4 | - | - | 18 | 56 | 12 |
| GN.38269 | GN 513-M16x1.5-P-2 | M16x1.5 | 12 | - | 8.8 | M5 | 7.8 | 38 | 27 | 3 | 8 | - | 6 | - | - | 45 | 125 | 31 |
| GN.38274 | GN 513-M20x1.5-P-2 | M20x1.5 | 14.5 | - | 11.4 | M6 | 10 | 47 | 33 | 4 | 10 | - | 8 | - | - | 65 | 200 | 65 |