

## Linear Drives (Lifting Devices) SFL 12 V - 24 V

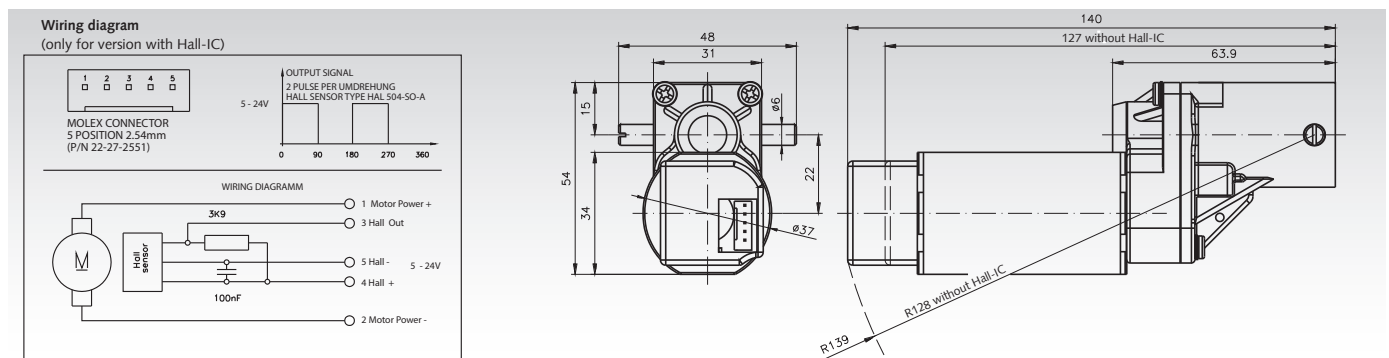
**Housing:** Motor: Steel, zinc-plated. Gearbox: Aluminium.  
Can be mounted in any position.  
**Gearbox:** Metal gears, trapezoidal thread nuts made from plastic.  
**Bearing:** Plain bearings.  
**Lubrication:** Spindle nut must be greased by the customer.  
**Motor:** DC motor 12 V or 24 V switching voltage, interference-free.  
Change the direction of rotation by switching the polarity.  
Protection class acc. to EN 60529: IP 20. Operating mode as per VDE 0530: S2.

Universal use linear drives, e.g. for actuating devices.  
Either with or without Hall-IC for positioning, end position limit or speed control. For Spindle Tr. 10 x 3 mm.  
The required spindle length depends on the required stroke length.  
The spindles have to be ordered separately. Mounting eye and stop block qfor spindle ends are included with the linear drive.

Ordering Details: e.g.: 1 Piece Product No. 475 201 01, Linear Drive 1000N without Hall IC (Spindles have to be ordered separately).



Spindle has to be ordered separately.



Product No. without Hall-IC	Product No. with Hall-IC	F Nom <sup>1)</sup> N	I Nom <sup>2)</sup> A	12 Volt-Operation			24 Volt-Operation			ratio i	Hall Pulses per linear motion puls/mm	Weight g
				F max <sup>3)</sup> N	V <sup>4)</sup> mm/s	ED <sup>5)</sup> %	F max <sup>3)</sup> N	V <sup>4)</sup> mm/s	ED <sup>5)</sup> %			
475 201 01	475 201 11	1000	1,0	-	-	-	1700	5,0	70	50:1	33,3	500
475 201 02	475 201 12	1200	3,2	600	5,0	50	2100	10,0	30	50:1	33,3	500
475 201 03	475 201 13	400 (200)*	1,5 (0,95)*	300	8,6	80	700	18,5	50	12:1	8,0	500
475 201 04	475 201 14	400	3,6	600	20,0	50	800	40,0	30	12:1	8,0	500

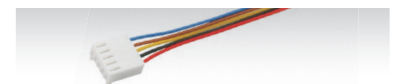
1) Nominal lifting power. 2) Nominal current. 3) Maximum lifting power. 4) Idle speed. 5) Maximum duty cycle.

\* Datas in brackets are valid for 12V-Operation.

Speed controllers Page 916

### Connecting Cable for Linear Drives with Hall-IC

Product No. 475 201 10 Connecting cable with one Molex plug for linear drives SFL with Hall-IC, length 500mm

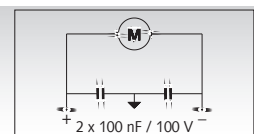


### Note

All values are averages, measured with the motor cold. Deviations of 10% are possible. To prevent the gearbox from being overloaded, the stated limit loads must not be exceeded.

**Important:** The thread of the spindle nut has to be greased by the customer!

### Factory interference suppression



### Spindles for linear drives (lifting devices) SFL

**Material:** Choice of C15 Steel or Stainless Steel 1.4305.

**Design:** Either ready-to-use for 300mm stroke lengths or by the metre for further processing by the customer.

**Caution:** Due to kinking, the max stroke length under compressive loads is limited to 300 mm.

The spindle has to be adequately lubricated before screwing in and operating (with normal machine grease).

Mounting eye and stop block are included with the linear drive.

Ordering Details: e.g.: 1 Piece Spindle Product No. 475 201 30 for stroke lengths 300mm

Product No.	Length mm	Material	Weight g	Design
475 201 30	383	Steel C15	230	Ready-to-Install. For stroke lengths 300mm.
640 010 00	1000	Steel C15	600	Sold by the metre, for further processing by the customer.
640 990 10	1000	Stainless Steel	600	Sold by the metre, for further processing by the customer.

