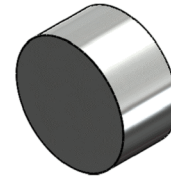
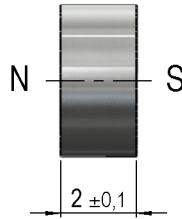
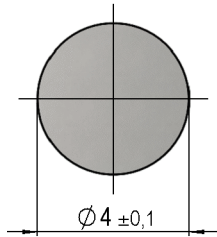


Dimensions (mm)

tolerances according to DIN ISO 2768-m
 Toleranzen gem. DIN ISO 2768-m

Isometric

Scale 5:1
 Massstab 5:1



Magnet NdFeB N35
 magnetization across 2 mm
 zinc plated
 magnetisiert über 2 mm
 verzinkt

Mag. values DIN IEC 60404-8-	Conditions	Min	Typ	Max	Unit
Remanence Br		1.170	1.210		mT
Coercivity HcB		860	915		kA/m
Coercivity HcJ		955			kA/m
Max. operating temperature				80	°C
Magnetic moment	measured with MS150		3		E-6 Vs*cm
Magnet Material		NdFeB			
Direction of Magnetization		axial			

General data	Conditions	Min	Typ	Max	Unit
Remarks		All details according to manufacturers information			