

GN 111.2 | Retaining cables

Stainless steel



- 1
- 2
- 3
- 4
- 5
- 6
- 7
- 8
- 9
- 10
- 11
- 12
- 13
- 14
- 15
- 16
- 17
- 18

CABLE

AISI 304 stainless steel.

STANDARD EXECUTIONS

Transparent PVC cable covering, AISI 304 stainless steel fixing plate and AISI 301 stainless steel two-coil ring:

- **GN 111.2-A-TR:** cable with two clamping rings.
- **GN 111.2-B-TR:** cable with one ring and one clamping plate.
- **GN 111.2-C-TR:** cable with two clamping plates.
- **GN 111.2-D-TR:** cable without ring and without clamping plate.
- **GN 111.2-E-TR:** cable without ring with one plate.

Black PVC cable covering, black galvanised AISI 304 stainless steel fixing plate and black galvanised AISI 301 stainless steel two-coil ring:

- **GN 111.2-A-SW:** cable with two clamping rings.
- **GN 111.2-B-SW:** cable with one ring and one clamping plate.
- **GN 111.2-C-SW:** cable with two clamping plates.
- **GN 111.2-D-SW:** cable without ring and without clamping plate.
- **GN 111.2-E-SW:** cable without ring with one plate.

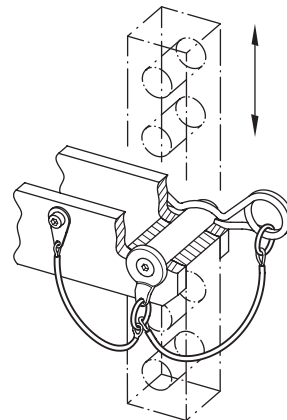
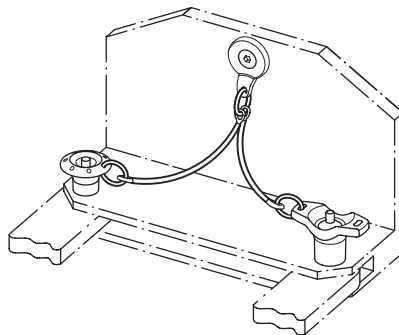
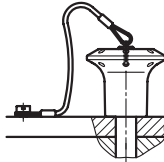
FEATURES AND APPLICATIONS

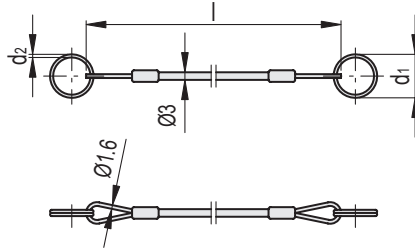
GN 111.2 retaining cables are mainly used in combination with the different types of self-locking pins. They are available in 5 different types allowing for use in different applications.

Implementation with the black coating (GN 111.2-SW) is visually discreet, allowing it to be used even in applications where reflections on the surface must be minimised.



Application example



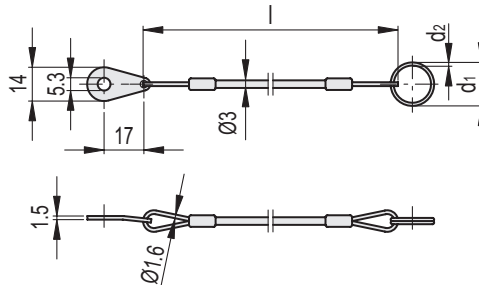


GN 111.2-A-TR

GN 111.2-A-SW

INOX STAINLESS STEEL

Code	Description	Code	Description	d1	d2	l	Static load with ring [N]	Static load without ring [N]	⚖
GN.10851	GN 111.2-150-14-A-TR	GN.40906	GN 111.2-150-14-A-SW	14*	1	150	50	1800	15
GN.10853	GN 111.2-150-18-A-TR	GN.40908	GN 111.2-150-18-A-SW	18**	1.3	150	90	1800	6
GN.11490	GN 111.2-150-24-A-TR	GN.40910	GN 111.2-150-24-A-SW	24	1.5	150	100	1800	8
GN.11492	GN 111.2-150-30-A-TR	GN.40912	GN 111.2-150-30-A-SW	30	1.8	150	120	1800	8
GN.10856	GN 111.2-200-14-A-TR	GN.40920	GN 111.2-200-14-A-SW	14*	1	200	50	1800	20
GN.10858	GN 111.2-200-18-A-TR	GN.40922	GN 111.2-200-18-A-SW	18**	1.3	200	90	1800	6
GN.11494	GN 111.2-200-24-A-TR	GN.40924	GN 111.2-200-24-A-SW	24	1.5	200	100	1800	9
GN.11496	GN 111.2-200-30-A-TR	GN.40926	GN 111.2-200-30-A-SW	30	1.8	200	120	1800	10
GN.10861	GN 111.2-320-14-A-TR	GN.40936	GN 111.2-320-14-A-SW	14*	1	320	50	1800	10
GN.10863	GN 111.2-320-18-A-TR	GN.40938	GN 111.2-320-18-A-SW	18**	1.3	320	90	1800	10
GN.11498	GN 111.2-320-24-A-TR	GN.40940	GN 111.2-320-24-A-SW	24	1.5	320	100	1800	14
GN.11500	GN 111.2-320-30-A-TR	GN.40942	GN 111.2-320-30-A-SW	30	1.8	320	120	1800	20
GN.10866	GN 111.2-500-14-A-TR	GN.40951	GN 111.2-500-14-A-SW	14*	1	500	50	1800	20
GN.10868	GN 111.2-500-18-A-TR	GN.40953	GN 111.2-500-18-A-SW	18**	1.3	500	90	1800	10
GN.11502	GN 111.2-500-24-A-TR	GN.40955	GN 111.2-500-24-A-SW	24	1.5	500	100	1800	35
GN.11504	GN 111.2-500-30-A-TR	GN.40957	GN 111.2-500-30-A-SW	30	1.8	500	120	1800	20



GN 111.2-B-TR

GN 111.2-B-SW

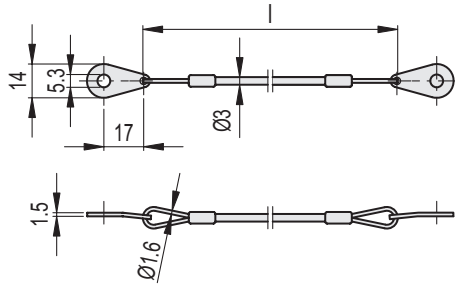
INOX STAINLESS STEEL

Code	Description	Code	Description	d1	d2	l	Static load with ring [N]	Static load without ring [N]	⚖
GN.10852	GN 111.2-150-14-B-TR	GN.40907	GN 111.2-150-14-B-SW	14*	1	150	50	1800	10
GN.10854	GN 111.2-150-18-B-TR	GN.40909	GN 111.2-150-18-B-SW	18**	1.3	150	90	1800	7
GN.11491	GN 111.2-150-24-B-TR	GN.40911	GN 111.2-150-24-B-SW	24	1.5	150	100	1800	10
GN.11493	GN 111.2-150-30-B-TR	GN.40913	GN 111.2-150-30-B-SW	30	1.8	150	120	1800	10
GN.10857	GN 111.2-200-14-B-TR	GN.40921	GN 111.2-200-14-B-SW	14*	1	200	50	1800	7
GN.10859	GN 111.2-200-18-B-TR	GN.40923	GN 111.2-200-18-B-SW	18**	1.3	200	90	1800	8
GN.11495	GN 111.2-200-24-B-TR	GN.40925	GN 111.2-200-24-B-SW	24	1.5	200	100	1800	9
GN.11497	GN 111.2-200-30-B-TR	GN.40927	GN 111.2-200-30-B-SW	30	1.8	200	120	1800	20
GN.10862	GN 111.2-320-14-B-TR	GN.40937	GN 111.2-320-14-B-SW	14*	1	320	50	1800	10
GN.10864	GN 111.2-320-18-B-TR	GN.40939	GN 111.2-320-18-B-SW	18**	1.3	320	90	1800	9
GN.11499	GN 111.2-320-24-B-TR	GN.40941	GN 111.2-320-24-B-SW	24	1.5	320	100	1800	7
GN.11501	GN 111.2-320-30-B-TR	GN.40943	GN 111.2-320-30-B-SW	30	1.8	320	120	1800	20
GN.10867	GN 111.2-500-14-B-TR	GN.40952	GN 111.2-500-14-B-SW	14*	1	500	50	1800	13
GN.10869	GN 111.2-500-18-B-TR	GN.40954	GN 111.2-500-18-B-SW	18**	1.3	500	90	1800	6
GN.11503	GN 111.2-500-24-B-TR	GN.40956	GN 111.2-500-24-B-SW	24	1.5	500	100	1800	30
GN.11505	GN 111.2-500-30-B-TR	GN.40958	GN 111.2-500-30-B-SW	30	1.8	500	120	1800	20

* Suitable for the following lock pins: GN 124 only Ø6, Ø8; GN 113.1, GN 113.3, GN 113.5, GN 113.6, GN 113.7, GN 113.8, GN 114.2, GN 114.3, GN 114.6 all the Ø.

** Suitable for the following lock pins: GN 124 only Ø10, Ø12, Ø16.

- 1
- 2
- 3
- 4
- 5
- 6
- 7
- 8
- 9
- 10
- 11
- 12
- 13
- 14
- 15
- 16
- 17
- 18

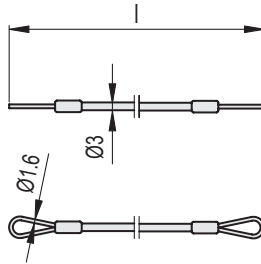


INOX STAINLESS STEEL

GN 111.2-C-TR

GN 111.2-C-SW

Code	Description	Code	Description	l	Static load without ring [N]	
GN.40902	GN 111.2-150-C-TR	GN.40901	GN 111.2-150-C-SW	150	1800	9
GN.40916	GN 111.2-200-C-TR	GN.40915	GN 111.2-200-C-SW	200	1800	11
GN.40932	GN 111.2-320-C-TR	GN.40931	GN 111.2-320-C-SW	320	1800	12
GN.40947	GN 111.2-500-C-TR	GN.40946	GN 111.2-500-C-SW	500	1800	15

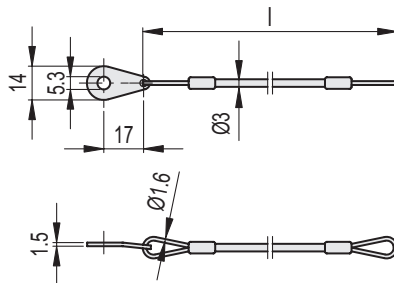


INOX STAINLESS STEEL

GN 111.2-D-TR

GN 111.2-D-SW

Code	Description	Code	Description	l	Static load without ring [N]	
GN.10872	GN 111.2-150-D-TR	GN.40903	GN 111.2-150-D-SW	150	1800	4
GN.10874	GN 111.2-200-D-TR	GN.40917	GN 111.2-200-D-SW	200	1800	5
GN.10876	GN 111.2-320-D-TR	GN.40933	GN 111.2-320-D-SW	320	1800	7
GN.10878	GN 111.2-500-D-TR	GN.40948	GN 111.2-500-D-SW	500	1800	10



INOX STAINLESS STEEL

GN 111.2-E-TR

GN 111.2-E-SW

Code	Description	Code	Description	l	Static load without ring [N]	
GN.40905	GN 111.2-150-E-TR	GN.40904	GN 111.2-150-E-SW	150	1800	7
GN.40919	GN 111.2-200-E-TR	GN.40918	GN 111.2-200-E-SW	200	1800	7
GN.40935	GN 111.2-320-E-TR	GN.40934	GN 111.2-320-E-SW	320	1800	10
GN.40950	GN 111.2-500-E-TR	GN.40949	GN 111.2-500-E-SW	500	1800	13

Indexing and positioning elements