

- 1
- 2
- 3
- 4
- 5
- 6
- 7
- 8
- 9
- 10
- 11
- 12
- 13
- 14
- 15
- 16
- 17
- 18

**MATERIAL**

Aluminium, matte finish.  
AISI 304 stainless steel screws and nuts.

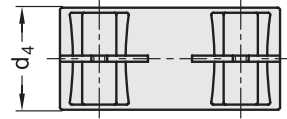
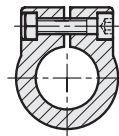
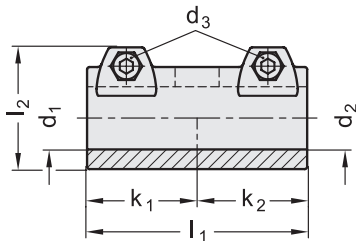
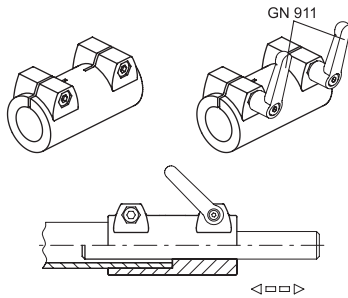
**STANDARD EXECUTIONS**

- **GN 242-BL**: natural aluminium.
- **GN 242-SW**: aluminium, epoxy resin coating, RAL 9005 black colour.

**FEATURES AND APPLICATIONS**

GN 242 sleeve supports allow an excellent match with tubes GN 990 (see page 1778). They are particularly suitable also for connecting two tubes.

The clamping screws d3 may be replaced by clamping kit GN 911 (see page 1782).



**GN 242-BL**

Code	Description	d1	d2	d3	d4	k1	k2	l1	l2	d3 Clamping kit	⚖️
GN.56611	GN 242-B20-B20-2-BL	20	20	M8	40	45	45	90	52	GN 911-M8-32	240
GN.56631	GN 242-B25-B25-2-BL	25	25	M8	40	45	45	90	52	GN 911-M8-32	204
GN.56651	GN 242-B30-B30-2-BL	30	30	M8	40	45	45	90	52	GN 911-M8-32	156
GN.56671	GN 242-B40-B40-2-BL	40	40	M10	65	70	70	140	77.5	GN 911-M10-50	922
GN.56691	GN 242-B42-B42-2-BL	42	42	M10	65	70	70	140	77.5	GN 911-M10-50	865
GN.56711	GN 242-B45-B45-2-BL	45	45	M10	65	70	70	140	77.5	GN 911-M10-50	812
GN.56731	GN 242-B48-B48-2-BL	48	48	M10	65	70	70	140	77.5	GN 911-M10-50	748
GN.56751	GN 242-B50-B50-2-BL	50	50	M10	65	70	70	140	77.5	GN 911-M10-50	682

**GN 242-SW**

Code	Description	d1	d2	d3	d4	k1	k2	l1	l2	d3 Clamping kit	⚖️
GN.56616	GN 242-B20-B20-2-SW	20	20	M8	40	45	45	90	52	GN 911-M8-32	240
GN.56636	GN 242-B25-B25-2-SW	25	25	M8	40	45	45	90	52	GN 911-M8-32	204
GN.56656	GN 242-B30-B30-2-SW	30	30	M8	40	45	45	90	52	GN 911-M8-32	156
GN.56676	GN 242-B40-B40-2-SW	40	40	M10	65	70	70	140	77.5	GN 911-M10-50	922
GN.56696	GN 242-B42-B42-2-SW	42	42	M10	65	70	70	140	77.5	GN 911-M10-50	865
GN.56716	GN 242-B45-B45-2-SW	45	45	M10	65	70	70	140	77.5	GN 911-M10-50	812
GN.56736	GN 242-B48-B48-2-SW	48	48	M10	65	70	70	140	77.5	GN 911-M10-50	748
GN.56756	GN 242-B50-B50-2-SW	50	50	M10	65	70	70	140	77.5	GN 911-M10-50	682

Connecting clamps