

Throttle valve, for water emulsions and water Type MG

Nominal sizes 10, 16, 25, 32

Series 4X

Maximum operating pressure 420 bar

Maximum flow 580 L/min



H/A/D 6715/00

Type MG

Overview of contents

Contents	Page
Features	1
Ordering details	1
Function, section, symbol	2
Technical data	2
Characteristic curves	3, 4
Unit dimensions	5 to 7

Features

- For subplate mounting
- For threaded connections
- As a cartridge valve
- 2 adjustment elements
 - Hand wheel
 - Square spanner flat

Ordering details

-MG		0-4X/		*
Oil in water emulsion	= E			Further details in clear text
Water	= W			
Throttle valve	= MG			No code = NBR seals suitable for mineral oil (HL, HLP to DIN 51 524) (other seals on request) ⚠ Attention! The compatibility of the seals and pressure fluid has to be taken into account!
Nominal size 10	= 10			
Nominal size 16	= 16			
Nominal size 25	= 25			
Nominal size 32	= 32			
Subplate mounting		= P		4X = Series 40 to 49 (40 to 49: unchanged installation and connection dimensions)
Threaded connections		= G		
Cartridge valve		= K		
Adjustment element				
Hand wheel		= 1		
Square spanner flat		= 2		
without compression spring			= 0	

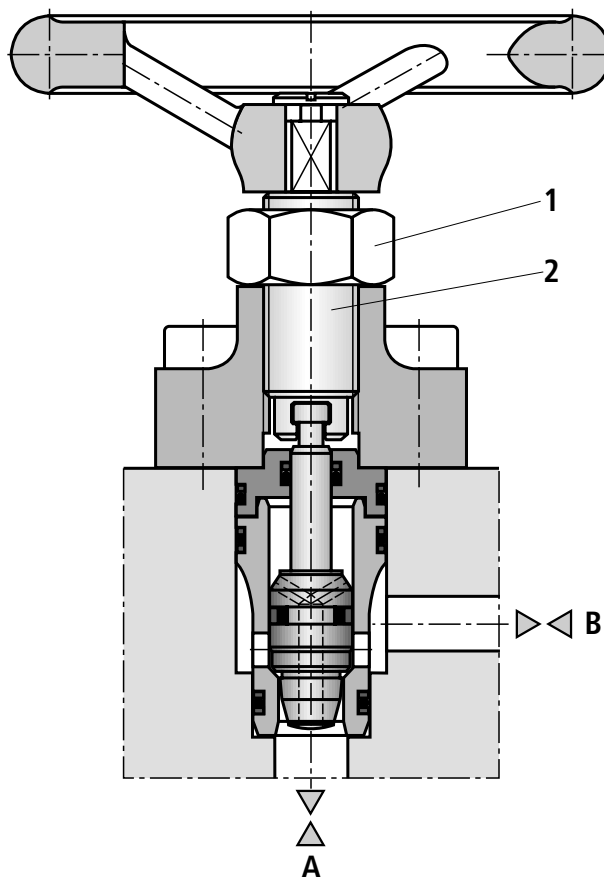
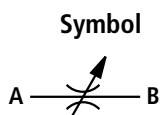
Function, section, symbol

The type MG throttle valves are used to easily adjust and isolate an oil flow in both directions.

The valve basically comprises of a locknut (1) and a spindle (2).

To adjust the flow firstly loosen the locknut (1) and then rotate the spindle (2).

Clockwise rotation → throttling.



Type .-MG . K10-4X/...

Technical data (for applications outside these parameters, please consult us!)

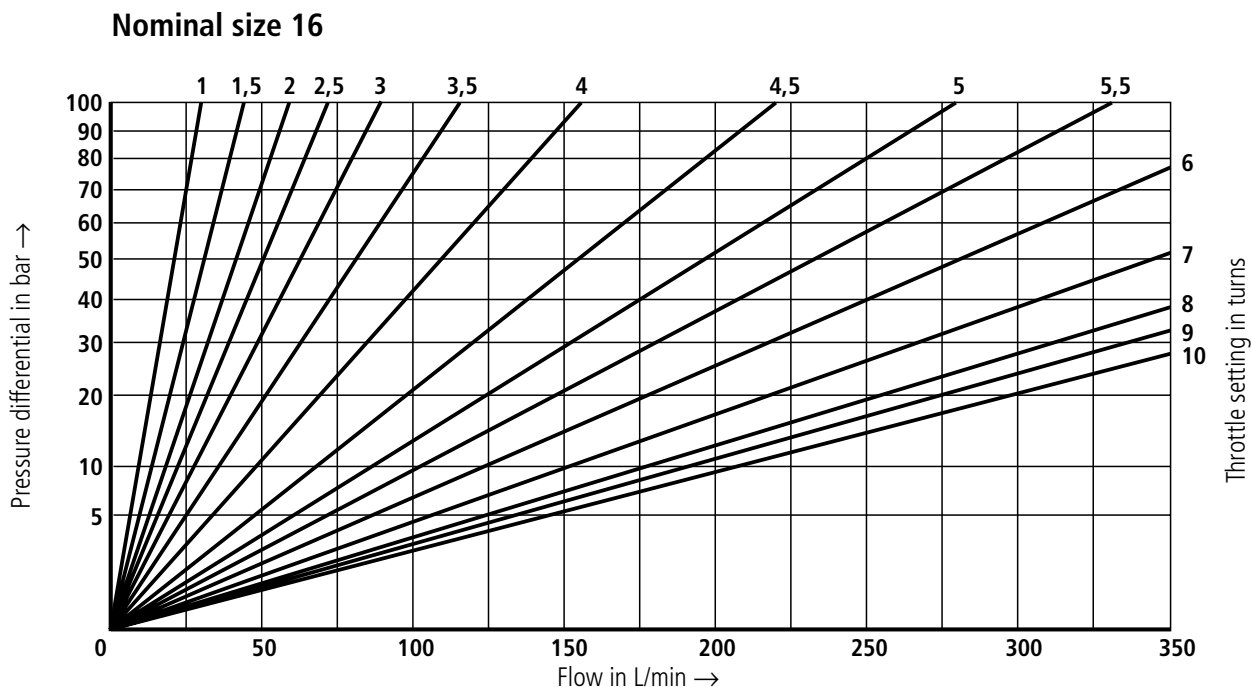
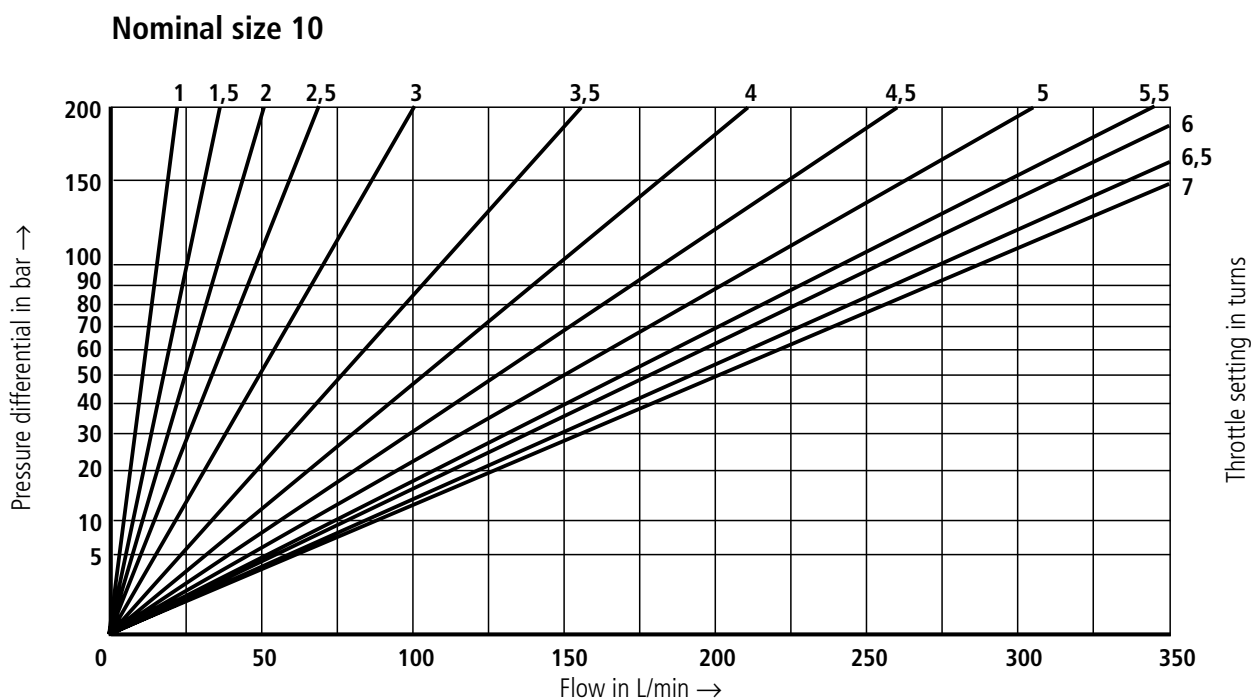
General

Installation		Optional
Ambient temperature range	°C	- 30 to + 50

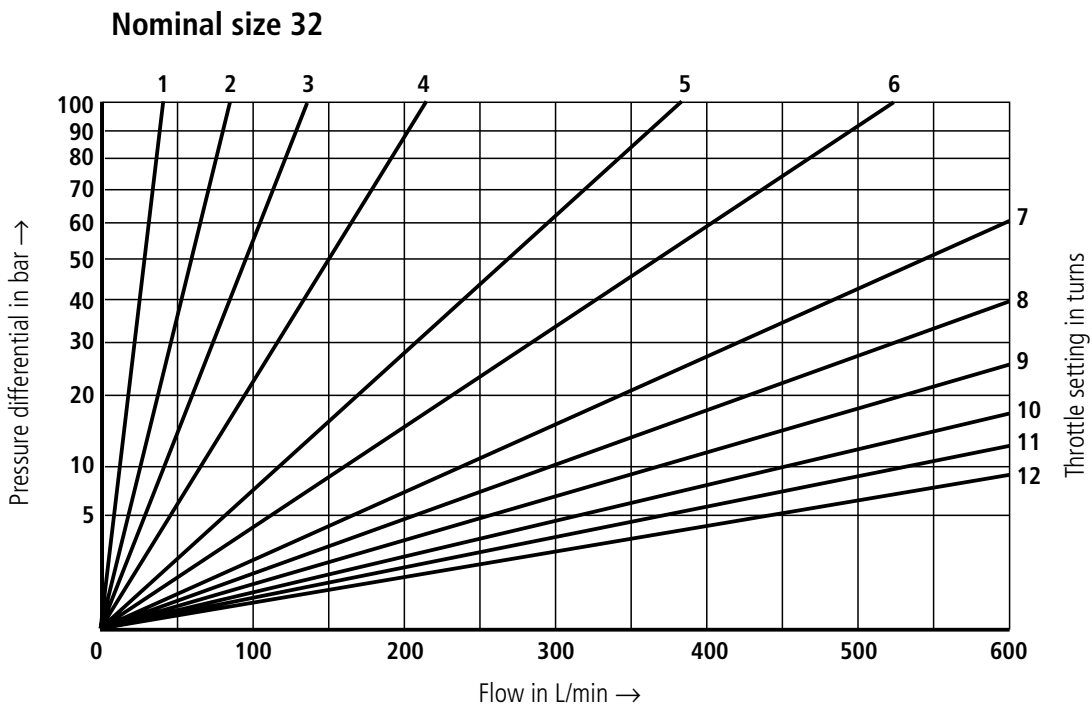
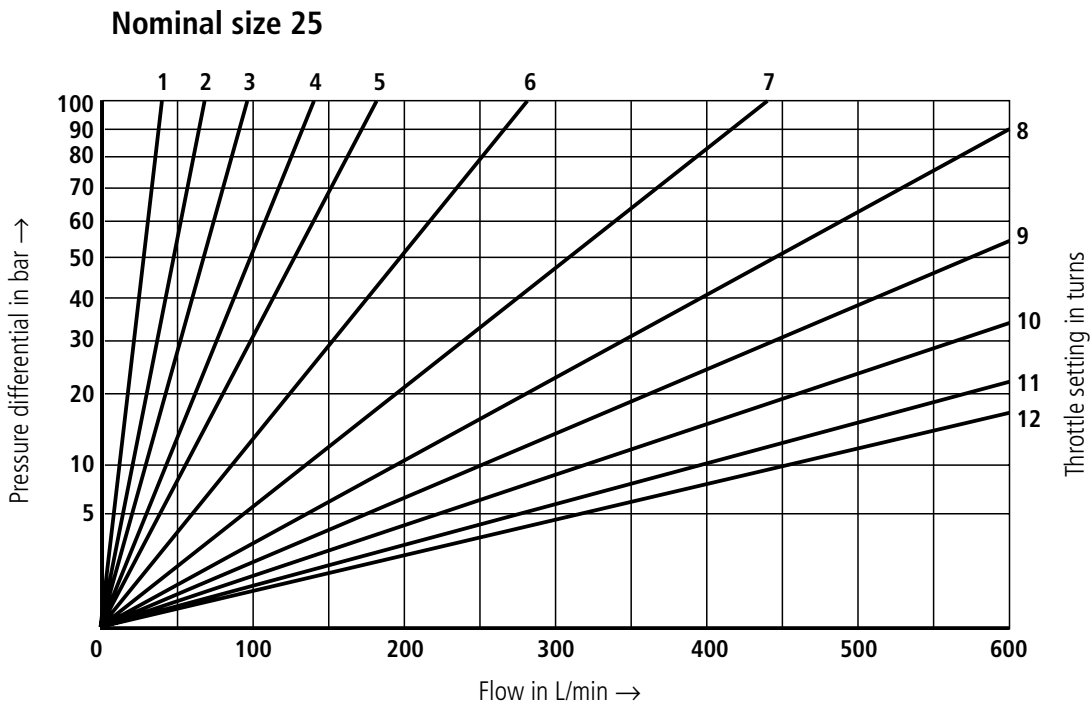
Hydraulic

Nominal pressure	bar	420			
Pressure fluid		Oil in water emulsion; water			
Pressure fluid temperature range	°C	5 to 55			
Viscosity range	mm ² /s	0.6 to 1.6			
Maximum flow	NS	10	16	25	32
	L/min	60	150	350	580
Degree of fluid contamination		Maximum permissible degree of contamination of the pressure fluid is to NAS 1638 class 9. We, therefore recommend a filter with a minimum retention rate of $\beta_{10} \geq 75$.			

Characteristic curves (measured at $\nu = 0.8 \text{ mm}^2/\text{s}$ and $\vartheta = 40 \text{ }^\circ\text{C}$)

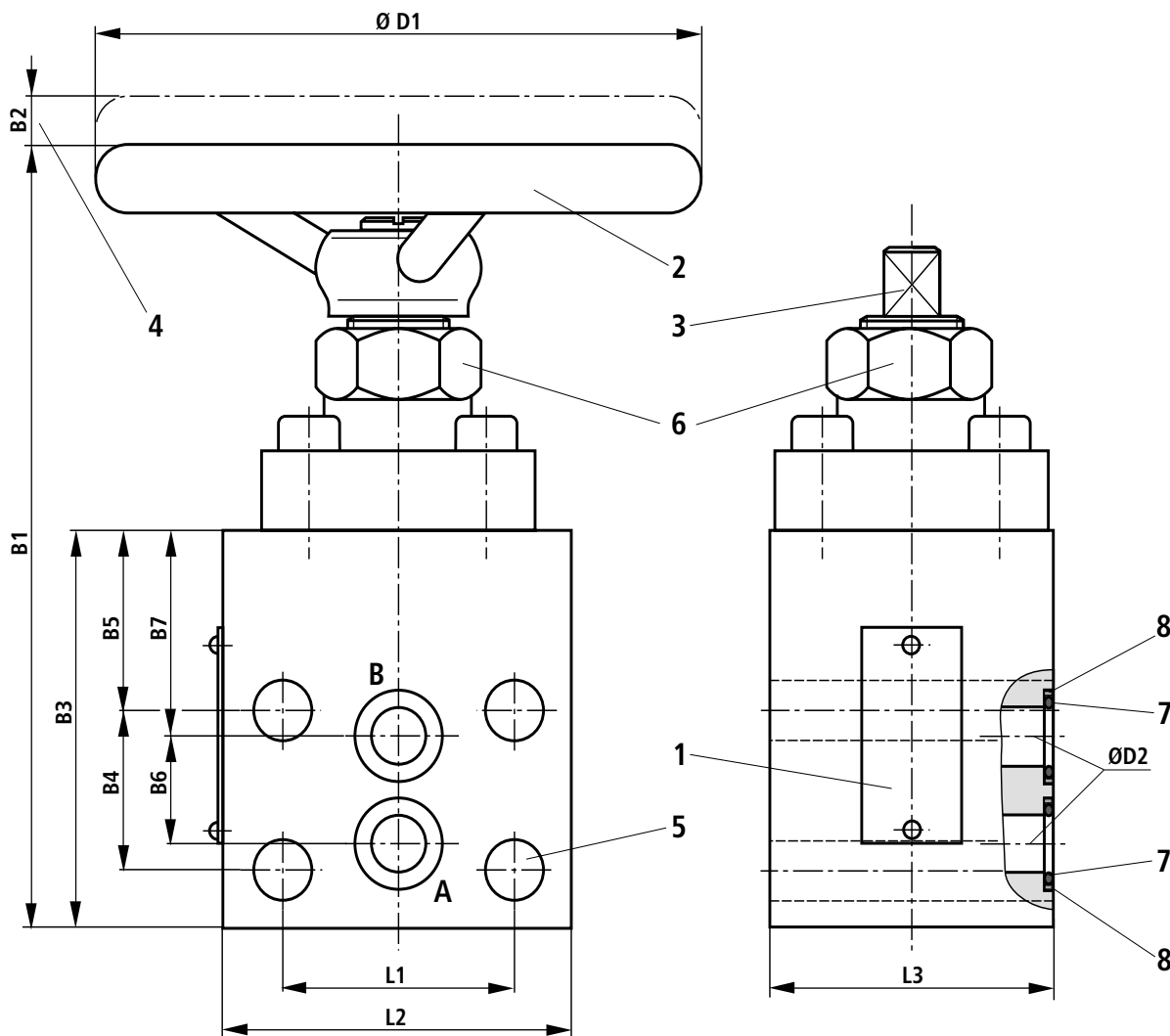


Characteristic curves (measured at $v = 0.8 \text{ mm}^2/\text{s}$ and $\vartheta = 40 \text{ }^\circ\text{C}$)

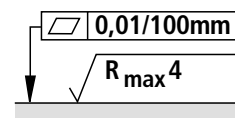


Unit dimensions: for subplate mounting

(Dimensions in mm)



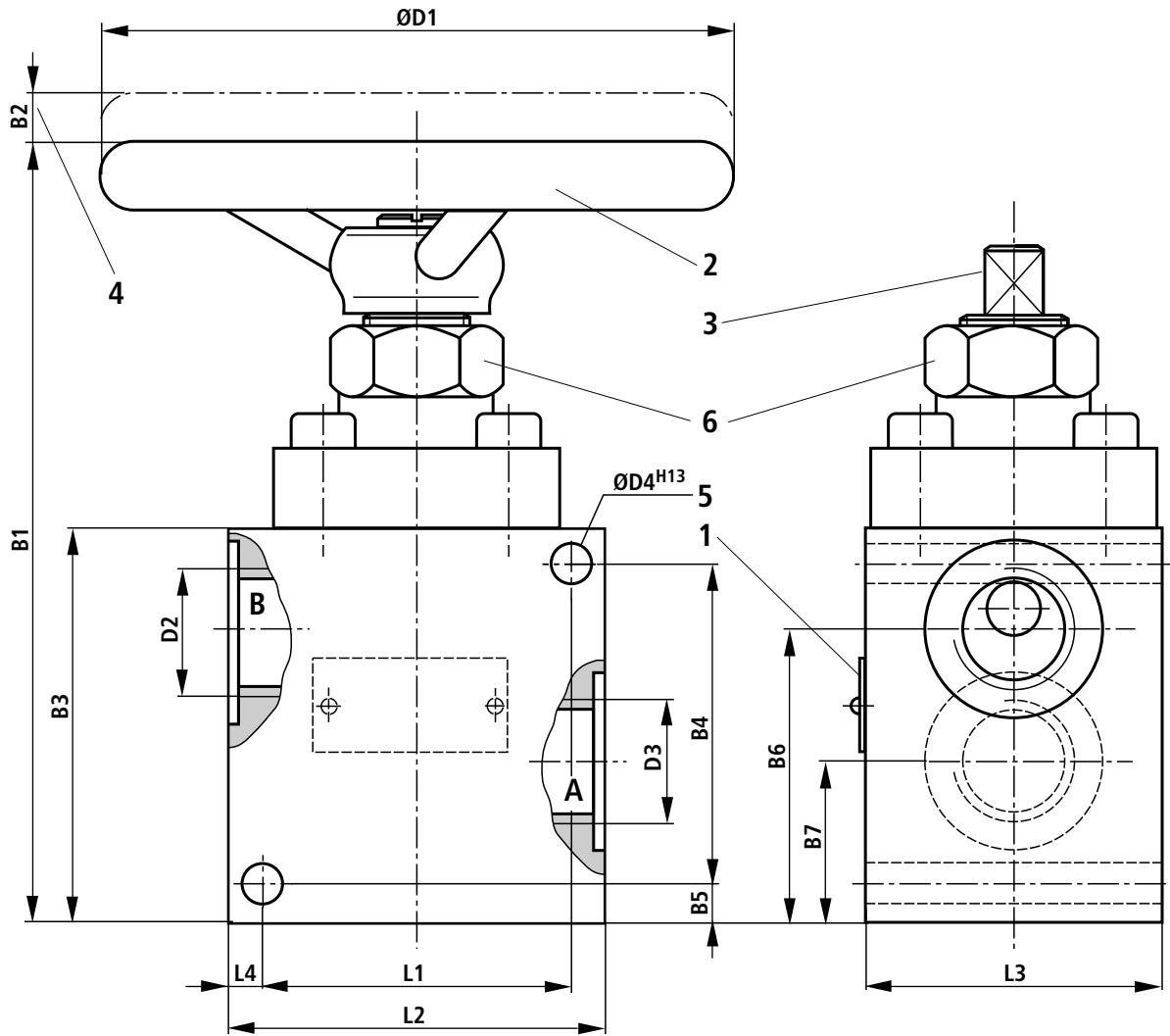
- 1 Name plate
- 2 Adjustment element "1"
- 3 Adjustment element "2"
- 4 Stroke (see dimension table below)
- 5 Valve fixing holes
- 6 Locknut (see dimension table below)
- 7 2 x O-rings (see dimension table below)
- 8 2 x back-up rings (see dimension table below)



Required surface finish of mating piece

NS	L1	L2	L3	B1	B2	B3	B4	B5	B6	B7	Ø D1	Ø D2	Pos.6
10	46	70	57	167	11	75	30	33	20	38	125	10	30 A/F
16	65	85	67	181	16	88	40	32	30	37	125	16	30 A/F
25	85	110	95	240	20	110	50	42	40	47	200	25	36 A/F
32	100	135	104	265	22	135	60	49	50	54	200	32	36 A/F

NS	Material No. – Seal kit NBR seals	4 off valve fixing screws DIN 912-10.9	M _A in Nm	Dimensions	
				O-ring	Back-up ring
10	00310940	M10 x 70	75	12.37 x 2.62	17.1/18.2 x 2.4
16	00310941	M12 x 80	130	17.12 x 2.62	21.8/23.2 x 2.4
25	00310942	M16 x 120	310	26.57 x 3.53	33.2/34.6 x 3.1
32	00310943	M20 x 130	620	37.69 x 3.53	44.2/46.1 x 3.1



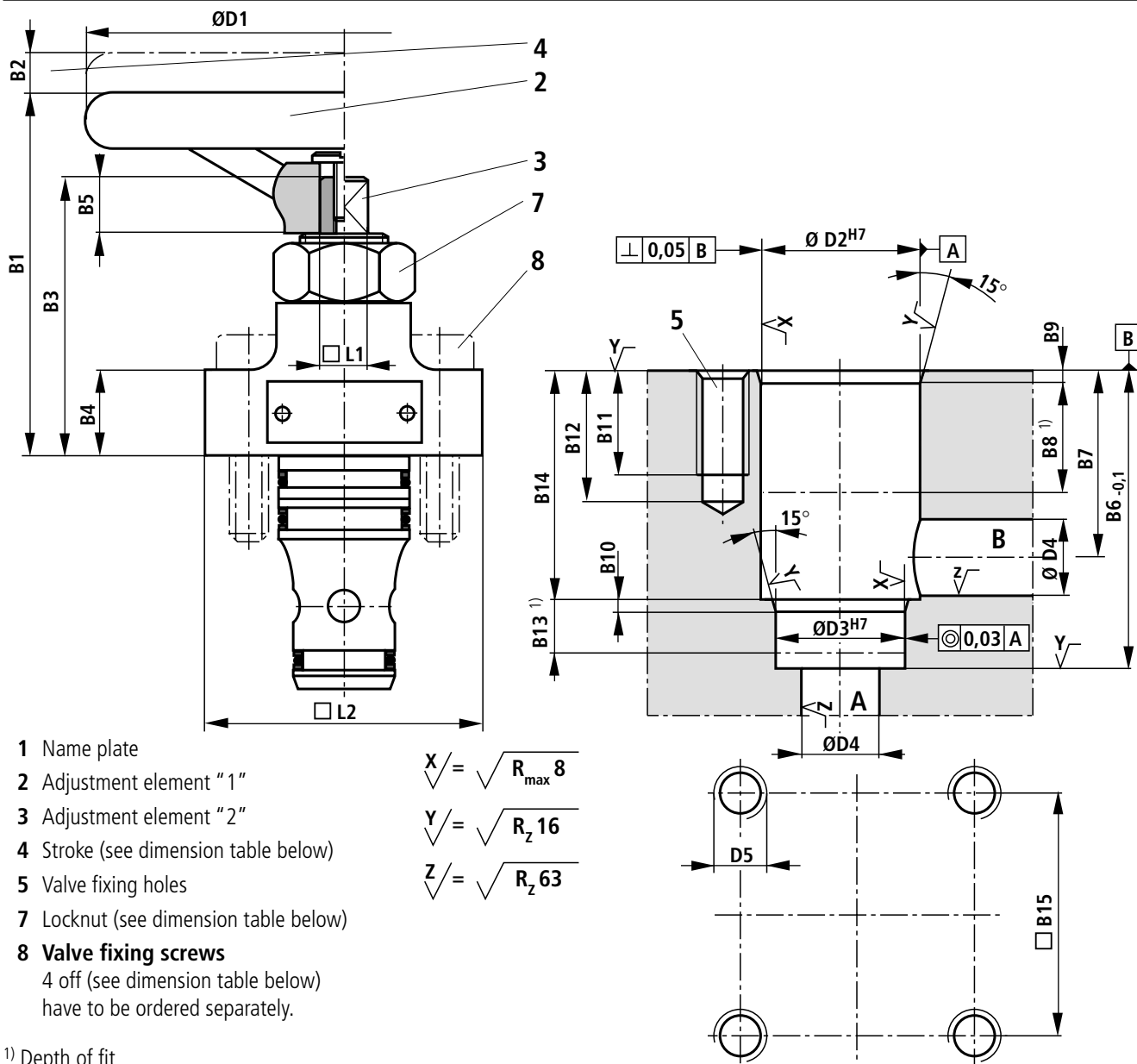
- 1 Name plate
- 2 Adjustment element "1"
- 3 Adjustment element "2"
- 4 Stroke (see dimension table below)
- 5 Valve fixing holes
- 6 Locknut (see dimension table below)

NS	L1	L2	L3	L4	B1	B2	B3	B4	B5	B6	B7	ØD1	D2	D3	ØD4 ^{H13}	Pos. 6
10	60	75	57	7,5	167	11	75	60	7,5	45	20	125	G 1/2	6.6	30 A/F	
16	70	90	67	10	183	16	90	70	10	56	26	125	G 3/4	9	30 A/F	
25	90	115	95	12.5	245	20	115	90	12.5	71	33	200	G 1 1/2	11	36 A/F	
32	110	135	104	12.5	265	22	135	110	12.5	83	37	200	G 1 1/2 14	14	36 A/F	

NS	Material No. – Seal kit NBR seals
10	00310944
16	00310945
25	00310946
32	00310947

Unit dimensions: as a cartridge valve

(Dimensions in mm)



1) Depth of fit

NS	L1	L2	B1	B2	B3	B4	B5	B6	B7	B8	B9	B10	B11	B12	B13	B14	B15	ØD1	ØD2	ØD3	ØD4	D5
10	11	55	92	11	70	16	15	50	30	20	1.5	1.5	15	20	11	37	35	125	22	18	10	M8
16	11	66	93	16	72	21	15	56	34	20	2	2	20	25	11	43	46	125	32	25	16	M10
25	14	90	130	20	107	34	25	72	44	30	2.5	2.5	27	33	12	58	58	200	45	34	25	M16
32	14	102	130	22	107	35	25	85	52	30	2.5	2.5	35	42	13	70	70	200	60	45	32	M16

NS	Material No. – Seal kit NBR seals	Locknut Pos. 7	S.H.C.S., Pos. 8	
			DIN 912-10.9	M _A in Nm
10	00310944	30 A/F	M8 x 30	37
16	00310945	30 A/F	M10 x 35	75
25	00310946	36 A/F	M16 x 50	310
32	00310947	36 A/F	M16 x 60	310

Notes

Mannesmann Rexroth AG
Rexroth Hydraulics

D-97813 Lohr am Main
Jahnstraße 3-5 • D-97816 Lohr am Main
Telefon 0 93 52 / 18-0
Telefax 0 93 52 / 18-23 58 • Telex 6 89 418-0
eMail documentation@rexroth.de
Internet www.rexroth-hydraulics.com

Mannesmann Rexroth Limited

Cromwell Road, St Neots,
Cams, PE19 2ES
Tel: 0 14 80/22 32 56
Fax: 0 14 80/21 90 52
E-mail: info@rexroth.co.uk

The specified data is for product description purposes only and may not be deemed to be guaranteed unless expressly confirmed in the contract.

All rights reserved – Subject to revision
