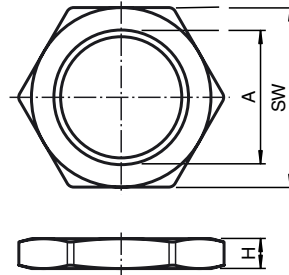




Dimensions



Technical data

Mechanical specifications

Material	brass, nickel-plated
Dimensions	A = PG9 H = 2.8 mm SW = 18 mm

Model Number

LOCKNUT PG9 NICKEL BRASS

Nut, nickel-plated brass

Release date: 2014-06-26 14:35 Date of issue: 2014-06-26 002033_eng.xml

Refer to "General Notes Relating to Pepperl+Fuchs Product Information".

Pepperl+Fuchs Group
www.pepperl-fuchs.com

USA: +1 330 486 0001
fa-info@us.pepperl-fuchs.com

Germany: +49 621 776 4411
fa-info@de.pepperl-fuchs.com

Singapore: +65 6779 9091
fa-info@sg.pepperl-fuchs.com