

## Pi 3 click shield

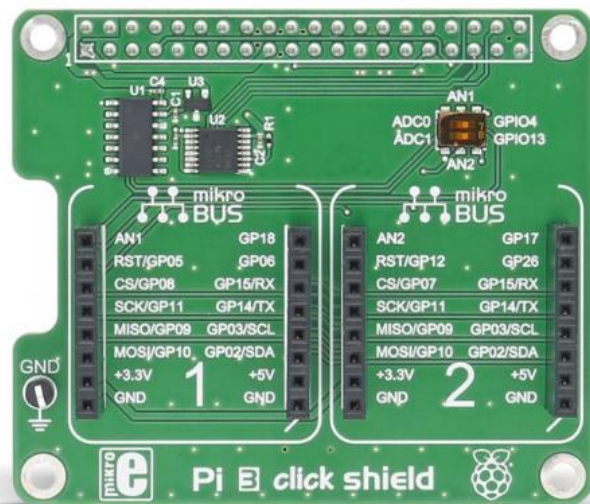
PID: MIKROE-2756

### Pi 3 click shield

By adding two mikroBUS™ sockets to your Raspberry Pi 3, the **Pi 3 click shield** allows you to experiment with [hundreds of click boards™](#) from our ever expanding range.

Wi-Fi, Lora, Bluetooth, GSM, GPS, RFID, OLED, speech recognition, environmental sensors, movement sensors, biosensors, LEDs, relays, — you name it, we got it!

The **Pi 3 click shield** is compatible with Raspberry Pi 3 model B, 2 B, 1 A+ and B+.



# Make your Raspberry Pi® compatible with click boards™

---

By adding two mikroBUS™ sockets to your Raspberry Pi 3, the **Pi 3 click shield** allows you to experiment with [hundreds of click boards™](#) from our ever expanding range.

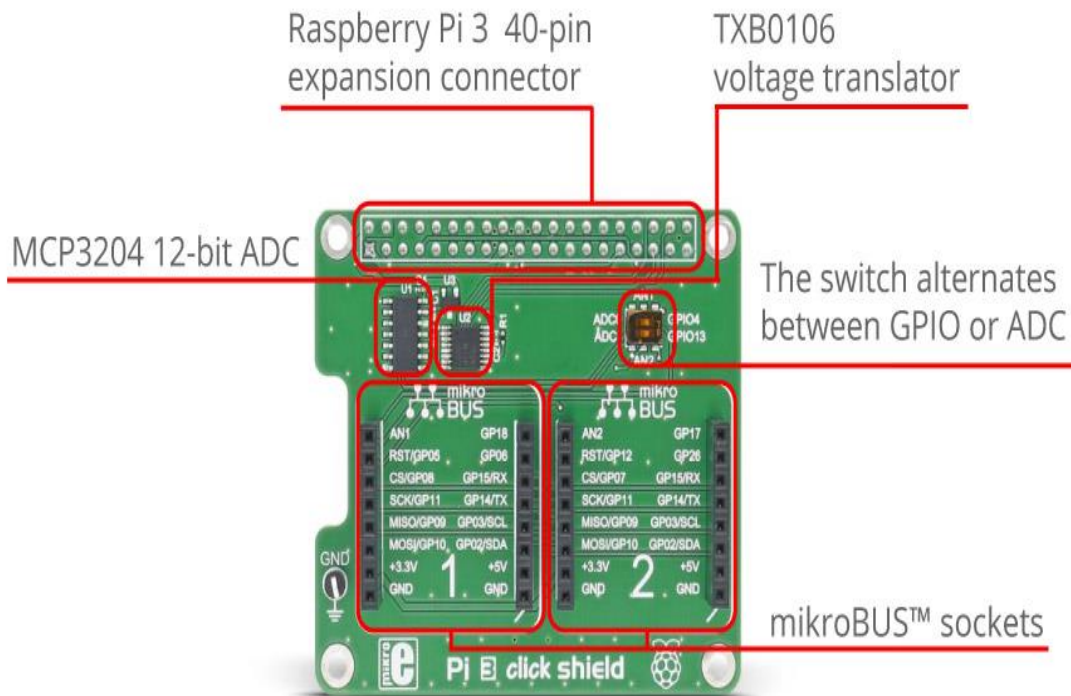
Wi-Fi, Lora, Bluetooth, GSM, GPS, RFID, OLED, speech recognition, environmental sensors, movement sensors, biosensors, LEDs, relays, — you name it, we got it!

The **Pi 3 click shield** is compatible with Raspberry Pi 3 model B, 2 B, 1 A+ and B+.

The shield has an onboard ADC which enables the measuring of the analog levels. Since the Raspberry Pi® doesn't have an analog pin on the expansion connector, by adding an ADC we've enabled the usage of any click board™ from our offer.

ADC onboard is [MCP3204](#) 12-bit Analog-to-Digital Converter from Microchip. It also has a switch selector which allows the pin on the mikroBUS™ to be directed to GPIO or to the ADC. Because of the reference voltage which is 4.096V, the ADC works on 5V, and since the Raspberry Pi® GPIO voltage level is 3.3V, voltage translator is needed. That's why we've included [TXB0106](#) voltage translator from Texas Instruments.

This shield has two mikroBUS™ sockets so that you can add hundreds click boards™ from our ever expanding range.



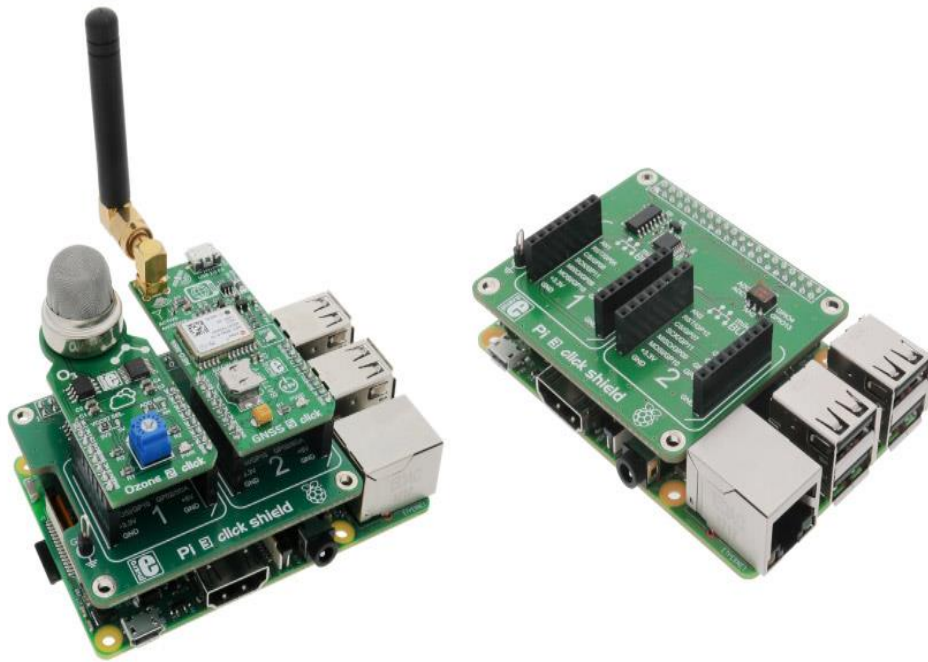
The package includes single 2x20 female sockets and 2x12mm distance with 2 screws.

Software examples for click boards™ are available on Libstock, giving you a repository of working code - a great starting point for your own projects.

## Pi 3 Model B pinout

---

Pi 3 Model B has the same layout as the Pi 1 Model A+, Pi 1 B+ and Pi 2 Model B.



Picture on the right shows Pi 3 click shield connected to the Raspberry Pi® 3 model B, picture on the left shows the connected shield along with two click boards™: Ozone 2 and GNSS 5 click.

## SPECIFICATION

---

<b>Type</b>	Shield
<b>Applications</b>	Pi 3 click shield allows you to use click boards on your Raspberry Pi®
<b>On-board modules</b>	Two mikroBUS™ sockets, MCP3204 12-bit Analog-to-Digital converter (ADC), 4.096V reference voltage
<b>Key Features</b>	GND Oscilloscope probe pin. Four mounting holes.
<b>Input Voltage</b>	3.3V or 5V
<b>Compatibility</b>	Raspberry Pi