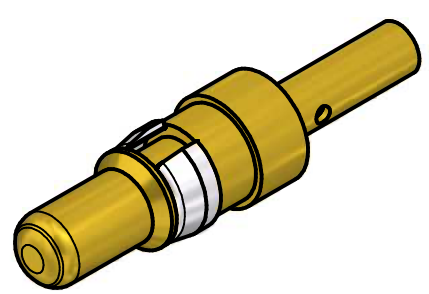


STRIPPING DIMENSIONS



NOTES:

- 1. MATERIAL: COPPER ALLOY
- 2. PLATING:
 - (b) ITEM 1+2: GOLD FLASH over NICKEL
 - ITEM 3: NICKEL PLATED
- 3. CRIMPING: USE CRIMP TOOL 360X10409X
 WITH TOOL INSERT 360X20029X
 SELECTOR SETTINGS: 3 FOR AWG 16
 2 FOR AWG 18
 2 FOR AWG 20

Directive 2002/95/EC RoHS compliant

(b)

THIS DRAWING MAY NOT BE COPIED OR REPRODUCED IN ANY WAY, AND MAY NOT BE PASSED ON TO A THIRD PARTY WITHOUT WRITTEN PERMISSION. OWNERSHIP AND COPYRIGHT OF CONEC GmbH	DO NOT ALTER CAD DRAWING BY HAND			finish:	tolerance	 dim. in mm	scale:	5:1			
				see notes	ISO 2768-m			material:	see notes		
						date	name	title: HIGH POWER CONTACT MALE CRIMP VERSION 10A D-SUB COMBINATION			
					drawn	25.07.06	Lehmenkühler				
					appd.	26.07.06	Kühle				
					norm						
				d-old			dwg no:	Inventor 10	DIN-A4		
2 x b	Ä3854	19.01.2011	K.H.				13K1A1834		sh: 1		
a	Origin						part no:		131A11019X		
rev.	description	date	name								