

Customer Information Sheet

IF IN DOUBT - ASK

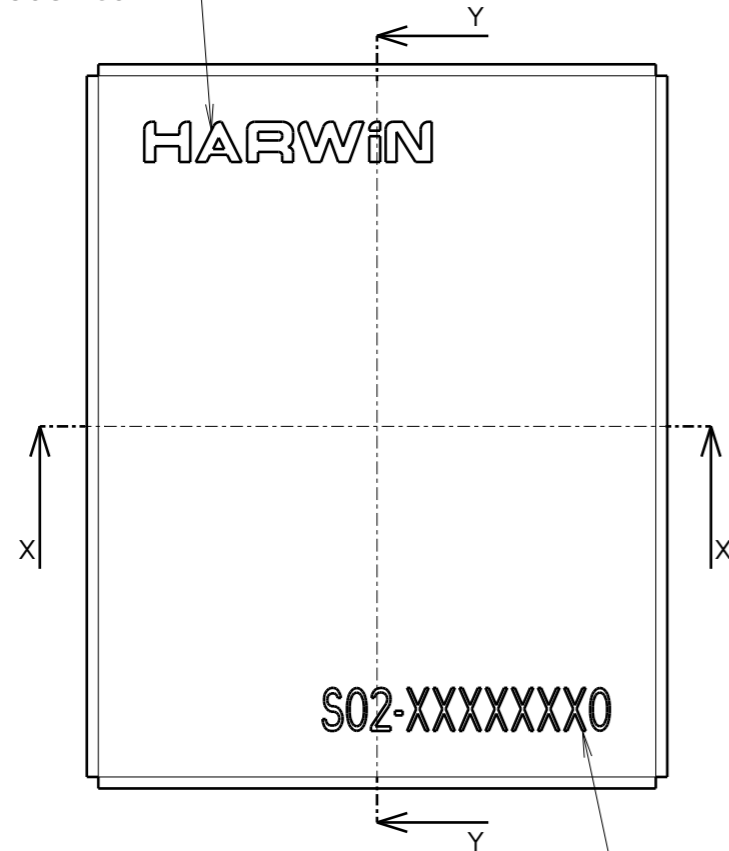
©

NOT TO SCALE

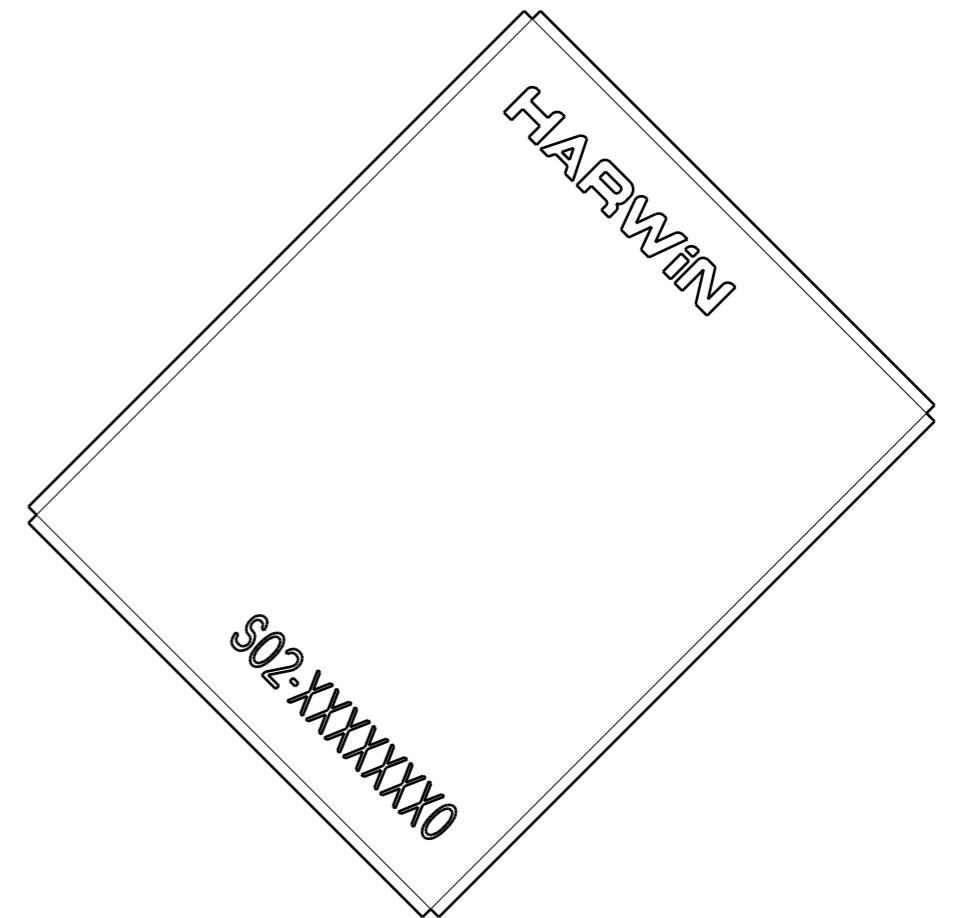
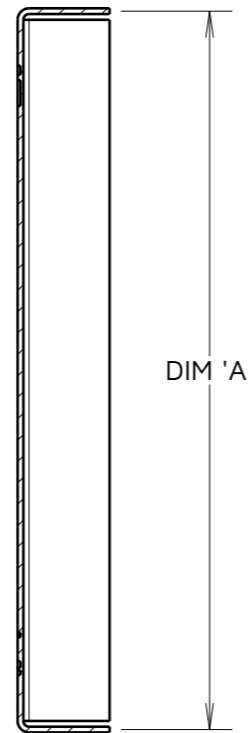
THIRD ANGLE PROJECTION

ALL DIMENSIONS IN mm

EMBOSSED HARWIN LOGO
NOT THROUGH CUT.



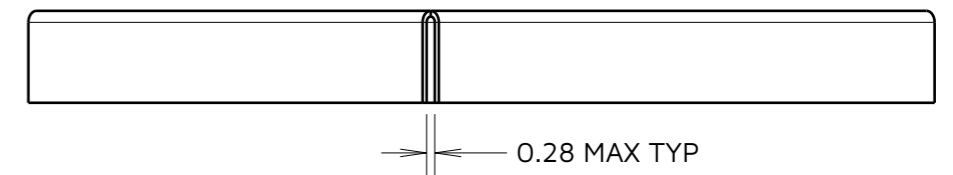
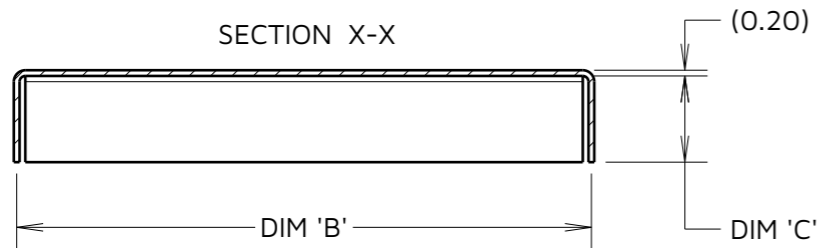
SECTION Y-Y



VIEW SHOWING CORNER OF
THE SHIELD CAN

EMBOSSED PART NUMBER (SEE ORDER CODE).
NO THROUGH CUT.

SECTION X-X



PART No.	DIM 'A'	DIM 'B'	DIM 'C'
S02-20150300	20.0	15.0	3.0
S02-25200300	25.0	20.0	3.0
S02-30200250	30.0	20.0	2.5



ORDER CODE:

S02-XXXXXXXXX0

SIZE:

DIM 'A' = LENGTH

DIM 'B' = WIDTH

DIM 'C' = HEIGHT

FINISH:

0 = UNPLATED FINISH

AB	7	12.02.24	32031
NAME	ISS.	DATE	CN/CO
APPROVED:	A.BOXALL		
CHECKED:	A.YEOMANS		
DRAWN:	S.BENNETT		
ASSEMBLY DRG:			

NOTES:

- DIM 'C', HEIGHT OF THE CAN IS FROM THE BOTTOM EDGE TO THE INSIDE OF THE TOP FACE.
- BOTH DIM 'A' AND 'B' ARE FROM THE CENTRE OF THE MATERIAL THICKNESS.
- SHIELD CANS ARE SUPPLIED IN CUT STRIPS OF TAPE. FOR PACKAGING DETAILS, SEE SHEET 3.
- SHIELD CAN IS RECOMMENDED FOR USE WITH RFI SHIELD CLIPS: S0971-46R, S0981-46R, S0991-46R, S1001-46R AND S1721-XXR.

HARWIN

www.harwin.com

TOLERANCES

X. = ±1mm
 X.X = ±0.50mm
 X.XX = ±0.20mm
 X.XXX = ±0.01mm
 ANGLES = ±5°
 UNLESS STATED

THIS DRAWING AND ANY INFORMATION OR DESCRIPTIVE MATTER SET OUT HEREON ARE CONFIDENTIAL AND COPYRIGHT PROPERTY OF THE HARWIN GROUP AND MUST NOT BE DISCLOSED, LOANED, COPIED OR USED FOR MANUFACTURING, TENDERING OR FOR ANY OTHER PURPOSE WITHOUT THEIR WRITTEN PERMISSION.

MATERIAL:

NICKEL SILVER, HALF
 HARD NS106,
 TO BS1653
 0.20mm THICK

TITLE:

EZi SHIELD CAN

DRAWING NUMBER:

S02-XXXXXXXXX0

SHT
 2 OF 3

Customer Information Sheet

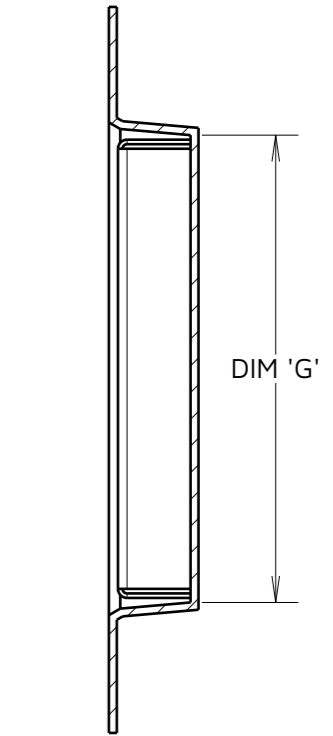
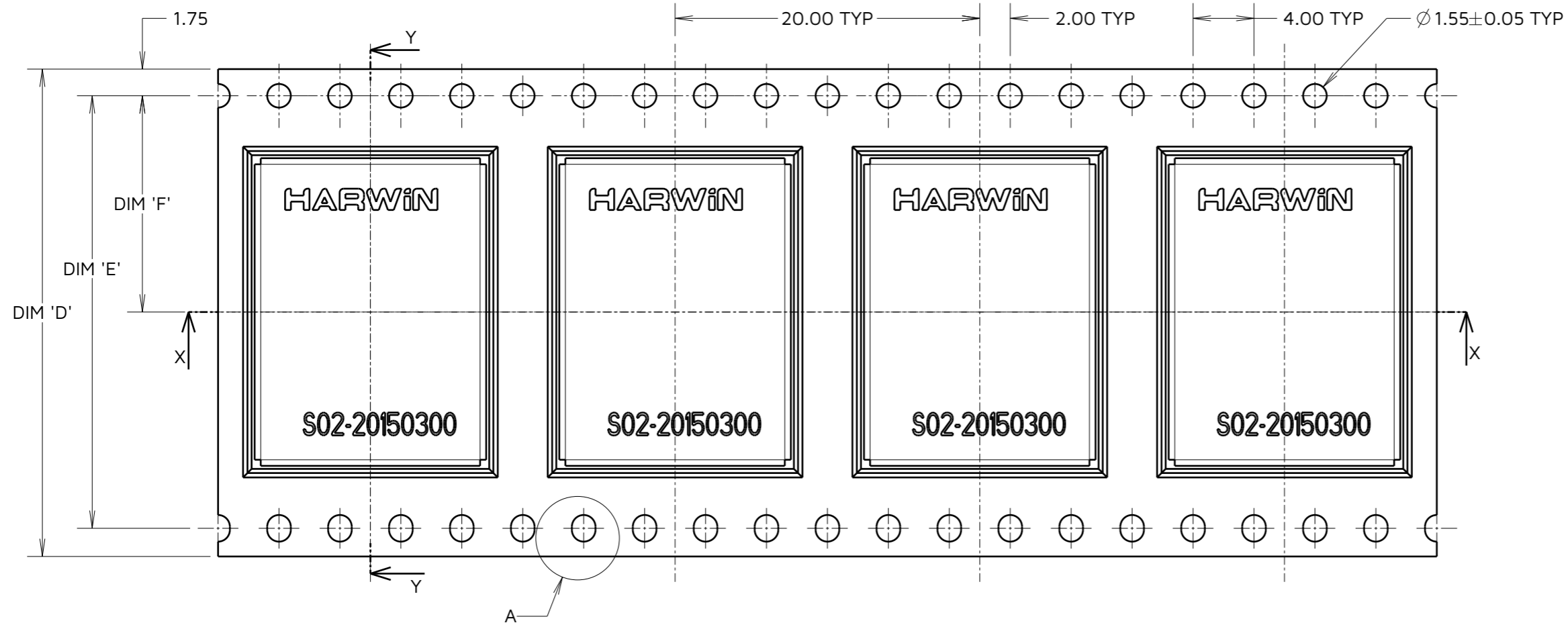
IF IN DOUBT - ASK

©

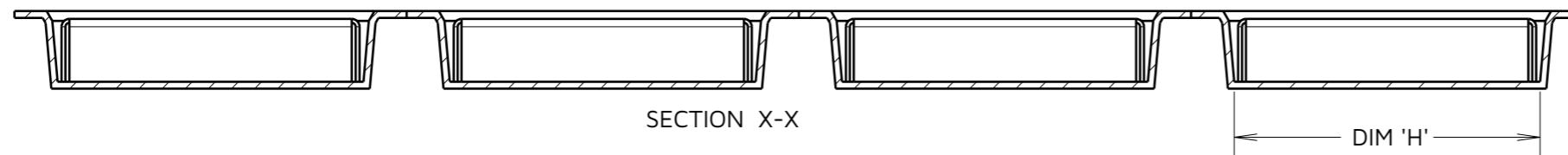
NOT TO SCALE

THIRD ANGLE PROJECTION

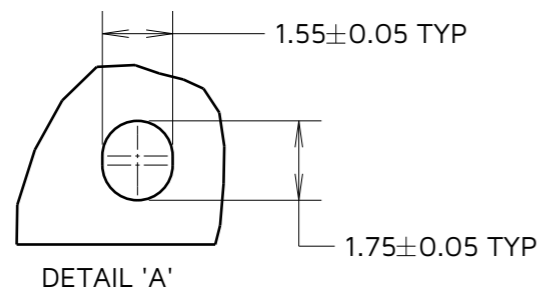
ALL DIMENSIONS IN mm



SECTION Y-Y



SECTION X-X



DETAIL 'A'



ORDER CODE: **S02-XXXXXX0**

SIZE:
 DIM 'A' (SHT 2) = LENGTH
 DIM 'B' (SHT 2) = WIDTH
 DIM 'C' (SHT 2) = HEIGHT

FINISH:
 0 = UNPLATED FINISH

PART No.	DIM 'D'	DIM 'E'	DIM 'F'	DIM 'G'	DIM 'H'
S02-20150300	32.00±0.3	28.40	14.20	20.60	15.60
S02-25200300	44.00±0.3	40.40	20.20	25.45	20.45
S02-30200250	44.00±0.3	40.40	20.20	30.60	20.60

AB	7	12.02.24	32031
NAME	ISS.	DATE	CN/CO
APPROVED:	A.BOXALL		
CHECKED:	A.YEOMANS		
DRAWN:	S.BENNETT		
ASSEMBLY DRG:			

NOTES:

- COMPONENTS ARE SUPPLIED IN STRIPS OF TAPE. SUPPLIED QUANTITY MAY CONSIST OF MORE THAN ONE STRIP. STRIP LENGTH MAY VARY.
- LARGE QTY'S MAY BE SHIPPED ON A REEL AND MAY NOT HAVE A LEADER.
- S02-20150300 SHOWN FOR ILLUSTRATIVE PURPOSES. SEE TABLE AND ORDER CODE FOR DIMENSIONS.

HARWIN

www.harwin.com

TOLERANCES
 X. = ±1mm
 X.X = ±0.50mm
 X.XX = ±0.20mm
 X.XXX = ±0.01mm
 ANGLES = ±5°
 UNLESS STATED

THIS DRAWING AND ANY INFORMATION OR DESCRIPTIVE MATTER SET OUT HEREON ARE CONFIDENTIAL AND COPYRIGHT PROPERTY OF THE HARWIN GROUP AND MUST NOT BE DISCLOSED, LOANED, COPIED OR USED FOR MANUFACTURING, TENDERING OR FOR ANY OTHER PURPOSE WITHOUT THEIR WRITTEN PERMISSION.

MATERIAL:
 SEE SHEET 2

TITLE:
 EZi SHIELD CAN

DRAWING NUMBER:
 S02-XXXXXX0

SHT
 3
 OF
 3