

| | | |
|-------------------|---------------------------------------|--|
| U.I. Lapp GmbH | <h1>DATASHEET</h1> |  |
| | EPIC® MC Module: Universal Bus | 10390700 14.11.2013 |

The mixed assembly guarantees high flexibility. For applications in mechanical and plant engineering, for printing machines and slide-in technology.

The mix of different functions in one plug guarantees high flexibility

Assembly of individual connectors, suitable for different applications



Automation



Industrial machinery and plant engineering



Wind Energy



Info

Power and signal modules can be used together in one housing

Application range

Plant engineering

Light & sound technology

Control engineering

Remark

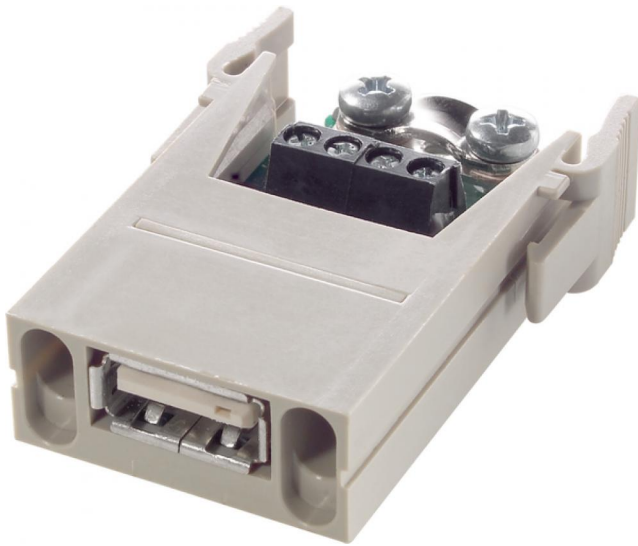
Photographs are not to scale and do not represent detailed images of the respective products.

Technical Data

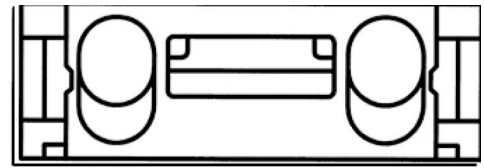
| | |
|--------------------------------|---|
| Article: | MCS 4 BS |
| Version: | female |
| Contacts: | 4 + shield |
| Pieces / PU: | 5 |
| Rated voltage (V): | 30 V |
| Rated current (A): | 1 A |
| Contacts: | Copper alloy, gold-plated |
| Number of contacts: | 4 + shield |
| Termination methods: | Screw termination: 0.08 - 1.5 mm ² |
| Cycle of mechanical operation: | 100 |
| Temperature range: | -20 °C až +85 °C |
| Degree of soiling: | 3 |

| | | |
|--------------------|--|-------|
| Product Management | Document: EPIC® MC Module: Universal Bus | 1 / 2 |
|--------------------|--|-------|

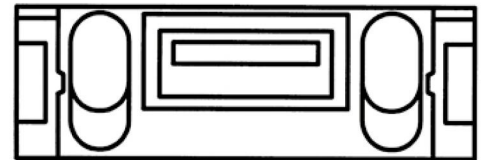
| | | |
|-------------------|---------------------------------------|--|
| U.I. Lapp GmbH | DATASHEET |  LAPP GROUP |
| | EPIC® MC Module: Universal Bus | 10390700 14.11.2013 |



M



F



| | | |
|--------------------|--|-------|
| Product Management | Document: EPIC® MC Module: Universal Bus | 2 / 2 |
|--------------------|--|-------|