

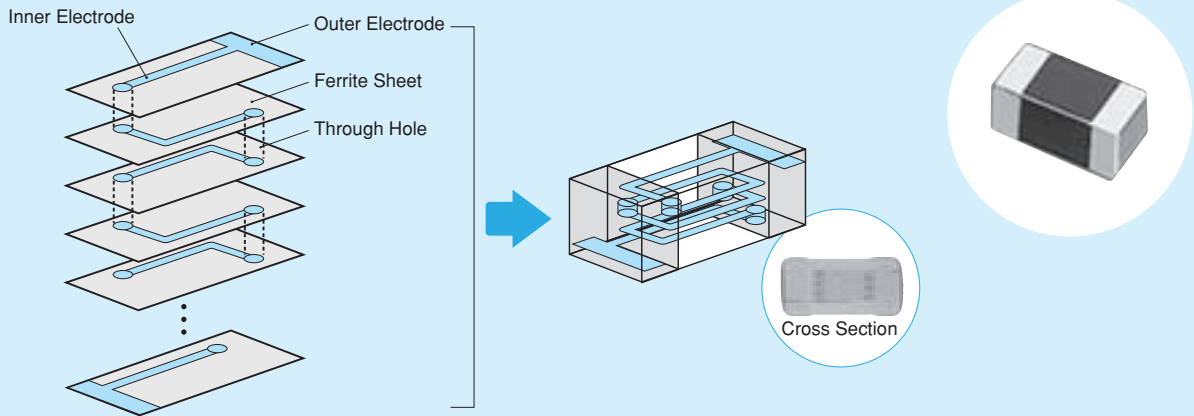


Chip Ferrite Bead

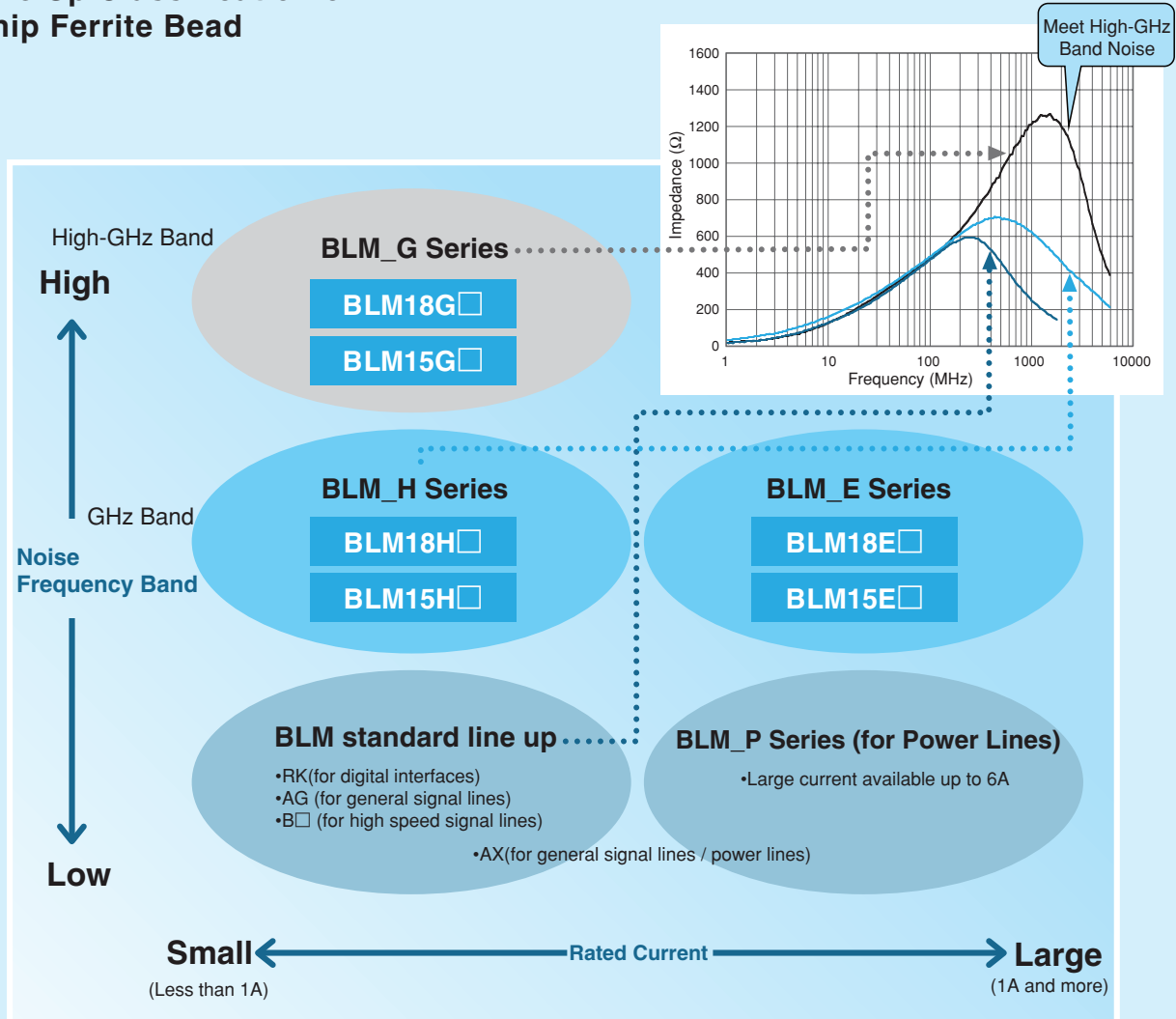
Series Introduction	14
Part Numbering	16
Series Line Up	17
Product Detail	22
⚠Caution/Notice	90
Soldering and Mounting	91
Packaging	95
Design Kits	96

BL Series Introduction

● Example of Chip Ferrite Bead BLM Series Structure



● Line Up Classification of Chip Ferrite Bead

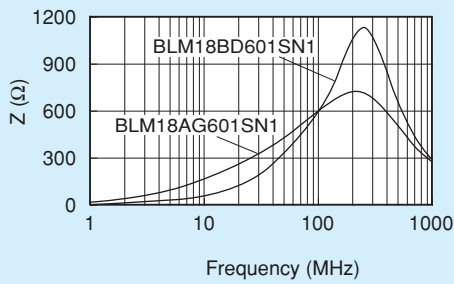


△Note • Please read rating and △CAUTION (for storage, operating, rating, soldering, mounting and handling) in this catalog to prevent smoking and/or burning, etc.
• This catalog has only typical specifications. Therefore, please approve our product specifications or transact the approval sheet for product specifications before ordering.

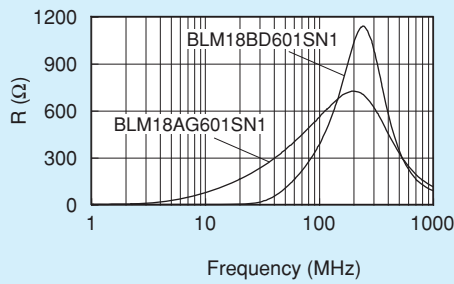
●Difference between BLM A type and B type (HG type vs HD/HB/HE type)

A type: Impedance curve rises from low frequency range. Suppress noise in wide frequency range.
 B type: Impedance curve rises sharply. Less damage to signal waveforms.

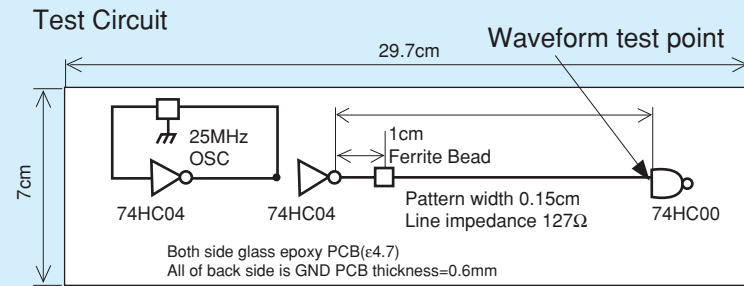
■Comparison of Impedance Curve



■Comparison of Resistance Element

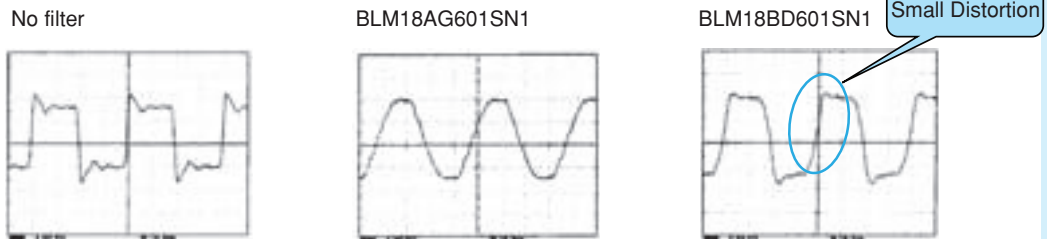


■Comparison of Test Effect (25MHz)

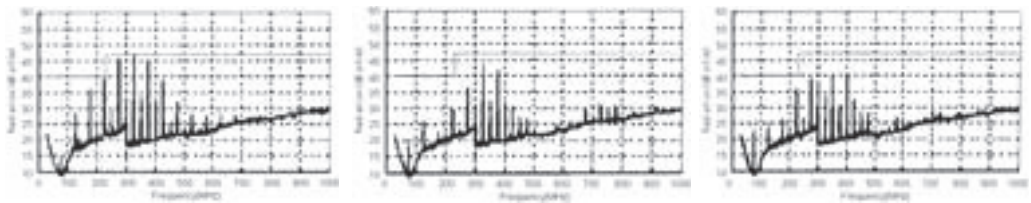


BLM_B Series has less damage to high speed signal waveform.

Waveform



Spectrum



Spectrum has been reduced from low frequency range.

Noise frequency has been reduced without reducing signals of low frequency.

△Note • Please read rating and △CAUTION (for storage, operating, rating, soldering, mounting and handling) in this catalog to prevent smoking and/or burning, etc.
 • This catalog has only typical specifications. Therefore, please approve our product specifications or transact the approval sheet for product specifications before ordering.

BL Chip Ferrite Bead Part Numbering

(Part Number) **BL M 18 AG 102 S N 1 D**
 ① ② ③ ④ ⑤ ⑥ ⑦ ⑧ ⑨

① Product ID

Product ID	
BL	Chip Ferrite Beads

② Type

Code	Type
A	Array Type
M	Ferrite Bead Single Type

③ Dimensions (L×W)

Code	Dimensions (L×W)	EIA
02	0.4×0.2mm	01005
03	0.6×0.3mm	0201
15	1.0×0.5mm	0402
18	1.6×0.8mm	0603
2A	2.0×1.0mm	0804
21	2.0×1.25mm	0805
31	3.2×1.6mm	1206
41	4.5×1.6mm	1806

④ Characteristics/Applications

Code *1	Characteristics/Applications	Series
AG	for General Use	BLM03/15/18/21, BLA2A/31
AX		BLM02/03/15
TG		BLM18
BA	for High-speed Signal Lines	BLM15/18
BB		BLM03/15/18/21, BLA2A
BC		BLM03/15
BD		BLM03/15/18/21, BLA2A/31
PD		BLM15
PG	for Power Supplies	BLM03/15/18/21/31/41
PX		BLM03/15
KG	for Power Supplies (Low DC Resistance Type)	BLM18
SG		
RK	for Digital Interface	BLM18/21
HG	for GHz Band General Use	BLM03/15/18
EG	for GHz Band General Use (Low DC Resistance Type)	BLM15/18
HB	for GHz Band High-speed Signal Lines	BLM15/18
HD		BLM03/15/18
HE		BLM18
HK	for GHz Band Digital Interface	BLM18
GA	for High-GHz Band High-speed Signal Lines	BLM15
GG	for High-GHz Band General Use	BLM15/18

*1 Frequency characteristics vary with each code.

⑨ Packaging

Code	Packaging	Series
K	Embossed Taping (ø330mm Reel)	BLM21 *1/31/41
L	Embossed Taping (ø180mm Reel)	
B	Bulk	All Series
J	Paper Taping (ø330mm Reel)	BLM03/15/18 *3/21 *2, BLA2A/31
D	Paper Taping (ø180mm Reel)	BLM02/03/15/18/21 *2, BLA2A/31

*1 BLM21BD222SN1/BLM21BD272SN1 only. *2 Except BLM21BD222SN1/BLM21BD272SN1 *3 Except BLM18T

⑤ Impedance

Expressed by three figures. The unit is in ohm (Ω) at 100MHz. The first and second figures are significant digits, and the third figure expresses the number of zeros which follow the two figures.

⑥ Electrode

Expressed by a letter.

Ex.)	Code	Electrode
	S/T	Sn Plating
	A	Au Plating

⑦ Category

Code	Category
N	Standard Type

⑧ Number of Circuits

Code	Number of Circuits
1	1 Circuit
4	4 Circuits

△Note • Please read rating and △CAUTION (for storage, operating, rating, soldering, mounting and handling) in this catalog to prevent smoking and/or burning, etc.
 • This catalog has only typical specifications. Therefore, please approve our product specifications or transact the approval sheet for product specifications before ordering.

Chip Ferrite Bead
Chip EMIFIL®
Chip Common Mode Choke Coil
Block Type EMIFIL®
Microwave Absorber

BL Chip Ferrite Bead Series Line Up

Size Code (Inch)	Thickness (mm)	Type	Part Number	Impedance		Rated Current	New	Kit	≥1A	GHz	F _{low}	R _{efflow}	
				at 100MHz/20°C	at 1GHz/20°C								
01005	0.2	Universal Type [Power lines/Signal lines]	p22 BLM02AX100SN1	10ohm±5ohm	-	750mA	New					R _{efflow}	
			BLM02AX700SN1	70ohm±25%	-	300mA	New					R _{efflow}	
			BLM02AX121SN1	120ohm±25%	-	250mA	New					R _{efflow}	
	0.3	For General Signal Lines	p29 BLM03AG100SN1	10ohm(Typ.)	-	500mA		Kit				R _{efflow}	
			BLM03AG700SN1	70ohm(Typ.)	-	200mA		Kit				R _{efflow}	
			BLM03AG800SN1	80ohm±25%	-	200mA		Kit				R _{efflow}	
			BLM03AG121SN1	120ohm±25%	-	200mA		Kit				R _{efflow}	
			BLM03AG241SN1	240ohm±25%	-	200mA		Kit				R _{efflow}	
			BLM03AG601SN1	600ohm±25%	-	100mA		Kit				R _{efflow}	
			BLM03AG102SN1	1000ohm±25%	-	100mA		Kit				R _{efflow}	
0.3	Universal Type [Power lines/Signal lines]	p27 BLM03AX100SN1	10ohm(Typ.)	-	1000mA		Kit	≥1A			R _{efflow}		
		BLM03AX800SN1	80ohm±25%	-	500mA		Kit				R _{efflow}		
		BLM03AX121SN1	120ohm±25%	-	450mA		Kit				R _{efflow}		
		BLM03AX241SN1	240ohm±25%	-	350mA		Kit				R _{efflow}		
		BLM03AX601SN1	600ohm±25%	-	250mA		Kit				R _{efflow}		
		BLM03AX102SN1	1000ohm±25%	-	200mA		Kit				R _{efflow}		
		0.3	For High Speed Signal Lines (Sharp Impedance Curve)	p31 BLM03BD750SN1	75ohm±25%	-	300mA		Kit				R _{efflow}
				BLM03BD121SN1	120ohm±25%	-	250mA		Kit				R _{efflow}
				BLM03BD241SN1	240ohm±25%	-	200mA		Kit				R _{efflow}
				BLM03BD471SN1	470ohm±25%	-	215mA		Kit				R _{efflow}
BLM03BD601SN1	600ohm±25%			-	200mA		Kit				R _{efflow}		
BLM03BB100SN1	10ohm±25%			-	300mA		Kit				R _{efflow}		
BLM03BB220SN1	22ohm±25%			-	200mA		Kit				R _{efflow}		
BLM03BB470SN1	47ohm±25%			-	200mA		Kit				R _{efflow}		
BLM03BB750SN1	75ohm±25%			-	200mA		Kit				R _{efflow}		
BLM03BB121SN1	120ohm±25%			-	100mA		Kit				R _{efflow}		
0.3	For Power Lines	p24 BLM03PG220SN1	22ohm±25%	-	900mA		Kit				R _{efflow}		
		BLM03PG330SN1	33ohm±25%	-	750mA		Kit				R _{efflow}		
		p25 BLM03PX220SN1	22ohm±25%	-	1800mA	New	Kit	≥1A			R _{efflow}		
		BLM03PX330SN1	33ohm±25%	-	1500mA	New	Kit	≥1A			R _{efflow}		
		BLM03PX800SN1	80ohm±25%	-	1000mA	New	Kit	≥1A			R _{efflow}		
		0.3	For GHz Band Noise	p77 BLM03HG601SN1	600ohm±25%	1000ohm±40%	150mA		Kit		GHz		R _{efflow}
				BLM03HG102SN1	1000ohm±25%	1800ohm±40%	125mA		Kit		GHz		R _{efflow}
				p77 BLM03HD331SN1	330ohm±25%	-	200mA		Kit		GHz		R _{efflow}
				BLM03HD471SN1	470ohm±25%	-	175mA		Kit		GHz		R _{efflow}
				BLM03HD601SN1	600ohm±25%	-	150mA		Kit		GHz		R _{efflow}
BLM03HD102SN1	1000ohm±25%			-	120mA		Kit		GHz		R _{efflow}		
0402	0.5	For General Signal Lines	p37 BLM15AG100SN1	10ohm(Typ.)	-	1000mA		Kit	≥1A			R _{efflow}	
			BLM15AG700SN1	70ohm(Typ.)	-	500mA		Kit				R _{efflow}	
			BLM15AG121SN1	120ohm±25%	-	500mA		Kit				R _{efflow}	
			BLM15AG221SN1	220ohm±25%	-	300mA		Kit				R _{efflow}	
			BLM15AG601SN1	600ohm±25%	-	300mA		Kit				R _{efflow}	
	0.5	Universal Type [Power lines/Signal lines]	p35 BLM15AG102SN1	1000ohm±25%	-	200mA		Kit				R _{efflow}	
			BLM15AX100SN1	10ohm(Typ.)	-	1740mA		Kit	≥1A			R _{efflow}	
			BLM15AX300SN1	30ohm±25%	-	1100mA		Kit	≥1A			R _{efflow}	
			BLM15AX700SN1	70ohm±25%	-	780mA		Kit				R _{efflow}	
			BLM15AX121SN1	120ohm±25%	-	680mA		Kit				R _{efflow}	
			BLM15AX221SN1	220ohm±25%	-	580mA		Kit				R _{efflow}	
			BLM15AX601SN1	600ohm±25%	-	420mA		Kit				R _{efflow}	
			BLM15AX102SN1	1000ohm±25%	-	350mA		Kit				R _{efflow}	

Continued on the following page.

△Note • Please read rating and △CAUTION (for storage, operating, rating, soldering, mounting and handling) in this catalog to prevent smoking and/or burning, etc.
• This catalog has only typical specifications. Therefore, please approve our product specifications or transact the approval sheet for product specifications before ordering.

Size Code (Inch)	Thickness (mm)	Type	Part Number	Impedance		Rated Current	New	Kit	≥1A	GHz	F _{low}	R _{eflow}
				at 100MHz/20°C	at 1GHz/20°C							
0402	0.5	For High Speed Signal Lines (Sharp Impedance Curve)	p39 BLM15BD750SN1	75ohm±25%	-	300mA		Kit				R _{eflow}
	0.5		BLM15BD121SN1	120ohm±25%	-	300mA		Kit				R _{eflow}
	0.5		BLM15BD221SN1	220ohm±25%	-	300mA		Kit				R _{eflow}
	0.5		BLM15BD471SN1	470ohm±25%	-	200mA		Kit				R _{eflow}
	0.5		BLM15BD601SN1	600ohm±25%	-	200mA		Kit				R _{eflow}
	0.5		BLM15BD102SN1	1000ohm±25%	-	200mA		Kit				R _{eflow}
	0.5		BLM15BD182SN1	1800ohm±25%	-	100mA		Kit				R _{eflow}
	0.5		BLM15BB050SN1	5ohm±25%	-	500mA		Kit				R _{eflow}
	0.5		BLM15BB100SN1	10ohm±25%	-	300mA		Kit				R _{eflow}
	0.5		BLM15BB220SN1	22ohm±25%	-	300mA		Kit				R _{eflow}
	0.5		BLM15BB470SN1	47ohm±25%	-	300mA		Kit				R _{eflow}
	0.5		BLM15BB750SN1	75ohm±25%	-	300mA		Kit				R _{eflow}
	0.5		BLM15BB121SN1	120ohm±25%	-	300mA		Kit				R _{eflow}
	0.5		BLM15BB221SN1	220ohm±25%	-	200mA		Kit				R _{eflow}
	0.5		BLM15BC121SN1	120ohm±25%	-	350mA		Kit				R _{eflow}
	0.5		BLM15BC241SN1	240ohm±25%	-	250mA		Kit				R _{eflow}
	0.5	BLM15BA050SN1	5ohm±25%	-	300mA		Kit				R _{eflow}	
	0.5	BLM15BA100SN1	10ohm±25%	-	300mA		Kit				R _{eflow}	
	0.5	BLM15BA220SN1	22ohm±25%	-	300mA		Kit				R _{eflow}	
	0.5	BLM15BA330SN1	33ohm±25%	-	300mA		Kit				R _{eflow}	
	0.5	BLM15BA470SN1	47ohm±25%	-	200mA		Kit				R _{eflow}	
	0.5	BLM15BA750SN1	75ohm±25%	-	200mA		Kit				R _{eflow}	
	0.5	For Power Lines	p33 BLM15PG100SN1	10ohm(Typ.)	-	1000mA		Kit	≥1A			R _{eflow}
	0.5		BLM15PD300SN1	30ohm±25%	-	2200mA		Kit	≥1A			R _{eflow}
	0.5		BLM15PD600SN1	60ohm±25%	-	1700mA		Kit	≥1A			R _{eflow}
	0.5		BLM15PD800SN1	80ohm±25%	-	1500mA		Kit	≥1A			R _{eflow}
	0.5		BLM15PD121SN1	120ohm±25%	-	1300mA		Kit	≥1A			R _{eflow}
	0.5	For GHz Band Noise	p79 BLM15HG601SN1	600ohm±25%	1000ohm±40%	300mA		Kit		GHz		R _{eflow}
0.5	For General Signal Lines		BLM15HG102SN1	1000ohm±25%	1400ohm±40%	250mA		Kit		GHz		R _{eflow}
0.5	For High Speed Signal Lines (Sharp Impedance Curve)		p79 BLM15HD601SN1	600ohm±25%	1400ohm±40%	300mA		Kit		GHz		R _{eflow}
0.5			BLM15HD102SN1	1000ohm±25%	2000ohm±40%	250mA		Kit		GHz		R _{eflow}
0.5			BLM15HD182SN1	1800ohm±25%	2700ohm±40%	200mA		Kit		GHz		R _{eflow}
0.5			BLM15HB121SN1	120ohm±25%	500ohm±40%	300mA		Kit		GHz		R _{eflow}
0.5	BLM15HB221SN1		220ohm±25%	900ohm±40%	250mA		Kit		GHz		R _{eflow}	
0.5	Universal Type [Power Lines/Signal Lines]	p81 BLM15EG121SN1	120ohm±25%	145ohm(Typ.)	1500mA		Kit	≥1A	GHz		R _{eflow}	
0.5		BLM15EG221SN1	220ohm±25%	270ohm(Typ.)	700mA		Kit		GHz		R _{eflow}	
0.5	For High-GHz Band Noise	p82 BLM15GG221SN1	220ohm±25%	600ohm±40%	300mA		Kit		HI-GHz		R _{eflow}	
0.5		For General Signal Lines	BLM15GG471SN1	470ohm±25%	1200ohm±40%	200mA		Kit		HI-GHz		R _{eflow}
0.5		For High Speed Signal Lines	p82 BLM15GA750SN1	75ohm±25%	1000ohm±40%	200mA		Kit		HI-GHz		R _{eflow}
0603	0.8	For General Signal Lines	p49 BLM18AG121SN1	120ohm±25%	-	500mA		Kit			F _{low}	R _{eflow}
	0.8		BLM18AG151SN1	150ohm±25%	-	500mA		Kit			F _{low}	R _{eflow}
	0.8		BLM18AG221SN1	220ohm±25%	-	500mA		Kit			F _{low}	R _{eflow}
	0.8		BLM18AG331SN1	330ohm±25%	-	500mA		Kit			F _{low}	R _{eflow}
	0.8		BLM18AG471SN1	470ohm±25%	-	500mA		Kit			F _{low}	R _{eflow}
	0.8		BLM18AG601SN1	600ohm±25%	-	500mA		Kit			F _{low}	R _{eflow}
	0.8		BLM18AG102SN1	1000ohm±25%	-	400mA		Kit			F _{low}	R _{eflow}
	0.6			p55 BLM18TG121TN1	120ohm±25%	-	200mA					F _{low}
	0.6	BLM18TG221TN1		220ohm±25%	-	200mA					F _{low}	R _{eflow}
	0.6			BLM18TG601TN1	600ohm±25%	-	200mA				F _{low}	R _{eflow}
0.6			BLM18TG102TN1	1000ohm±25%	-	100mA				F _{low}	R _{eflow}	

Continued on the following page.

△Note • Please read rating and △CAUTION (for storage, operating, rating, soldering, mounting and handling) in this catalog to prevent smoking and/or burning, etc.
 • This catalog has only typical specifications. Therefore, please approve our product specifications or transact the approval sheet for product specifications before ordering.

Chip Ferrite Bead
Chip EMIFIL®
Chip Common Mode Choke Coil
Block Type EMIFIL®
Microwave Absorber

Size Code (Inch)	Thickness (mm)	Type	Part Number	Impedance		Rated Current	New	Kit	≥1A ≥3A	GHz Hz	F _{low}	R _{eflow}		
				at 100MHz/20°C	at 1GHz/20°C									
0603	0.8	For High Speed Signal Lines (Sharp Impedance Curve)	p51	BLM18BD470SN1	47ohm±25%	-	500mA	Kit			F _{low}	R _{eflow}		
	0.8		BLM18BD121SN1	120ohm±25%	-	200mA	Kit			F _{low}	R _{eflow}			
	0.8		BLM18BD151SN1	150ohm±25%	-	200mA	Kit			F _{low}	R _{eflow}			
	0.8		BLM18BD221SN1	220ohm±25%	-	200mA	Kit			F _{low}	R _{eflow}			
	0.8		BLM18BD331SN1	330ohm±25%	-	200mA	Kit			F _{low}	R _{eflow}			
	0.8		BLM18BD421SN1	420ohm±25%	-	200mA	Kit			F _{low}	R _{eflow}			
	0.8		BLM18BD471SN1	470ohm±25%	-	200mA	Kit			F _{low}	R _{eflow}			
	0.8		BLM18BD601SN1	600ohm±25%	-	200mA	Kit			F _{low}	R _{eflow}			
	0.8		BLM18BD102SN1	1000ohm±25%	-	100mA	Kit			F _{low}	R _{eflow}			
	0.8		BLM18BD152SN1	1500ohm±25%	-	50mA	Kit			F _{low}	R _{eflow}			
	0.8		BLM18BD182SN1	1800ohm±25%	-	50mA	Kit			F _{low}	R _{eflow}			
	0.8		BLM18BD222SN1	2200ohm±25%	-	50mA	Kit			F _{low}	R _{eflow}			
	0.8		BLM18BD252SN1	2500ohm±25%	-	50mA	Kit			F _{low}	R _{eflow}			
	0.8		BLM18BB050SN1	5ohm±25%	-	700mA	Kit			F _{low}	R _{eflow}			
	0.8		BLM18BB100SN1	10ohm±25%	-	700mA	Kit			F _{low}	R _{eflow}			
	0.8		BLM18BB220SN1	22ohm±25%	-	600mA	Kit			F _{low}	R _{eflow}			
	0.8		BLM18BB470SN1	47ohm±25%	-	550mA	Kit			F _{low}	R _{eflow}			
	0.8		BLM18BB600SN1	60ohm±25%	-	550mA	Kit			F _{low}	R _{eflow}			
	0.8		BLM18BB750SN1	75ohm±25%	-	500mA	Kit			F _{low}	R _{eflow}			
	0.8		BLM18BB121SN1	120ohm±25%	-	500mA	Kit			F _{low}	R _{eflow}			
	0.8		BLM18BB141SN1	140ohm±25%	-	450mA				F _{low}	R _{eflow}			
	0.8		BLM18BB151SN1	150ohm±25%	-	450mA	Kit			F _{low}	R _{eflow}			
	0.8		BLM18BB221SN1	220ohm±25%	-	450mA	Kit			F _{low}	R _{eflow}			
	0.8		BLM18BB331SN1	330ohm±25%	-	400mA	Kit			F _{low}	R _{eflow}			
	0.8		BLM18BB471SN1	470ohm±25%	-	300mA	Kit			F _{low}	R _{eflow}			
	0.8		BLM18BA050SN1	5ohm±25%	-	500mA	Kit			F _{low}	R _{eflow}			
	0.8		BLM18BA100SN1	10ohm±25%	-	500mA	Kit			F _{low}	R _{eflow}			
	0.8		BLM18BA220SN1	22ohm±25%	-	500mA				F _{low}	R _{eflow}			
	0.8		BLM18BA470SN1	47ohm±25%	-	300mA	Kit			F _{low}	R _{eflow}			
	0.8		BLM18BA750SN1	75ohm±25%	-	300mA	Kit			F _{low}	R _{eflow}			
	0.8		BLM18BA121SN1	120ohm±25%	-	200mA	Kit			F _{low}	R _{eflow}			
	0.8		For Digital Interface Lines	p56	BLM18RK121SN1	120ohm±25%	-	200mA	Kit			F _{low}	R _{eflow}	
	0.8			BLM18RK221SN1	220ohm±25%	-	200mA			F _{low}	R _{eflow}			
	0.8			BLM18RK471SN1	470ohm±25%	-	200mA	Kit		F _{low}	R _{eflow}			
	0.8			BLM18RK601SN1	600ohm±25%	-	200mA	Kit		F _{low}	R _{eflow}			
	0.8			BLM18RK102SN1	1000ohm±25%	-	200mA	Kit		F _{low}	R _{eflow}			
	0.8			Standard Type	p43	BLM18PG300SN1	30ohm(Typ.)	-	1000mA	Kit	≥1A		F _{low}	R _{eflow}
	0.8				BLM18PG330SN1	33ohm±25%	-	3000mA	Kit	≥3A		F _{low}	R _{eflow}	
	0.8				BLM18PG600SN1	60ohm(Typ.)	-	500mA	Kit		F _{low}	R _{eflow}		
	0.8				BLM18PG121SN1	120ohm±25%	-	2000mA	Kit	≥1A		F _{low}	R _{eflow}	
	0.8				BLM18PG181SN1	180ohm±25%	-	1500mA	Kit	≥1A		F _{low}	R _{eflow}	
	0.8		BLM18PG221SN1		220ohm±25%	-	1400mA	Kit	≥1A		F _{low}	R _{eflow}		
	0.8		BLM18PG331SN1		330ohm±25%	-	1200mA	Kit	≥1A		F _{low}	R _{eflow}		
0.8	BLM18PG471SN1	470ohm±25%	-		1000mA	Kit	≥1A		F _{low}	R _{eflow}				
0.6	For Power Lines	p45	BLM18KG260TN1		26ohm±25%	-	6000mA	Kit	≥3A		F _{low}	R _{eflow}		
0.6		BLM18KG300TN1	30ohm±25%		-	5000mA	Kit	≥3A		F _{low}	R _{eflow}			
0.6		BLM18KG700TN1	70ohm±25%	-	3500mA	Kit	≥3A		F _{low}	R _{eflow}				
0.6		BLM18KG101TN1	100ohm±25%	-	3000mA	Kit	≥3A		F _{low}	R _{eflow}				
0.6		BLM18KG121TN1	120ohm±25%	-	3000mA	Kit	≥3A		F _{low}	R _{eflow}				
0.8		BLM18KG221SN1	220ohm±25%	-	2200mA	Kit	≥1A		F _{low}	R _{eflow}				
0.8		Low DC Resistance Type	p47	BLM18KG331SN1	330ohm±25%	-	1700mA	Kit	≥1A		F _{low}	R _{eflow}		
0.8			BLM18KG471SN1	470ohm±25%	-	1500mA	Kit	≥1A		F _{low}	R _{eflow}			
0.8			BLM18KG601SN1	600ohm±25%	-	1300mA	Kit	≥1A		F _{low}	R _{eflow}			
0.5			BLM18SG260TN1	26ohm±25%	-	6000mA	Kit	≥3A		F _{low}	R _{eflow}			
0.5	BLM18SG700TN1		70ohm±25%	-	4000mA	Kit	≥3A		F _{low}	R _{eflow}				
0.5	BLM18SG121TN1		120ohm±25%	-	3000mA	Kit	≥3A		F _{low}	R _{eflow}				
0.5	BLM18SG221TN1	220ohm±25%	-	2500mA	Kit	≥1A		F _{low}	R _{eflow}					
0.5	BLM18SG331TN1	330ohm±25%	-	1500mA	Kit	≥1A		F _{low}	R _{eflow}					

Continued on the following page.

△Note • Please read rating and △CAUTION (for storage, operating, rating, soldering, mounting and handling) in this catalog to prevent smoking and/or burning, etc.
• This catalog has only typical specifications. Therefore, please approve our product specifications or transact the approval sheet for product specifications before ordering.

Size Code (Inch)	Thickness (mm)	Type	Part Number	Impedance		Rated Current	New	Kit	≥1A	GHz	F _{low}	R _{eflow}	
				at 100MHz/20°C	at 1GHz/20°C								
6063	0.8	For General Signal Lines	BLM18HG471SN1	470ohm±25%	600ohm(Typ.)	200mA		Kit		GHz	F _{low}	R _{eflow}	
	0.8		BLM18HG601SN1	600ohm±25%	700ohm(Typ.)	200mA		Kit		GHz	F _{low}	R _{eflow}	
	0.8		BLM18HG102SN1	1000ohm±25%	1000ohm(Typ.)	100mA		Kit		GHz	F _{low}	R _{eflow}	
	0.8	For High Speed Signal Lines (Sharp Impedance Curve)	BLM18HE601SN1	600ohm±25%	600ohm(Typ.)	800mA		Kit		GHz	F _{low}	R _{eflow}	
	0.8		BLM18HE102SN1	1000ohm±25%	1000ohm(Typ.)	600mA		Kit		GHz	F _{low}	R _{eflow}	
	0.8		BLM18HE152SN1	1500ohm±25%	1500ohm(Typ.)	500mA		Kit		GHz	F _{low}	R _{eflow}	
	0.8		BLM18HD471SN1	470ohm±25%	1000ohm(Typ.)	100mA		Kit		GHz	F _{low}	R _{eflow}	
	0.8		BLM18HD601SN1	600ohm±25%	1200ohm(Typ.)	100mA		Kit		GHz	F _{low}	R _{eflow}	
	0.8		BLM18HD102SN1	1000ohm±25%	1700ohm(Typ.)	50mA		Kit		GHz	F _{low}	R _{eflow}	
	0.8		BLM18HB121SN1	120ohm±25%	500ohm±40%	200mA		Kit		GHz	F _{low}	R _{eflow}	
	0.8		BLM18HB221SN1	220ohm±25%	1100ohm±40%	100mA		Kit		GHz	F _{low}	R _{eflow}	
	0.8		BLM18HB331SN1	330ohm±25%	1600ohm±40%	50mA		Kit		GHz	F _{low}	R _{eflow}	
	0.8		For Digital Interface Lines	BLM18HK331SN1	330ohm±25%	400ohm±40%	200mA		Kit		GHz	F _{low}	R _{eflow}
	0.8			BLM18HK471SN1	470ohm±25%	600ohm±40%	200mA		Kit		GHz	F _{low}	R _{eflow}
	0.8	BLM18HK102SN1		1000ohm±25%	1200ohm±40%	50mA		Kit		GHz	F _{low}	R _{eflow}	
	0.8	Universal Type [Power lines/Signal lines]	BLM18EG101TN1	100ohm±25%	140ohm(Typ.)	2000mA		Kit	≥1A	GHz	F _{low}	R _{eflow}	
	0.8		BLM18EG121SN1	120ohm±25%	145ohm(Typ.)	2000mA		Kit	≥1A	GHz	F _{low}	R _{eflow}	
	0.8		BLM18EG221SN1	220ohm±25%	260ohm(Typ.)	2000mA		Kit	≥1A	GHz	F _{low}	R _{eflow}	
	0.5		BLM18EG221TN1	220ohm±25%	300ohm(Typ.)	1000mA		Kit	≥1A	GHz	F _{low}	R _{eflow}	
	0.5		BLM18EG331TN1	330ohm±25%	450ohm(Typ.)	500mA		Kit		GHz	F _{low}	R _{eflow}	
	0.5		BLM18EG391TN1	390ohm±25%	520ohm(Typ.)	500mA		Kit		GHz	F _{low}	R _{eflow}	
	0.8		BLM18EG471SN1	470ohm±25%	550ohm(Typ.)	500mA		Kit		GHz	F _{low}	R _{eflow}	
	0.8		BLM18EG601SN1	600ohm±25%	700ohm(Typ.)	500mA		Kit		GHz	F _{low}	R _{eflow}	
	0.8	For High-GHz Band Noise	BLM18GG471SN1	470ohm±25%	1800ohm±30%	200mA		Kit		Hi-GHz		R _{eflow}	
8085	0.85	For General Signal Lines	BLM21AG121SN1	120ohm±25%	-	800mA		Kit			F _{low}	R _{eflow}	
	0.85		BLM21AG151SN1	150ohm±25%	-	800mA		Kit			F _{low}	R _{eflow}	
	0.85		BLM21AG221SN1	220ohm±25%	-	800mA		Kit			F _{low}	R _{eflow}	
	0.85		BLM21AG331SN1	330ohm±25%	-	700mA		Kit			F _{low}	R _{eflow}	
	0.85		BLM21AG471SN1	470ohm±25%	-	700mA		Kit			F _{low}	R _{eflow}	
	0.85		BLM21AG601SN1	600ohm±25%	-	600mA		Kit			F _{low}	R _{eflow}	
	0.85		BLM21AG102SN1	1000ohm±25%	-	500mA		Kit			F _{low}	R _{eflow}	
	0.85		For High Speed Signal Lines (Sharp Impedance Curve)	BLM21BD121SN1	120ohm±25%	-	200mA		Kit			F _{low}	R _{eflow}
	0.85	BLM21BD151SN1		150ohm±25%	-	200mA					F _{low}	R _{eflow}	
	0.85	BLM21BD221SN1		220ohm±25%	-	200mA		Kit			F _{low}	R _{eflow}	
	0.85	BLM21BD331SN1		330ohm±25%	-	200mA					F _{low}	R _{eflow}	
	0.85	BLM21BD421SN1		420ohm±25%	-	200mA		Kit			F _{low}	R _{eflow}	
	0.85	BLM21BD471SN1		470ohm±25%	-	200mA		Kit			F _{low}	R _{eflow}	
	0.85	BLM21BD601SN1		600ohm±25%	-	200mA		Kit			F _{low}	R _{eflow}	
	0.85	BLM21BD751SN1		750ohm±25%	-	200mA					F _{low}	R _{eflow}	
	0.85	BLM21BD102SN1		1000ohm±25%	-	200mA		Kit			F _{low}	R _{eflow}	
	0.85	BLM21BD152SN1		1500ohm±25%	-	200mA		Kit			F _{low}	R _{eflow}	
	0.85	BLM21BD182SN1		1800ohm±25%	-	200mA		Kit			F _{low}	R _{eflow}	
	0.85	BLM21BD222TN1		2200ohm±25%	-	200mA		Kit			F _{low}	R _{eflow}	
	0.85	BLM21BD222SN1		2250ohm(Typ.)	-	200mA		Kit			F _{low}	R _{eflow}	
	1.25	BLM21BD272SN1		2700ohm±25%	-	200mA		Kit			F _{low}	R _{eflow}	
	0.85	BLM21BB050SN1		5ohm±25%	-	1000mA		Kit			F _{low}	R _{eflow}	
	0.85	BLM21BB600SN1		60ohm±25%	-	800mA		Kit			F _{low}	R _{eflow}	
	0.85	BLM21BB750SN1	75ohm±25%	-	700mA		Kit			F _{low}	R _{eflow}		
	0.85	BLM21BB121SN1	120ohm±25%	-	600mA		Kit			F _{low}	R _{eflow}		
	0.85	BLM21BB151SN1	150ohm±25%	-	600mA					F _{low}	R _{eflow}		
	0.85	BLM21BB201SN1	200ohm±25%	-	500mA					F _{low}	R _{eflow}		
	0.85	BLM21BB221SN1	220ohm±25%	-	500mA		Kit			F _{low}	R _{eflow}		
	0.85	BLM21BB331SN1	330ohm±25%	-	400mA		Kit			F _{low}	R _{eflow}		
	0.85	BLM21BB471SN1	470ohm±25%	-	400mA		Kit			F _{low}	R _{eflow}		
	0.85	For Digital Interface Lines	BLM21RK121SN1	120ohm±25%	-	200mA					F _{low}	R _{eflow}	
	0.85		BLM21RK221SN1	220ohm±25%	-	200mA					F _{low}	R _{eflow}	
0.85	BLM21RK471SN1		470ohm±25%	-	200mA					F _{low}	R _{eflow}		
0.85	BLM21RK601SN1		600ohm±25%	-	200mA					F _{low}	R _{eflow}		
0.85	BLM21RK102SN1		1000ohm±25%	-	200mA					F _{low}	R _{eflow}		

Continued on the following page.

△Note • Please read rating and △CAUTION (for storage, operating, rating, soldering, mounting and handling) in this catalog to prevent smoking and/or burning, etc.
 • This catalog has only typical specifications. Therefore, please approve our product specifications or transact the approval sheet for product specifications before ordering.

Size Code (Inch)	Thickness (mm)	Type	Part Number	Impedance		Rated Current	New	Kit	≥1A ≥3A	GHz Hz	F _{low}	R _{eflow}
				at 100MHz/20°C	at 1GHz/20°C							
0805	0.85	For Power Lines	p59 BLM21PG220SN1	22ohm±25%	-	6000mA		Kit	≥3A		F _{low}	R _{eflow}
	0.85		BLM21PG300SN1	30ohm(Typ.)	-	4000mA		Kit	≥3A		F _{low}	R _{eflow}
	0.85		BLM21PG600SN1	60ohm±25%	-	3500mA		Kit	≥3A		F _{low}	R _{eflow}
	0.85		BLM21PG121SN1	120ohm±25%	-	3000mA		Kit	≥3A		F _{low}	R _{eflow}
	0.85		BLM21PG221SN1	220ohm±25%	-	2000mA		Kit	≥1A		F _{low}	R _{eflow}
	0.85		BLM21PG331SN1	330ohm±25%	-	1500mA		Kit	≥1A		F _{low}	R _{eflow}
1206	1.1	For Power Lines	p68 BLM31PG330SN1	33ohm±25%	-	6000mA		Kit	≥3A		F _{low}	R _{eflow}
	1.1		BLM31PG500SN1	50ohm(Typ.)	-	3500mA		Kit	≥3A		F _{low}	R _{eflow}
	1.1		BLM31PG121SN1	120ohm±25%	-	3500mA		Kit	≥3A		F _{low}	R _{eflow}
	1.1		BLM31PG391SN1	390ohm±25%	-	2000mA		Kit	≥1A		F _{low}	R _{eflow}
	1.1		BLM31PG601SN1	600ohm±25%	-	1500mA		Kit	≥1A		F _{low}	R _{eflow}
1806	1.6	For Power Lines	p70 BLM41PG600SN1	60ohm(Typ.)	-	6000mA		Kit	≥3A		F _{low}	R _{eflow}
	1.6		BLM41PG750SN1	75ohm(Typ.)	-	3500mA		Kit	≥3A		F _{low}	R _{eflow}
	1.6		BLM41PG181SN1	180ohm±25%	-	3500mA		Kit	≥3A		F _{low}	R _{eflow}
	1.6		BLM41PG471SN1	470ohm±25%	-	2000mA		Kit	≥1A		F _{low}	R _{eflow}
	1.6		BLM41PG102SN1	1000ohm±25%	-	1500mA		Kit	≥1A		F _{low}	R _{eflow}
0804	0.5	For General Signal Lines	p72 BLA2AAG121SN4	120ohm±25%	-	100mA						R _{eflow}
	0.5		BLA2AAG221SN4	220ohm±25%	-	50mA						R _{eflow}
	0.5		BLA2AAG601SN4	600ohm±25%	-	50mA						R _{eflow}
	0.5		BLA2AAG102SN4	1000ohm±25%	-	50mA						R _{eflow}
	0.5		p72 BLA2ABB100SN4	10ohm±25%	-	200mA						R _{eflow}
	0.5	For High Speed Signal Lines	BLA2ABB220SN4	22ohm±25%	-	200mA						R _{eflow}
	0.5		BLA2ABB470SN4	47ohm±25%	-	200mA						R _{eflow}
	0.5		BLA2ABB121SN4	120ohm±25%	-	50mA						R _{eflow}
	0.5		BLA2ABB221SN4	220ohm±25%	-	50mA						R _{eflow}
	0.5		BLA2ABD750SN4	75ohm±25%	-	200mA						R _{eflow}
	0.5		BLA2ABD121SN4	120ohm±25%	-	200mA						R _{eflow}
	0.5		BLA2ABD221SN4	220ohm±25%	-	100mA						R _{eflow}
	0.5		BLA2ABD471SN4	470ohm±25%	-	100mA						R _{eflow}
	0.5		BLA2ABD601SN4	600ohm±25%	-	100mA						R _{eflow}
	0.5		BLA2ABD102SN4	1000ohm±25%	-	50mA						R _{eflow}
1206	0.8	For General Signal Lines	p75 BLA31AG300SN4	30ohm±25%	-	200mA					F _{low}	R _{eflow}
	0.8		BLA31AG600SN4	60ohm±25%	-	200mA					F _{low}	R _{eflow}
	0.8		BLA31AG121SN4	120ohm±25%	-	150mA					F _{low}	R _{eflow}
	0.8		BLA31AG221SN4	220ohm±25%	-	150mA					F _{low}	R _{eflow}
	0.8		BLA31AG601SN4	600ohm±25%	-	100mA					F _{low}	R _{eflow}
	0.8	BLA31AG102SN4	1000ohm±25%	-	50mA					F _{low}	R _{eflow}	
	0.8	For High Speed Signal Lines	p75 BLA31BD121SN4	120ohm±25%	-	150mA					F _{low}	R _{eflow}
	0.8		BLA31BD221SN4	220ohm±25%	-	150mA					F _{low}	R _{eflow}
	0.8		BLA31BD471SN4	470ohm±25%	-	100mA					F _{low}	R _{eflow}
	0.8		BLA31BD601SN4	600ohm±25%	-	100mA					F _{low}	R _{eflow}
0.8	BLA31BD102SN4		1000ohm±25%	-	50mA					F _{low}	R _{eflow}	

Chip Ferrite Bead

Chip EMIFIL®

Chip Common Mode Choke Coil

Block Type EMIFIL®

Microwave Absorber

△Note • Please read rating and △CAUTION (for storage, operating, rating, soldering, mounting and handling) in this catalog to prevent smoking and/or burning, etc.
 • This catalog has only typical specifications. Therefore, please approve our product specifications or transact the approval sheet for product specifications before ordering.